

Latest numbers on COVID-19 in the UK – 10 September 2020

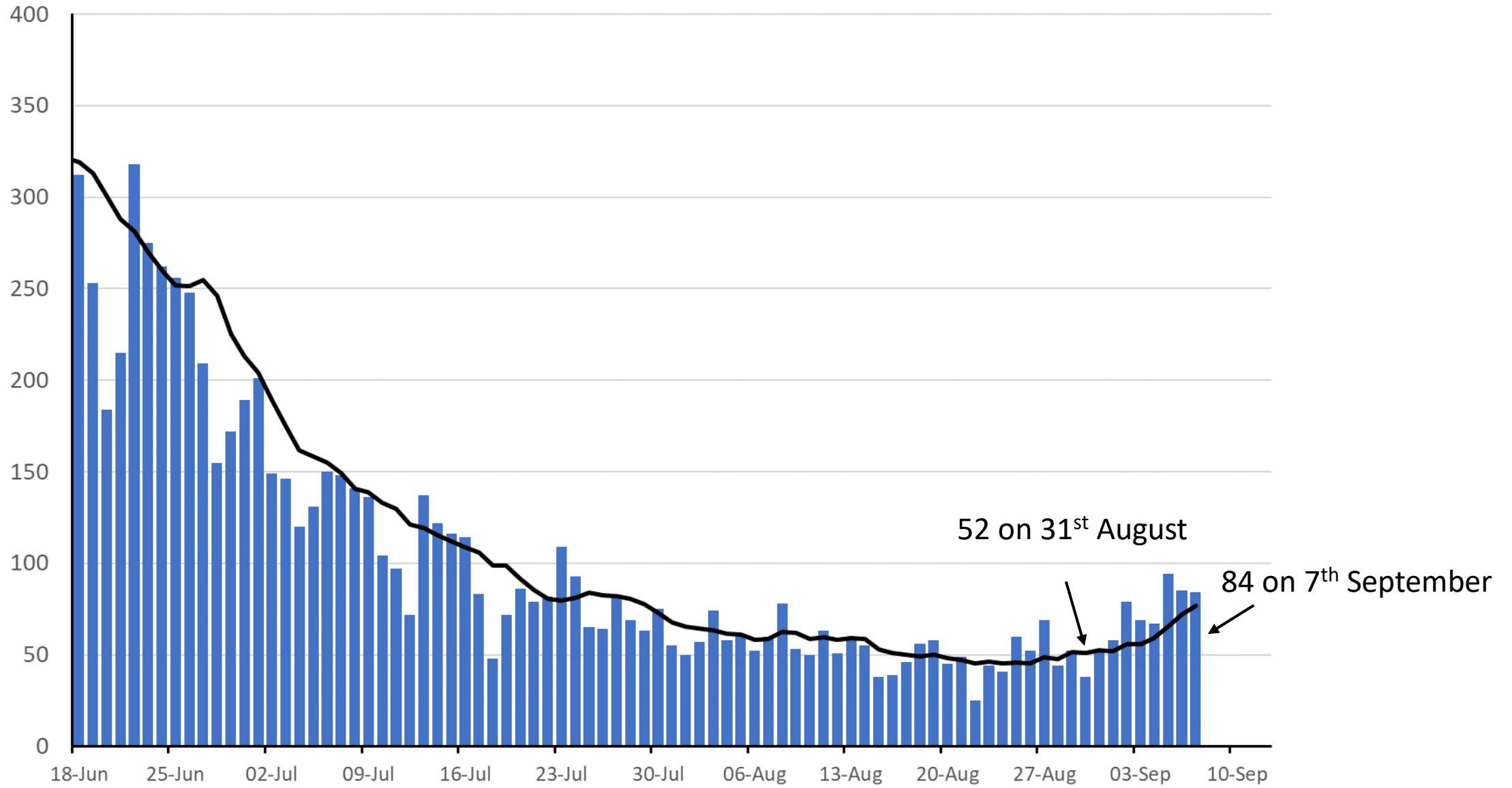
We have combined data from the government's daily figures¹, the government's report on NHS Test and Trace², Scotland³ and Wales⁴.

1. Number of new hospital admissions in England.
2. Number, positivity rate & location of new cases in the UK.
3. Summary.

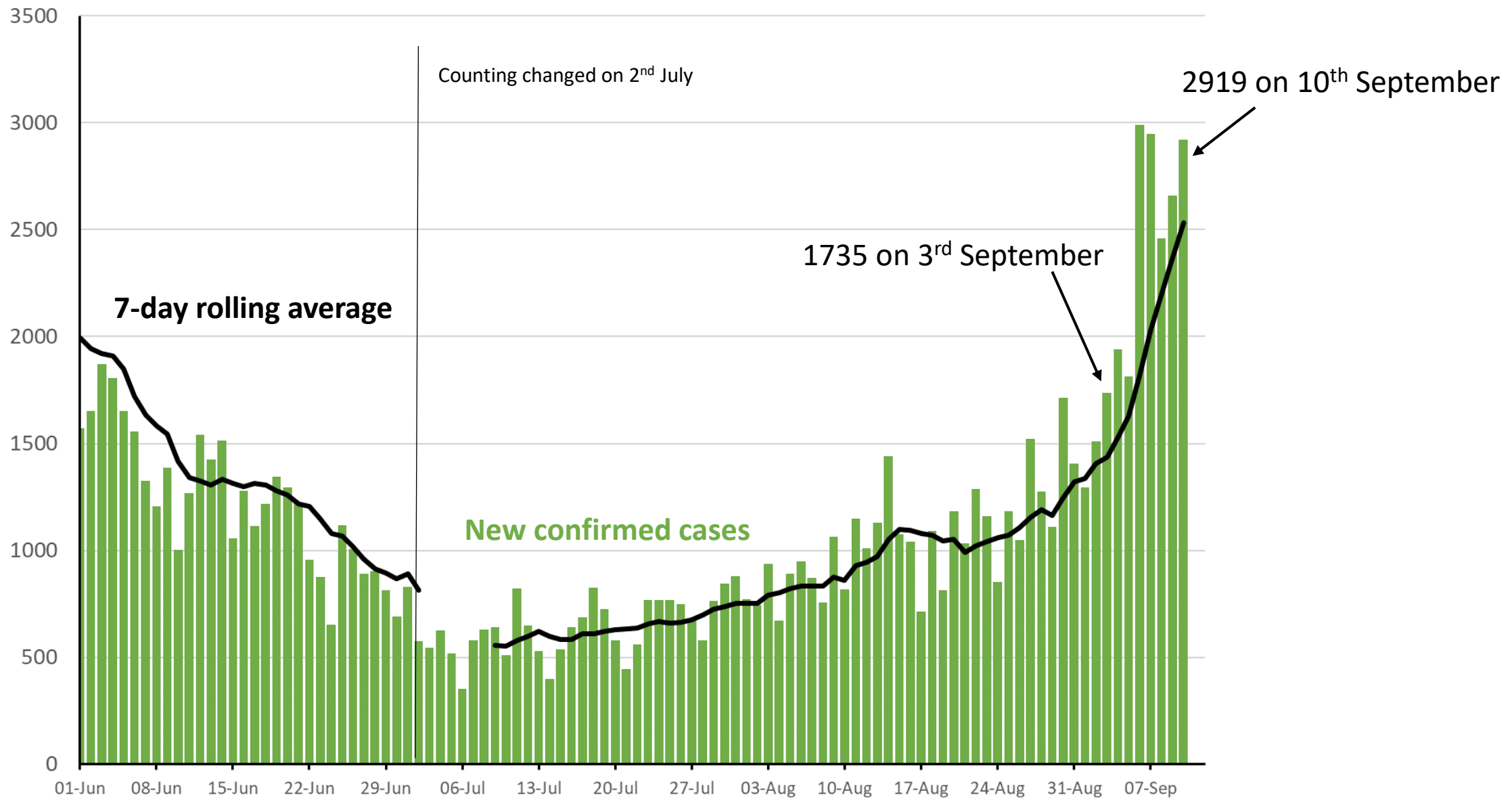
With many thanks to Catherine Finney for help in collating the data

1. <https://coronavirus.data.gov.uk/>
2. <https://www.gov.uk/government/collections/nhs-test-and-trace-statistics-england-weekly-reports>
3. <https://www.gov.scot/publications/coronavirus-covid-19-trends-in-daily-data/>
4. <https://gov.wales/sites/default/files/statistics-and-research/2020-09/testing-data-for-coronavirus-covid-19-9-september-2020-609.ods>

Number of new hospital admissions with COVID-19 per day in England

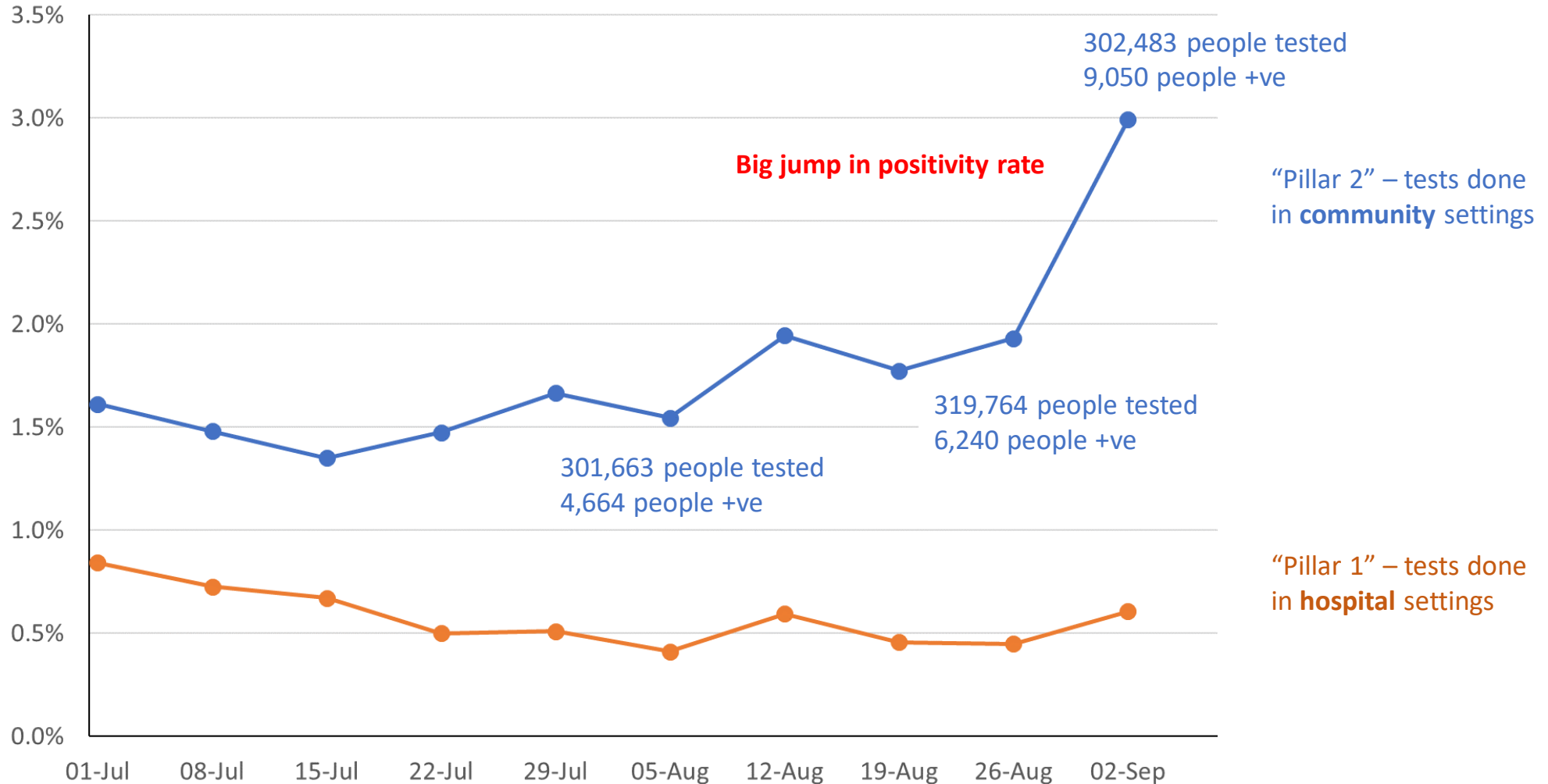


Number of new UK confirmed COVID-19 cases (people who have had a positive test)



Positivity rates have gone up since mid July, but big increase last week of August

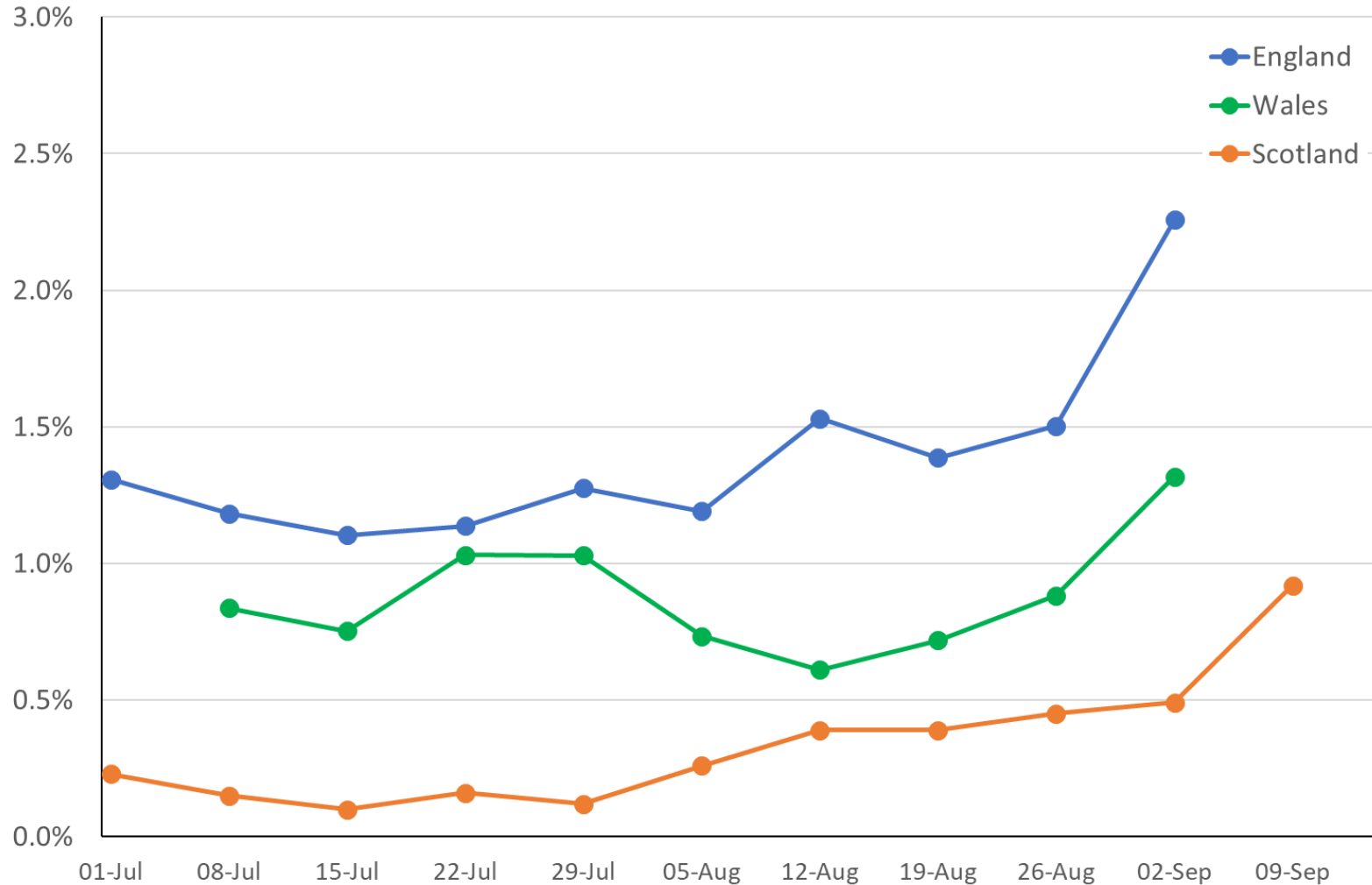
Percentage of people tested who then test positive (“positivity rate”)



(note, before schools went back in England)
Data covering 28 May – 2 September

Positivity rates for England, Wales & Scotland

Percentage of people tested who then test positive (“positivity rate”) Pillar 1 + Pillar 2



Data from <https://www.gov.uk/government/collections/nhs-test-and-trace-statistics-england-weekly-reports>
<https://gov.wales/testing-data-coronavirus-covid-19-6-september-2020>
<https://www.gov.scot/publications/coronavirus-covid-19-trends-in-daily-data/>

King's College London COVID Symptom Tracker App

“We are now seeing a significant increase in cases in the UK with over 3,000 daily new symptomatic cases, and an estimated R value of 1.2.

We are now confident that this rise is statistically significant and that we are definitely experiencing a rise in COVID cases in the UK right now.”

ONS infection survey 11 September

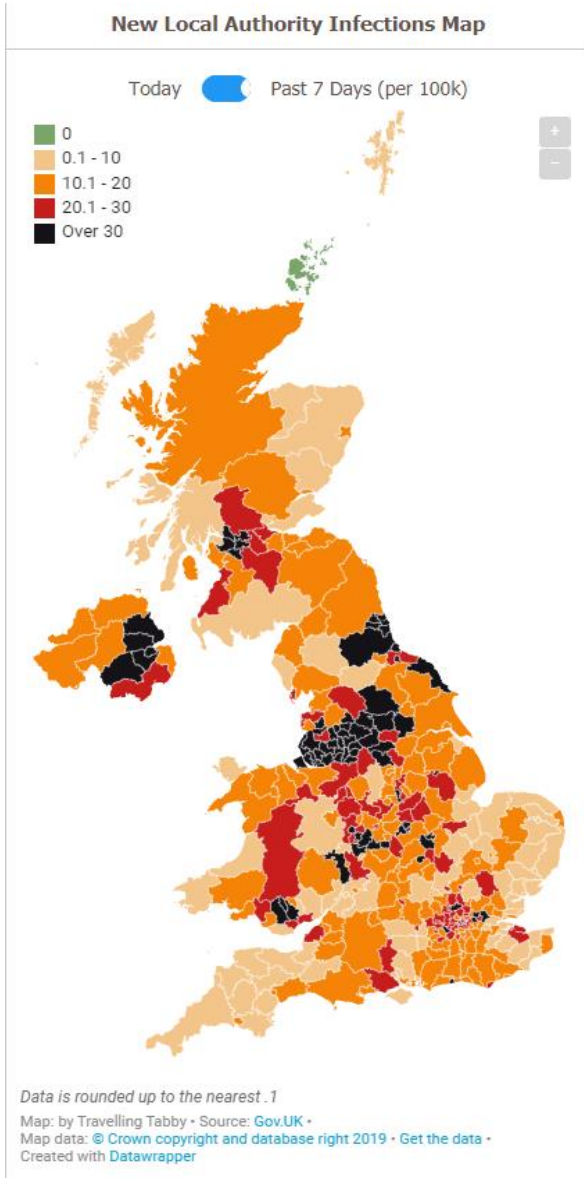
- The most recent modelled estimate suggests the number of infections has increased in recent weeks.
- In recent weeks, there has been an increase in the number of people testing positive for COVID-19 aged 17 to 24 years and 25 to 34 years whereas the number of people testing positive for COVID-19 aged 50 years and over appears to be stable or declining.

from <https://www.ons.gov.uk/peoplepopulationandcommunity/healthandsocialcare/conditionsanddiseases/bulletins/coronaviruscovid19infectionsurveys/pilot/11september2020>

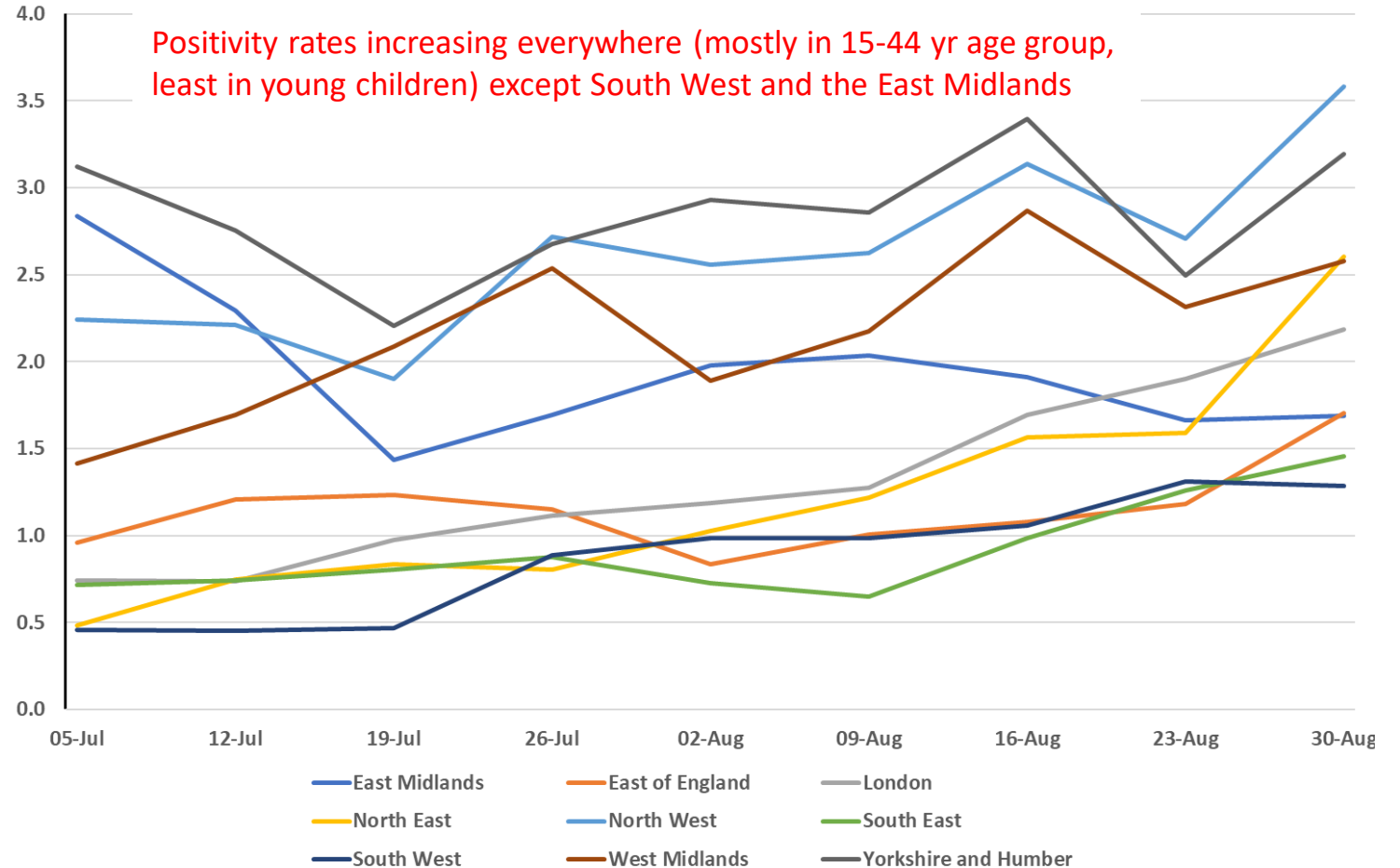


Graph and quote from <https://covid.joinzoe.com/post/covid-on-the-rise>

Where are the cases?



Percentage of people tested who then test positive (“positivity rate”) – England pillar 2 (community tests) only



Summary

Deaths are very low, but hospital admissions are increasing over last week (a bit).

There has been a steep increase recently in transmission. Increases started before schools went back & universities are returning soon.

This is very concerning, especially as we know that many people with symptoms cannot get tested right now. The risk is people not isolating and their contacts not being reached.

More transparency in reporting cases by who is being tested and why would help to better understand the increases.

We urgently need to improve testing capacity, contact tracing and support for isolation.

The good news is that we are still far below where we were in mid March and we do have time to bend the curve back down.