

## Latest numbers on COVID-19 in the UK – 21 August 2020

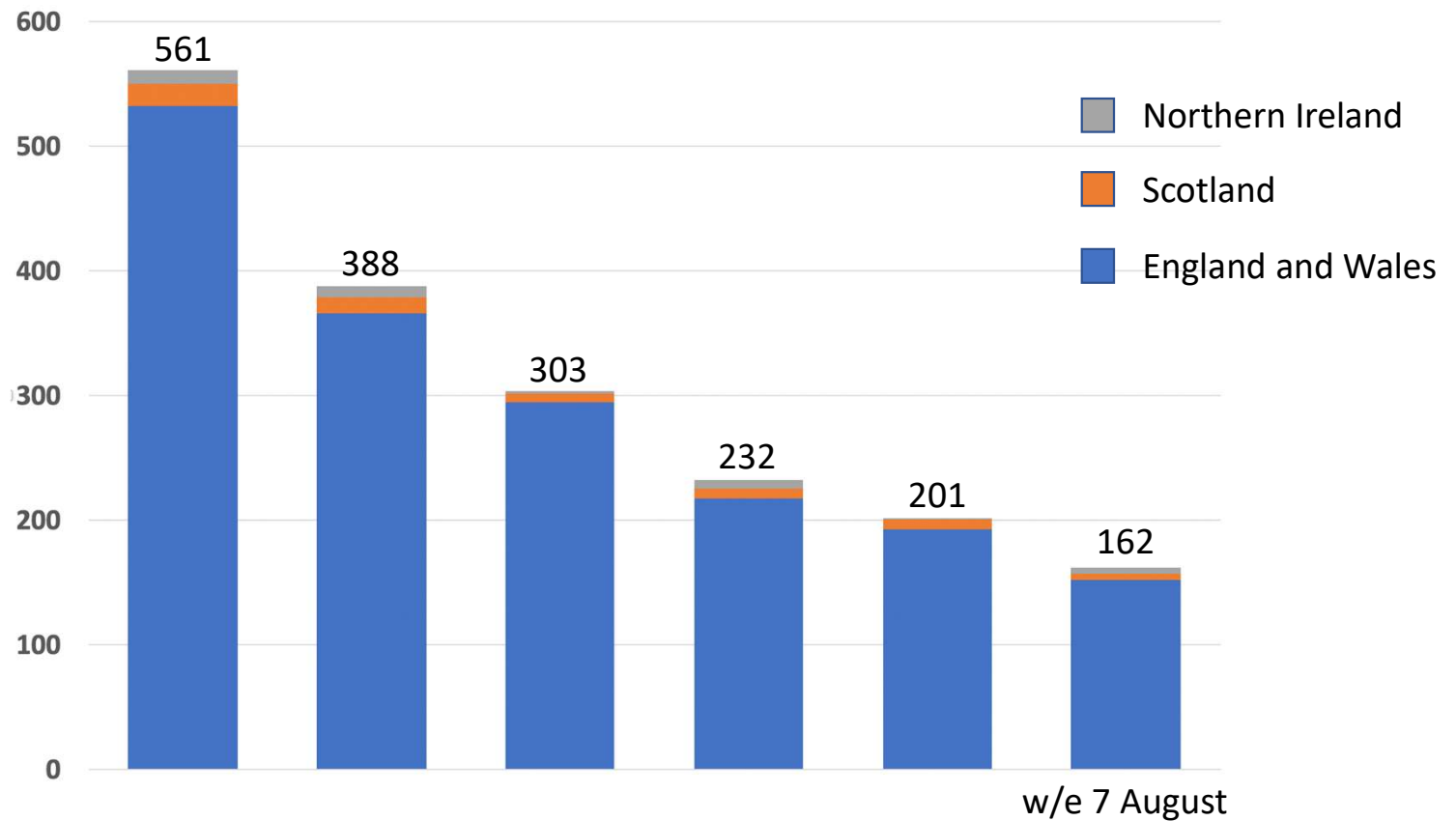
We have combined data from the government's daily figures<sup>1</sup>, the government's report on NHS Test and Trace<sup>2</sup>, ONS infection survey<sup>3</sup> and each nation's official death registries.

1. Deaths UK
2. Hospital admissions (England)
3. Positive Cases (England)
4. Testing turnaround (England)

1. <https://coronavirus.data.gov.uk/>
2. <https://www.gov.uk/government/collections/nhs-test-and-trace-statistics-england-weekly-reports>
3. <https://www.ons.gov.uk/peoplepopulationandcommunity/healthandsocialcare/conditionsanddiseases/bulletins/coronaviruscovid19infectionsurveysurvey/latest>

## Number of UK deaths from COVID-19 per week

These are **registered deaths** where **COVID-19** was mentioned on the death certificate, regardless of location



Data from :

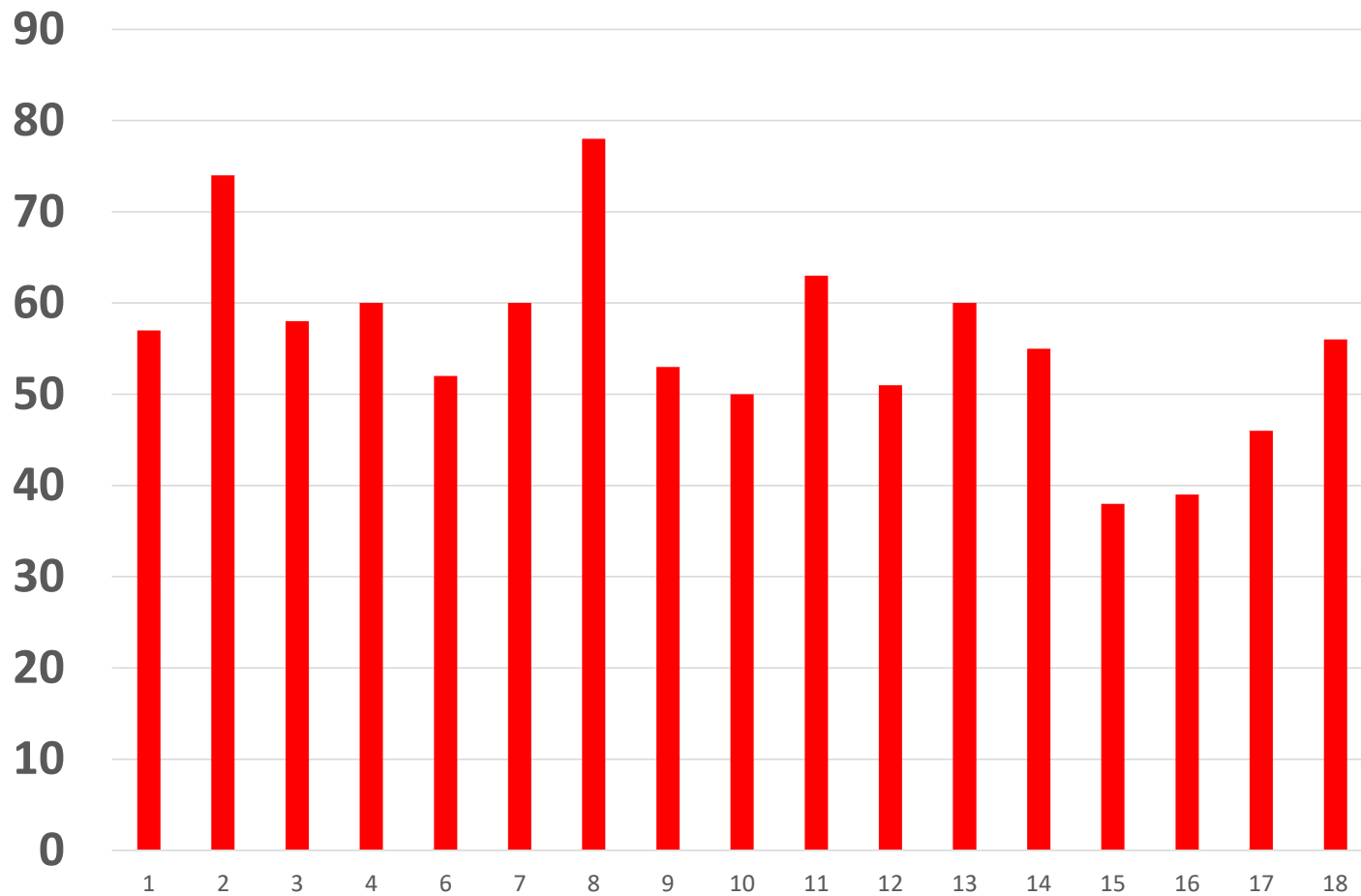
England and Wales: [www.ons.gov.uk/peoplepopulationandcommunity/birthsdeathsandmarriages/deaths/bulletins/deathsregisteredweeklyinenglandandwalesprovisional/latest](https://www.ons.gov.uk/peoplepopulationandcommunity/birthsdeathsandmarriages/deaths/bulletins/deathsregisteredweeklyinenglandandwalesprovisional/latest)

Scotland: [www.nrscotland.gov.uk/statistics-and-data/statistics/statistics-by-theme/vital-events/general-publications/weekly-and-monthly-data-on-births-and-deaths/deaths-involving-coronavirus-covid-19-in-scotland](https://www.nrscotland.gov.uk/statistics-and-data/statistics/statistics-by-theme/vital-events/general-publications/weekly-and-monthly-data-on-births-and-deaths/deaths-involving-coronavirus-covid-19-in-scotland)

Northern Ireland: [www.nisra.gov.uk/publications/weekly-deaths](https://www.nisra.gov.uk/publications/weekly-deaths)

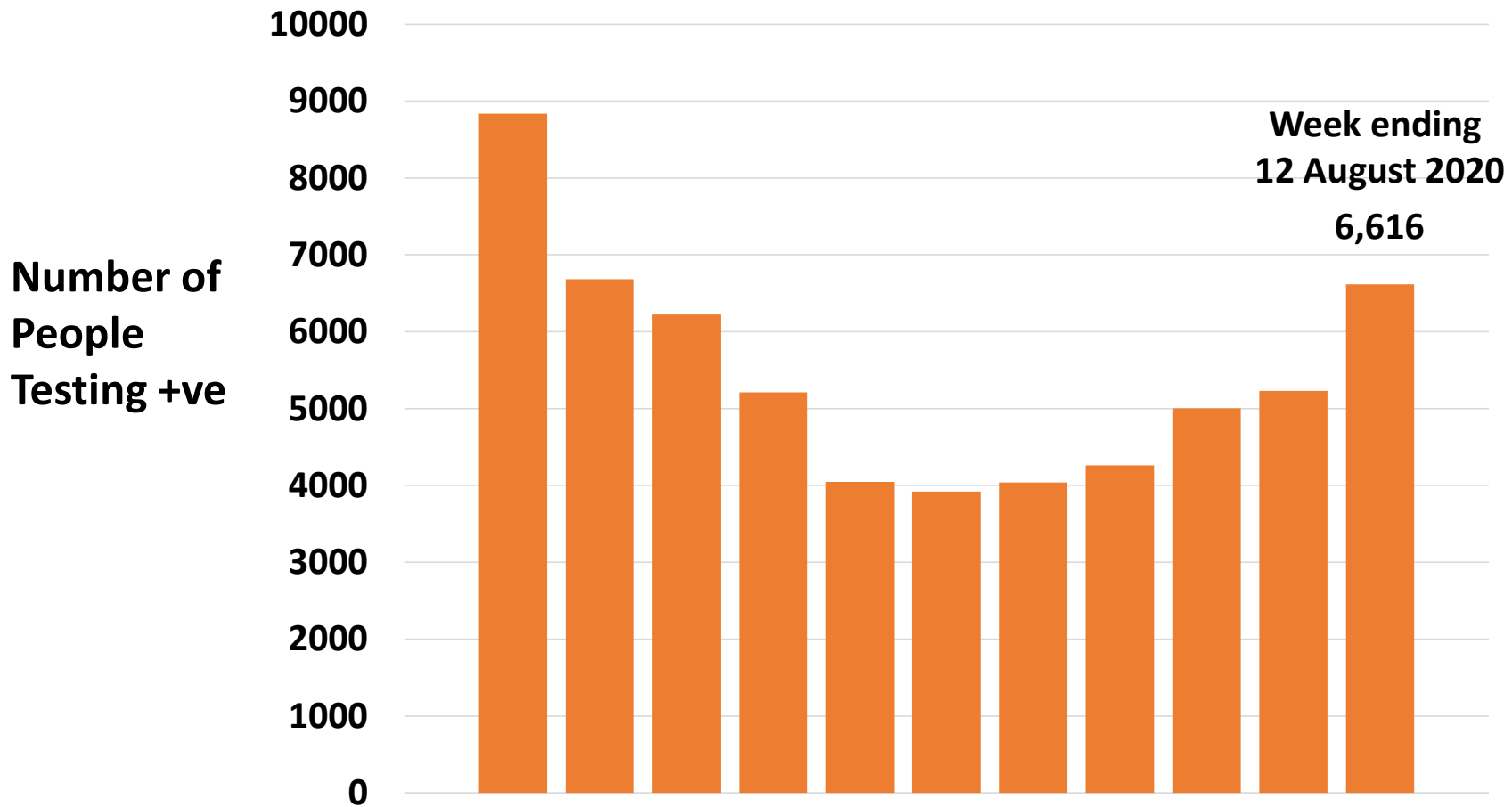
## Daily Hospital Admissions for COVID-19 in England - August

Number of Admissions



Source: <https://coronavirus.data.gov.uk/healthcare>

## Weekly No. of +ve Cases of COVID-19 England June – August



## Weekly No. of +ve Cases of COVID-19 England June – August

Week Ending	5 <sup>th</sup> August	12 <sup>th</sup> August	Percentage change
Number of People Tested	439,359	431,268	- 2%
Number of +ve Tests	5,230	6,616	+27%

## Testing Turnaround Times

### Pillar 2 (swab tests for wider population)

60.5% of in person tests results received within 24 hours compared to 70.3% the previous week.  
14.5% of home/satellite tests received within 48 hours compared to 33.2% the previous week.

<b>Week Ending</b>	<b>5<sup>th</sup> August</b>	<b>12<sup>th</sup> August</b>
<b>In Person Tests</b>	<b>70.3%</b>	<b>60.5%</b>
<b>Home/ Satellite Tests</b>	<b>33.2%</b>	<b>14.5%</b>

# Abolition of Public Health England