

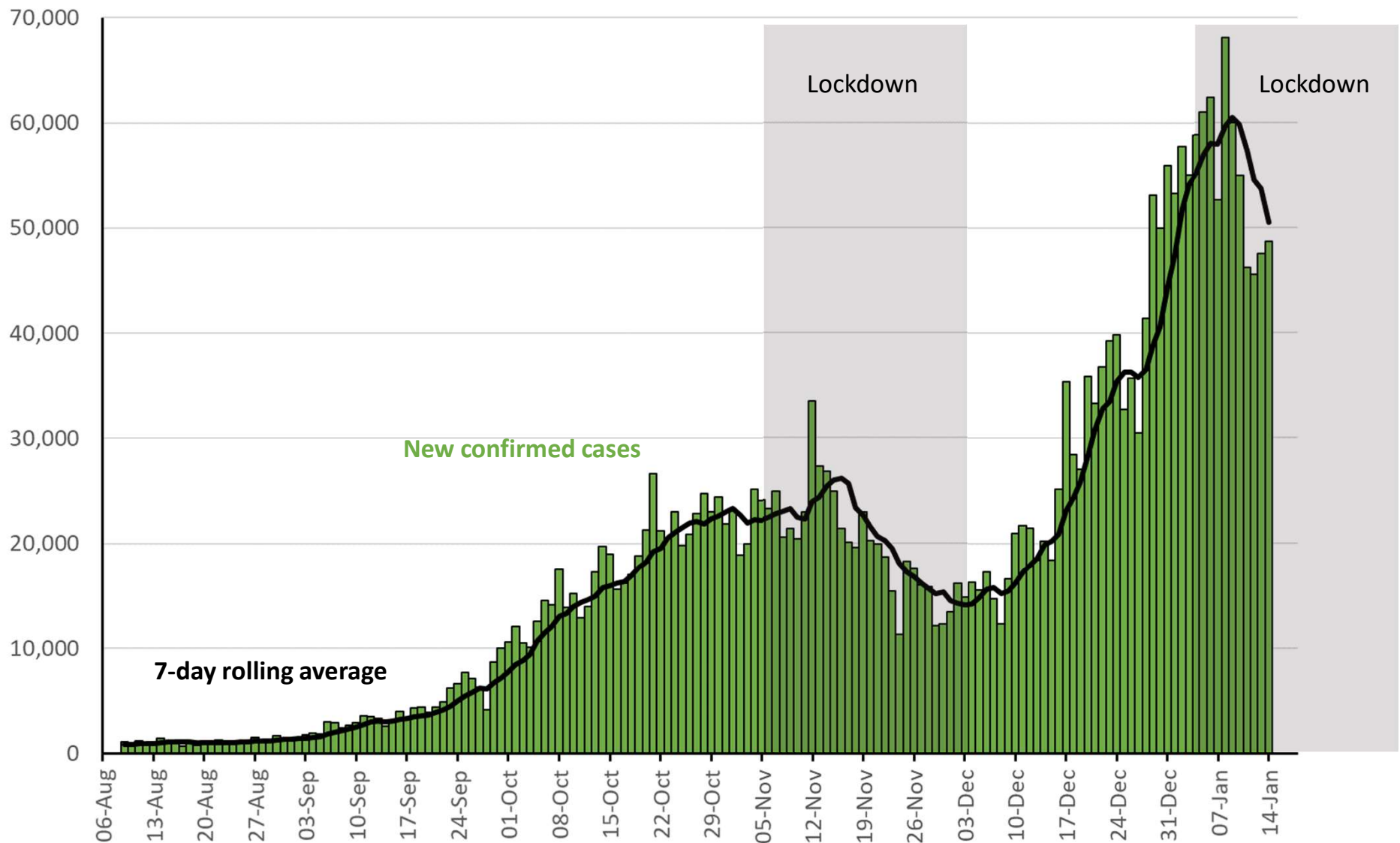
Some good news, some bad news

1. Cases
2. Hospitalisations
3. Deaths
4. Age breakdown
5. Vaccination data

NB: ONS infection survey is late reporting this week so not included in today's slides

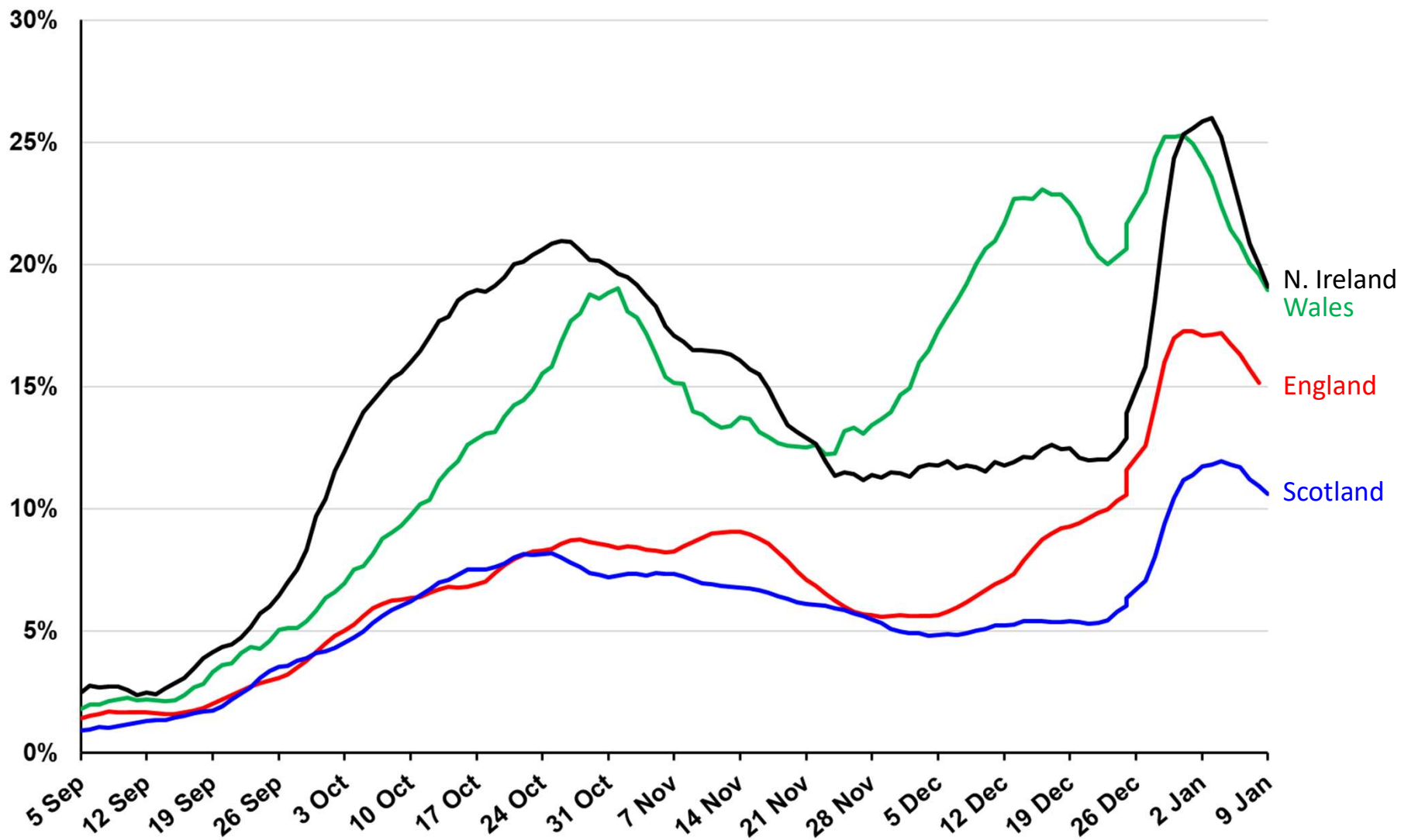
Cases

# Number of new UK confirmed COVID-19 cases by reported date (people who have had a positive test)



Data from <https://coronavirus.data.gov.uk>

# Percentage positivity – UK nations – “specimen date” to 9<sup>th</sup> Jan



Data from:

Scotland: <https://www.opendata.nhs.scot/dataset/covid-19-in-Scotland>

Wales: <https://public.tableau.com/profile/public.health.wales.health.protection#!/vizhome/RapidCOVID-19virology-Public/Headlinesummary>

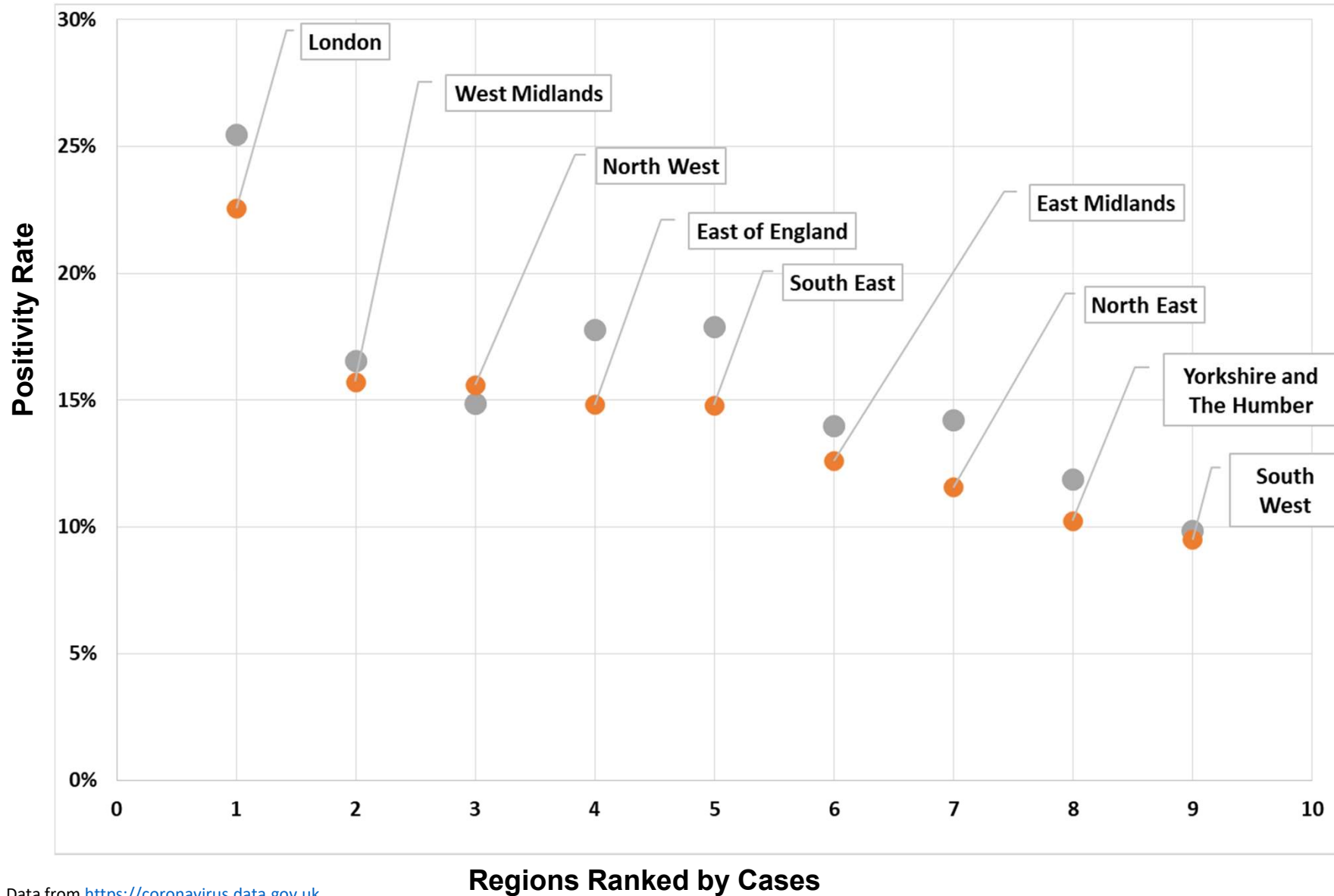
NI: <https://www.health-ni.gov.uk/publications/daily-dashboard-updates-covid-19-november-2020>

England: <https://coronavirus.data.gov.uk>

Visualisation courtesy of Bob Hawkins

# Positivity rate for all English Regions

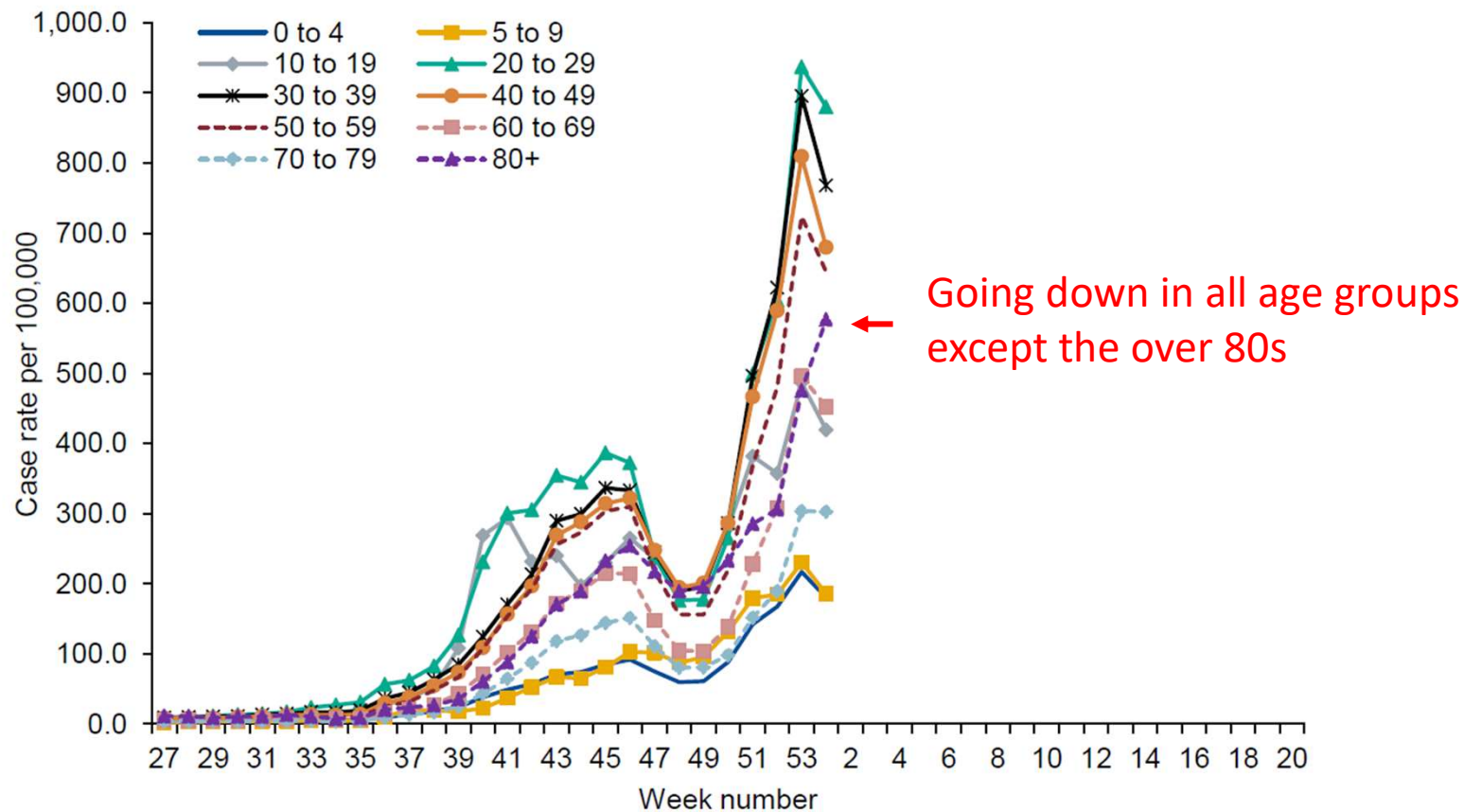
## Comparison of week ending Jan 8 to prior week



Data from <https://coronavirus.data.gov.uk>  
Visualisation courtesy of Bob Hawkins

# Cases per 100,000 people by age to 10<sup>th</sup> January

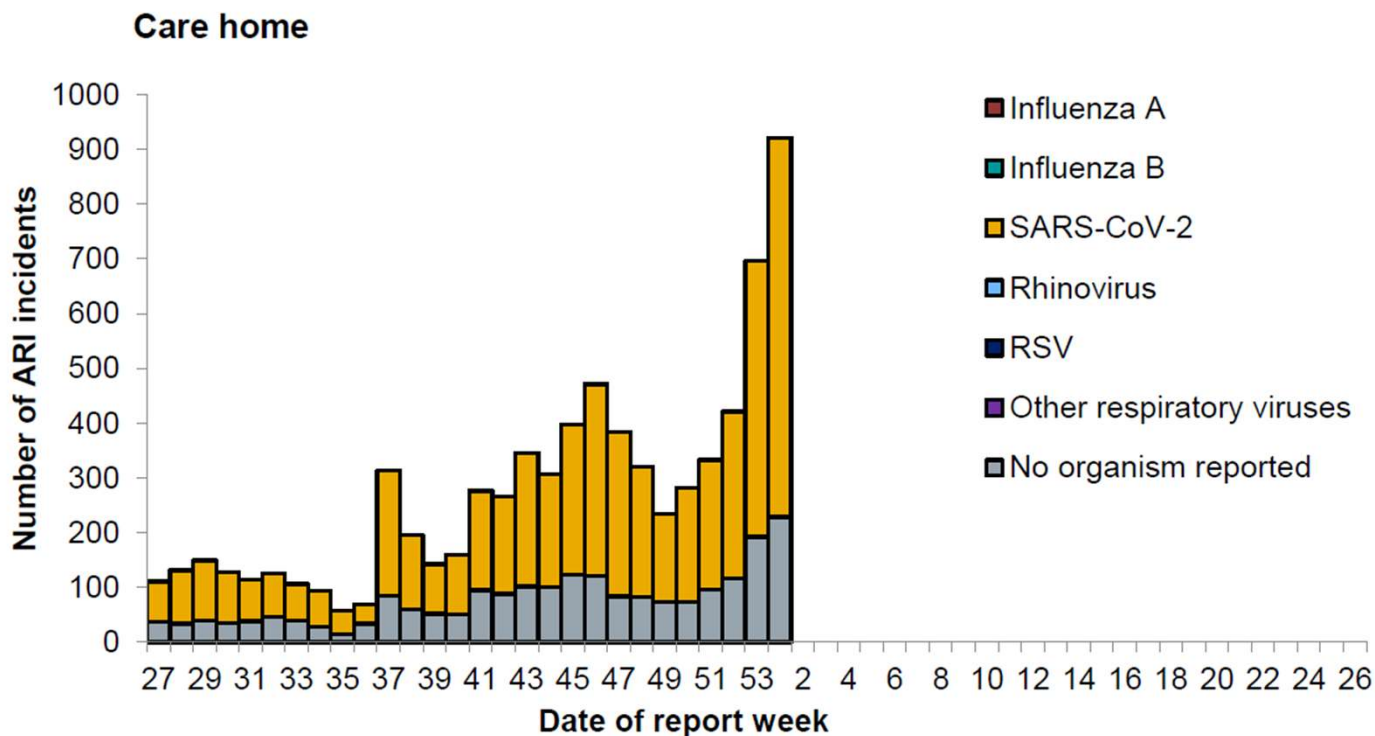
Figure 4: Weekly laboratory confirmed COVID-19 case rates per 100,000, tested under Pillar 1 and Pillar 2, by age group



## Incidents in care homes increasing (is this a Christmas effect??)

Figure 17: Number of acute respiratory infection (ARI) incidents in care homes by virus type from week 27, England

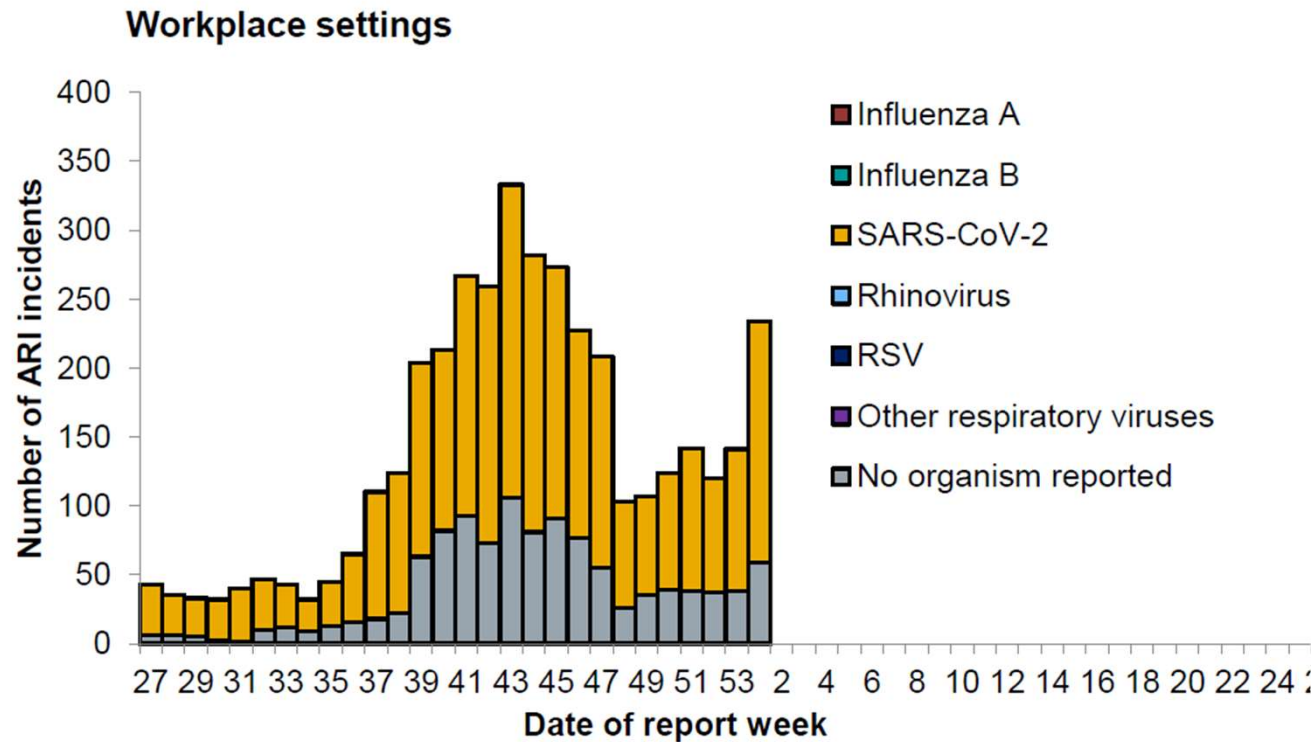
Over 15% of 85+ yr olds are in a care home



Graph from <https://www.gov.uk/government/statistics/national-flu-and-covid-19-surveillance-reports>

## Incidents in workplaces increasing

**Figure 21: Number of acute respiratory infection (ARI) incidents in workplace settings by virus type from week 27, England**



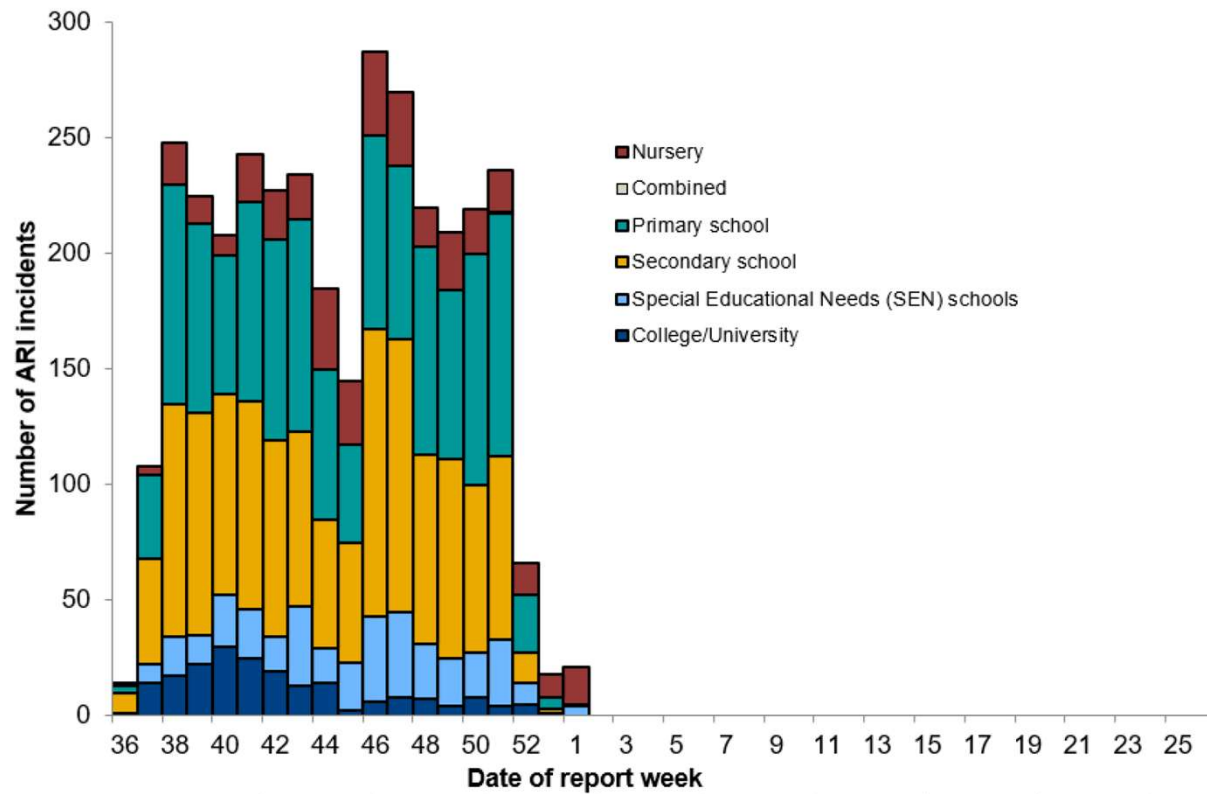
Graph from <https://www.gov.uk/government/statistics/national-flu-and-covid-19-surveillance-reports>



# Incidents in workplaces increasing but not schools

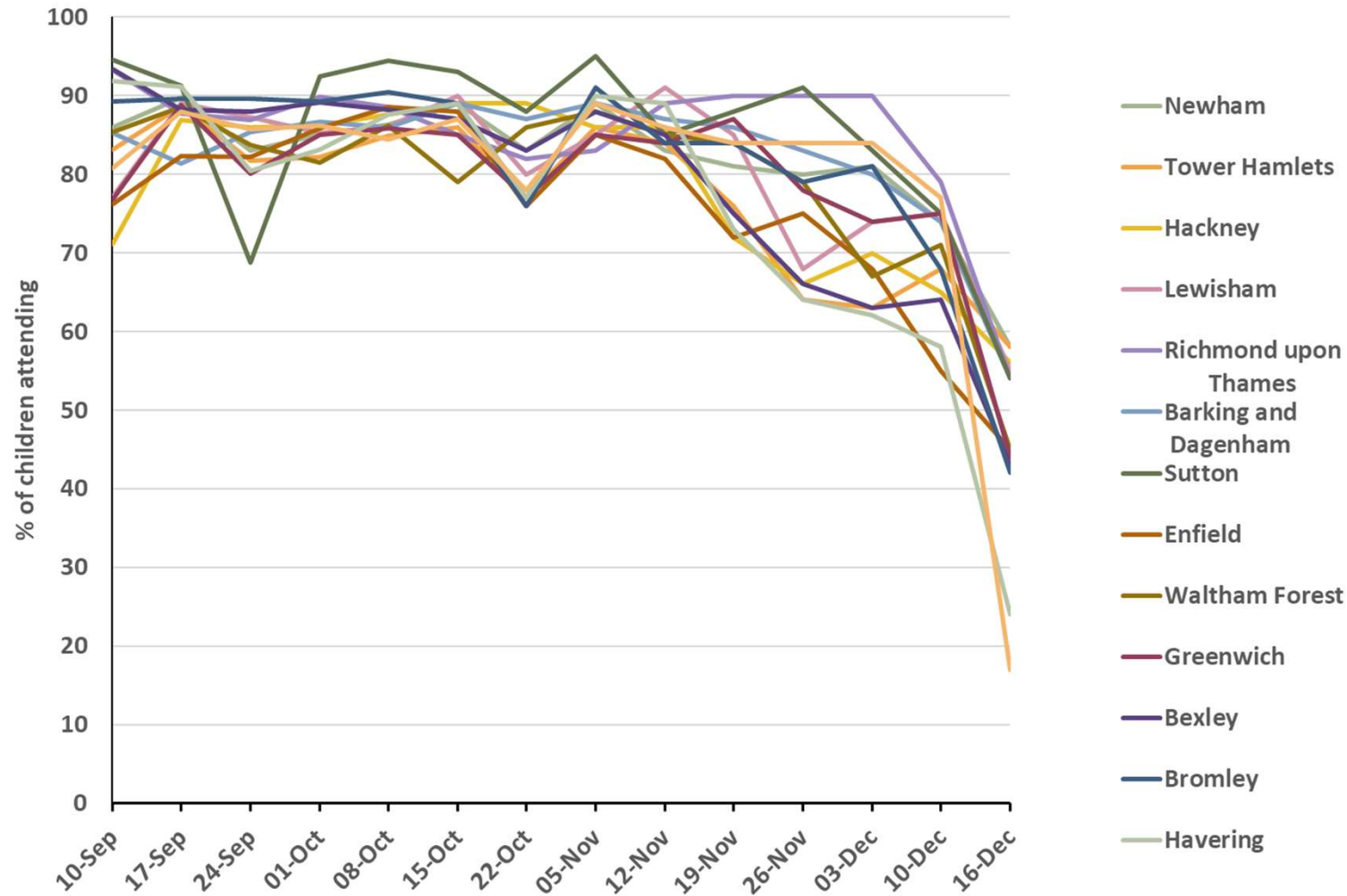


Number of COVID-19 confirmed clusters or outbreaks by type of educational setting, England



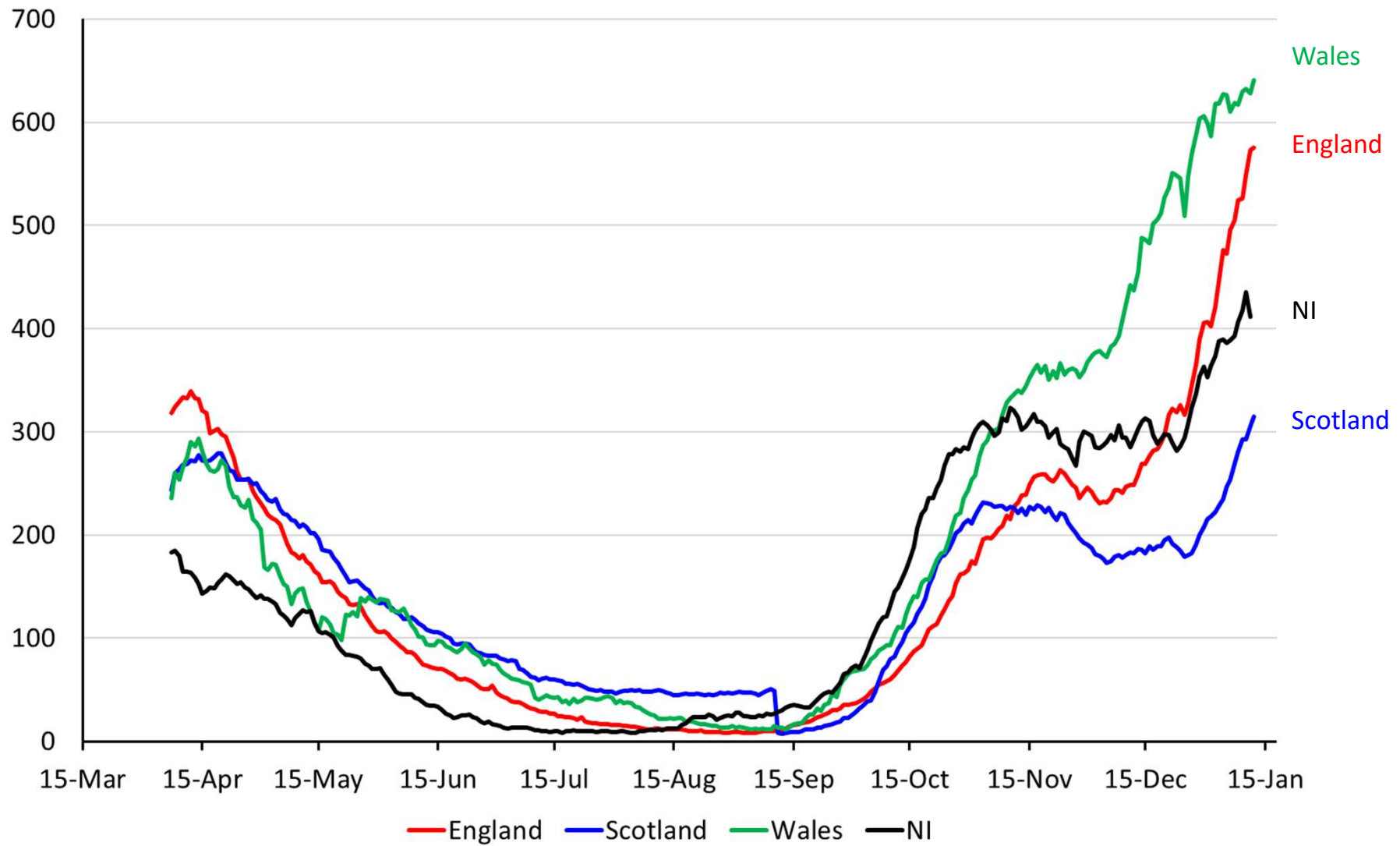
Graph from <https://www.gov.uk/government/statistics/national-flu-and-covid-19-surveillance-reports>

## The 15 London local authorities with the lowest attendance by last week of term

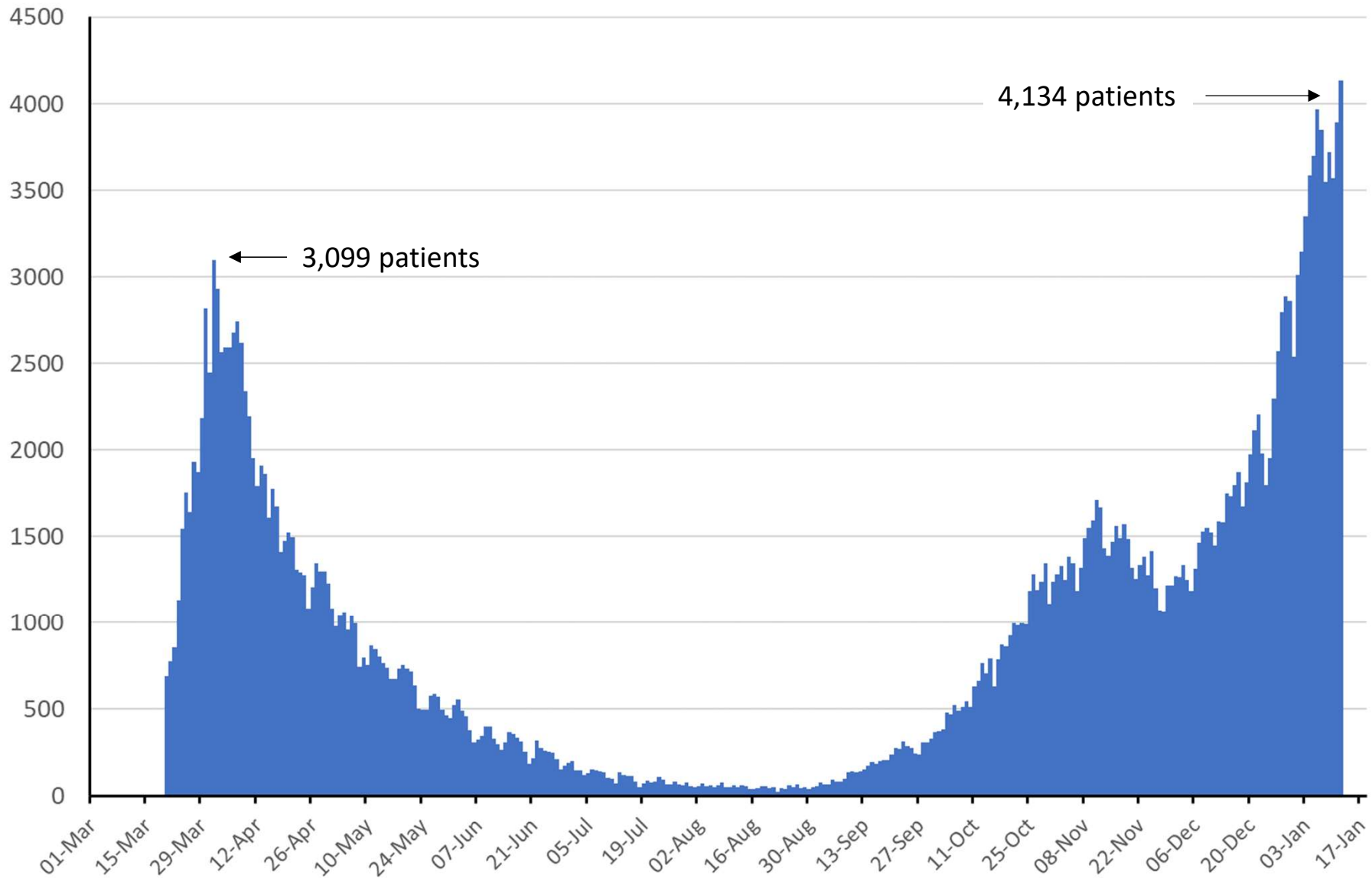


# Hospitalisations

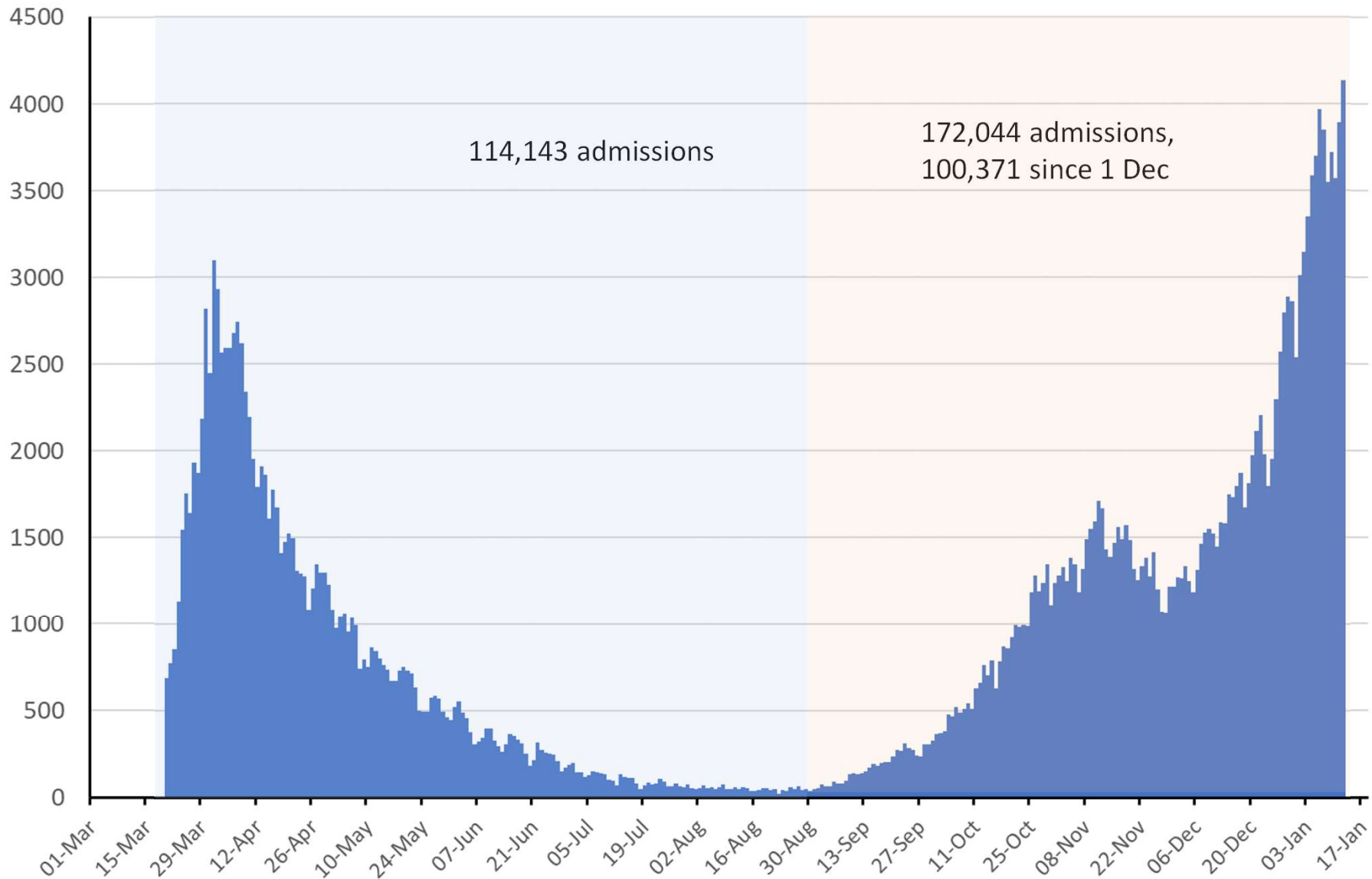
# Number of people in hospital per million people – UK nations (daily 7 day average)



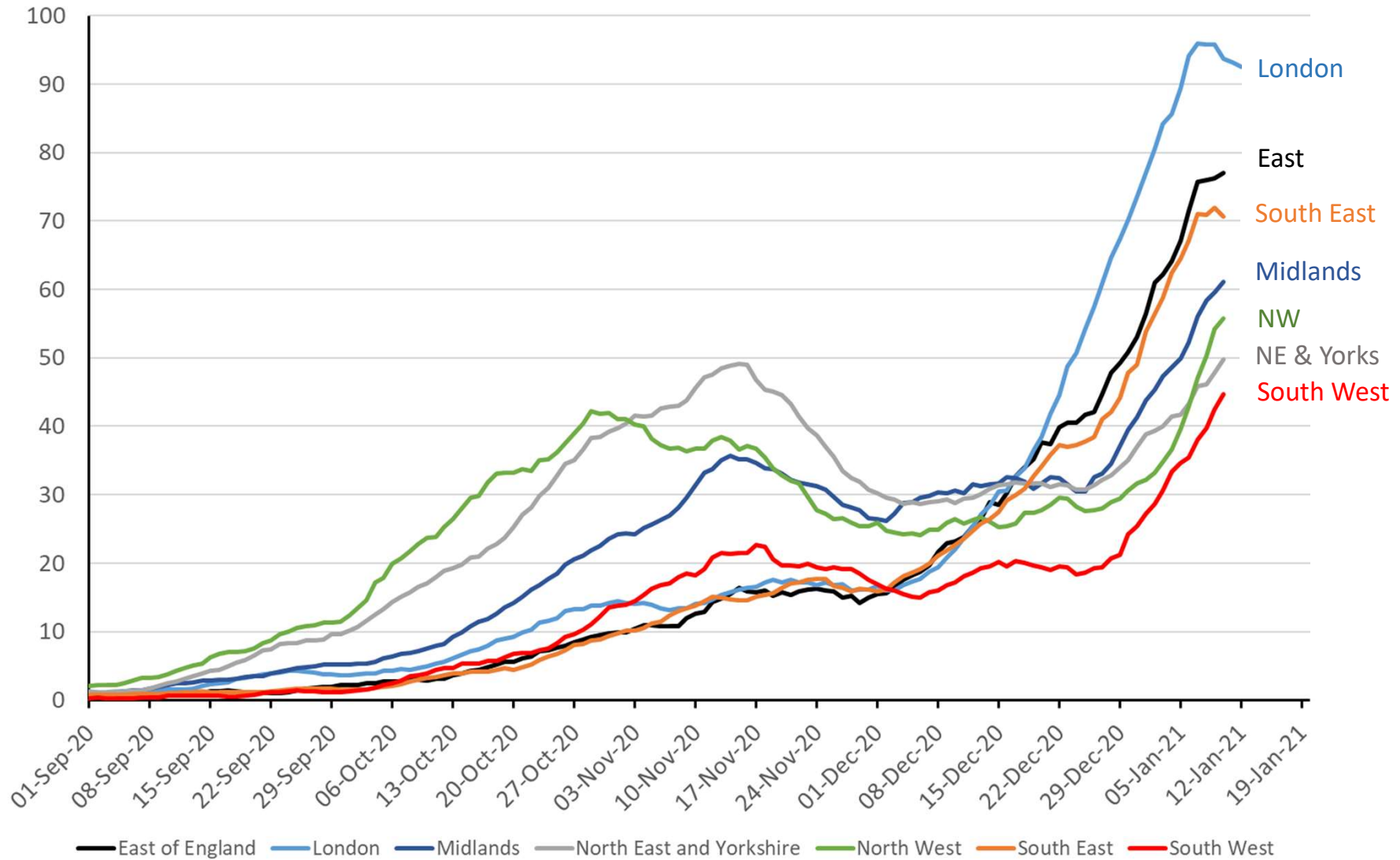
# Number of new hospital admissions with COVID-19 per day in England to 12<sup>th</sup> Jan



# Number of new hospital admissions with COVID-19 per day in England to 12<sup>th</sup> Jan – by wave (31<sup>st</sup> August boundary)

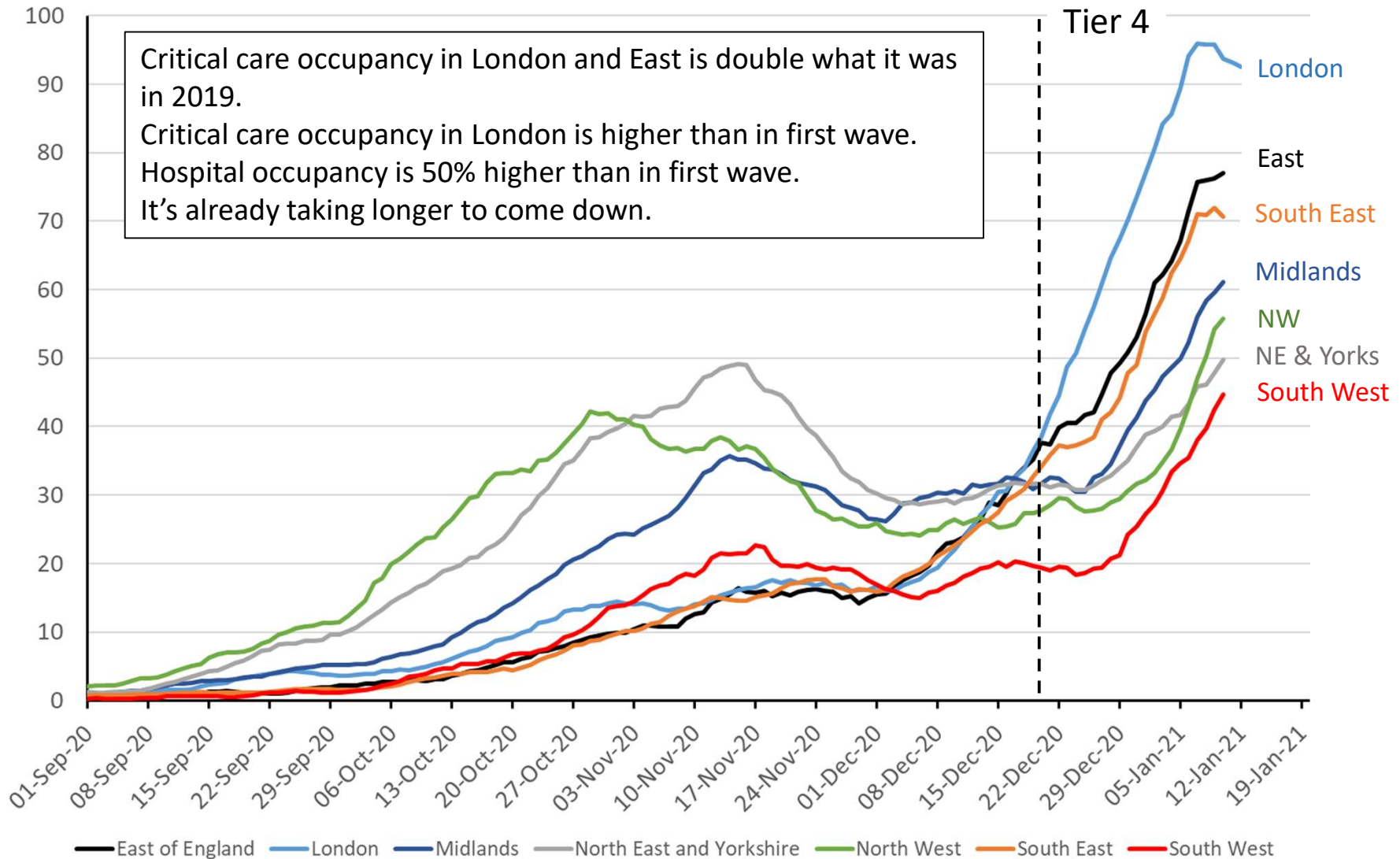


# 7-day average of daily number of new hospital admissions with COVID-19 per day / million people across different regions in England to 12<sup>th</sup> Jan



Data from <https://www.england.nhs.uk/statistics/statistical-work-areas/covid-19-hospital-activity/>

# 7-day average of daily number of new hospital admissions with COVID-19 per day / million people across different regions in England to 12<sup>th</sup> Jan

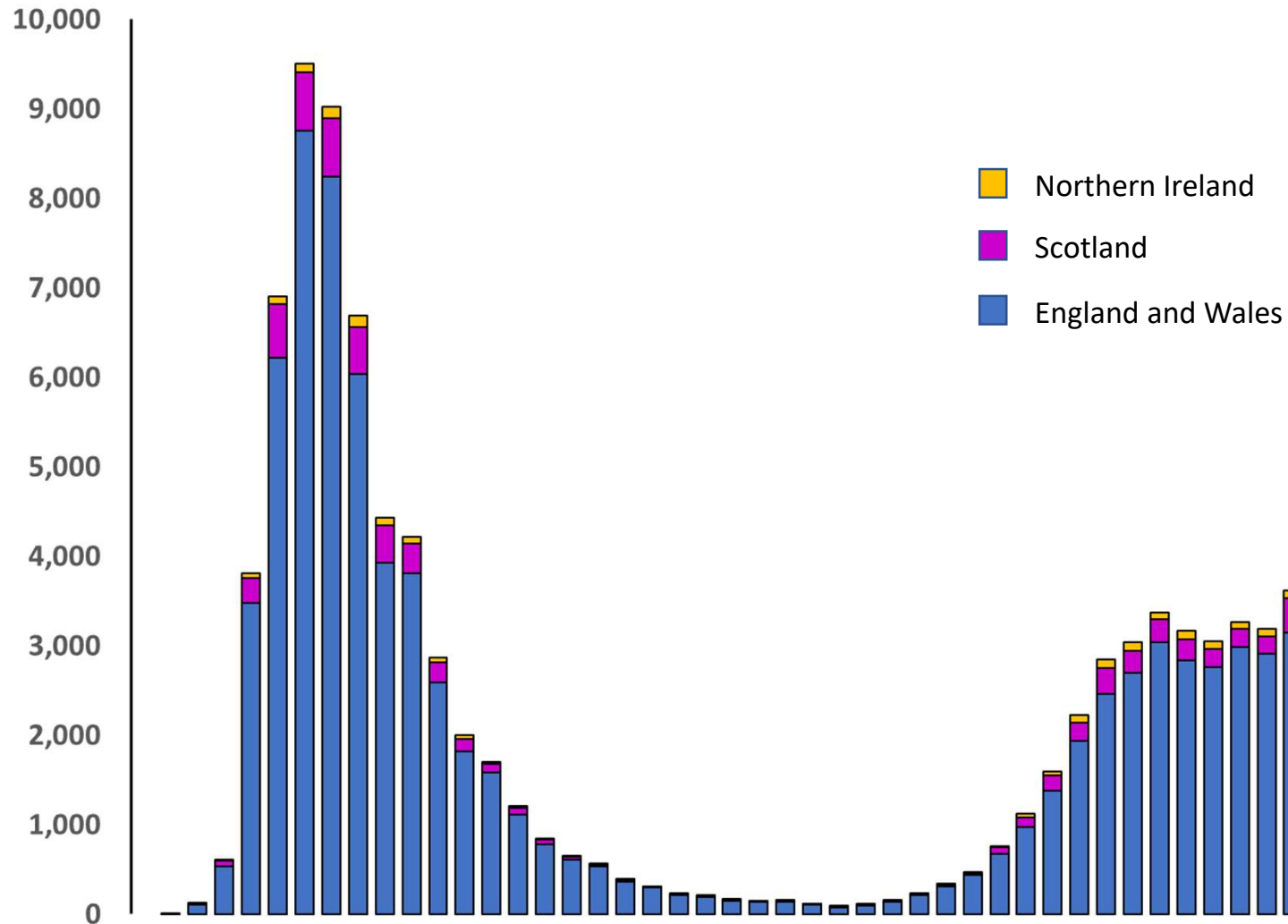


Data from <https://www.england.nhs.uk/statistics/statistical-work-areas/covid-19-hospital-activity/>



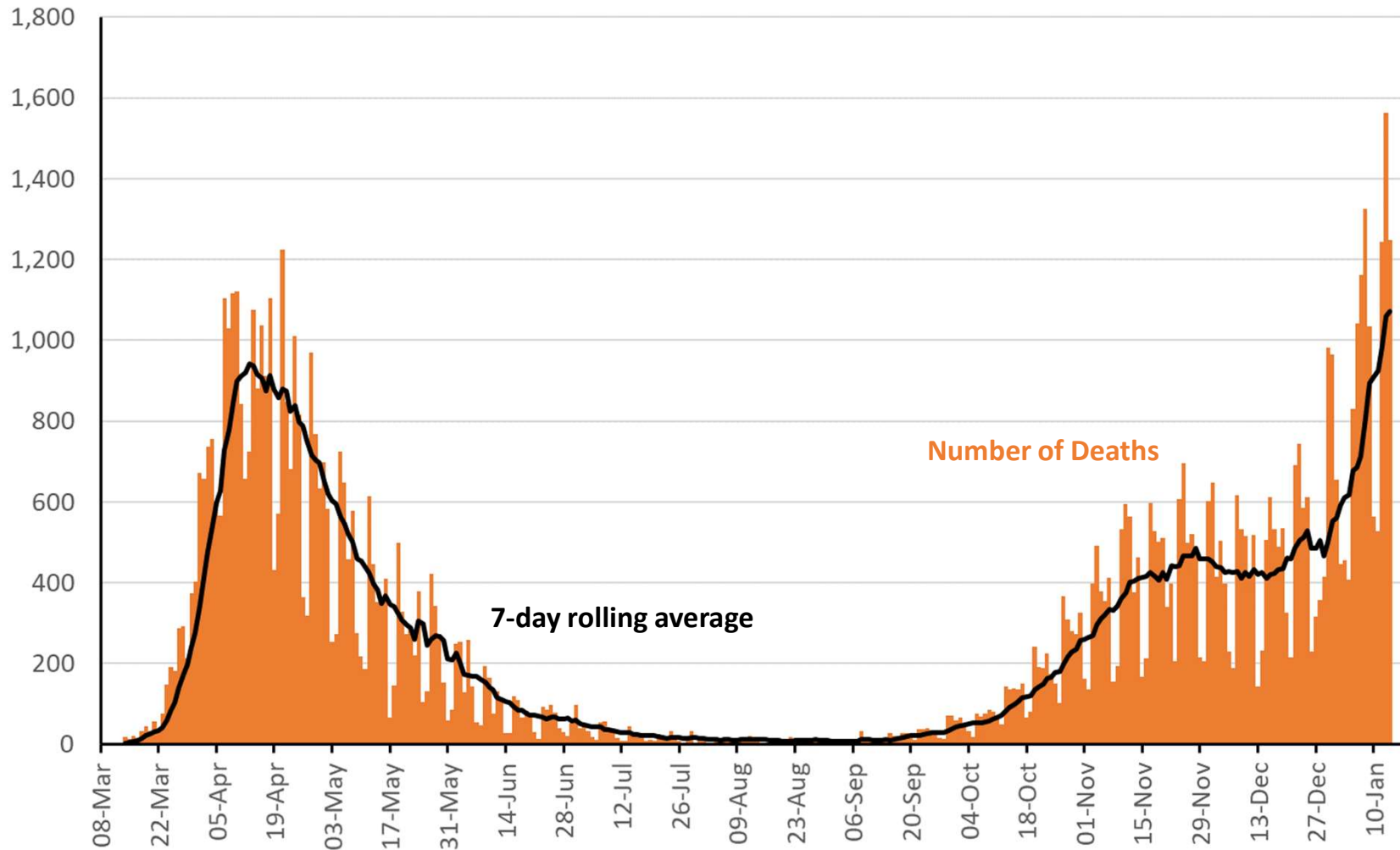
Deaths

# Number of new UK deaths from COVID-19 registered per week, to 1<sup>st</sup> January



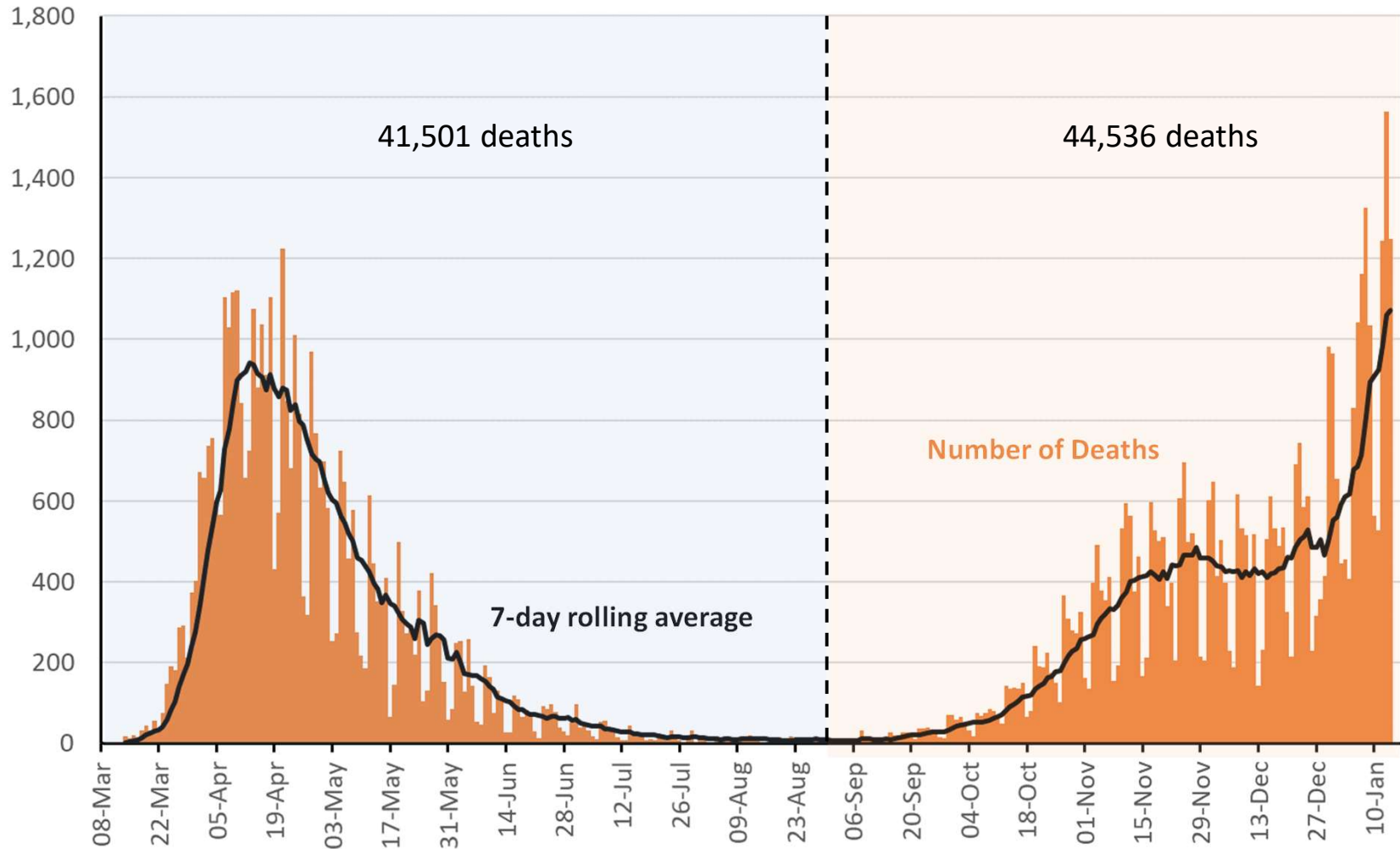
Data from :  
England and Wales: [www.ons.gov.uk/peoplepopulationandcommunity/birthsdeathsandmarriages/deaths/bulletins/deathsregisteredweeklyinenglandandwalesprovisional/latest](https://www.ons.gov.uk/peoplepopulationandcommunity/birthsdeathsandmarriages/deaths/bulletins/deathsregisteredweeklyinenglandandwalesprovisional/latest)  
Scotland: <https://data.gov.scot/coronavirus-covid-19/detail.html>  
Northern Ireland: [www.nisra.gov.uk/publications/weekly-deaths](https://www.nisra.gov.uk/publications/weekly-deaths)

# Number of deaths within 28 days of +ve COVID test reported per day across the UK to 14<sup>th</sup> Jan



Data from <https://coronavirus.data.gov.uk/>

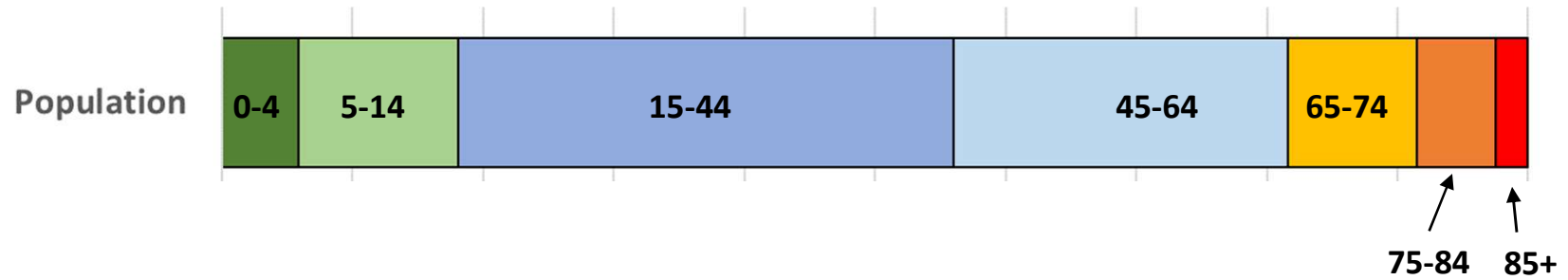
# Number of deaths within 28 days of +ve COVID test reported per day across the UK to 14<sup>th</sup> Jan – by wave (31<sup>st</sup> August boundary)



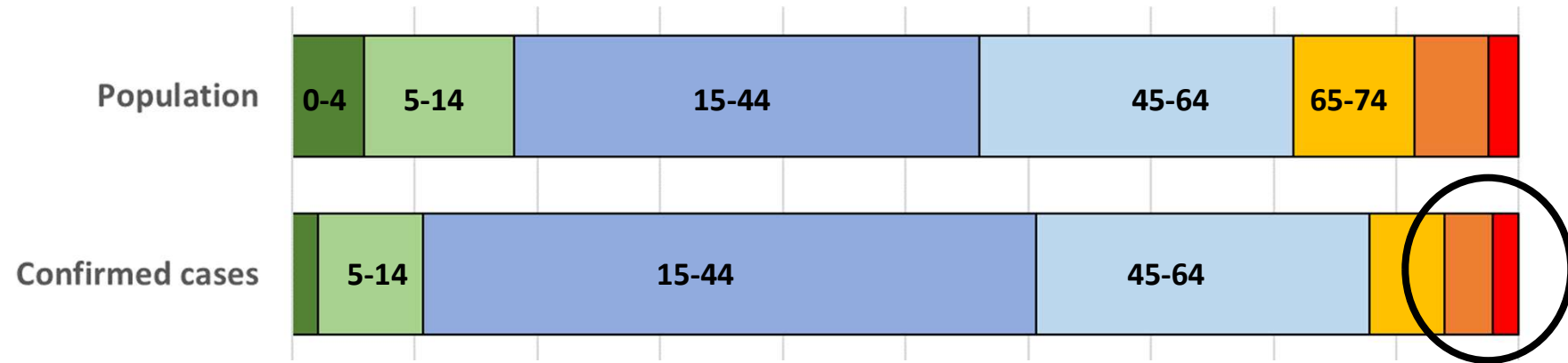
Data from <https://coronavirus.data.gov.uk/>

# Age breakdowns

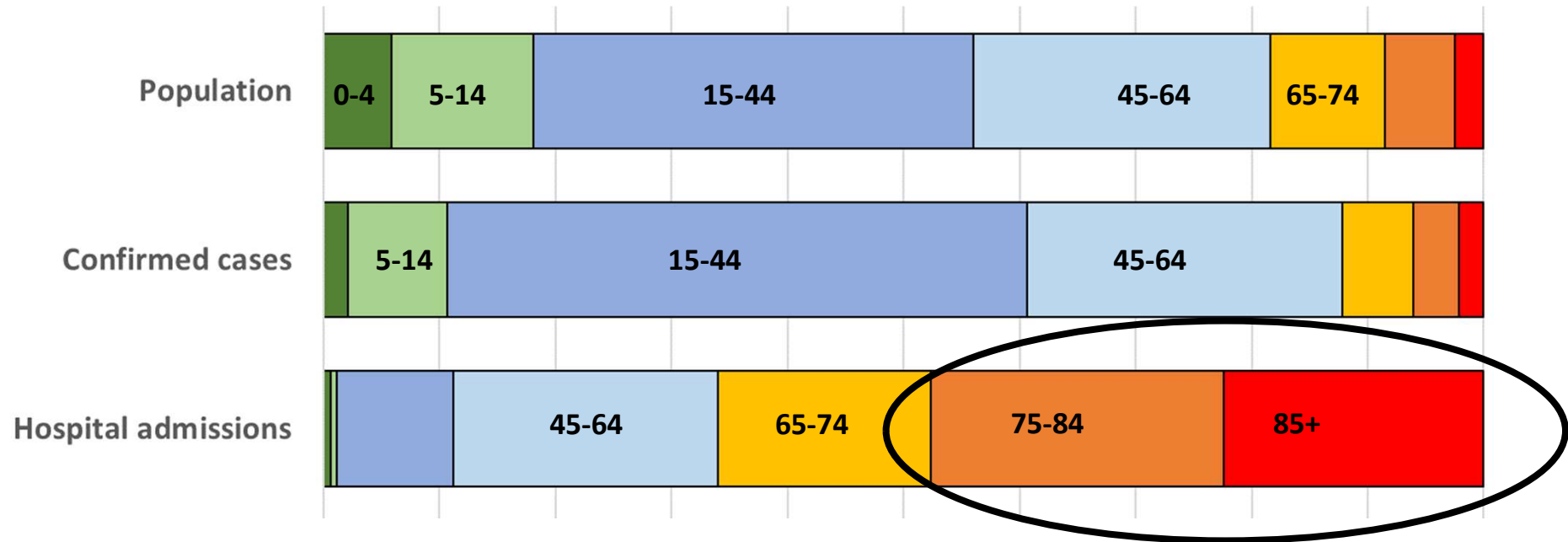
# How age plays a role in infections, hospitalisations, deaths and vaccinations (using data since October)



## How age plays a role in infections, hospitalisations, deaths and vaccinations (using data since October)

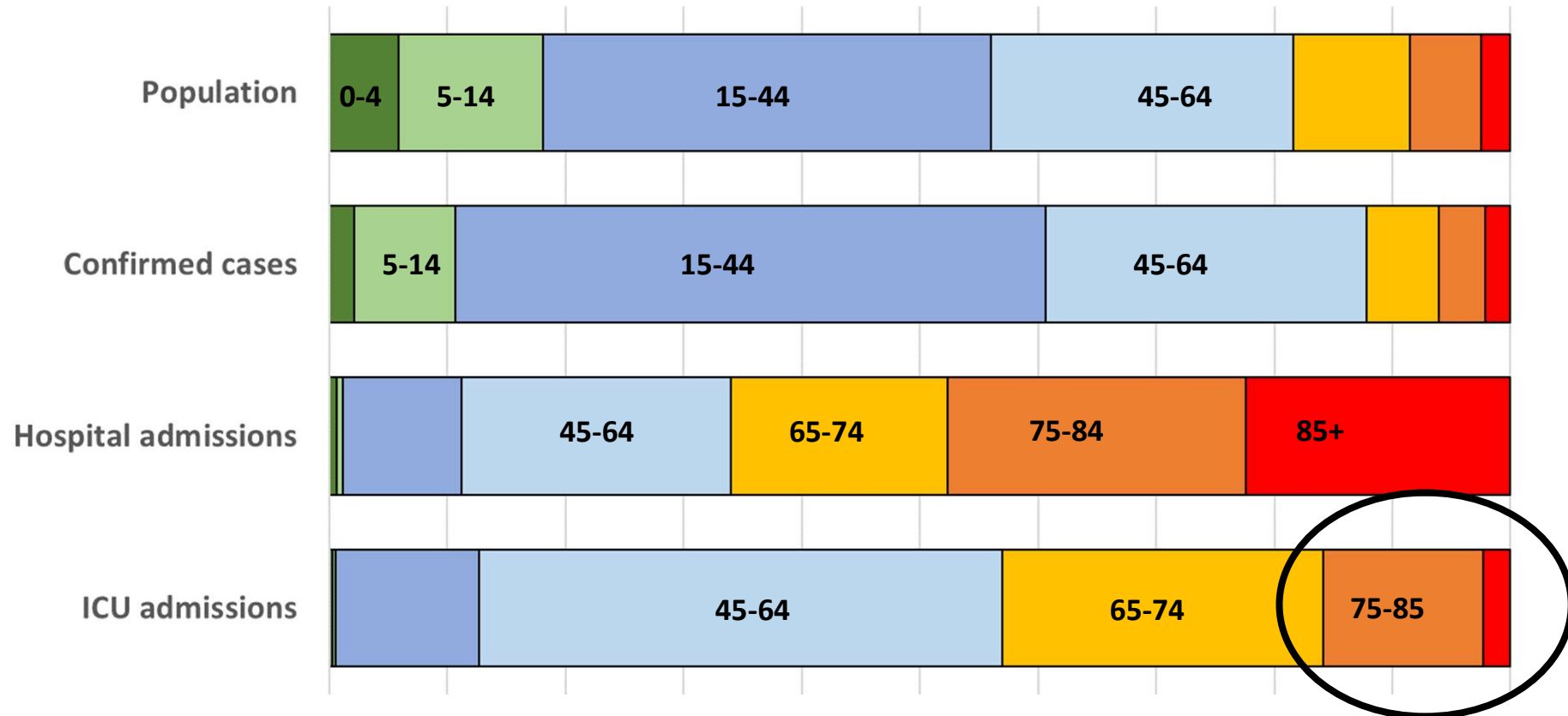


## How age plays a role in infections, hospitalisations, deaths and vaccinations (using data since October)

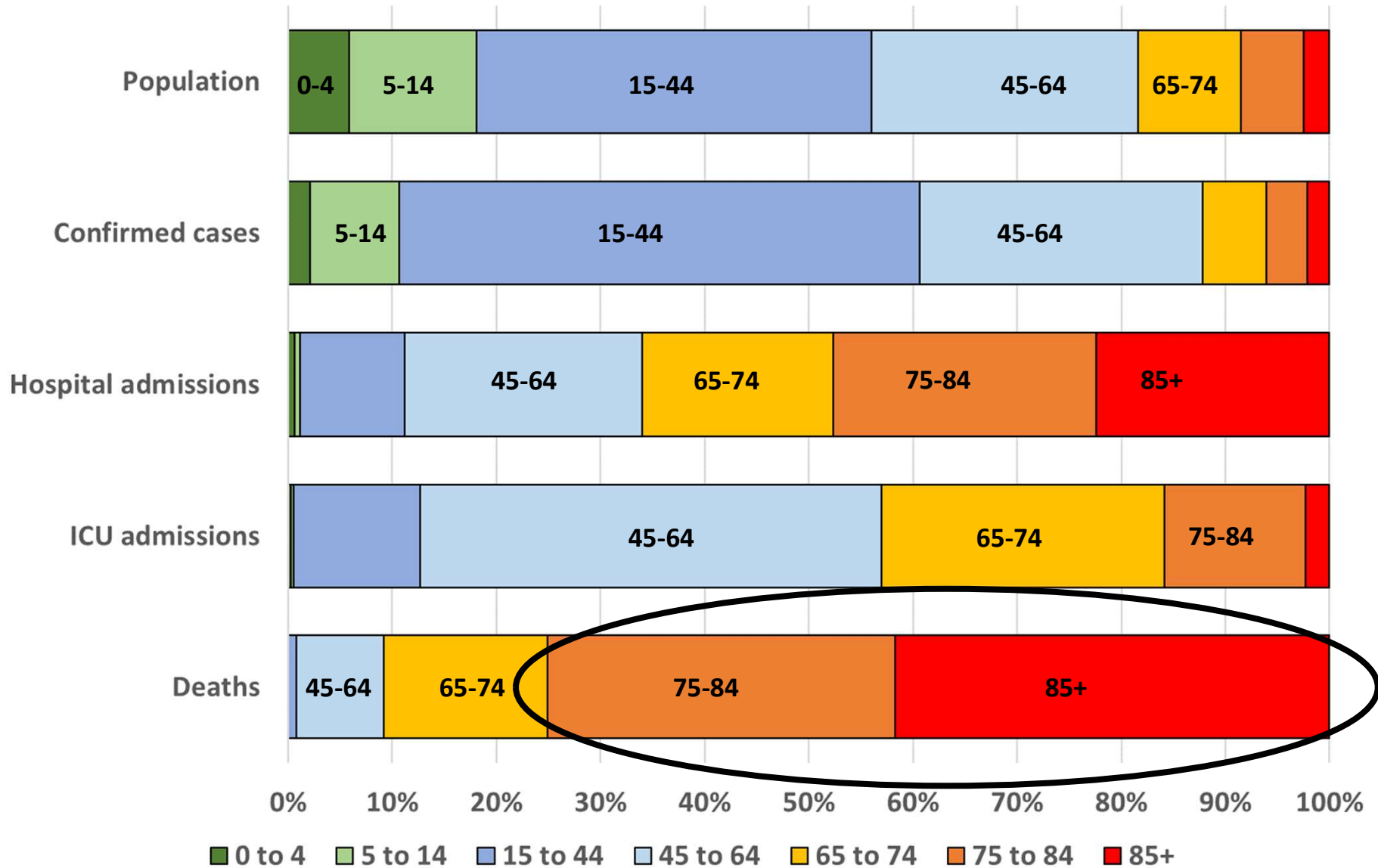




## How age plays a role in infections, hospitalisations, deaths and vaccinations (using data since October)



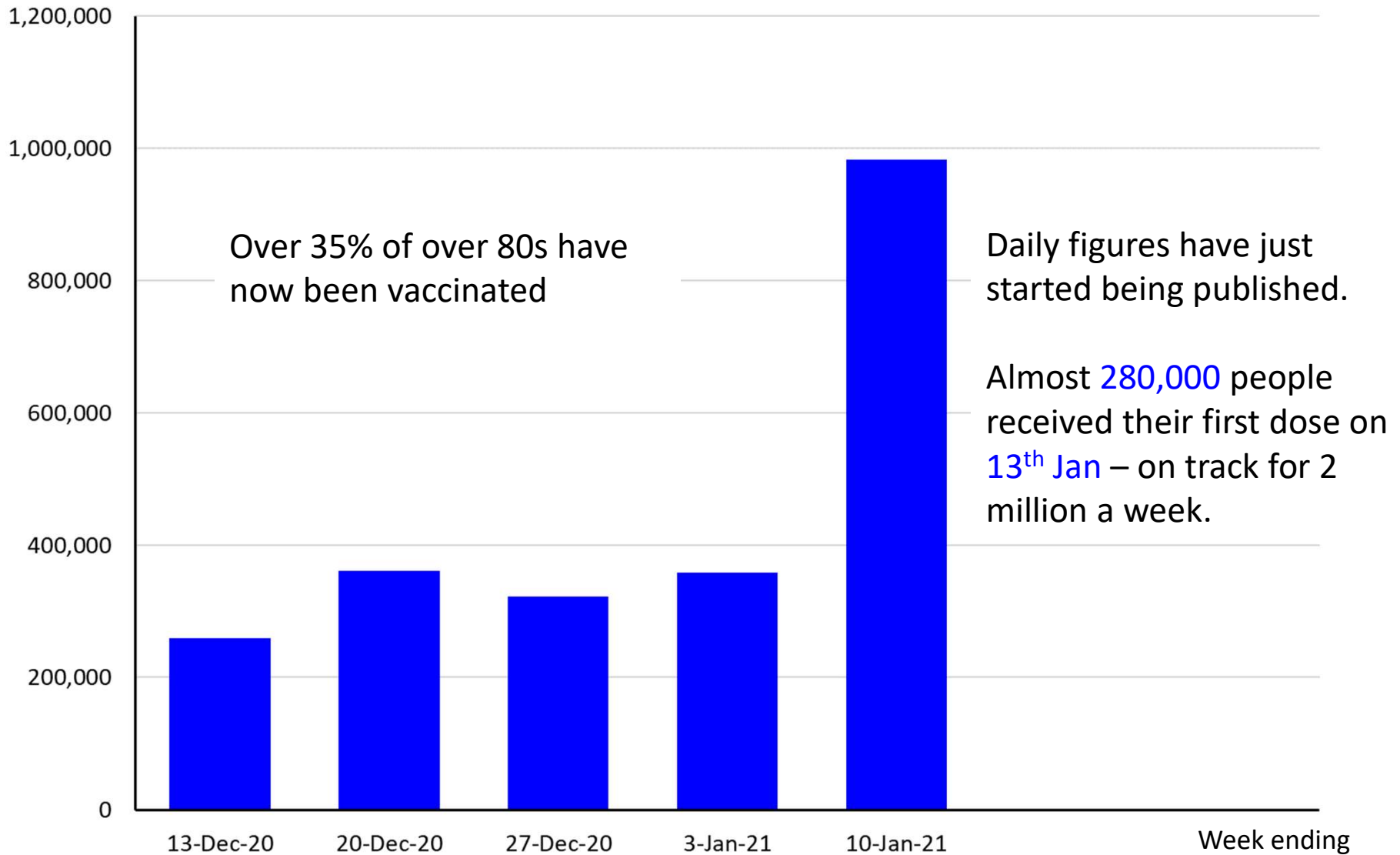
# How age plays a role in infections, hospitalisations, deaths and vaccinations (using data since October)



Data from <https://www.gov.uk/government/statistics/national-flu-and-covid-19-surveillance-reports>  
<https://www.ons.gov.uk/peoplepopulationandcommunity/birthsdeathsandmarriages/deaths/bulletins/deathsregisteredweeklyinenglandandwalesprovisional/latest>

Vaccination data

## Number of people vaccinated (1<sup>st</sup> jab) per week in the UK

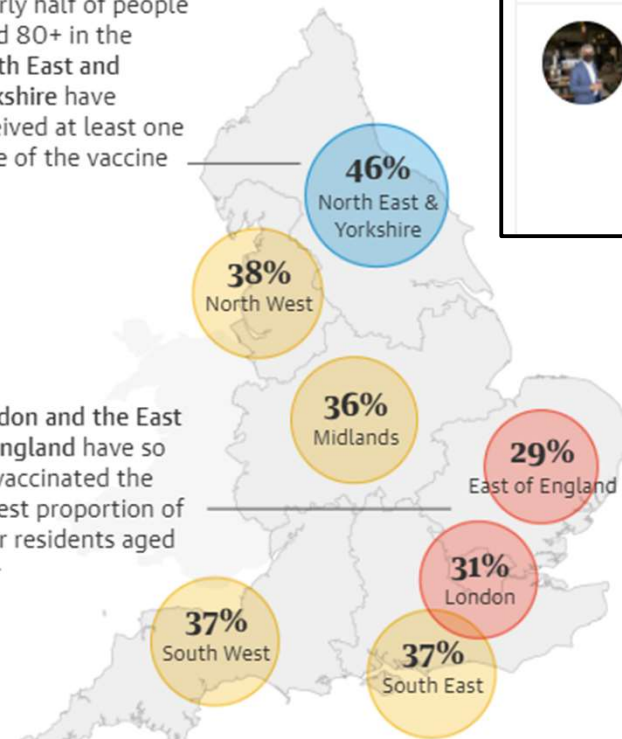


# Number of people vaccinated (1<sup>st</sup> jab) per week in the UK

## English NHS regions are administering the coronavirus vaccine to people aged 80+ at varying rates

Nearly half of people aged 80+ in the North East and Yorkshire have received at least one dose of the vaccine

London and the East of England have so far vaccinated the lowest proportion of their residents aged 80+



Guardian graphic. Source: NHS England, ONS population per NHS region



**Sadiq Khan** @SadiqKhan · 4h

The news that the Government has listened and will be scaling up the vaccine supply and rollout across London is welcome.

The situation in London remains critical. If one of your family members is offered the vaccine, please encourage them to take it.

## Summary

Case numbers and positivity rates now falling in all nations.

Hospitals are under enormous pressure which is still getting worse. Will hopefully ease over coming weeks.

Deaths will continue to increase for at least a few more weeks.

Lockdown is working but not yet well enough – possible still that cases will plateau at a high level. And we have to get cases down as fast as possible given pressure on hospitals and availability of vaccines.

Need to start planning for spring and summer now – how will keep cases low? How will we prevent new variants arising here or coming in from elsewhere?