

Latest numbers on COVID-19 in the UK – 29th January 2021

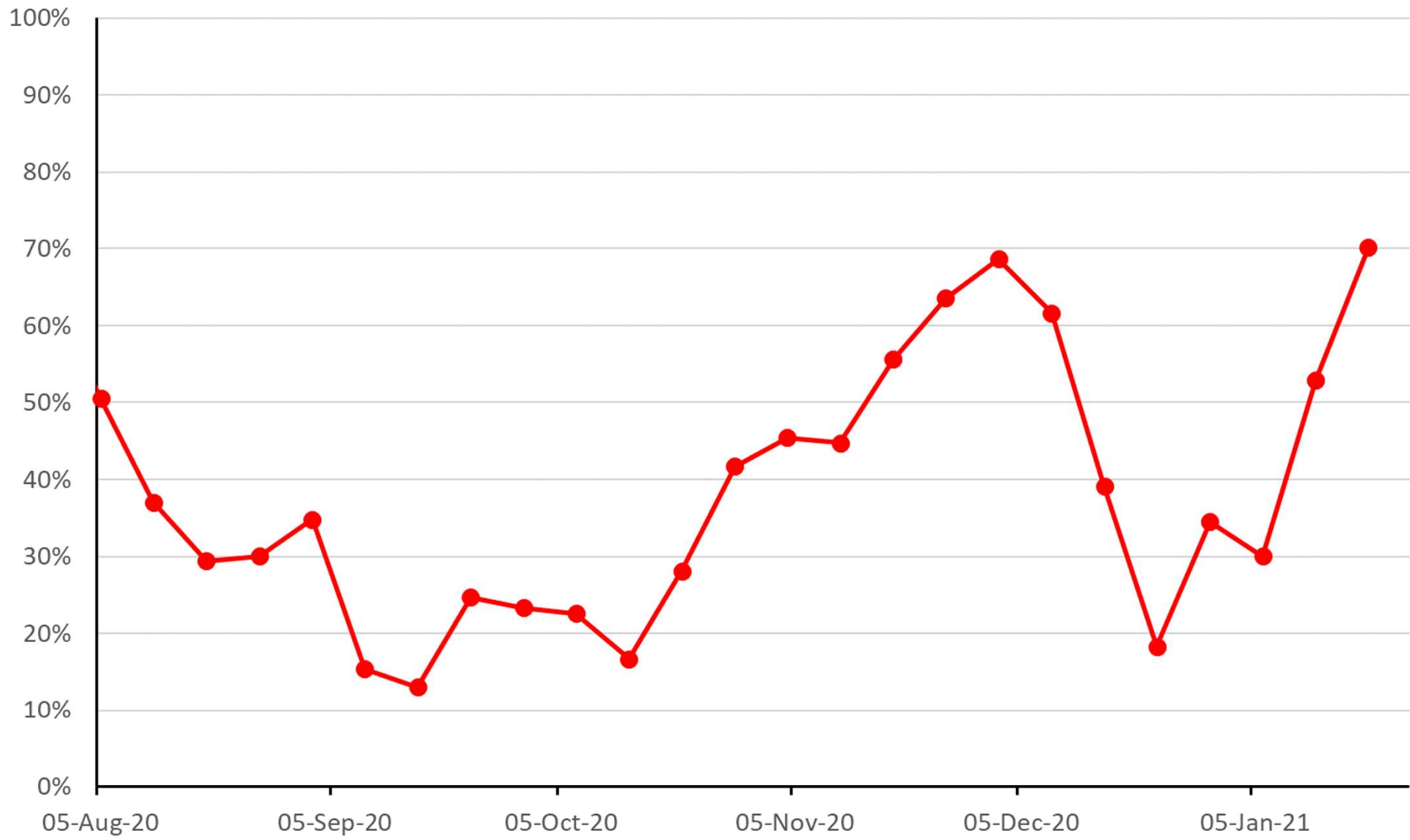
Mainly good news this week!

1. Cases
2. Hospitalisations
3. Deaths
4. Vaccination data

With many thanks to Bob Hawkins and Catherine Finney for there help in collating the data and discussions on interpretation.

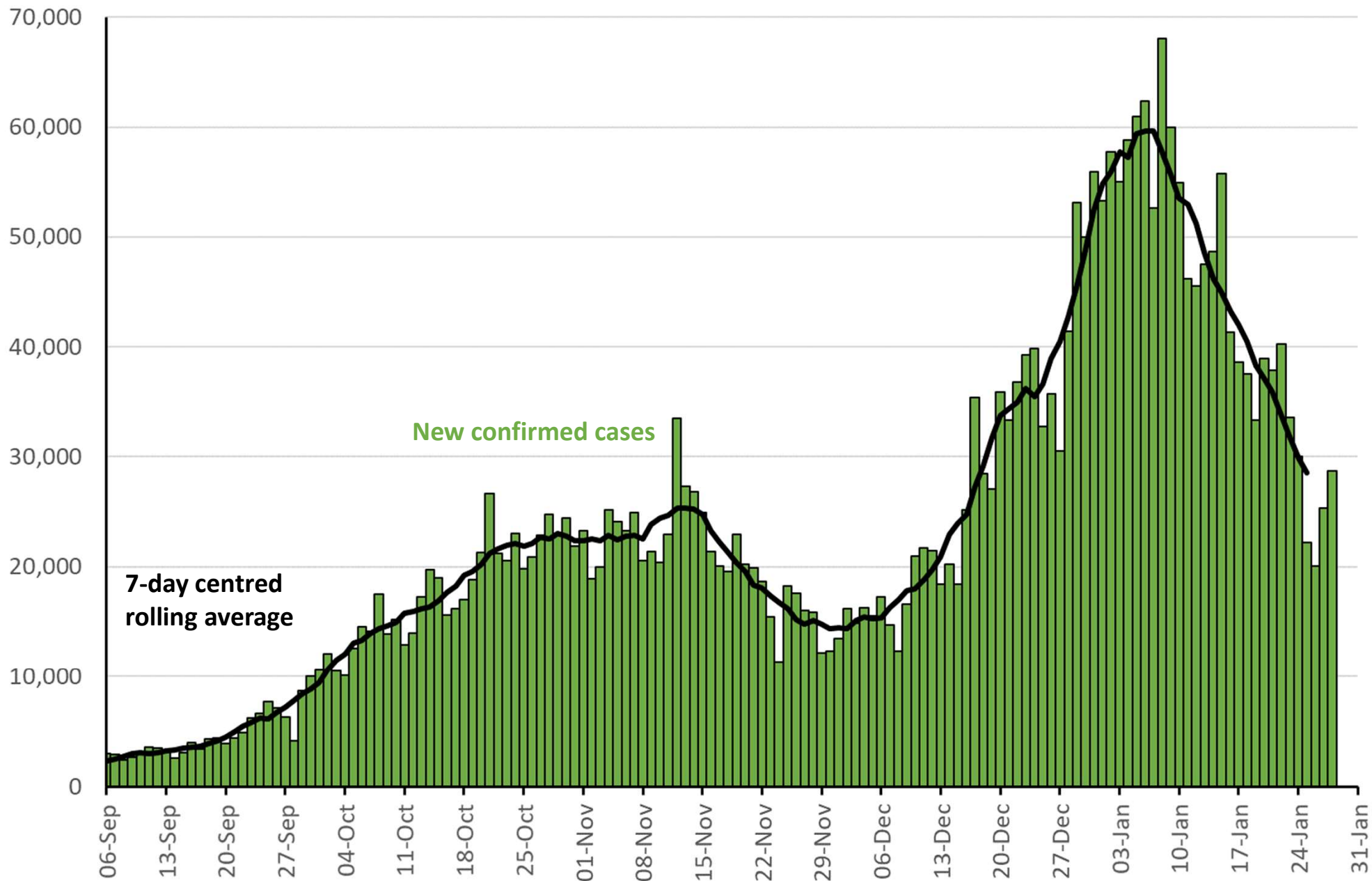
Cases

Timeliness of test results: proportion of test results received quickly (to 20th January)

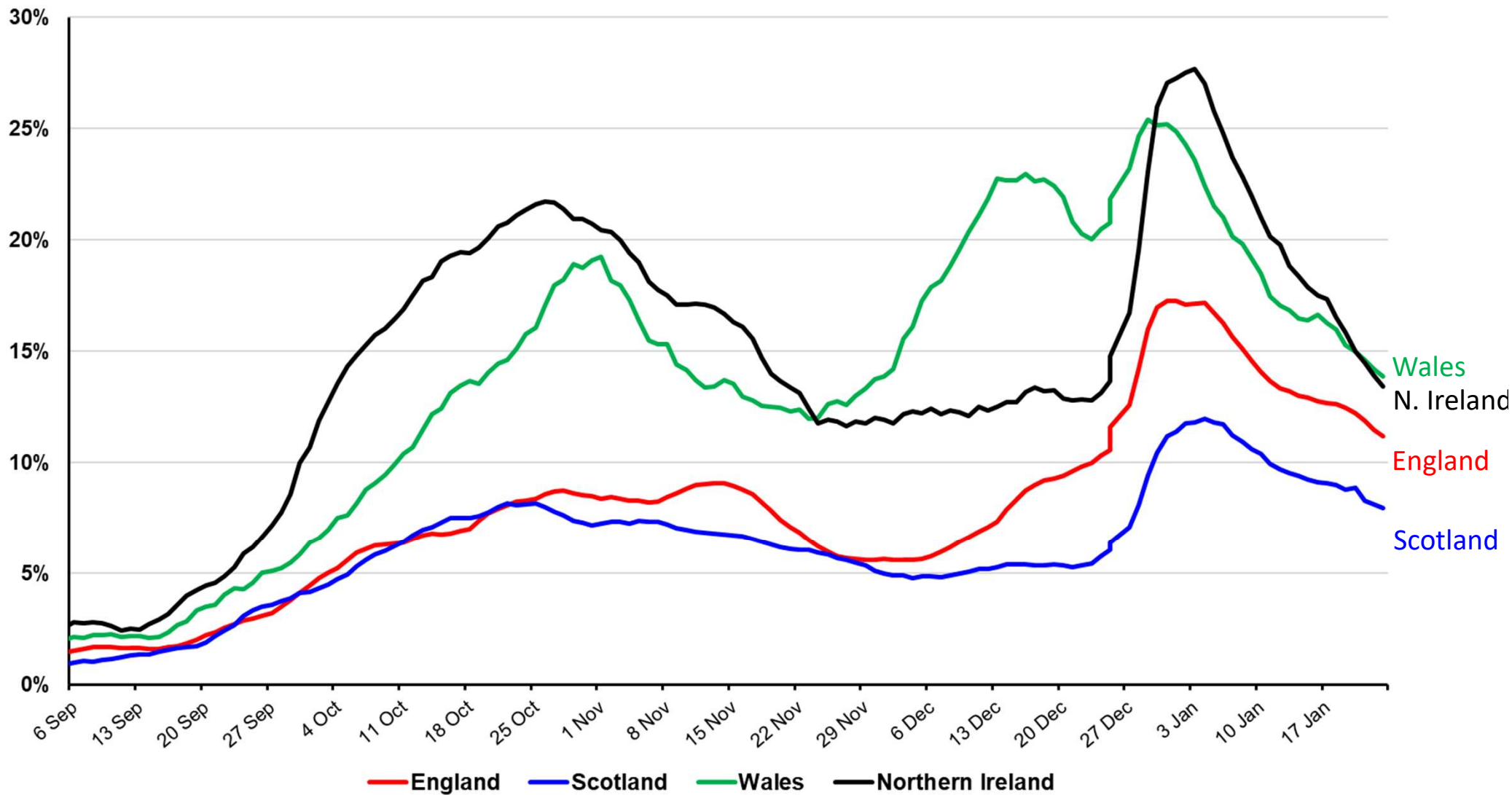


Data from <https://www.gov.uk/government/publications/nhs-test-and-trace-england-statistics-14-january-to-20-january-2021>

Number of new UK confirmed COVID-19 cases by reported date (people who have had a positive test)



Percentage positivity – UK nations – to 23rd Jan



Data from:

Scotland: <https://www.opendata.nhs.scot/dataset/covid-19-in-Scotland>

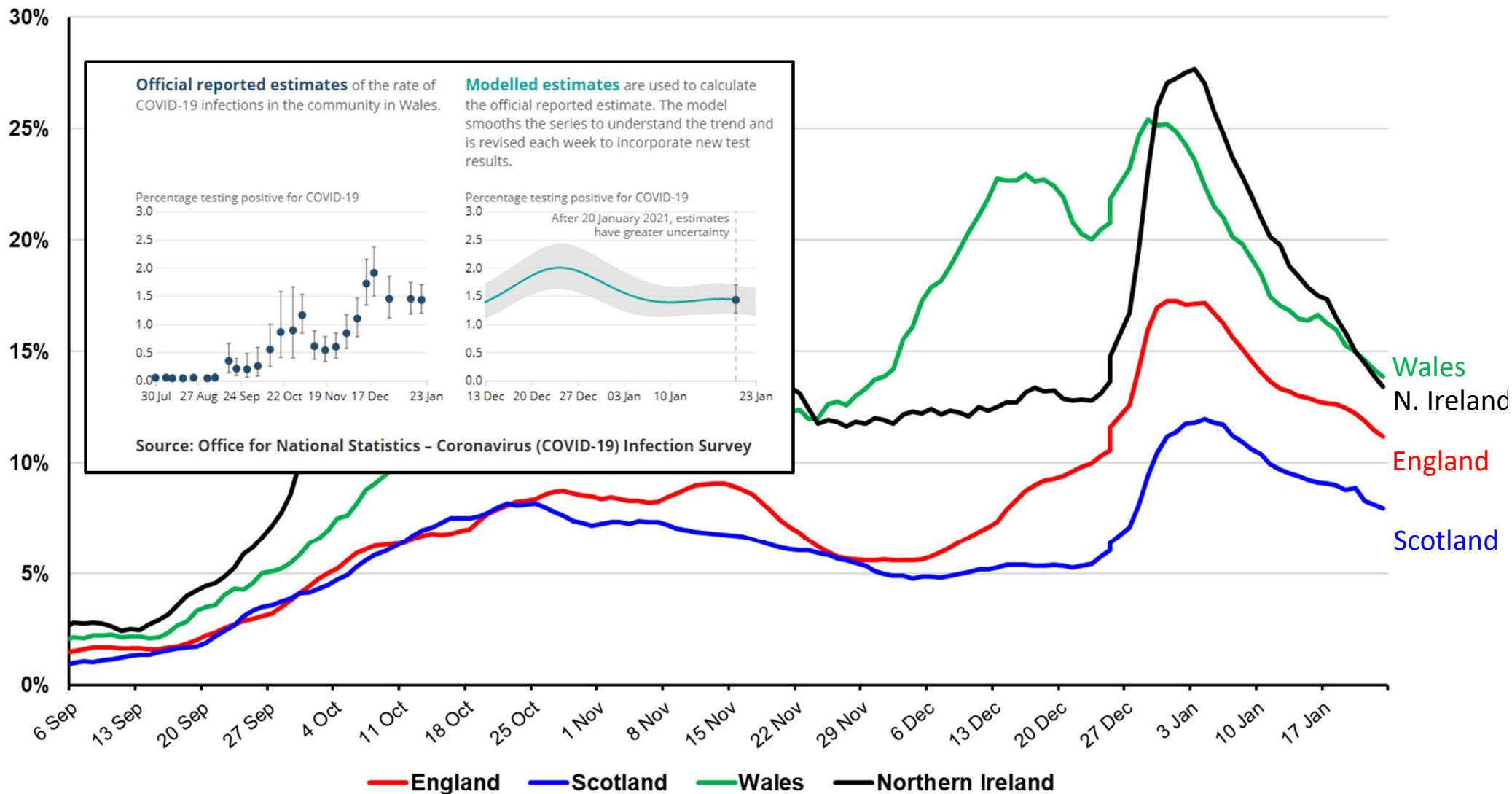
Wales: <https://public.tableau.com/profile/public.health.wales.health.protection#!/vizhome/RapidCOVID-19virology-Public/Headlinesummary>

NI: <https://www.health-ni.gov.uk/publications/daily-dashboard-updates-covid-19-november-2020>

England: <https://coronavirus.data.gov.uk>

Visualisation courtesy of Bob Hawkins

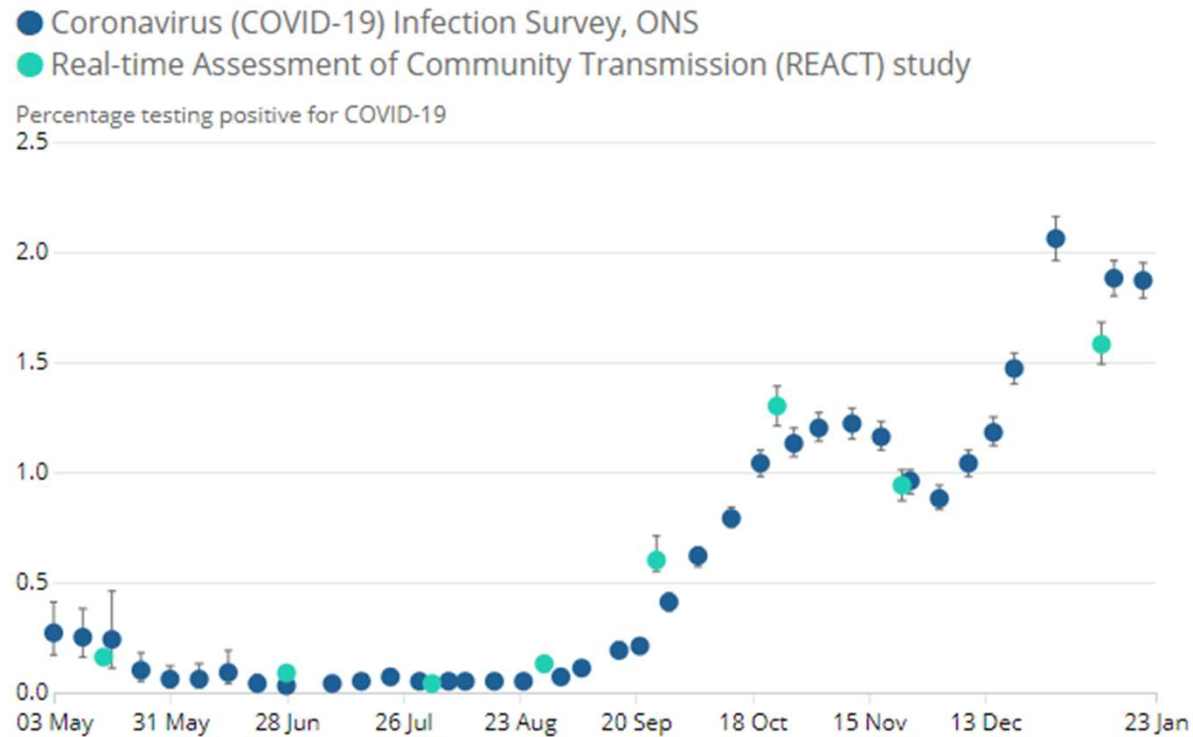
Percentage positivity – UK nations – to 23rd Jan



Data from:
 Scotland: <https://www.opendata.nhs.scot/dataset/covid-19-in-Scotland>
 Wales: <https://public.tableau.com/profile/public.health.wales.health.protection#!/vizhome/RapidCOVID-19virology-Public/Headlinesummary>
 NI: <https://www.health-ni.gov.uk/publications/daily-dashboard-updates-covid-19-november-2020>
 England: <https://coronavirus.data.gov.uk>
 Visualisation courtesy of Bob Hawkins

Proportion of people with Covid – England – to 23rd Jan

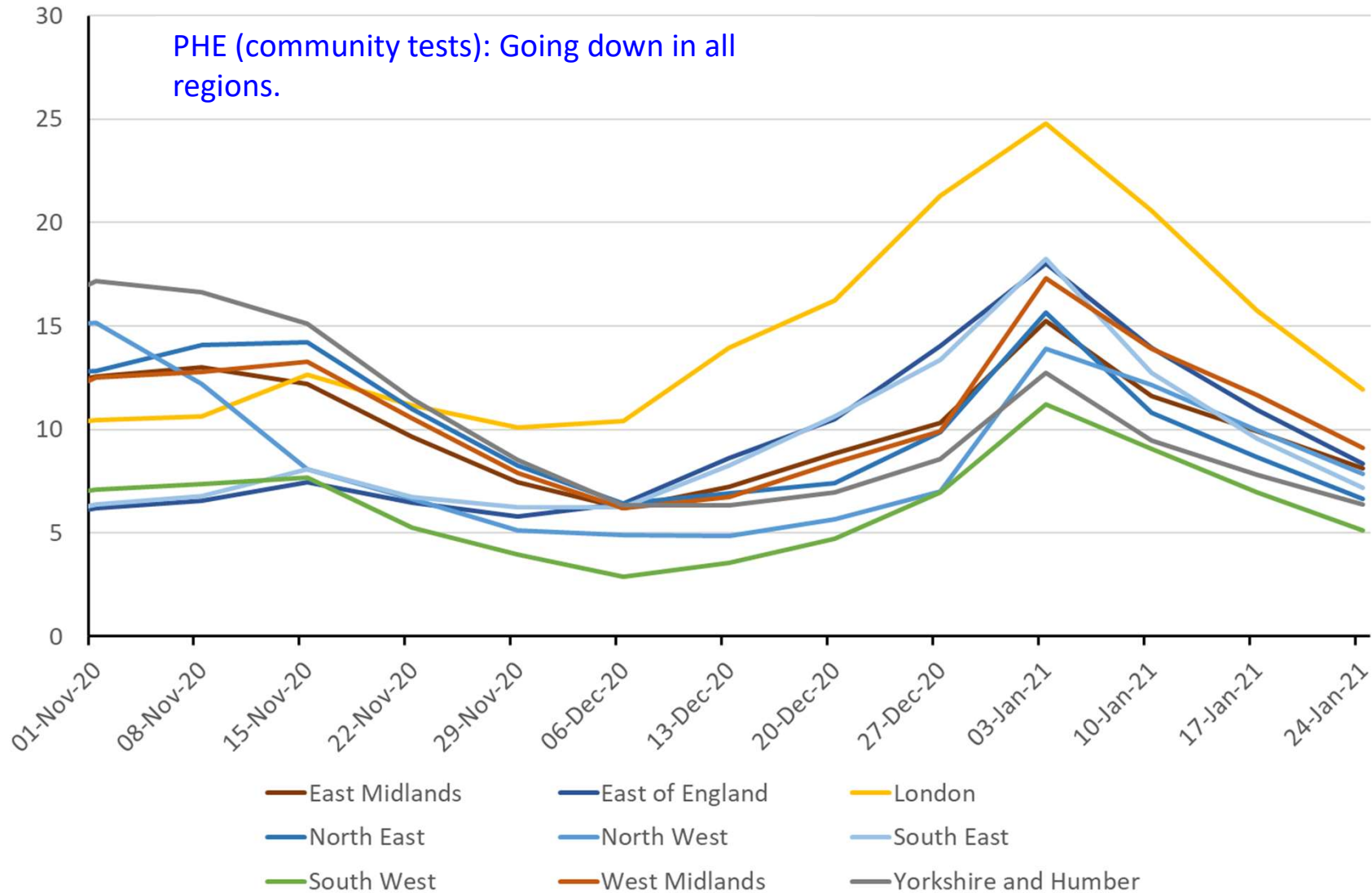
Estimated percentage of community population testing positive for COVID-19, 3 May 2020 to 23 January 2021, England



Source: Office for National Statistics – Coronavirus (COVID-19) Infection Survey and Real-time Assessment of Community Transmission (REACT) study

Positivity rate by region to 24th January (PHE)

% of people tested who are positive



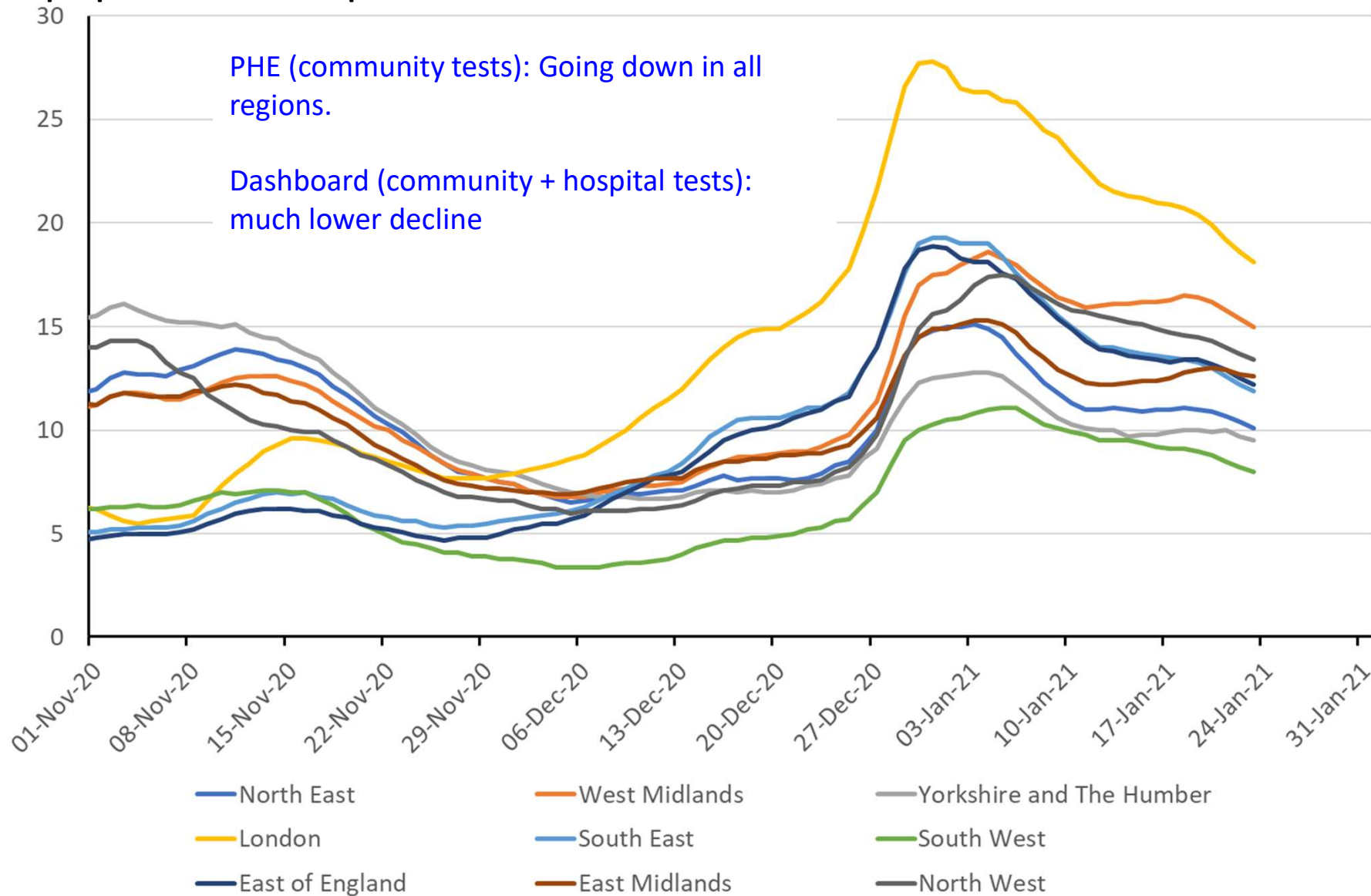
Graph from <https://www.gov.uk/government/statistics/national-flu-and-covid-19-surveillance-reports>

Dashboard: <https://api.coronavirus.data.gov.uk/v2/data?areaType=region&metric=newCasesBySpecimenDate&metric=uniqueCasePositivityBySpecimenDateRollingSum&format=csv>

REACT: https://spiral.imperial.ac.uk/bitstream/10044/1/85703/10/react1_r8_full_preprint_1.1.pdf

Positivity rate by region to 23rd January (Govt Dashboard)

% of people tested who are positive



Proportion of people with Covid by region to 23rd January (ONS)

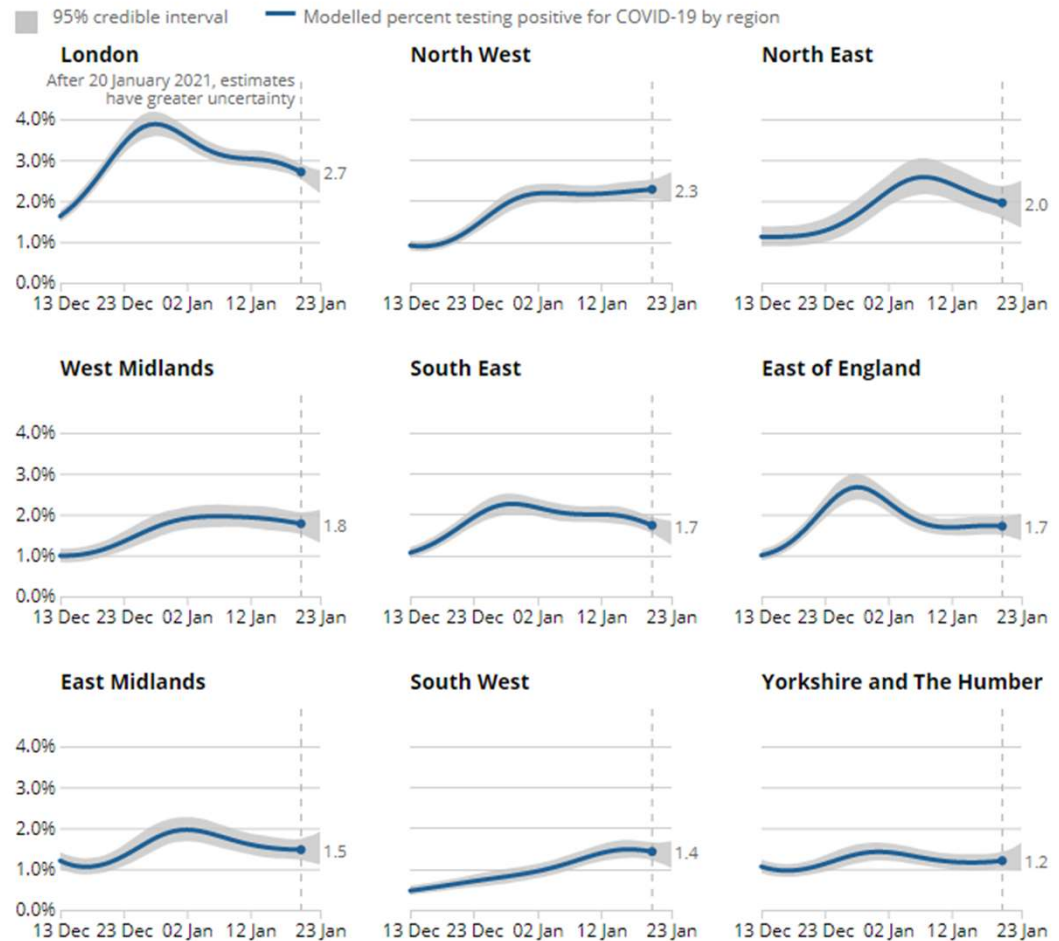
PHE (community tests): Going down in all regions.

Dashboard (community + hospital tests): much lower decline

REACT: Only going down in SW, SE, NW

ONS: Only going down in London, NE

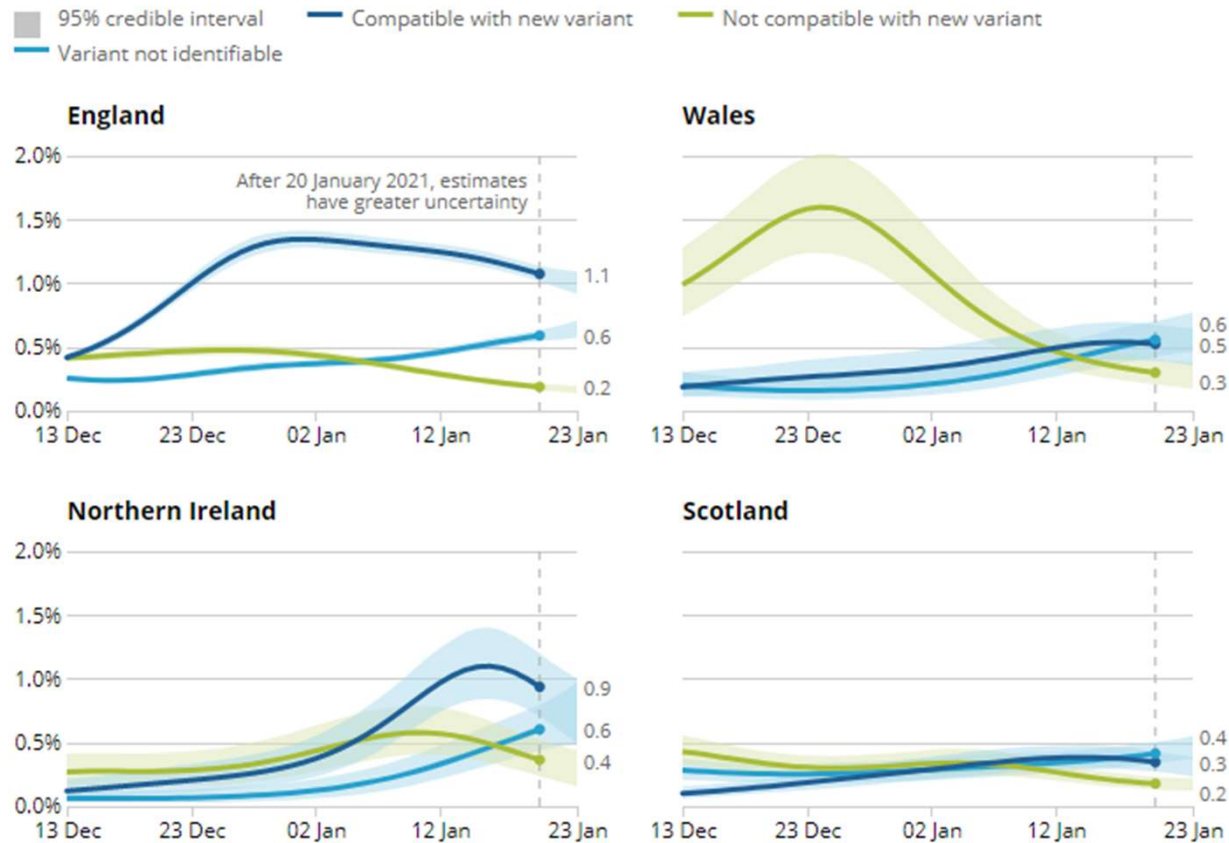
Estimated percentage of the population testing positive for the coronavirus (COVID-19) on nose and throat swabs, daily, by region since 13 December 2020, England



Source: Office for National Statistics – Coronavirus (COVID-19) Infection Survey

ONS infection survey and age (to 23rd January)

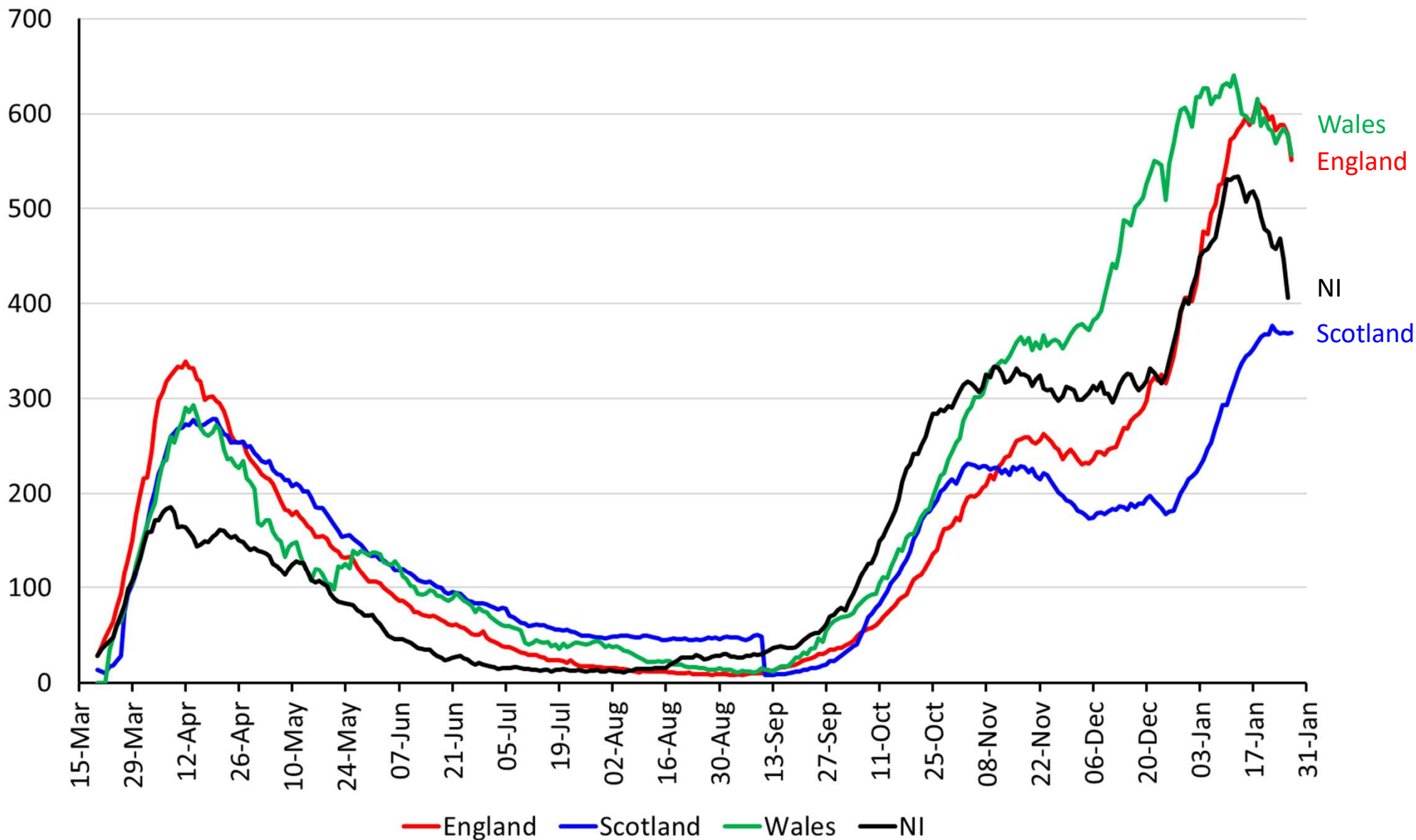
Modelled percentage of cases that are compatible with the new variant, not compatible with the new variant and where the virus was too low for the variant to be identifiable based on nose and throat swabs, daily, by country since 13 December 2020, UK



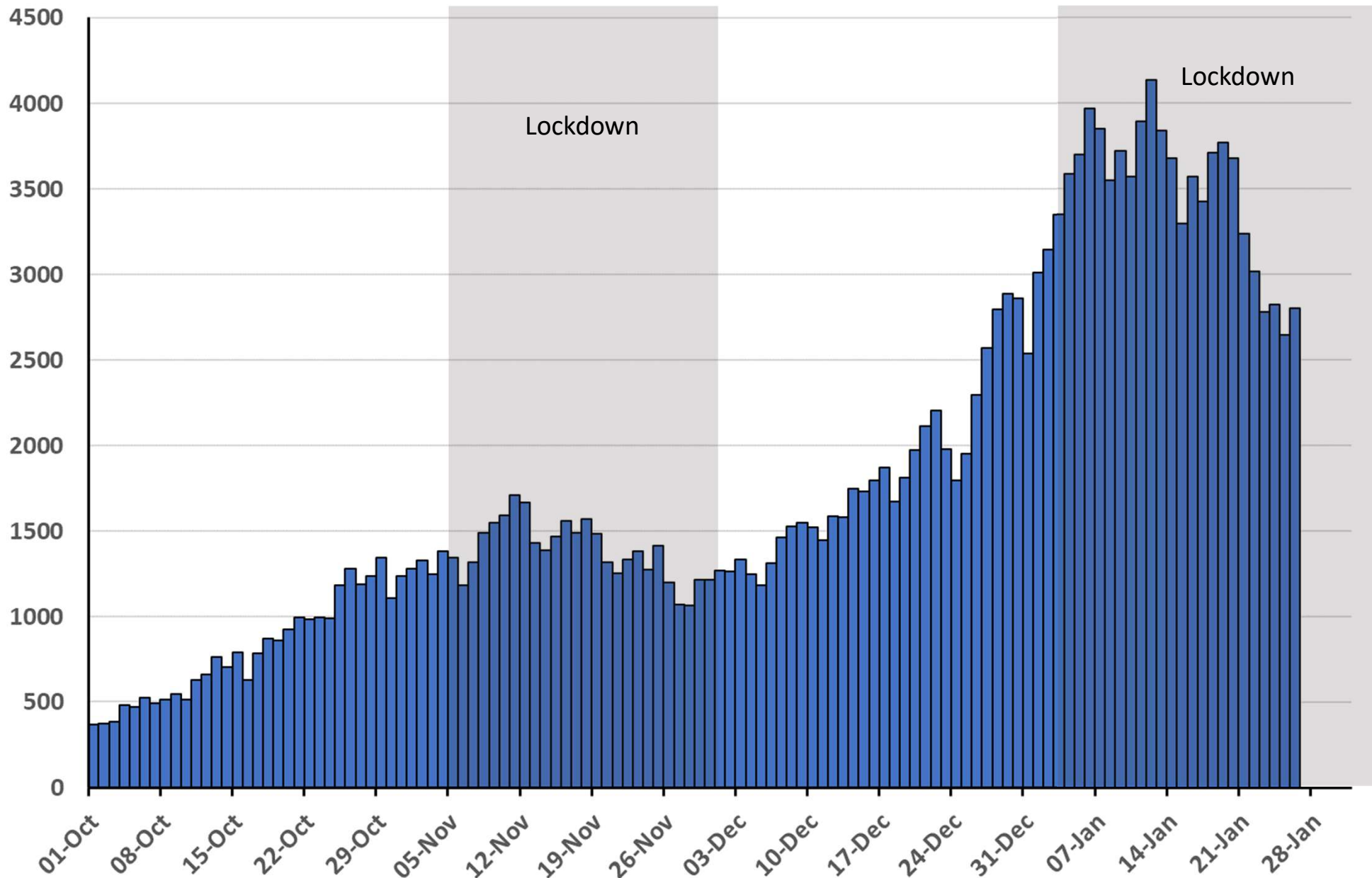
Source: Office for National Statistics – Coronavirus (COVID-19) Infection Survey

Hospitalisations

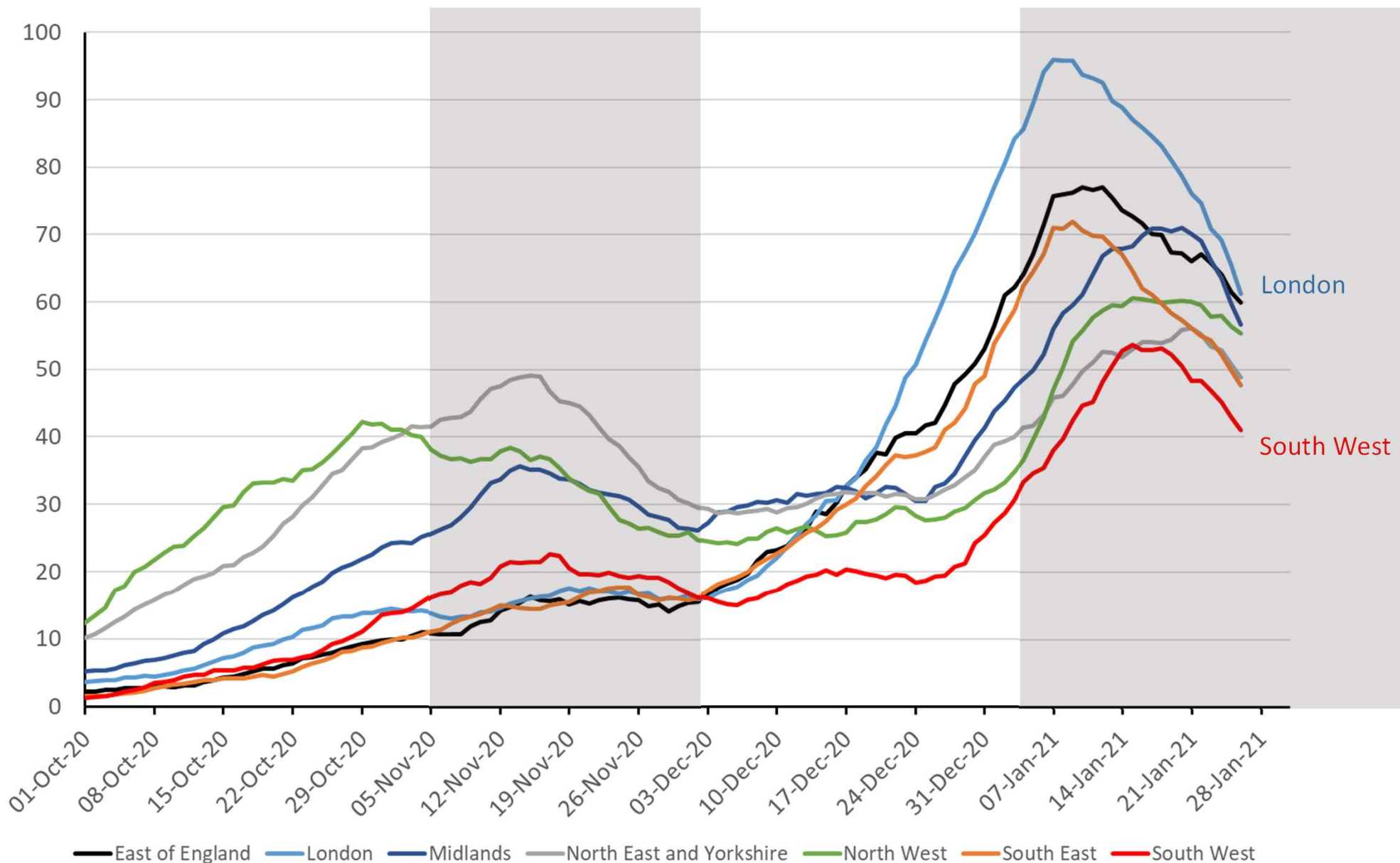
Number of people in hospital per million people – UK nations



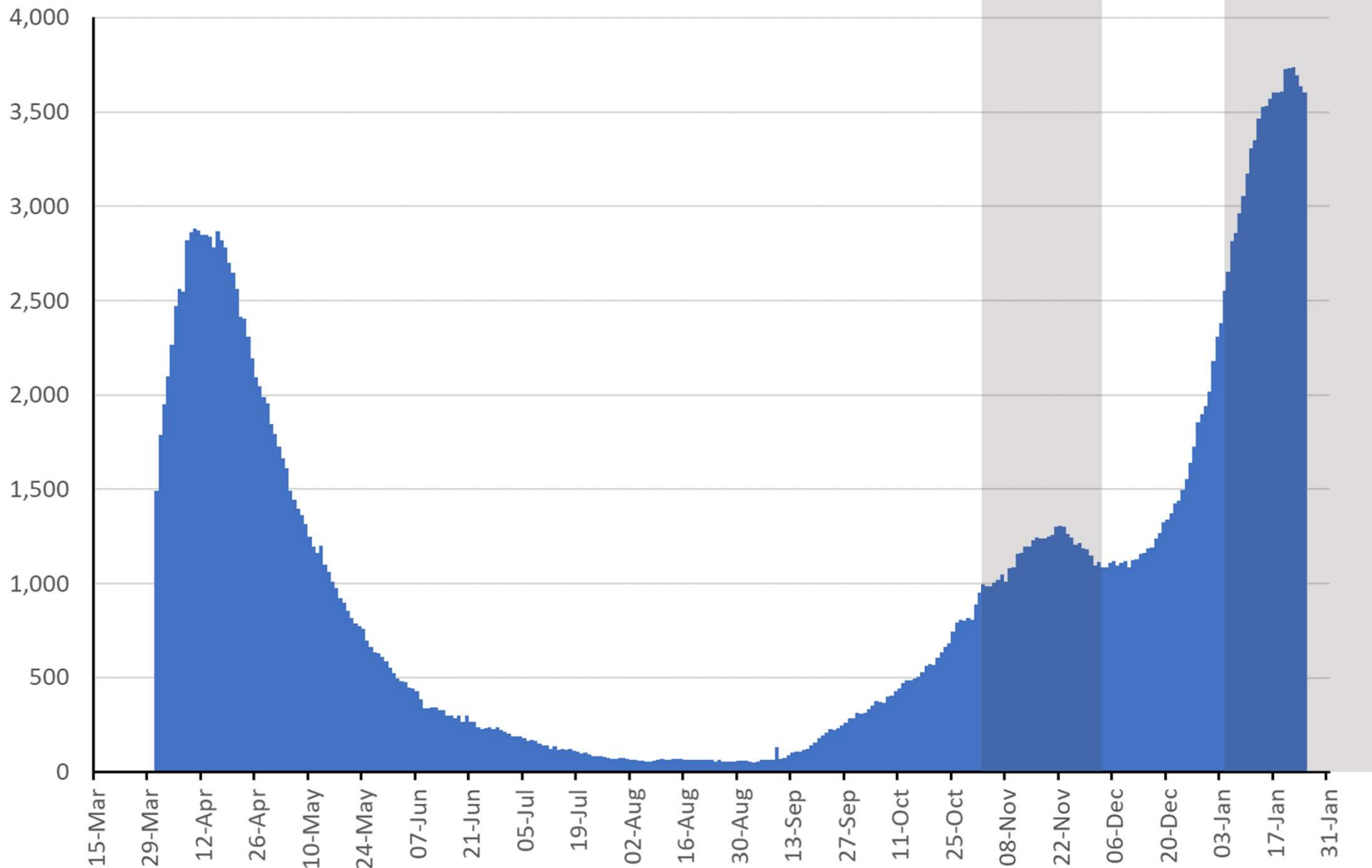
Number of new hospital admissions with COVID-19 per day in England to 26th Jan



7-day average of daily number of new hospital admissions with COVID-19 per day / million people across different regions in England to 26th Jan

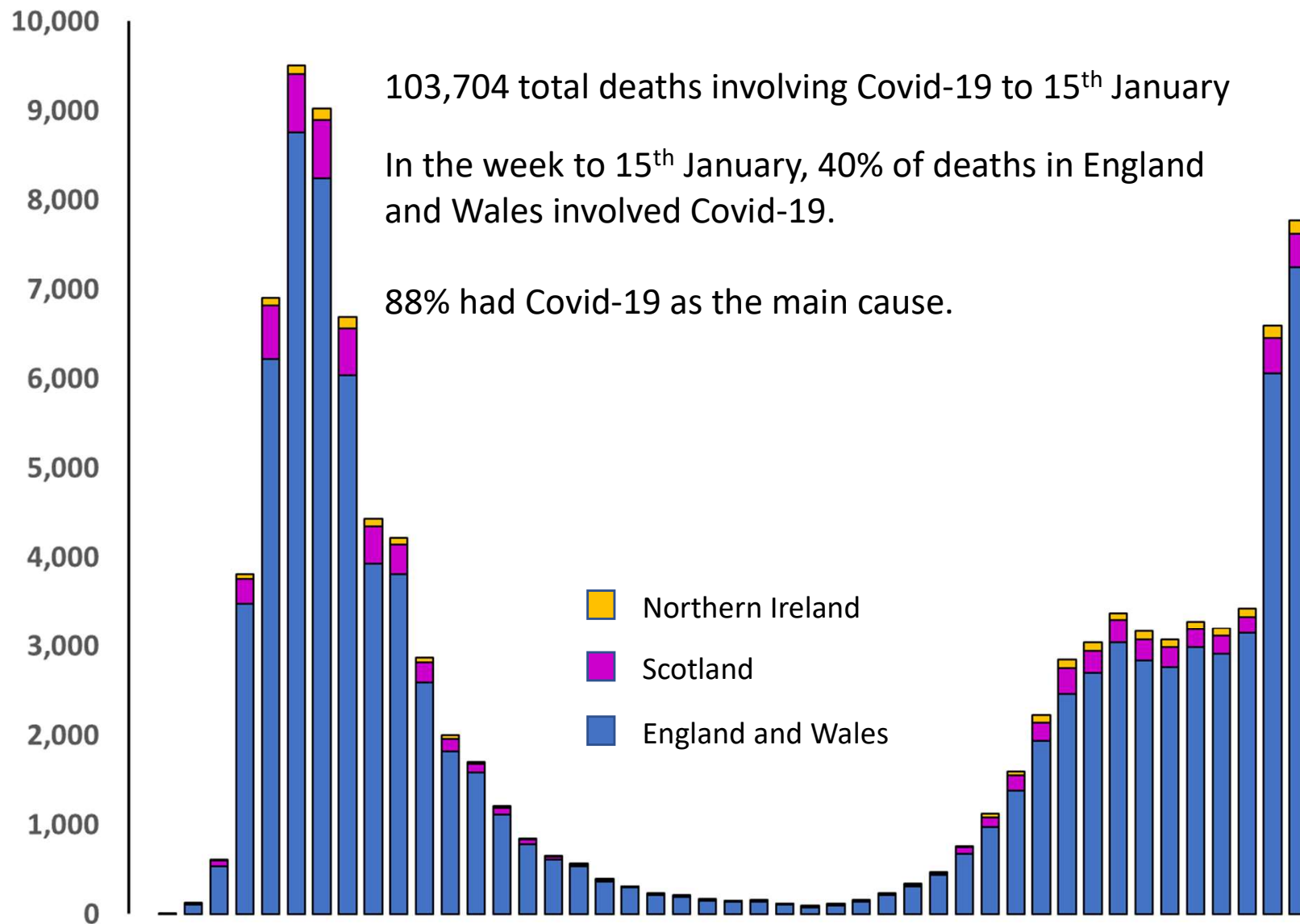


Number of people in intensive care beds with COVID-19 per day in England to 27th Jan



Deaths

Number of new UK deaths from COVID-19 registered per week, to 15th January



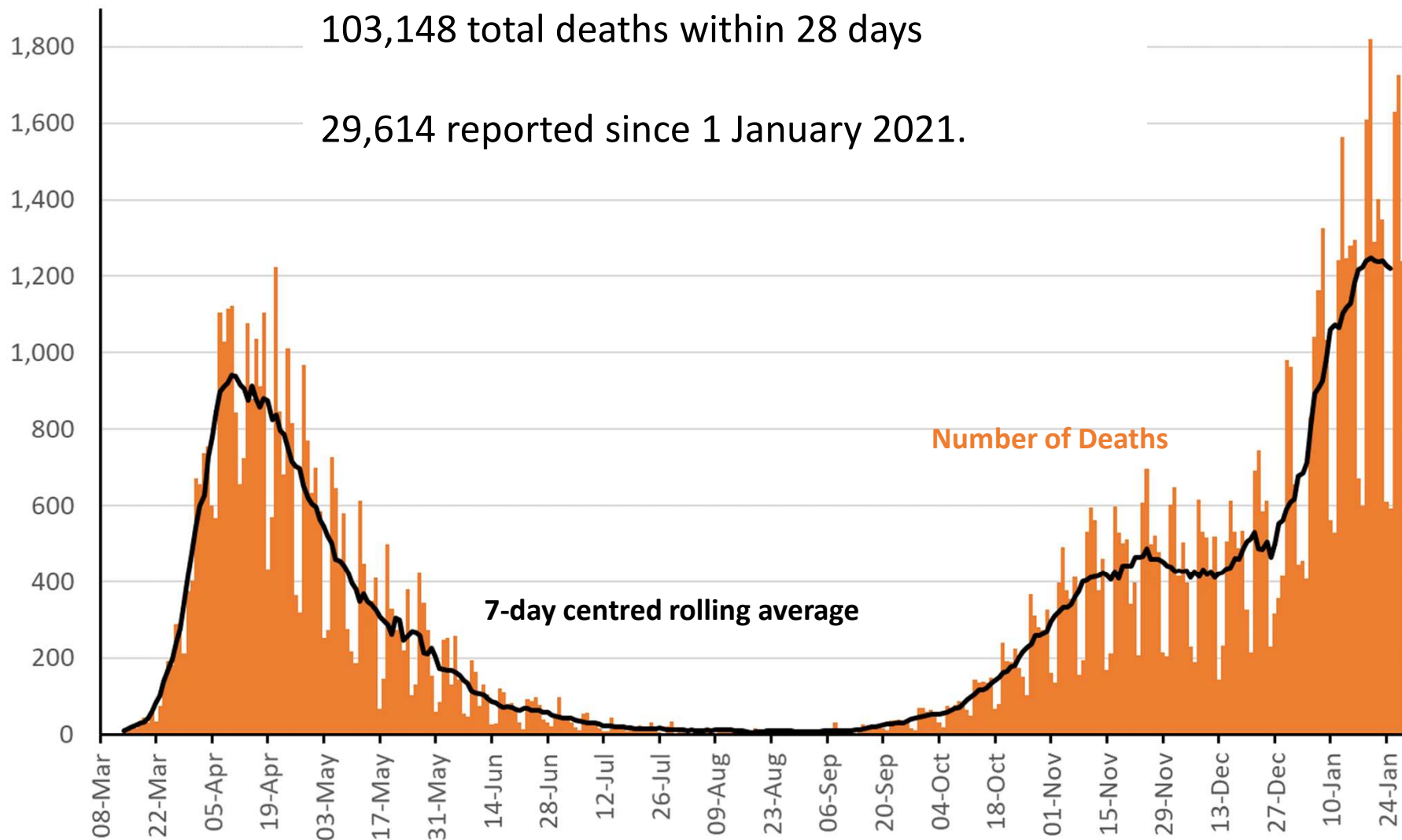
Data from :

England and Wales: www.ons.gov.uk/peoplepopulationandcommunity/birthsdeathsandmarriages/deaths/bulletins/deathsregisteredweeklyinenglandandwalesprovisional/latest

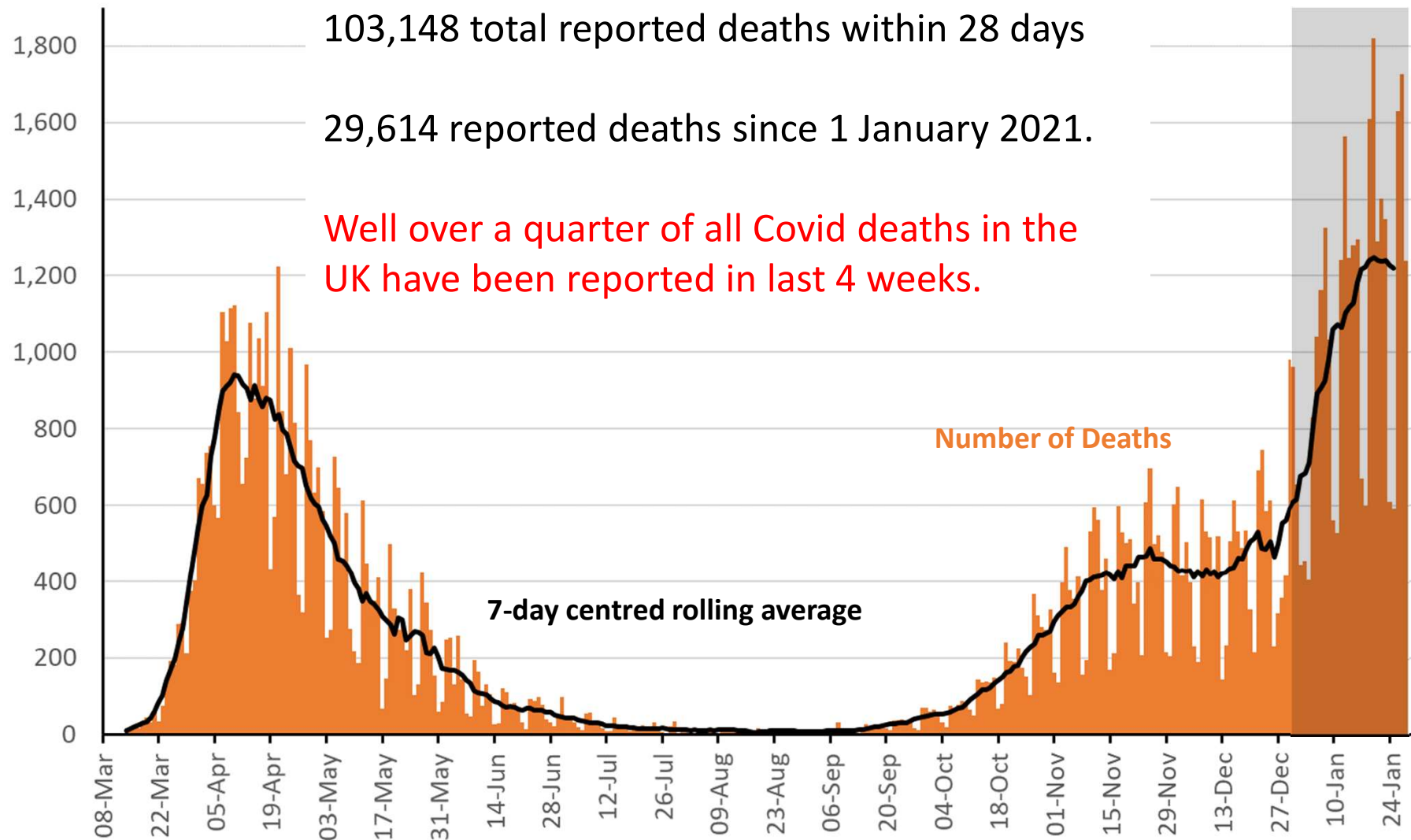
Scotland: <https://data.gov.scot/coronavirus-covid-19/detail.html>

Northern Ireland: www.nisra.gov.uk/publications/weekly-deaths

Number of deaths within 28 days of +ve COVID test reported per day across the UK to 28th Jan



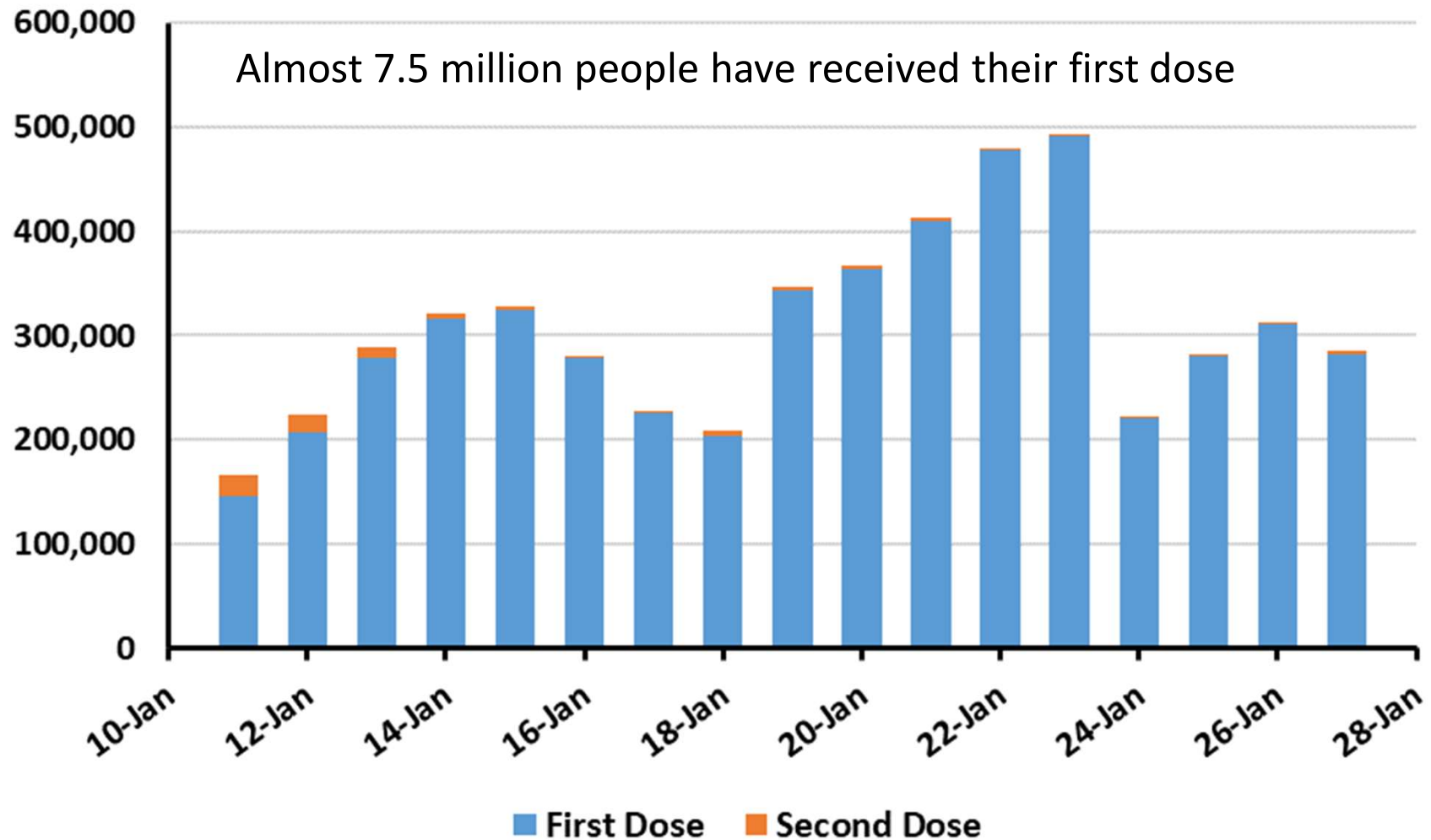
Number of deaths within 28 days of +ve COVID test reported per day across the UK to 28th Jan



Data from <https://coronavirus.data.gov.uk/>

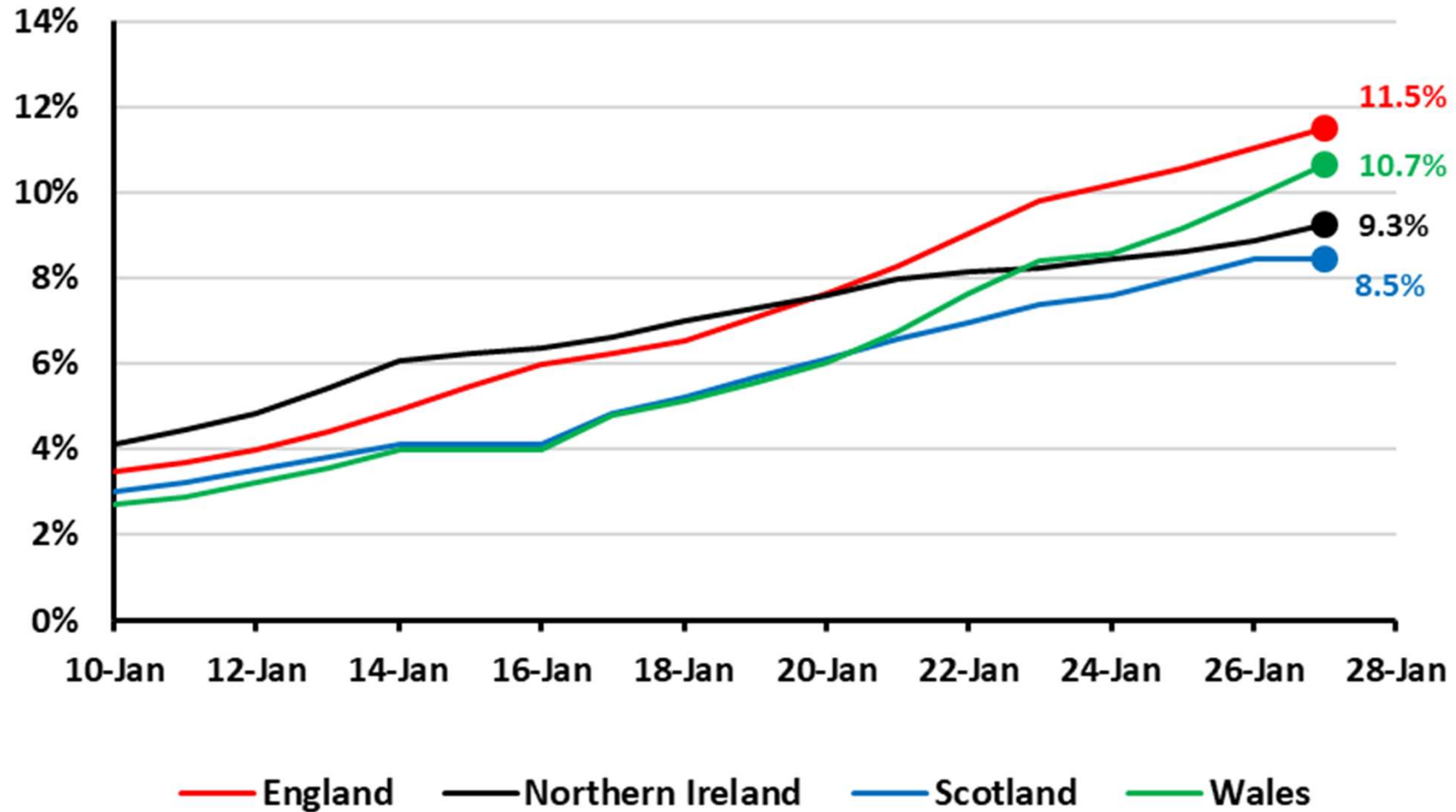
Vaccination data

Number of people vaccinated per day in the UK



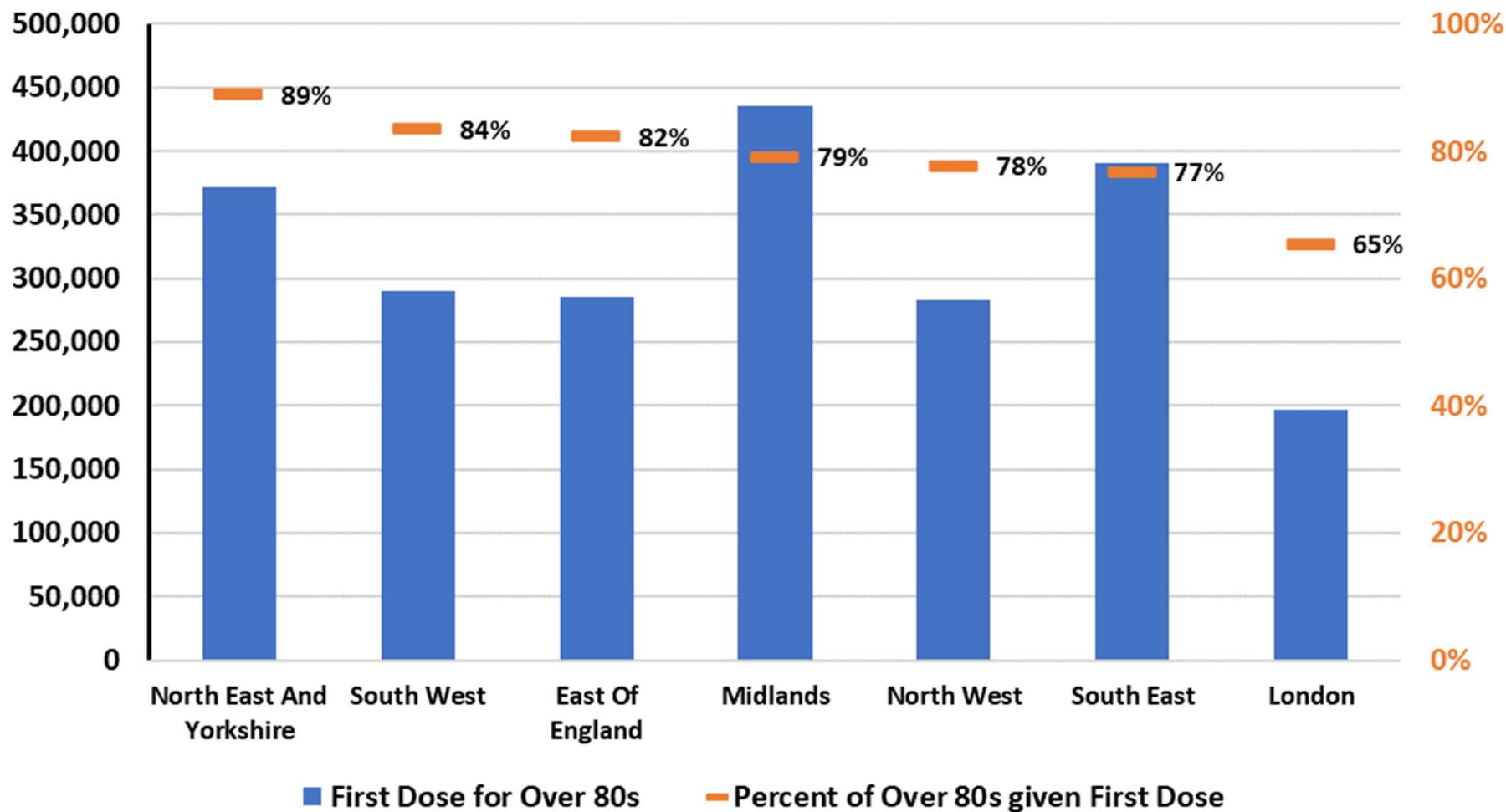
Data from <https://coronavirus.data.gov.uk/>
 Thanks to Bob Hawkins for the chart

Population coverage by nation over time



Data from <https://coronavirus.data.gov.uk/>
 Thanks to Bob Hawkins for the chart

Population coverage over 80s, English regions to 24th January

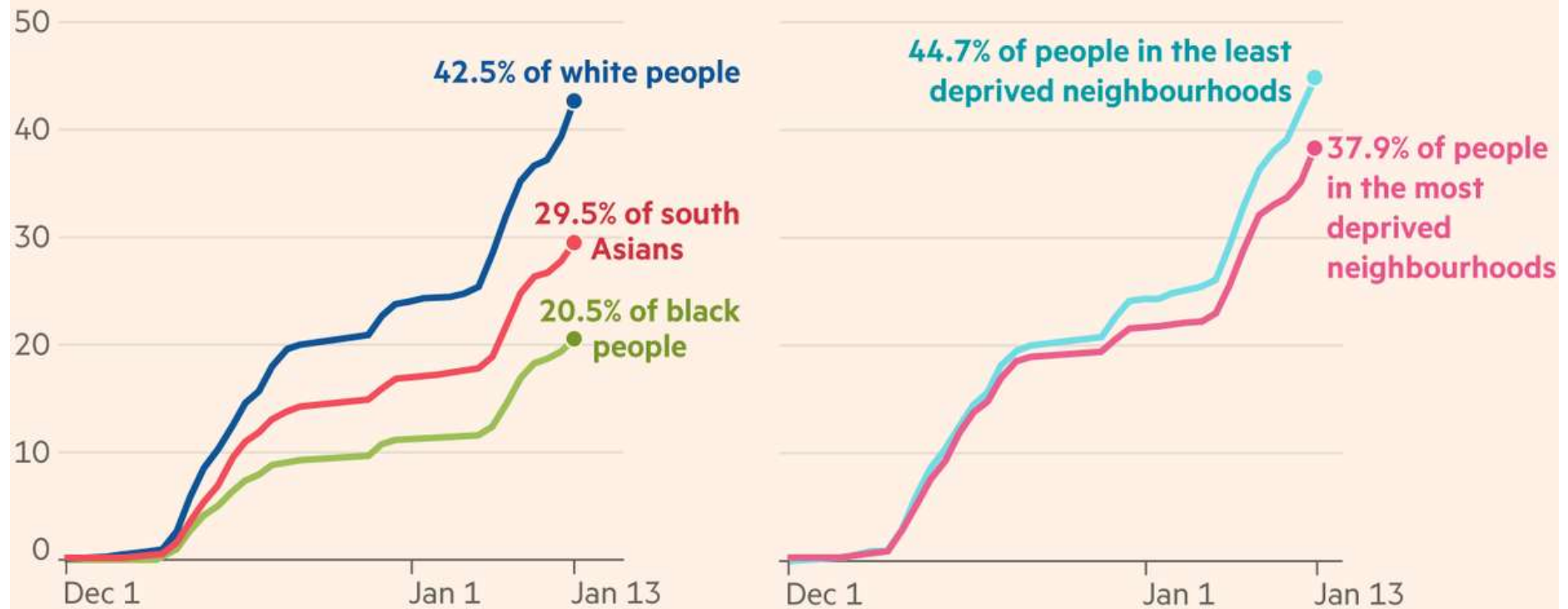


Data from <https://www.england.nhs.uk/statistics/statistical-work-areas/covid-19-vaccinations/>
 Thanks to Bob Hawkins for the chart

Vaccination rates to 15th January (Open Safely study)

Vaccination rates in England are lower among non-white people and those in deprived areas

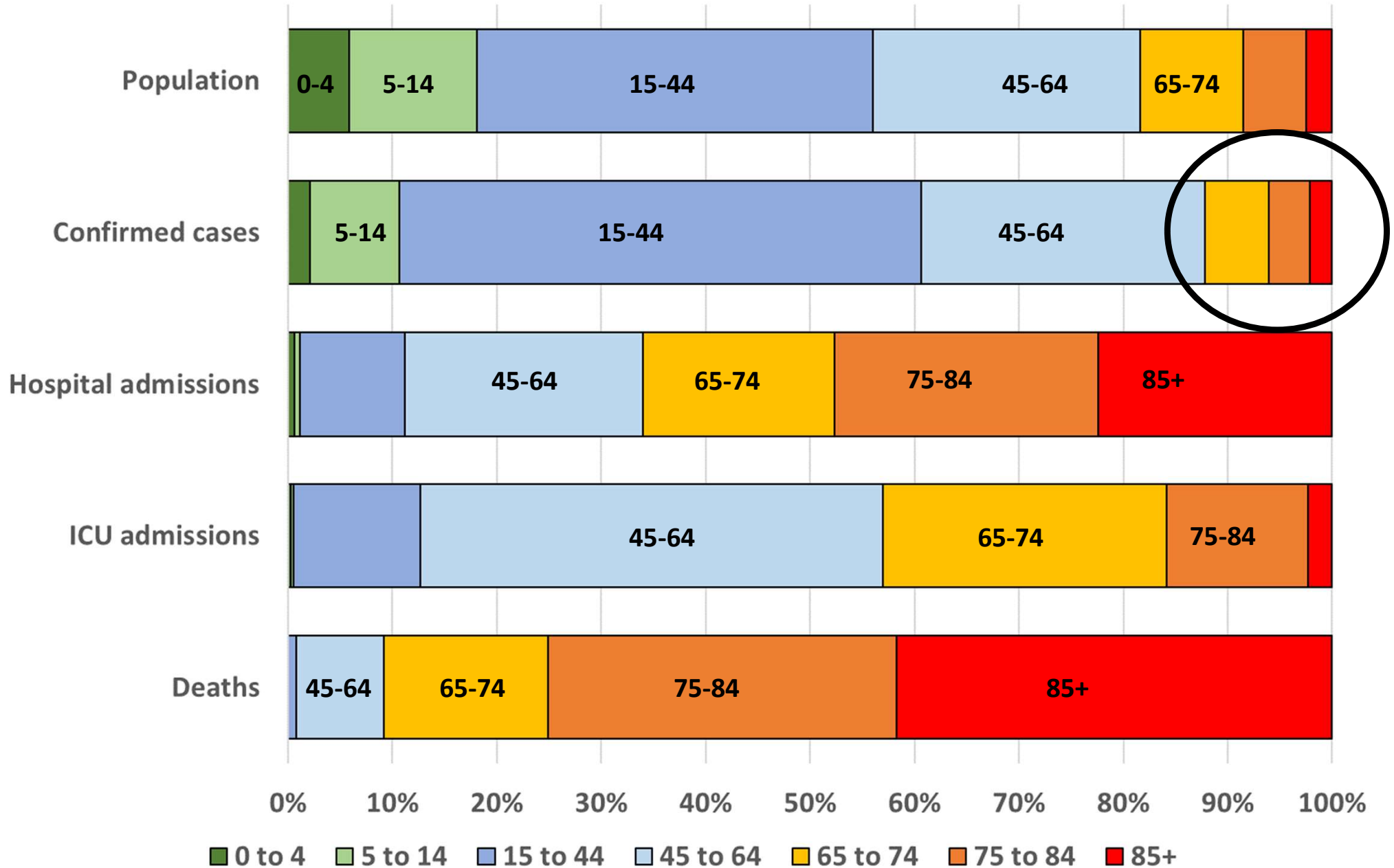
Percentage of people aged 80+ who have received at least one dose, by demographic characteristic



Sources: medRxiv/OpenSafely; University of Oxford, London School of Hygiene and Tropical Medicine; TPP

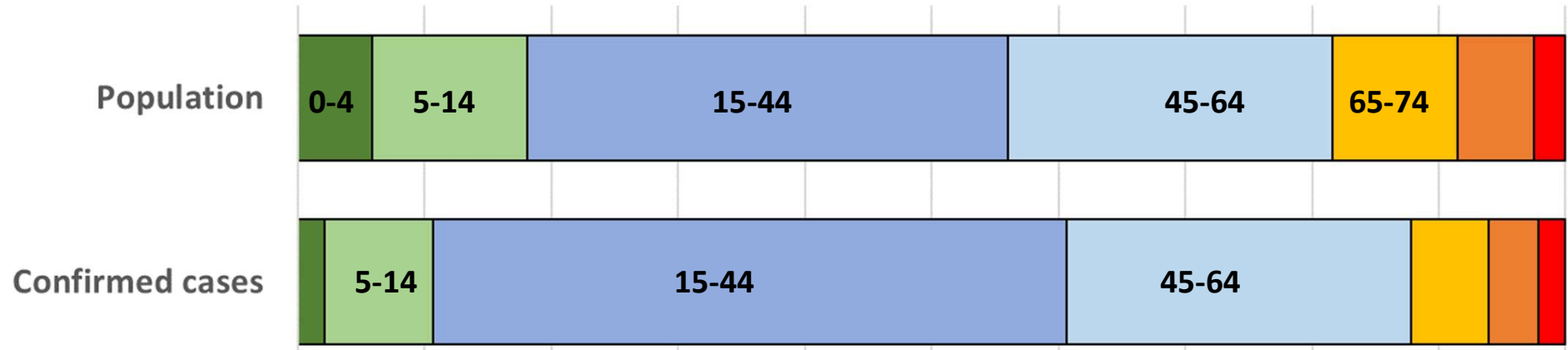
© FT

How age plays a role in infections, hospitalisations, deaths and vaccinations (using data since October)



Data from <https://www.gov.uk/government/statistics/national-flu-and-covid-19-surveillance-reports>
<https://www.ons.gov.uk/peoplepopulationandcommunity/birthsdeathsandmarriages/deaths/bulletins/deathsregisteredweeklyinenglandandwalesprovisional/latest>

How age plays a role in infections, hospitalisations, deaths and vaccinations (using data since October)



Hospital ad

Since March, 3.8 million confirmed cases in the UK.

ICU ad

From the number of deaths, likely that at least 10 million people have had Covid.

There will be hundreds of thousands of people in the UK living with long Covid.



Summary

Case numbers and hospital admissions falling everywhere.

Deaths look to have just peaked

ONS and REACT paint a slightly different picture – so we know things are getting better, but not quite yet how quickly.

Over 1 million people had had their 1st dose by 3rd Jan. Now over 3 weeks out. Are they tracking outcomes? Will they make them public? And by age?

High infection rates and the high burden of Covid we've experience in the UK means that hundreds of thousands of people are living with long Covid now and are at risk from developing it in the future. Death & hospitalisation are not the only metrics!