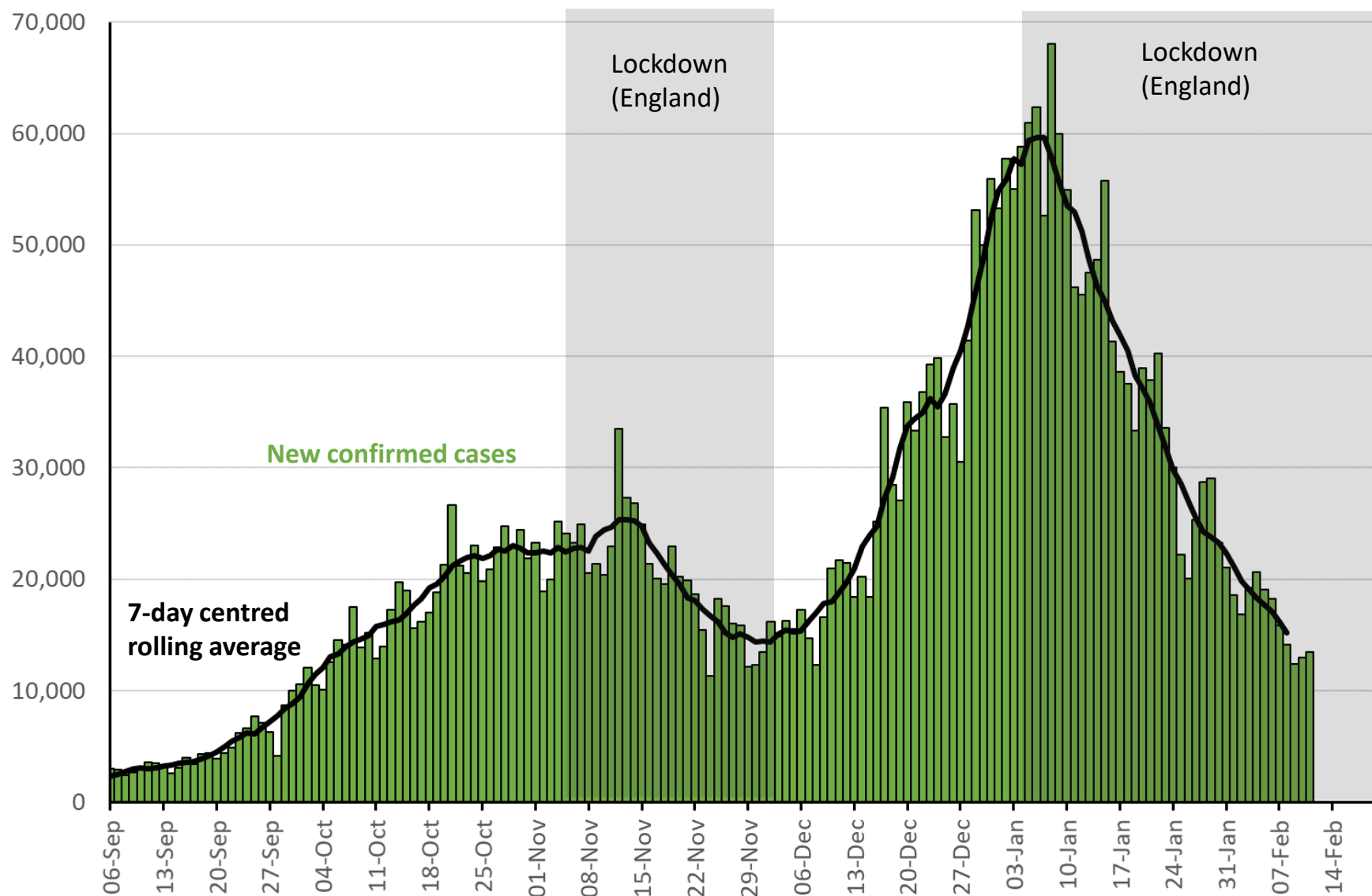


Latest numbers on COVID-19 in the UK – 12th February 2021

1. Cases
2. Hospitalisations
3. Deaths
4. Vaccinations
5. Things to think about coming out of lockdown

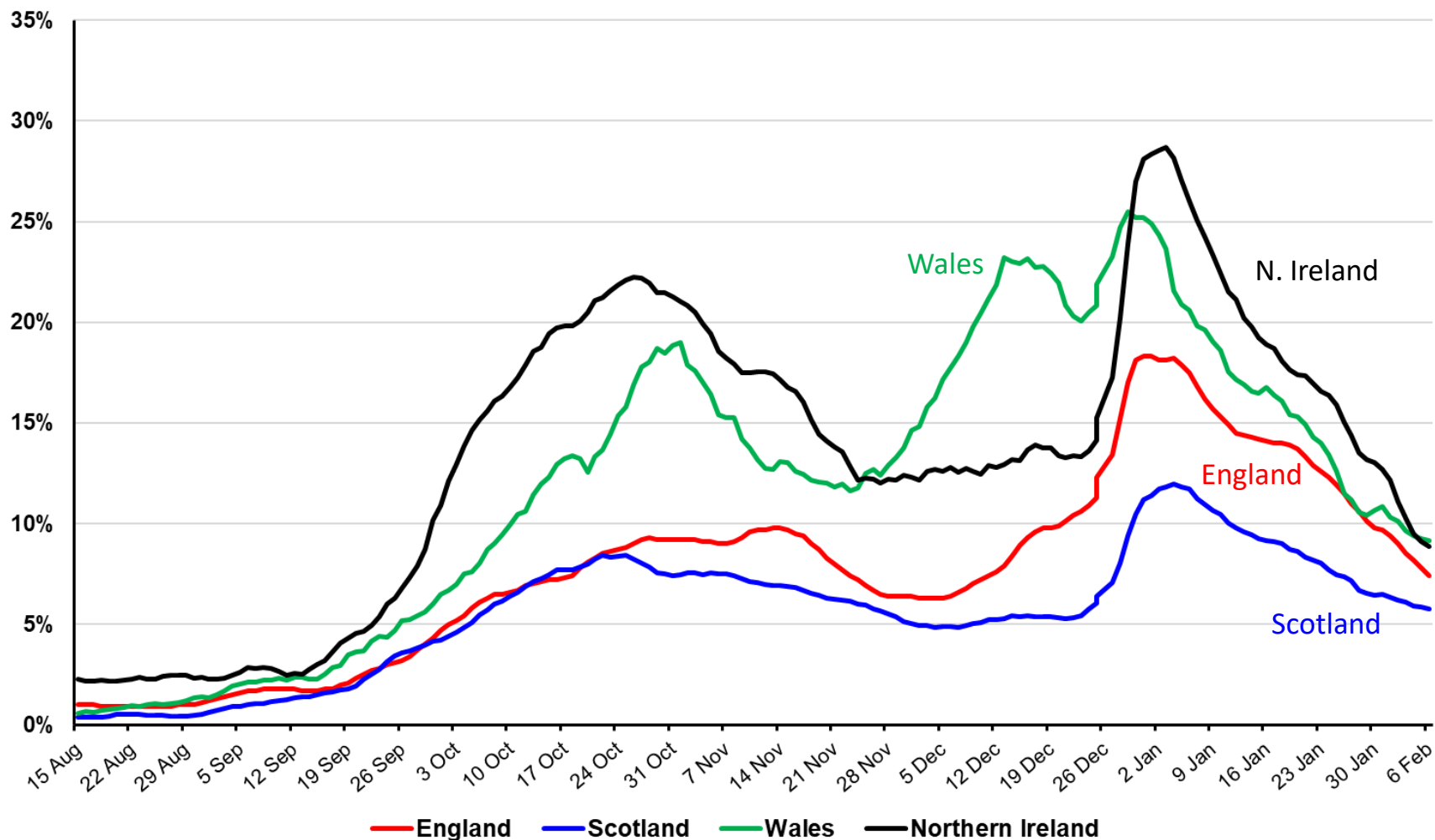
Cases

Number of new UK confirmed COVID-19 cases by reported date (people who have had a positive test)



Positivity rates – UK nations – by date of test to 6th February

% of people tested who are positive



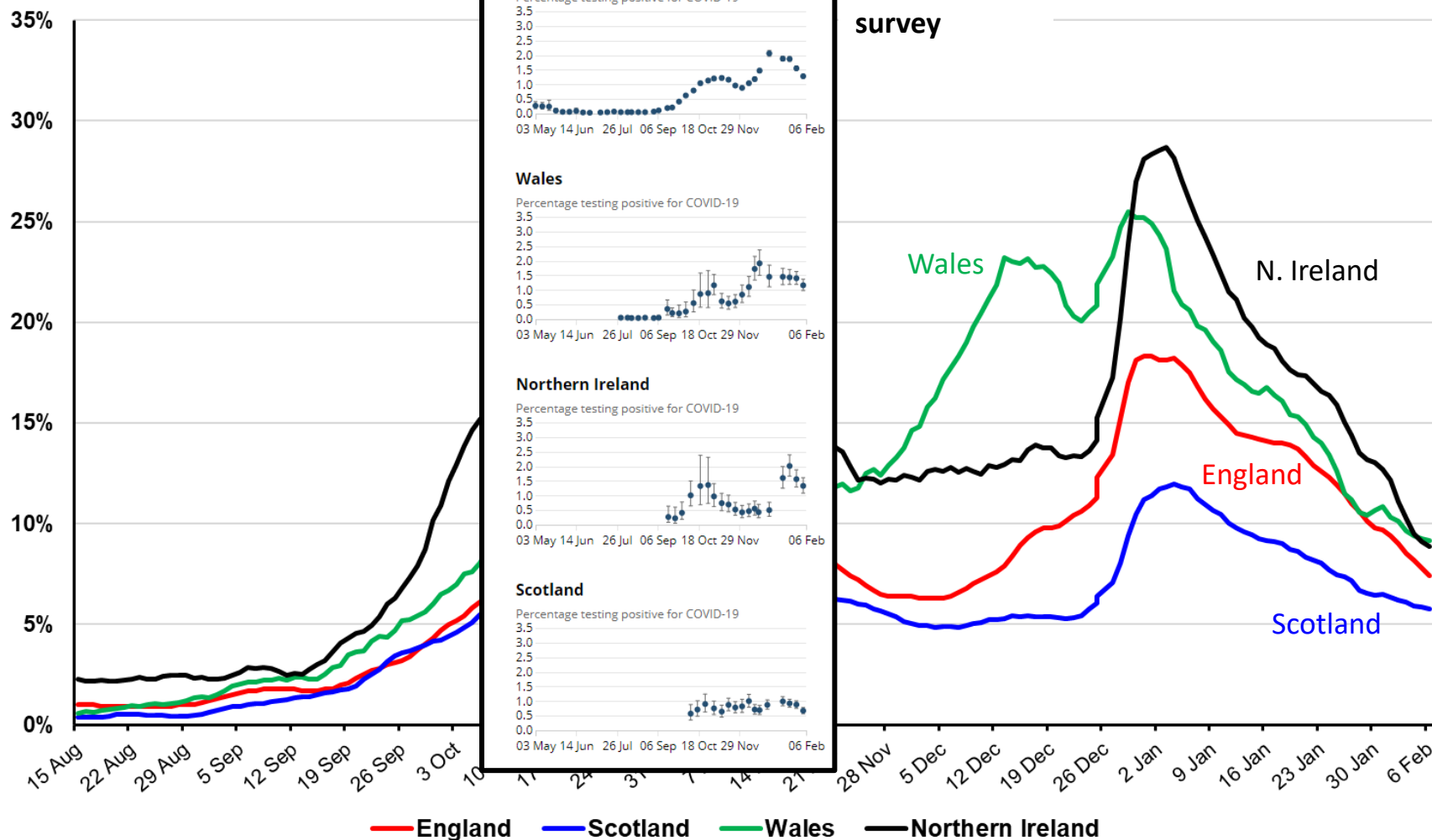
Data from:

Scotland: <https://www.opendata.nhs.scot/dataset/covid-19-in-Scotland>Wales: <https://public.tableau.com/profile/public.health.wales.health.protection#!/vizhome/RapidCOVID-19virology-Public/Headlinesummary>NI: <https://www.health-ni.gov.uk/publications/daily-dashboard-updates-covid-19-november-2020>England: <https://coronavirus.data.gov.uk>

Visualisation courtesy of Bob Hawkins

Positivity rates – UK nations – by date of test to 6th February

% of people tested who are positive



Data from:

Scotland: <https://www.opendata.nhs.scot/dataset/covid-19-in-Scotland>

Wales: <https://public.tableau.com/profile/public.health.wales.health.protection#!/vizhome/RapidCOVID-19virology-Public/Headlinesummary>

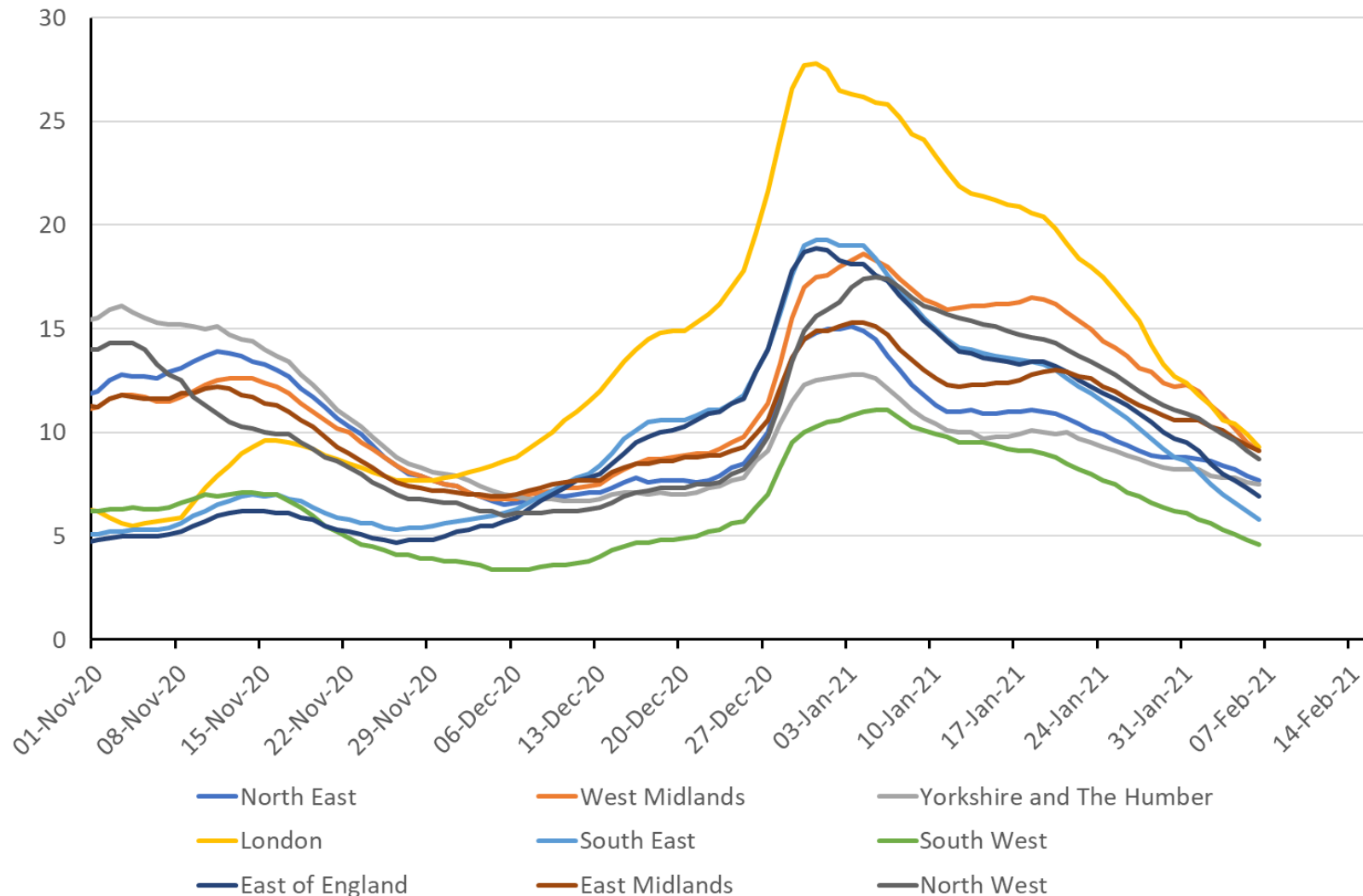
NI: <https://www.health-ni.gov.uk/publications/daily-dashboard-updates-covid-19-november-2020>

England: <https://coronavirus.data.gov.uk> . ONS <https://www.ons.gov.uk/peoplepopulationandcommunity/healthandsocialcare/conditionsanddiseases/bulletins/coronaviruscovid19infectionsurveys/latest>

Visualisation courtesy of Bob Hawkins

Positivity rate by region to 6th February

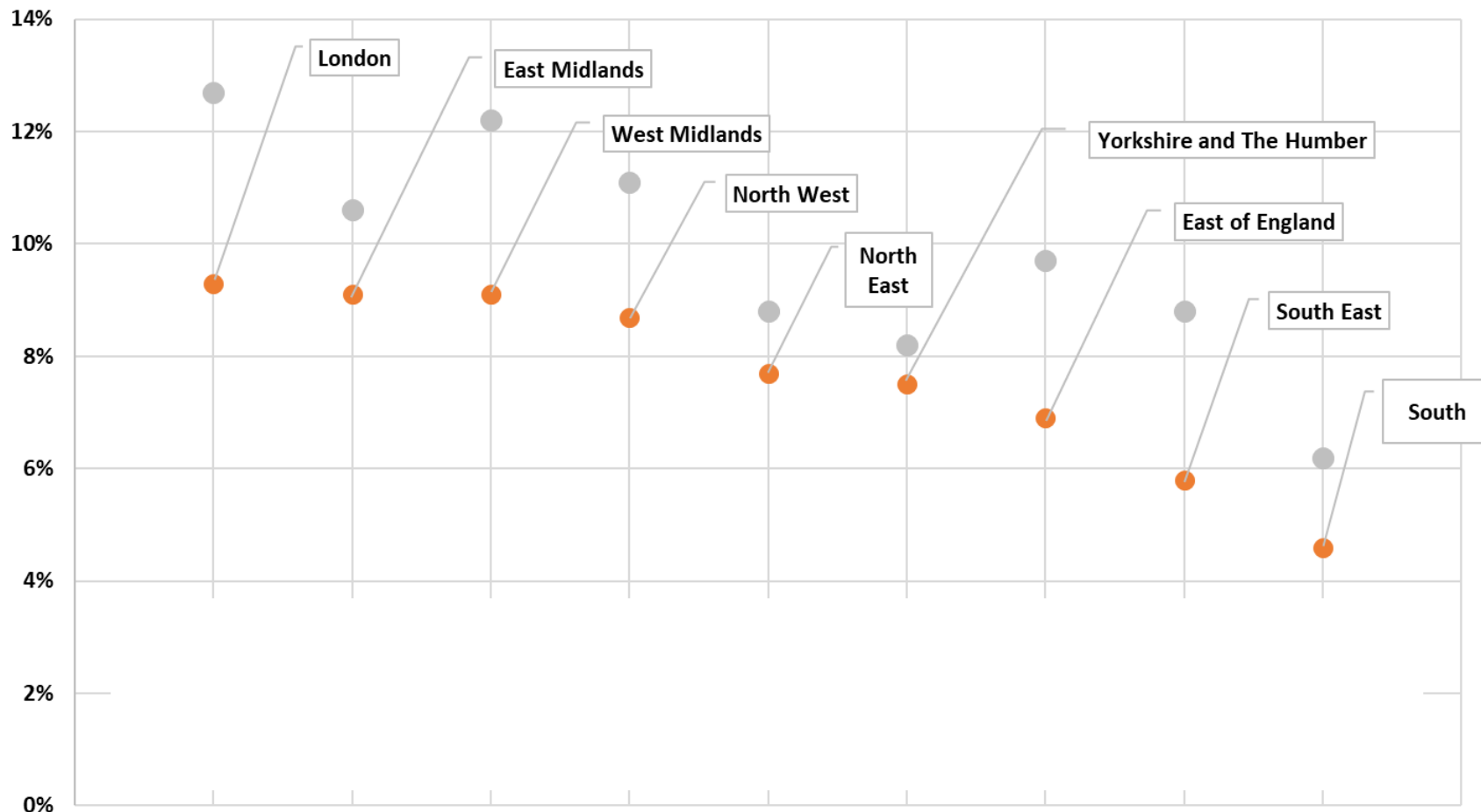
% of people tested who are positive



Positivity Rate for English Regions

Comparison of week ending Feb 6 ● to prior week ● to week ending Sep 1 ◆

% of people tested who are positive



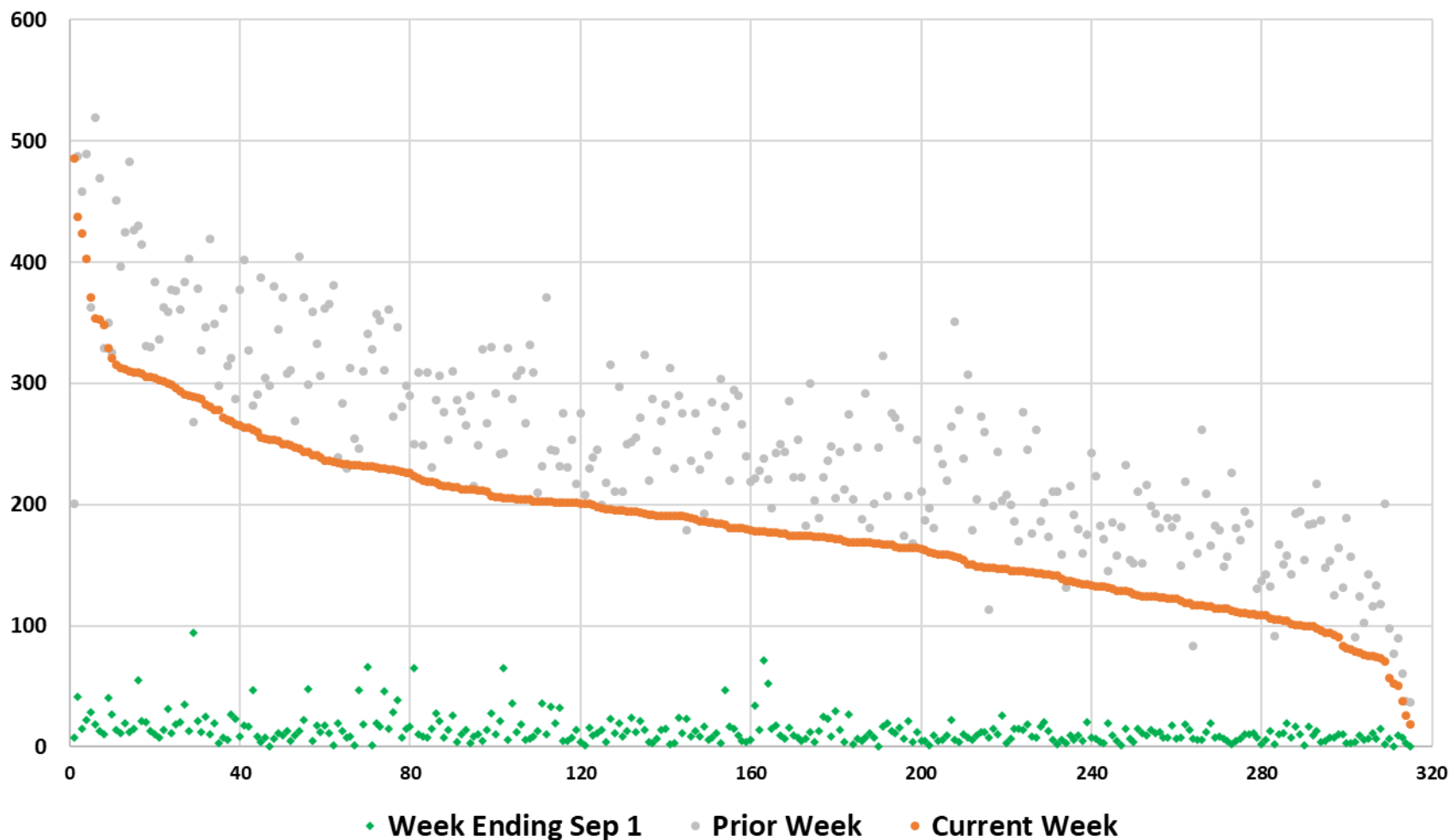
Data: <https://api.coronavirus.data.gov.uk/v2/data?areaType=region&metric=newCasesBySpecimenDate&metric=uniqueCasePositivityBySpecimenDateRollingSum&format=csv>

Thank you to Bob Hawkins for the chart

Cases per 100,000 people per week at local authority level in England

Comparison of week ending Feb 6 ● to prior week ● to week ending Sep 1 ◆

Weekly cases per 100,000 people

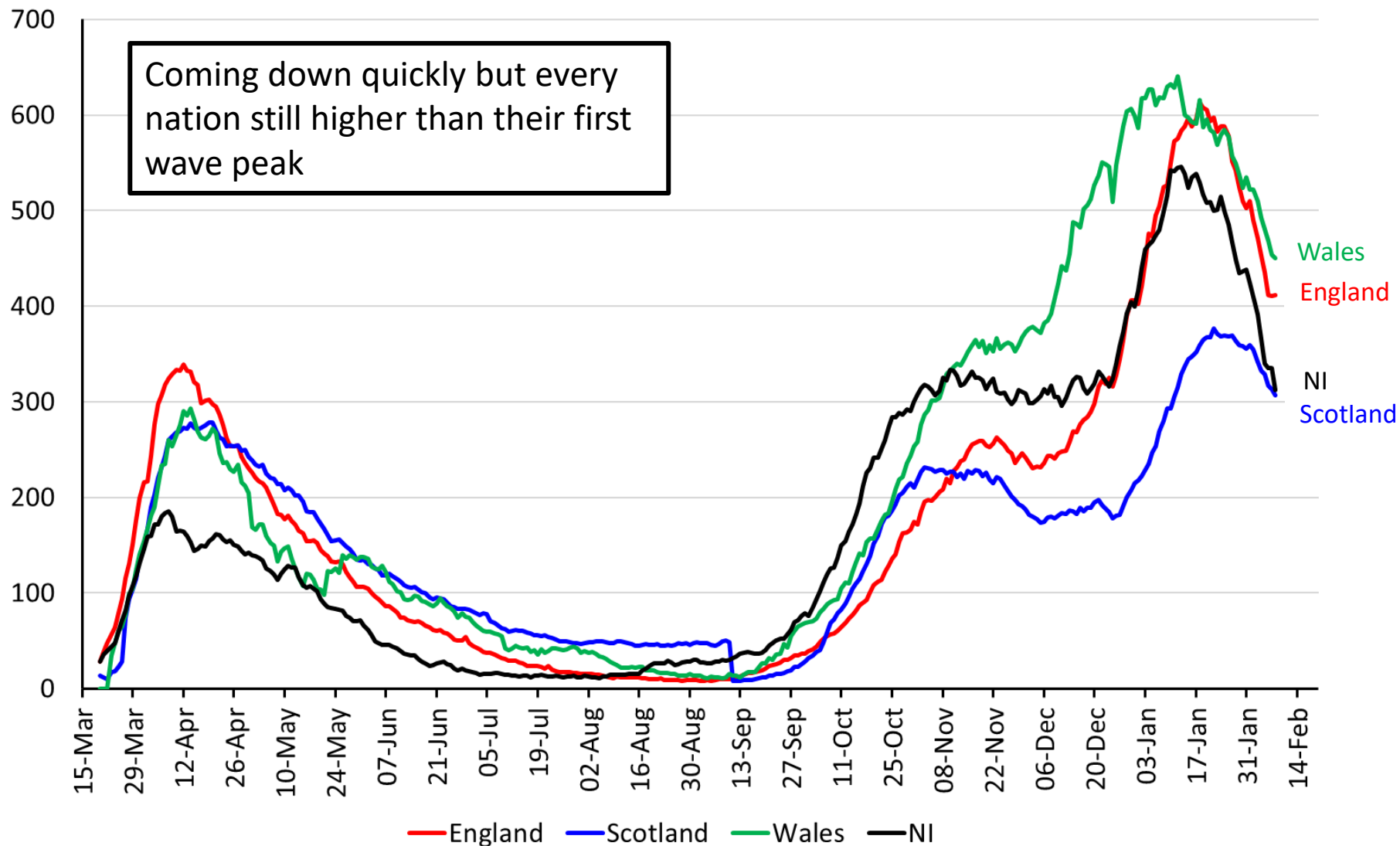


Data: <https://api.coronavirus.data.gov.uk/v2/data?areaType=ltla&metric=newCasesBySpecimenDate&format=csv>

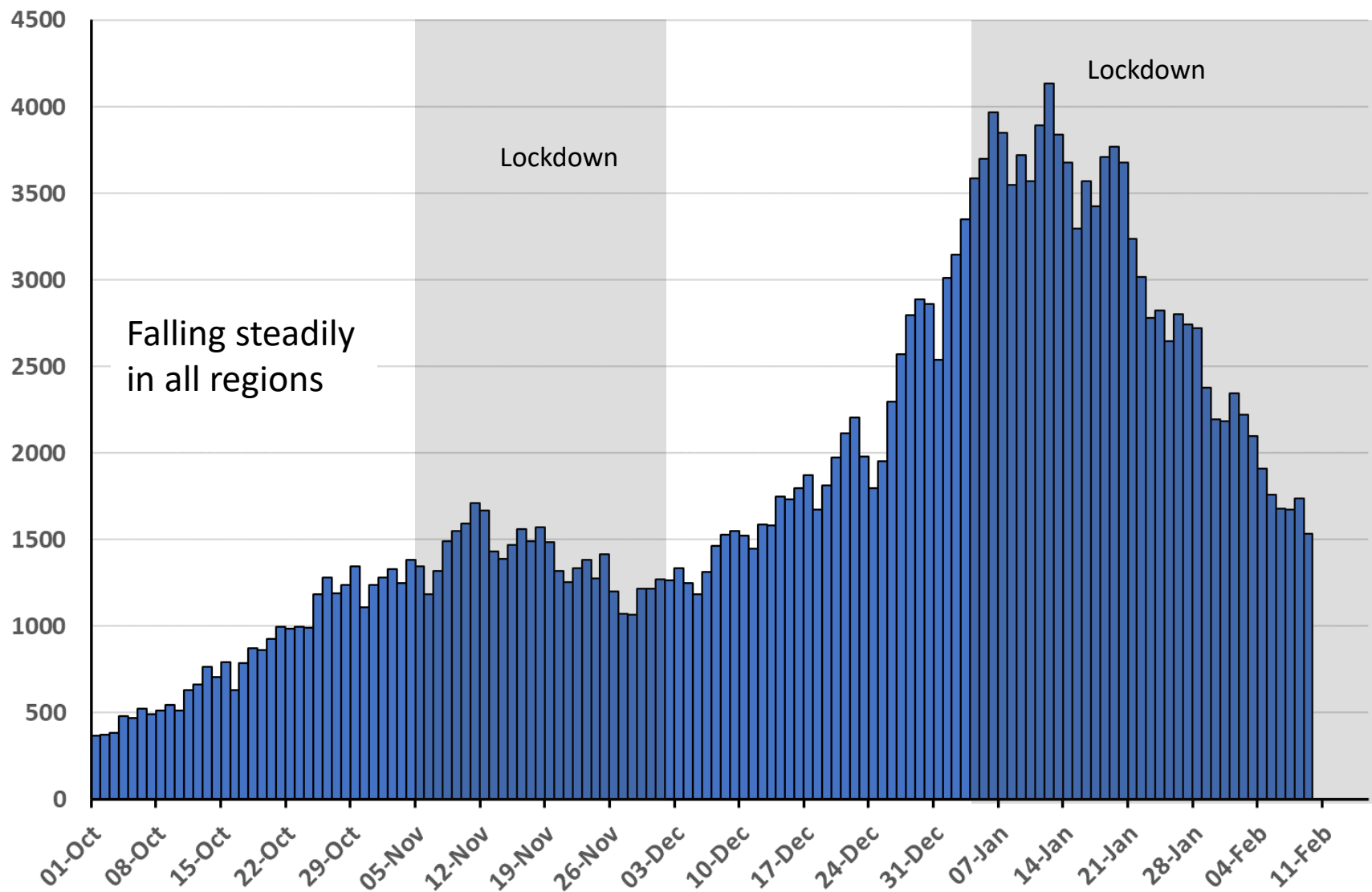
Thank you to Bob Hawkins for the chart

Hospitalisations

Number of people in hospital per million people – UK nations



Number of new hospital admissions with COVID-19 per day in England to 26th Jan

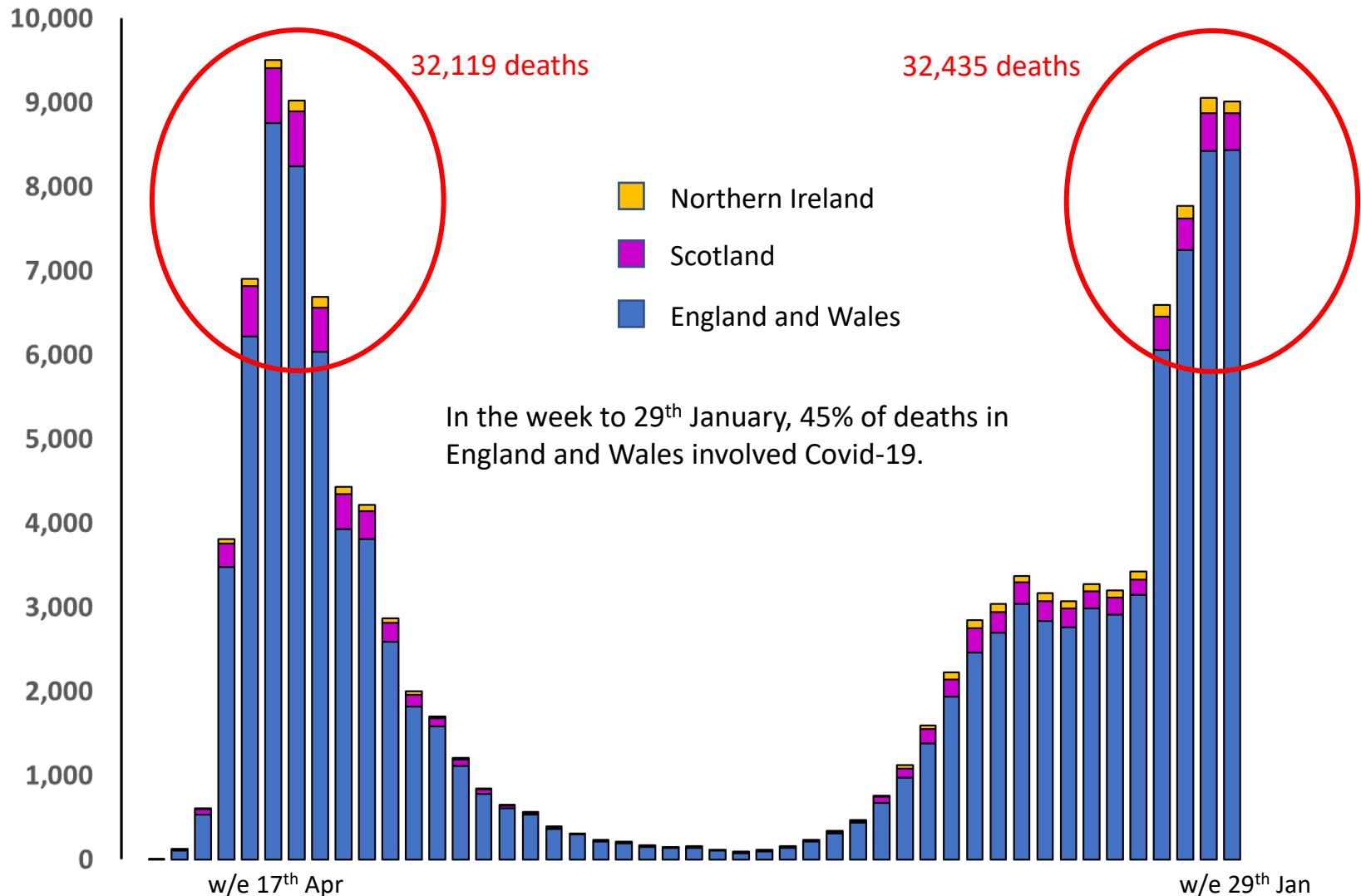


Number of Adult Critical Care Bed Occupied Week on Week Comparison: England Regions



Deaths

Number of new UK deaths from COVID-19 registered per week, to 15th January



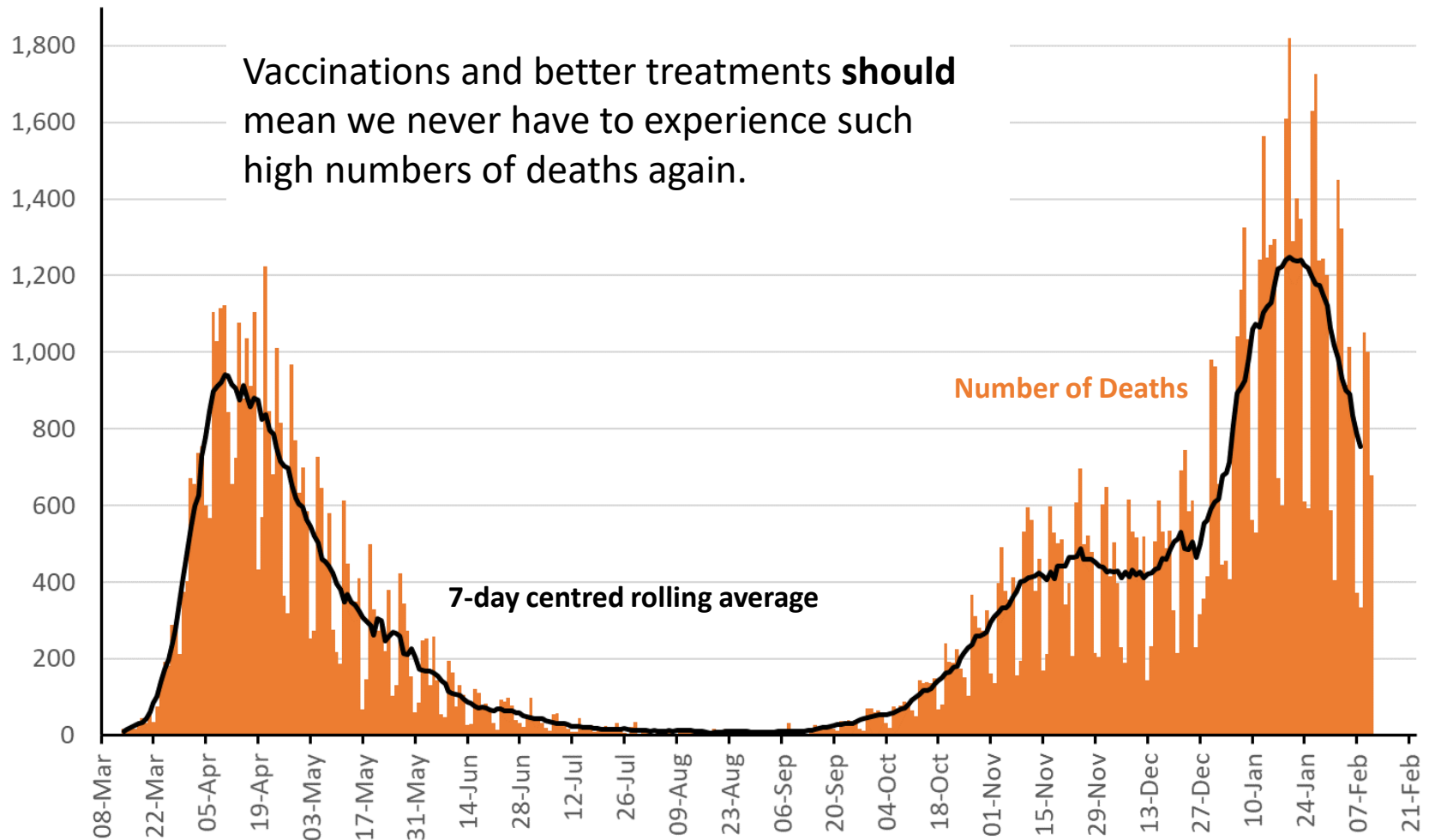
Data from :

England and Wales: www.ons.gov.uk/peoplepopulationandcommunity/birthsdeathsandmarriages/deaths/bulletins/deathsregisteredweeklyinenglandandwalesprovisional/latest

Scotland: <https://data.gov.scot/coronavirus-covid-19/detail.html>

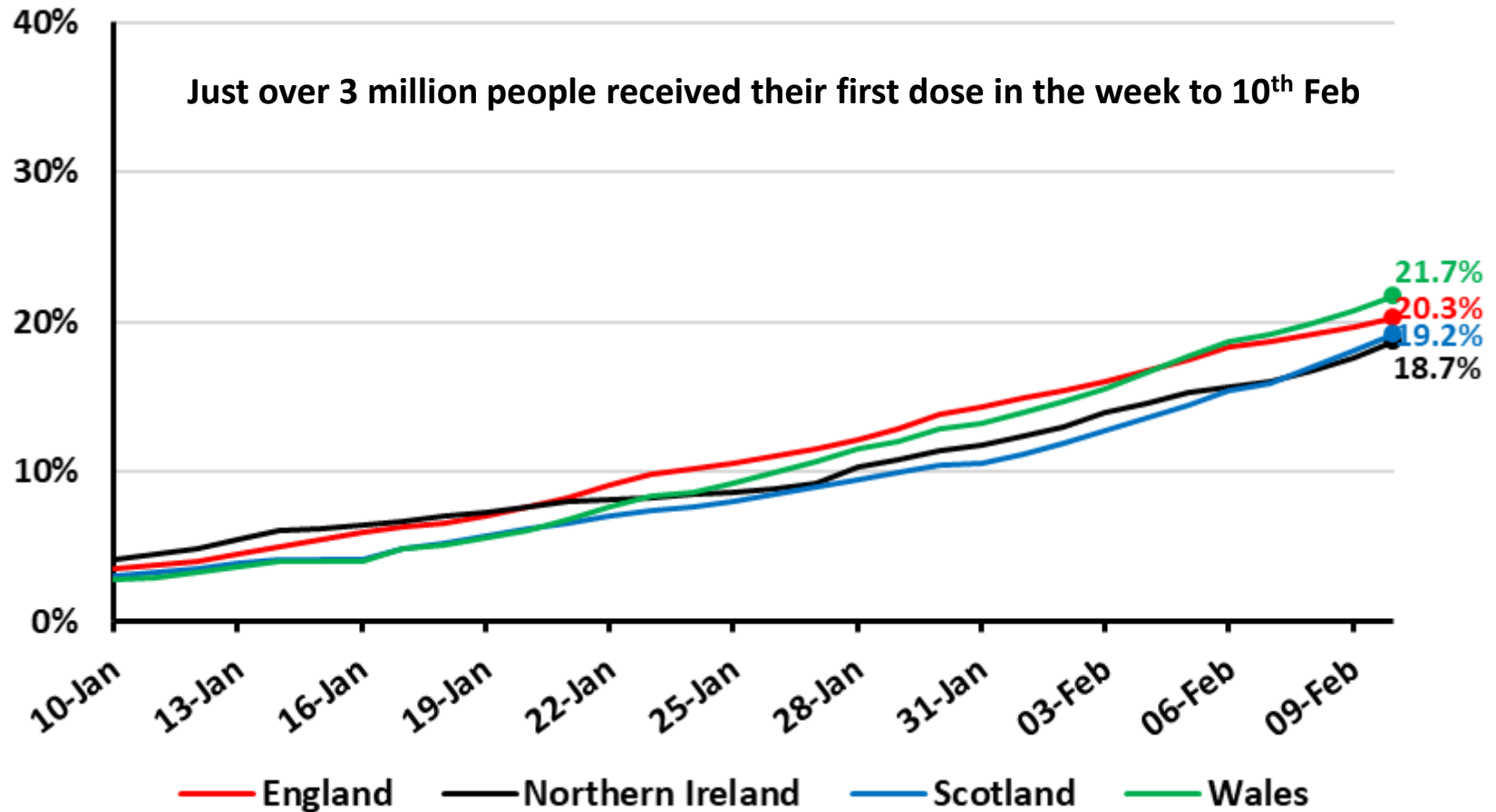
Northern Ireland: www.nisra.gov.uk/publications/weekly-deaths

Number of deaths within 28 days of +ve COVID test reported per day across the UK to 11th Feb



Vaccination data

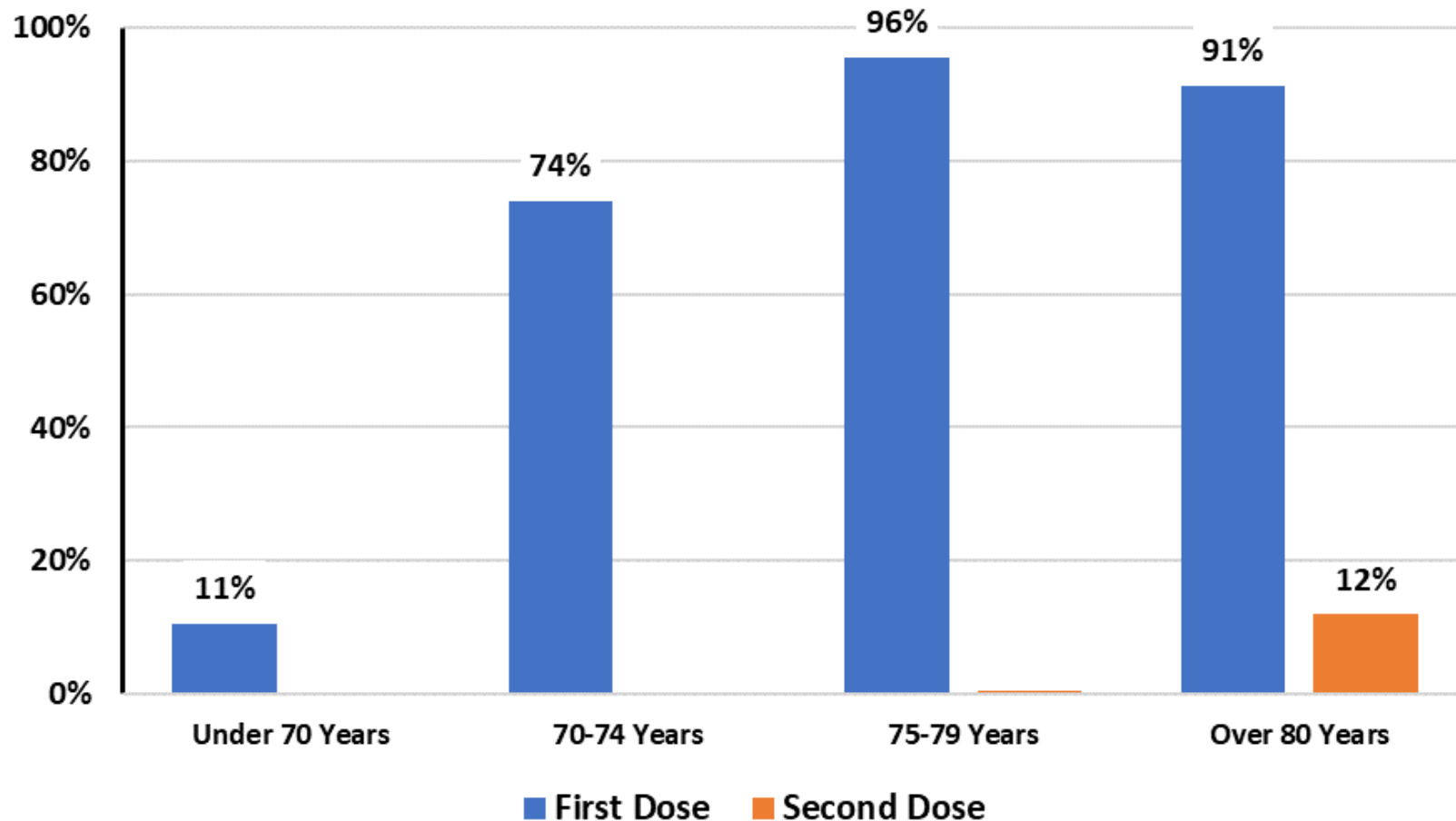
Proportion of people vaccinated over time for each nation to 10th February



Data from <https://coronavirus.data.gov.uk/>

Thanks to Bob Hawkins for the chart

Population coverage by age to 10th February



Data from <https://www.england.nhs.uk/statistics/statistical-work-areas/covid-19-vaccinations/>
Thanks to Bob Hawkins for the chart

Vaccine impact

Impact from vaccination takes time to filter through...

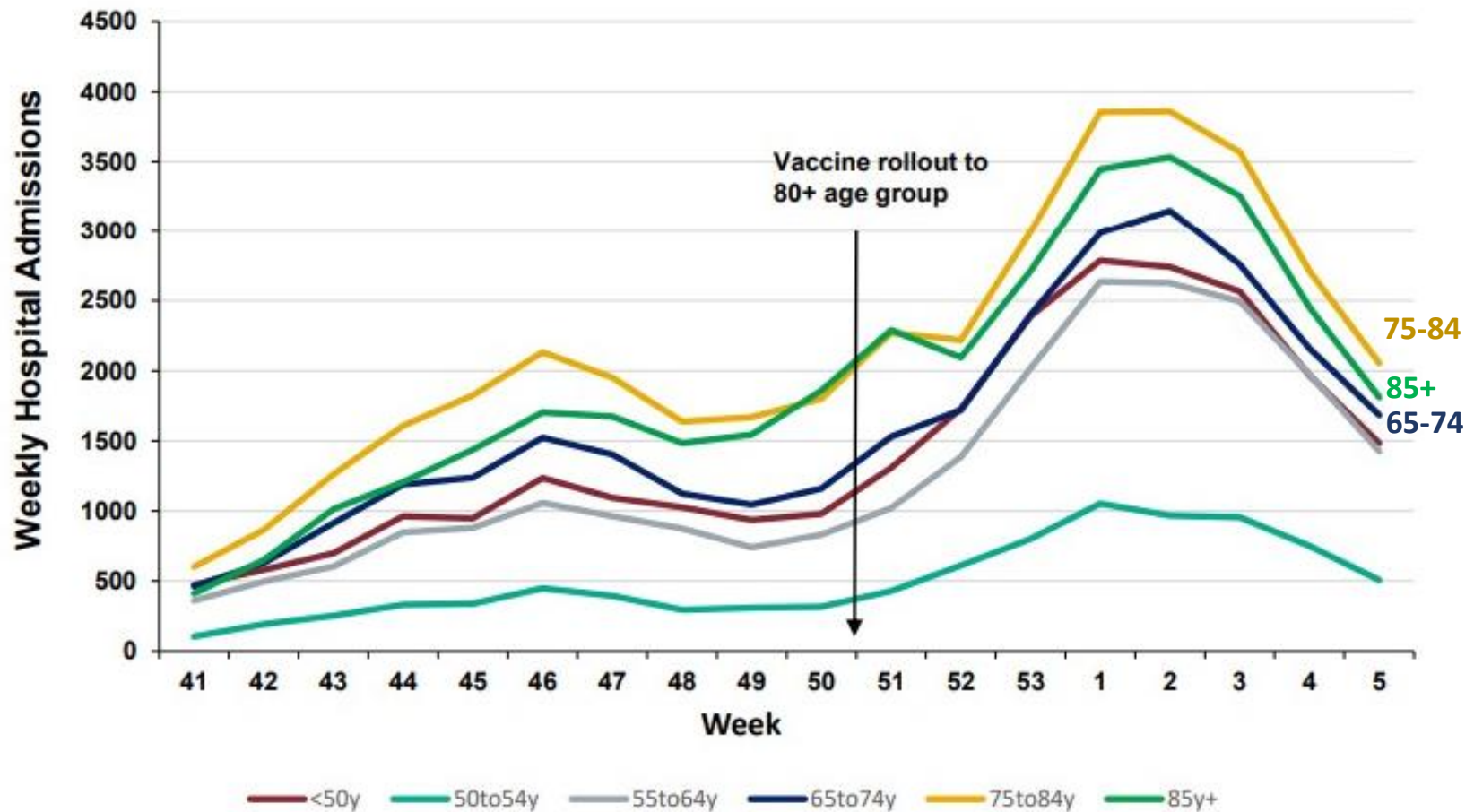
Two weeks for protection after first dose to kick in.

Then two weeks before you that might results in reductions in hospital admissions.

Three weeks before you might see fewer deaths.

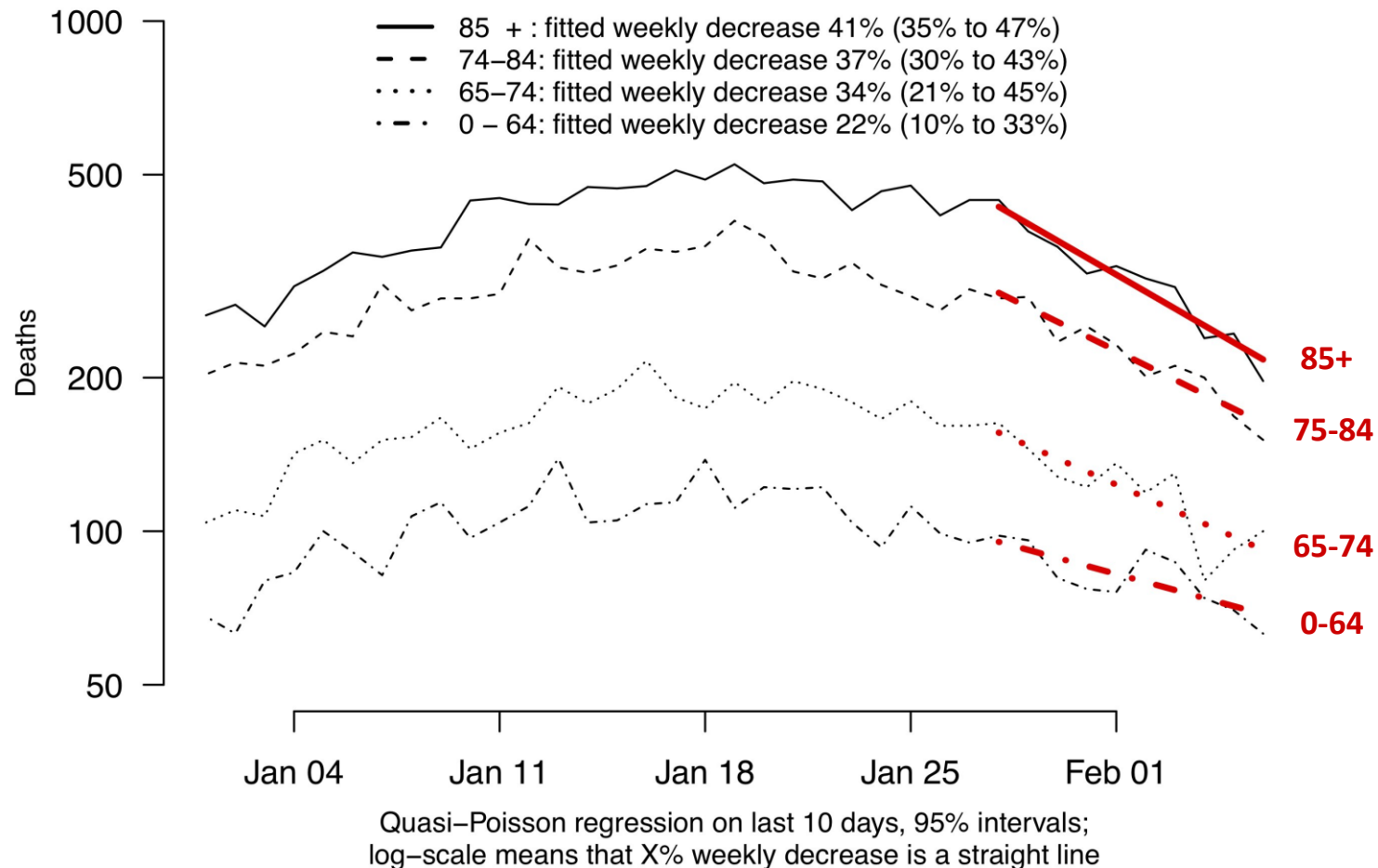
In England, we'd vaccinated about a quarter of over 80s by 3rd Jan 2021.

Weekly hospitalisations for Covid-19 by age group to 7th Feb (Public Health England)



Graph from https://assets.publishing.service.gov.uk/government/uploads/system/uploads/attachment_data/file/960373/Weekly_COVID-19_and_Influenza_Surveillance_Graphs_W6.pdf

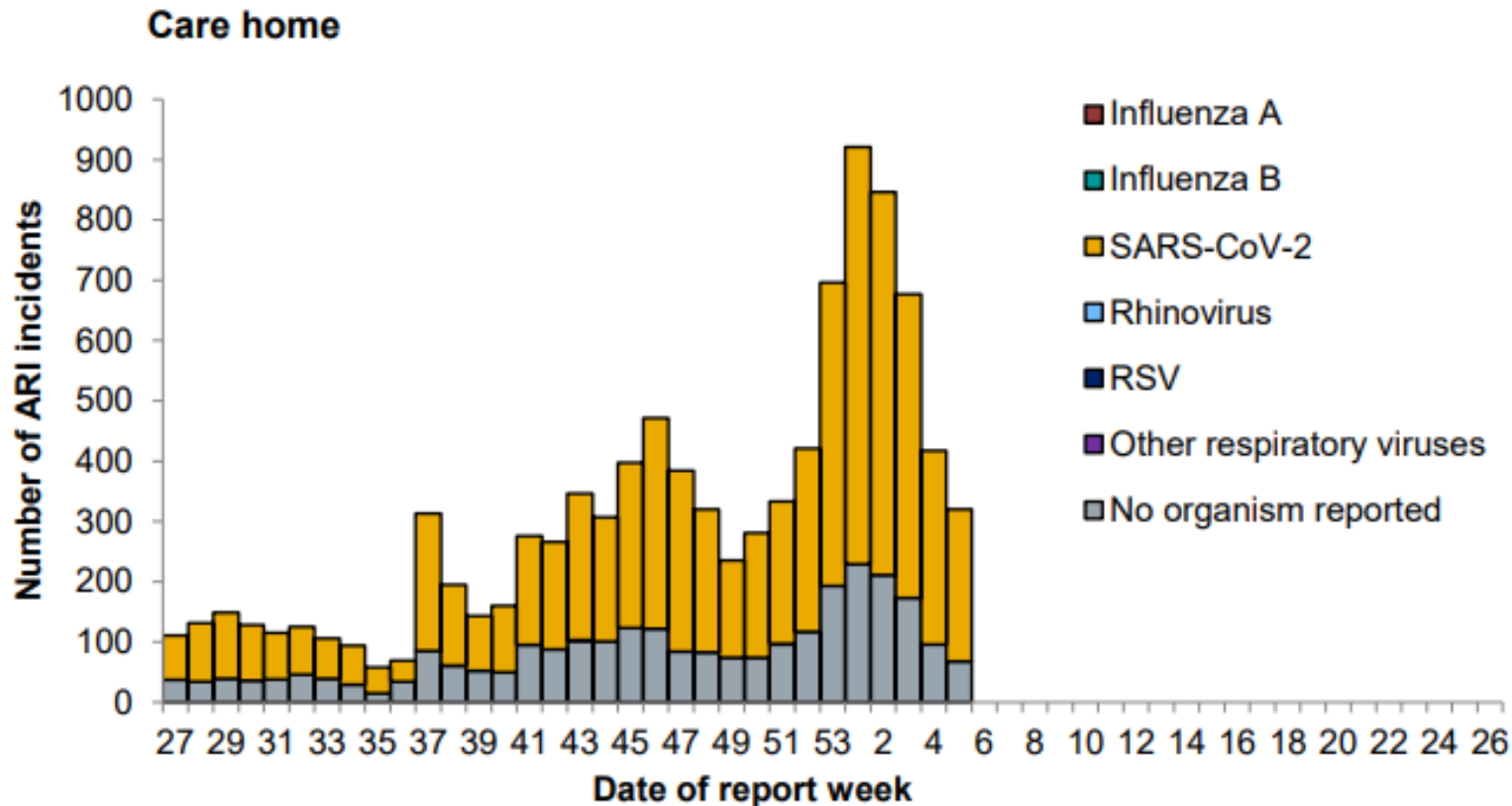
Death within 28 days of a positive test by age group (England)



Graph from Prof Spiegelhalter https://twitter.com/d_spiegel/status/1359941056842891267?s=20

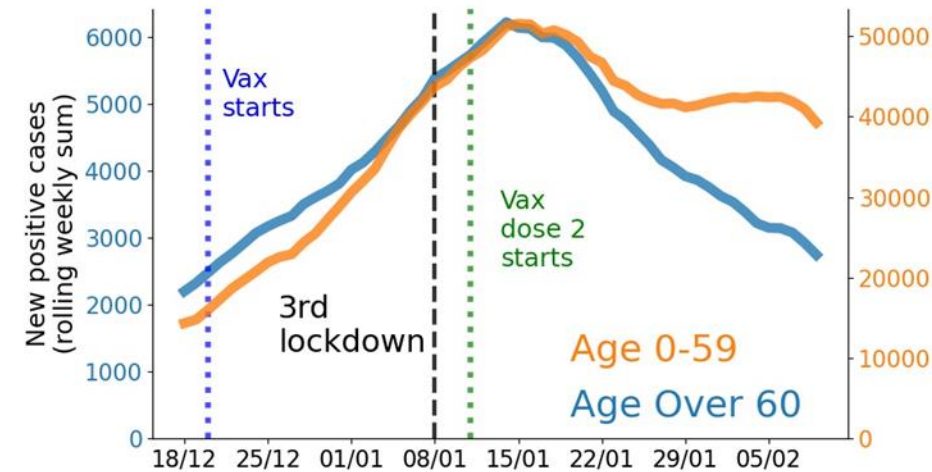
Data from <https://coronavirus.data.gov.uk/>

Outbreaks within care homes: England (to week ending 7th Feb)



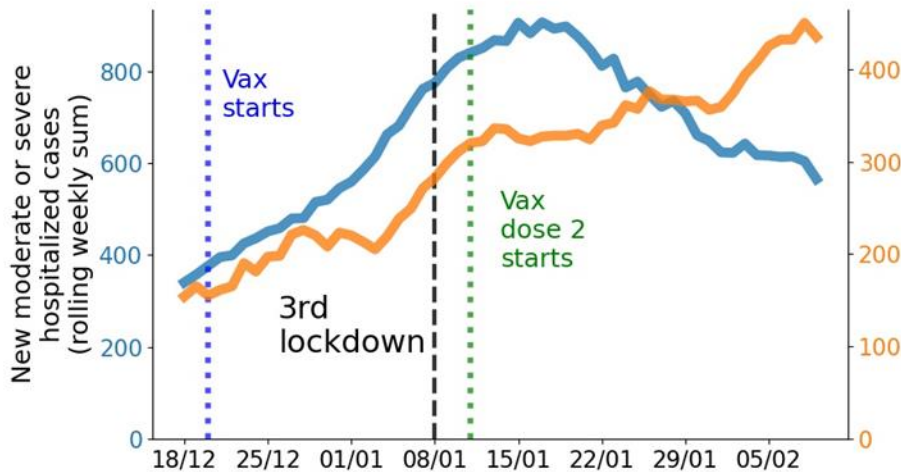
Graph from https://assets.publishing.service.gov.uk/government/uploads/system/uploads/attachment_data/file/960421/Weekly_Flu_and_COVID-19_report_w6.pdf

Experience in Israel. Over 90% of over 60's now vaccinated.

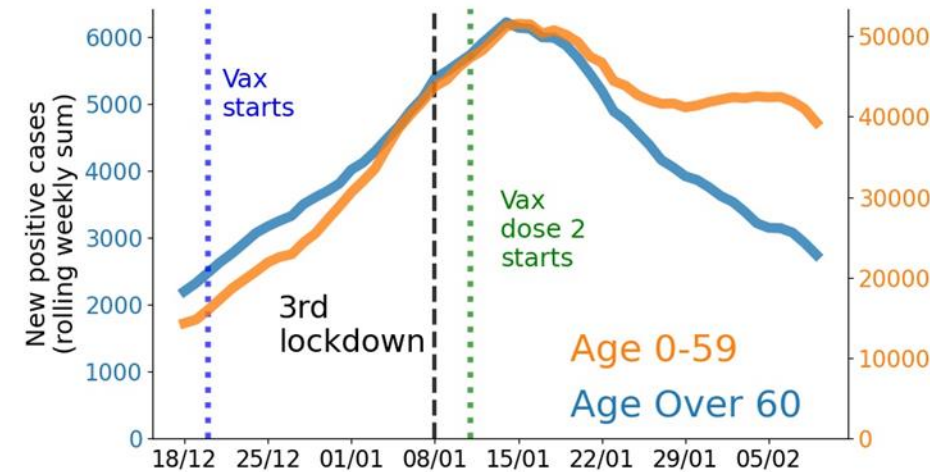


80% of over 60s received first dose within 3 weeks of programme start.

Israel vaccinated to a 3-week dose schedule.



Experience in Israel. Over 90% of over 60's now vaccinated.

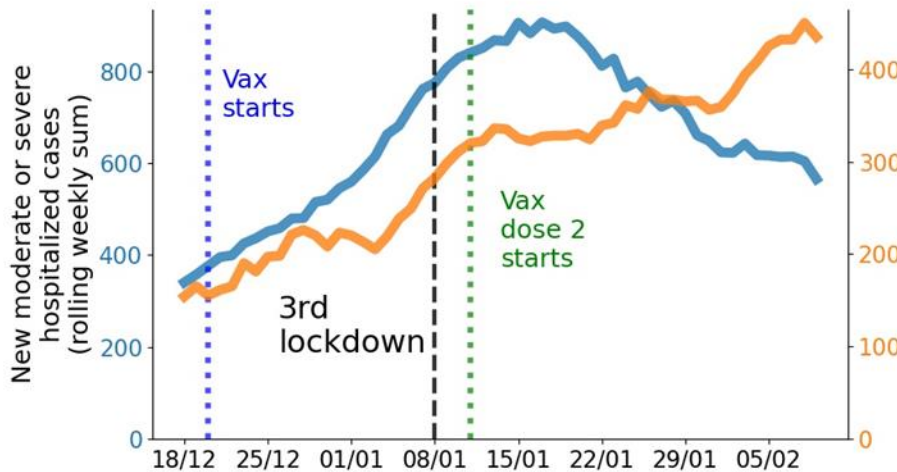


80% of over 60s received first dose within 3 weeks of programme start.

Israel vaccinated to a 3-week dose schedule.

Hopefully we will start seeing such clear impact on deaths & hospitalisations in the UK by the end of the month.

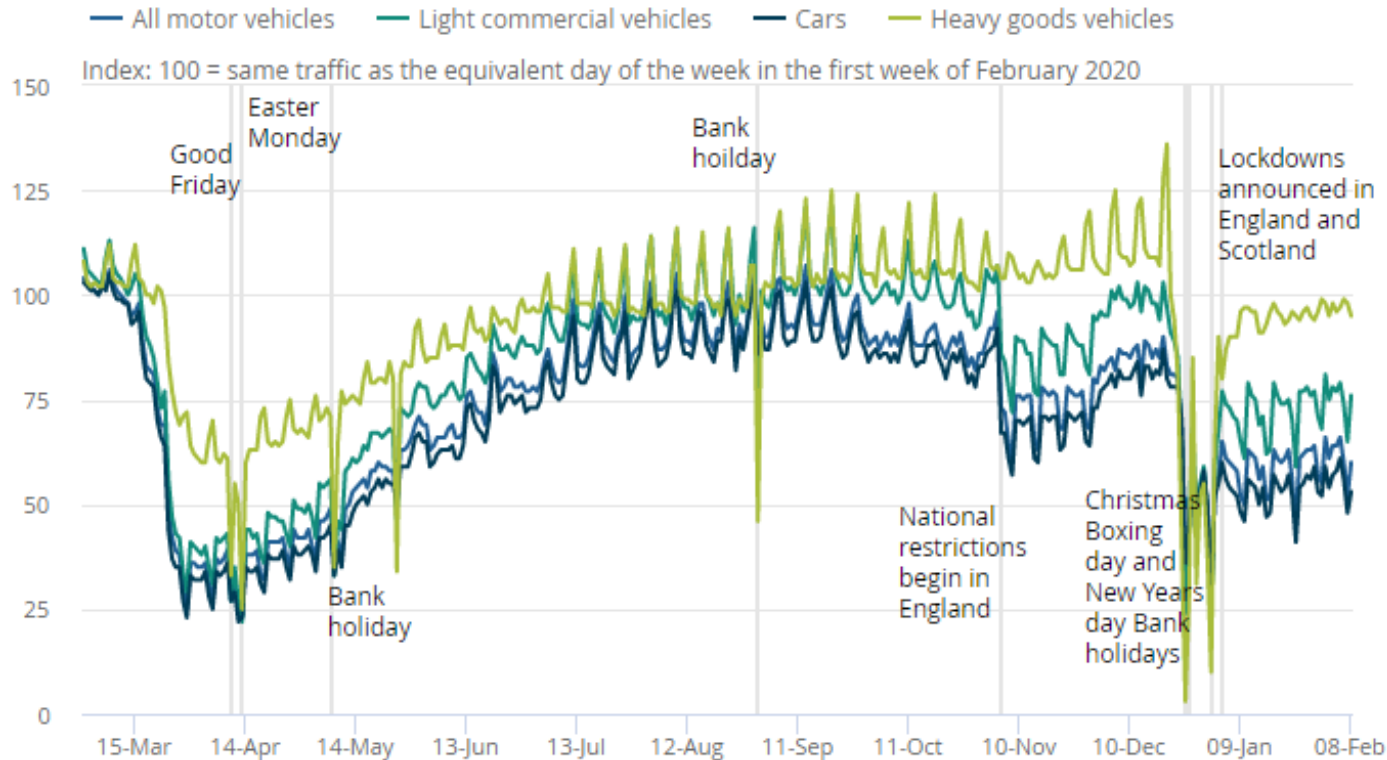
BUT remember that 90% of cases are in the under 70s.



Relevant data for
easing
restrictions

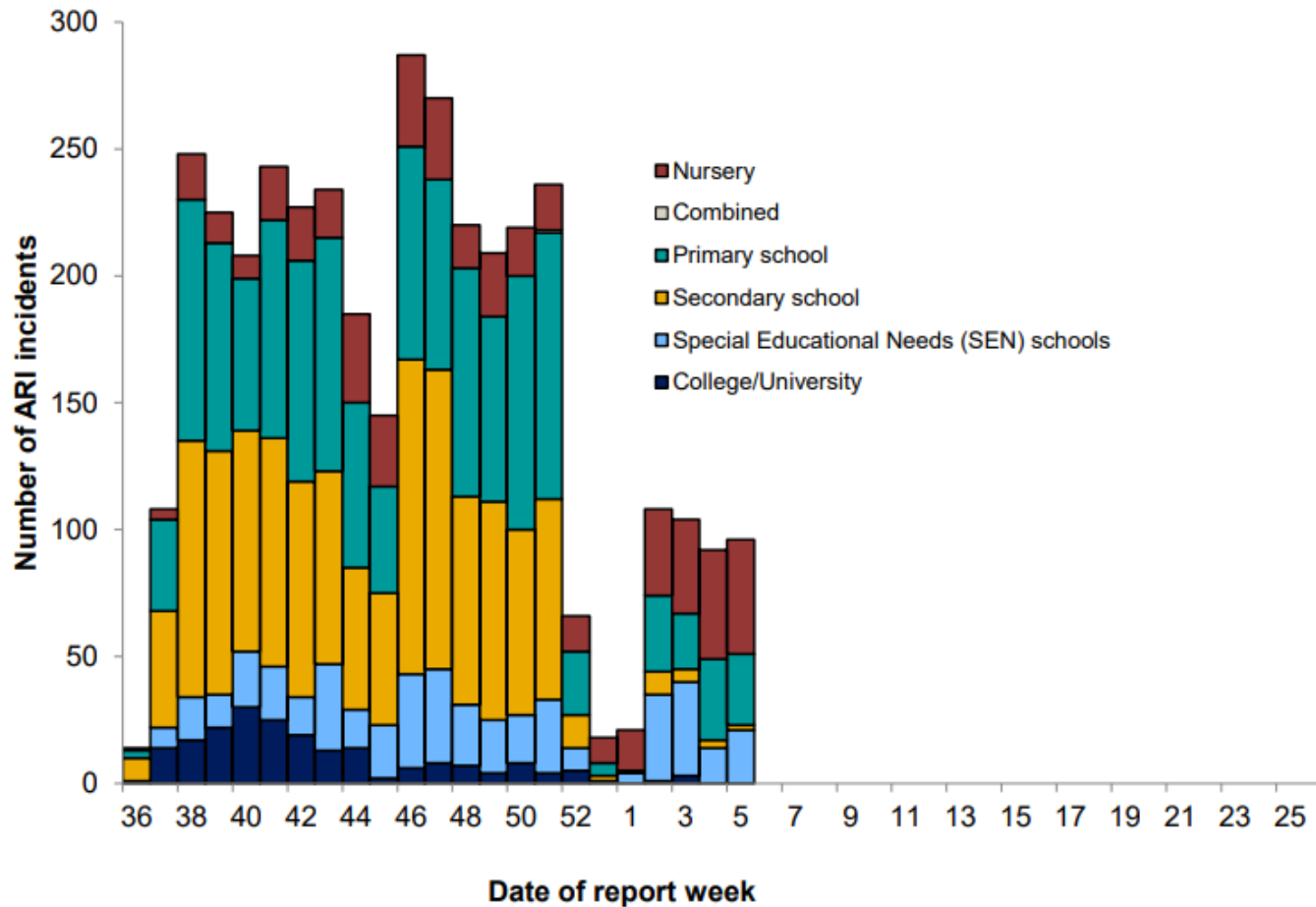
We are out and about more than lockdown 1 but less than lockdown 3

Much of that is going to work



Graph from
<https://www.ons.gov.uk/peoplepopulationandcommunity/healthandsocialcare/conditionsanddiseases/bulletins/coronavirustheukeneconomyandsocietyfasterindicators/11february2021>

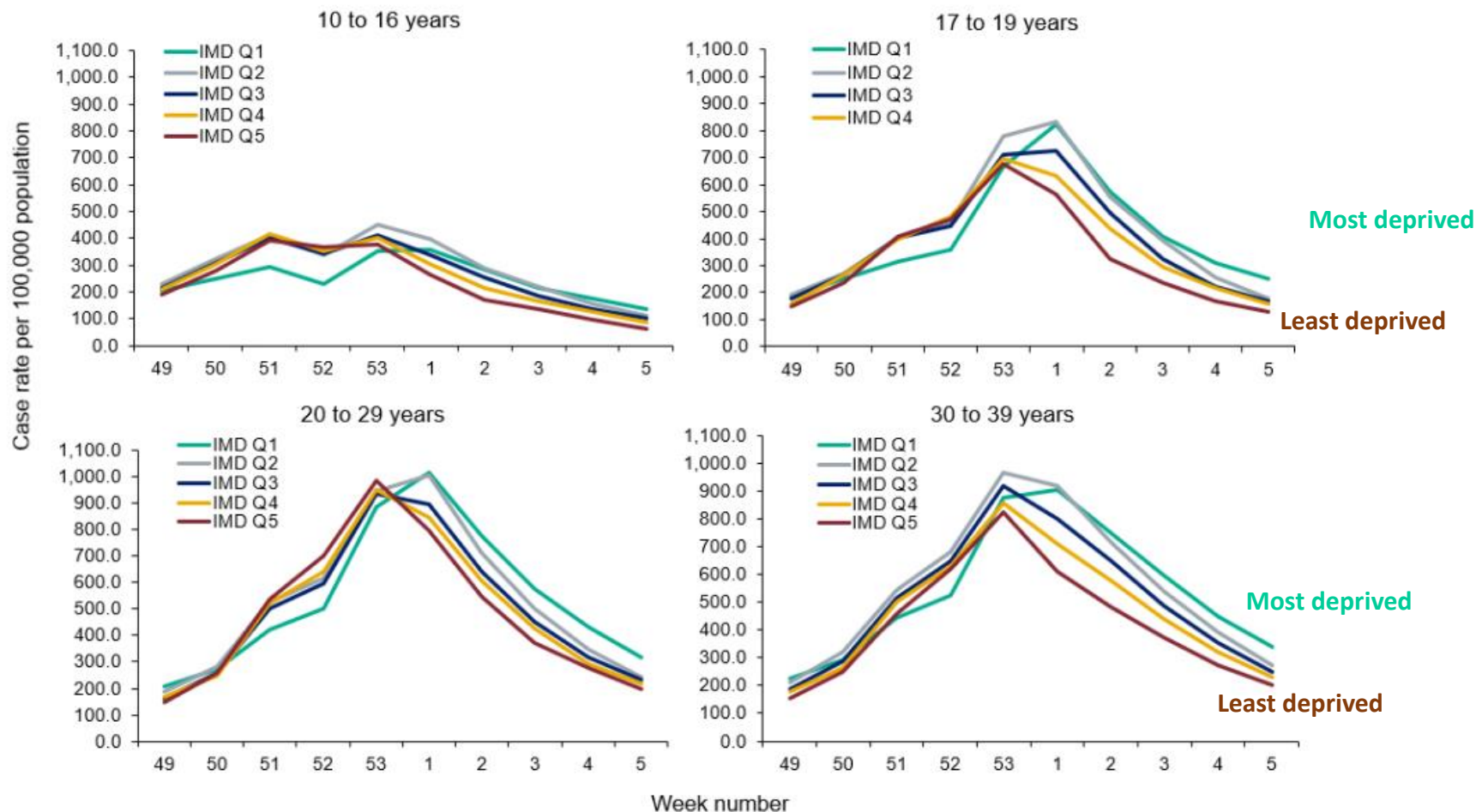
There have been a steady number of outbreaks in nurseries, primary schools and special educational needs (SEN) schools. Data to week ending 7th February (England)



Graph from https://assets.publishing.service.gov.uk/government/uploads/system/uploads/attachment_data/file/960373/Weekly_COVID-19_and_Influenza_Surveillance_Graphs_W6.pdf

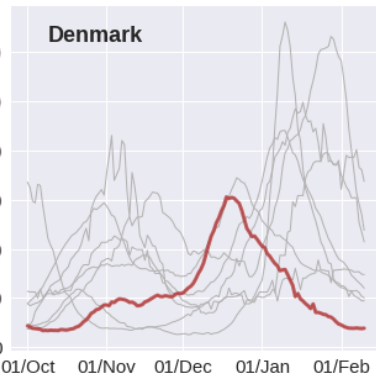
During lockdown, more deprived communities (Q1) at higher risk of catching Covid – more exposed

Data to week ending 7th February (England)

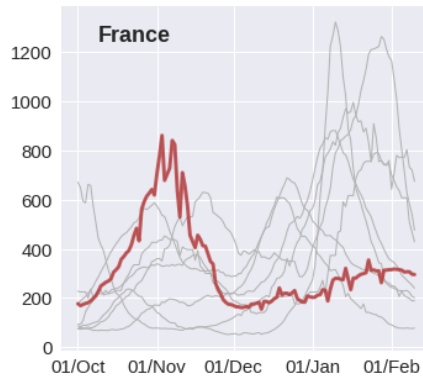


International picture: cases 1st October – 10th February

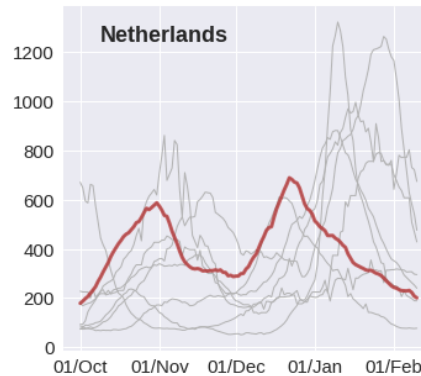
Daily Cases (7 day moving average per million people)



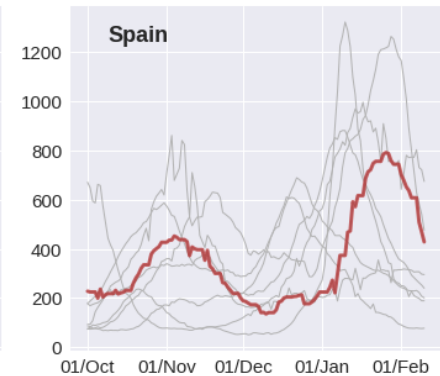
About 20% of cases are B117
Schools / hospitality shut,
lockdown.



About 15% of cases are B117
Schools open (w masks)
Hospitality closed.



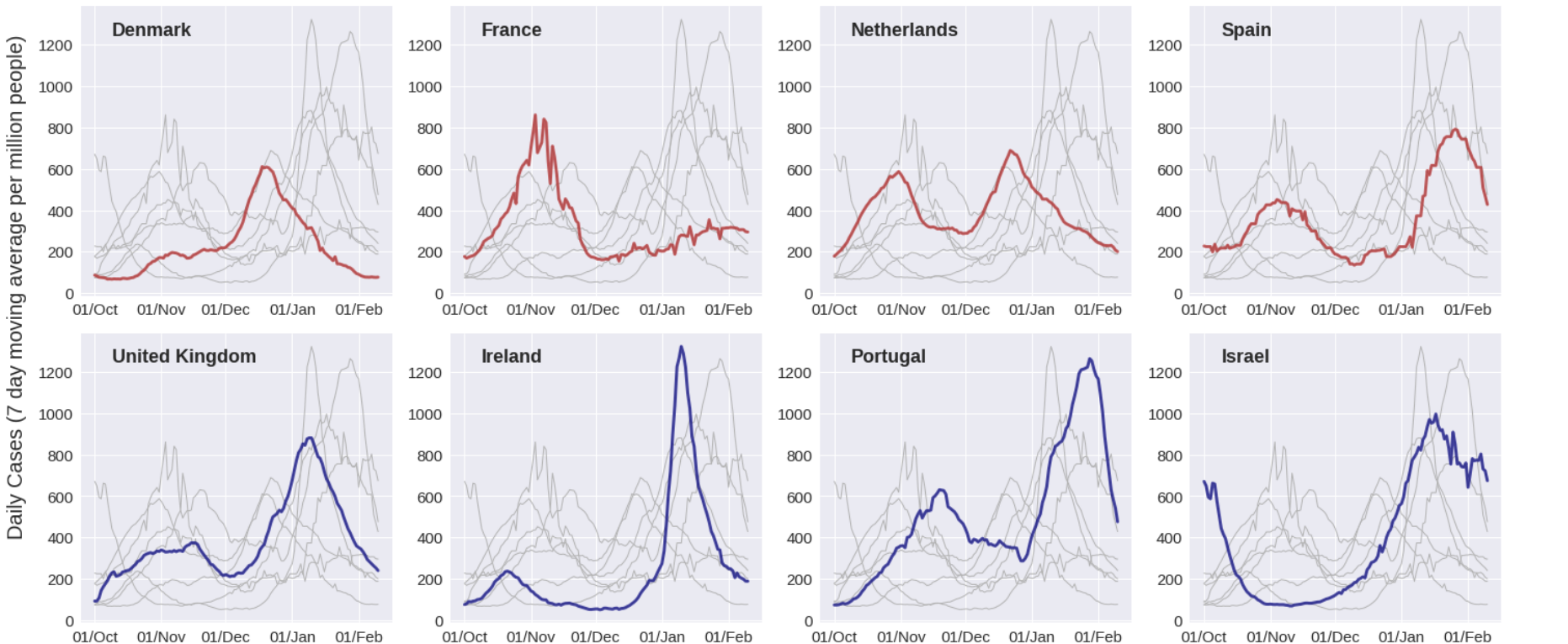
About 50% of cases are B117
Schools / hospitality shut, curfew.
Mid Jan: $R=0.85$ for original
variant, $R=1.27$ for B117



B117 varies by region (5-40%).
Regional travel restrictions
Curfews & no household mixing
Schools & hospitality vary by
region.

[[www.ourworldindata.org/coronavirus](https://ourworldindata.org/coronavirus)]

International picture: cases 1st October – 10th February



[www.ourworldindata.org/coronavirus]

About 90% of cases are B117
Schools / hospitality shut,
lockdown.

At least 75% of cases are B117
Hospitality closed. Lockdown
Schools to phase reopen from
22 Feb

B117 becoming dominant
Schools / hospitality shut,
lockdown since mid Jan.

B117 dominant.
Hospitality shut
Schools about to phase open
Lockdown

Summary

Cases, hospitalisations and deaths now falling in all nations.

Vaccination going well – next few weeks should see clearer impact. BUT government must have detailed data of efficacy. Will they publish it?

Relaxing restrictions will be tricky – next week we will discuss this in more detail.

Variants are the global concern.