

Latest numbers on COVID-19 in the UK – 25th June 2021

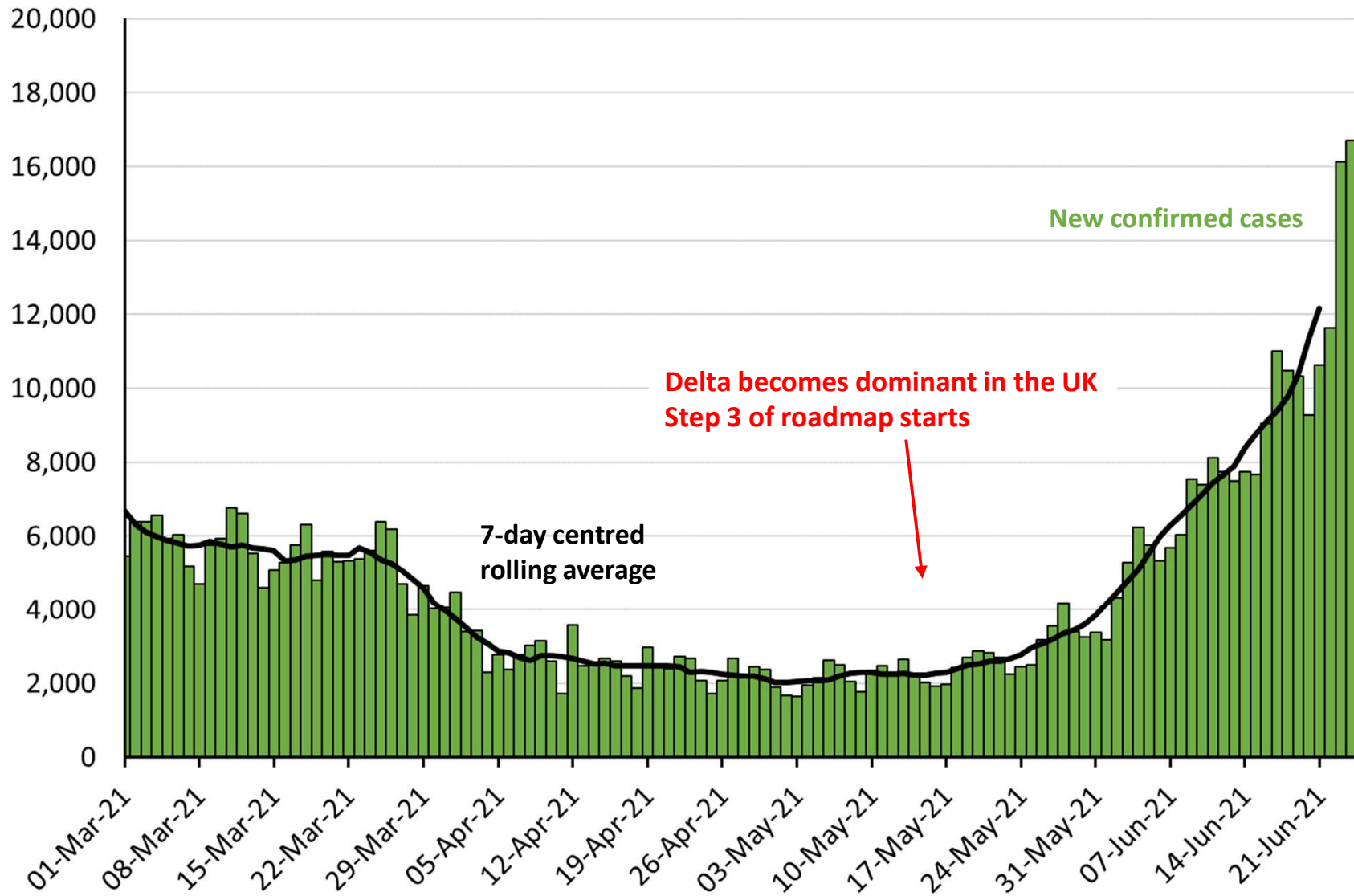
Very brief look at:

Cases, hospitalisations, and what high levels of infection mean.

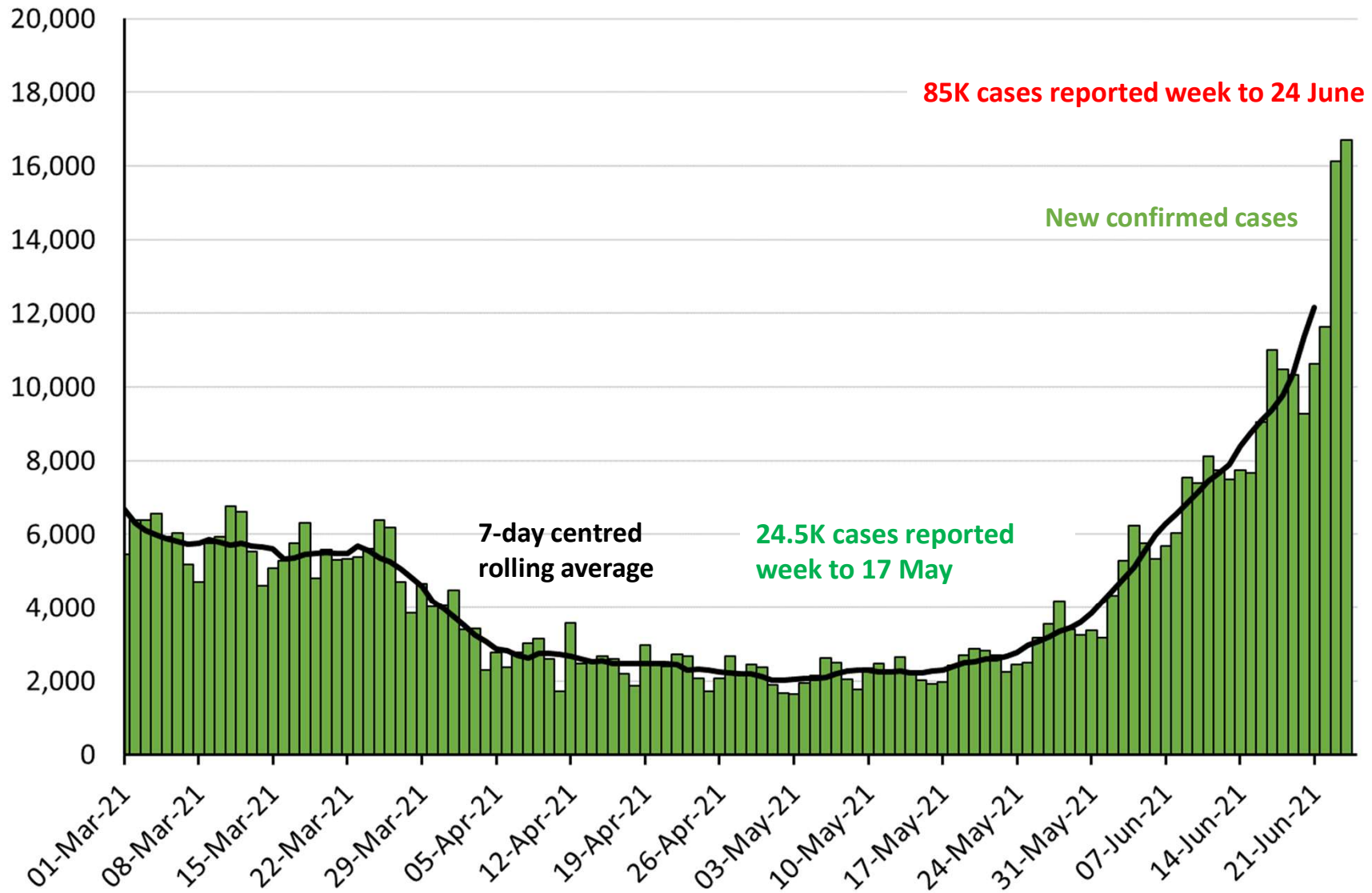
Next week: fuller dive into the data...

With many thanks to Bob Hawkins for his help in collating the data

Number of new UK confirmed COVID-19 cases by reported date (people who have had a positive test)

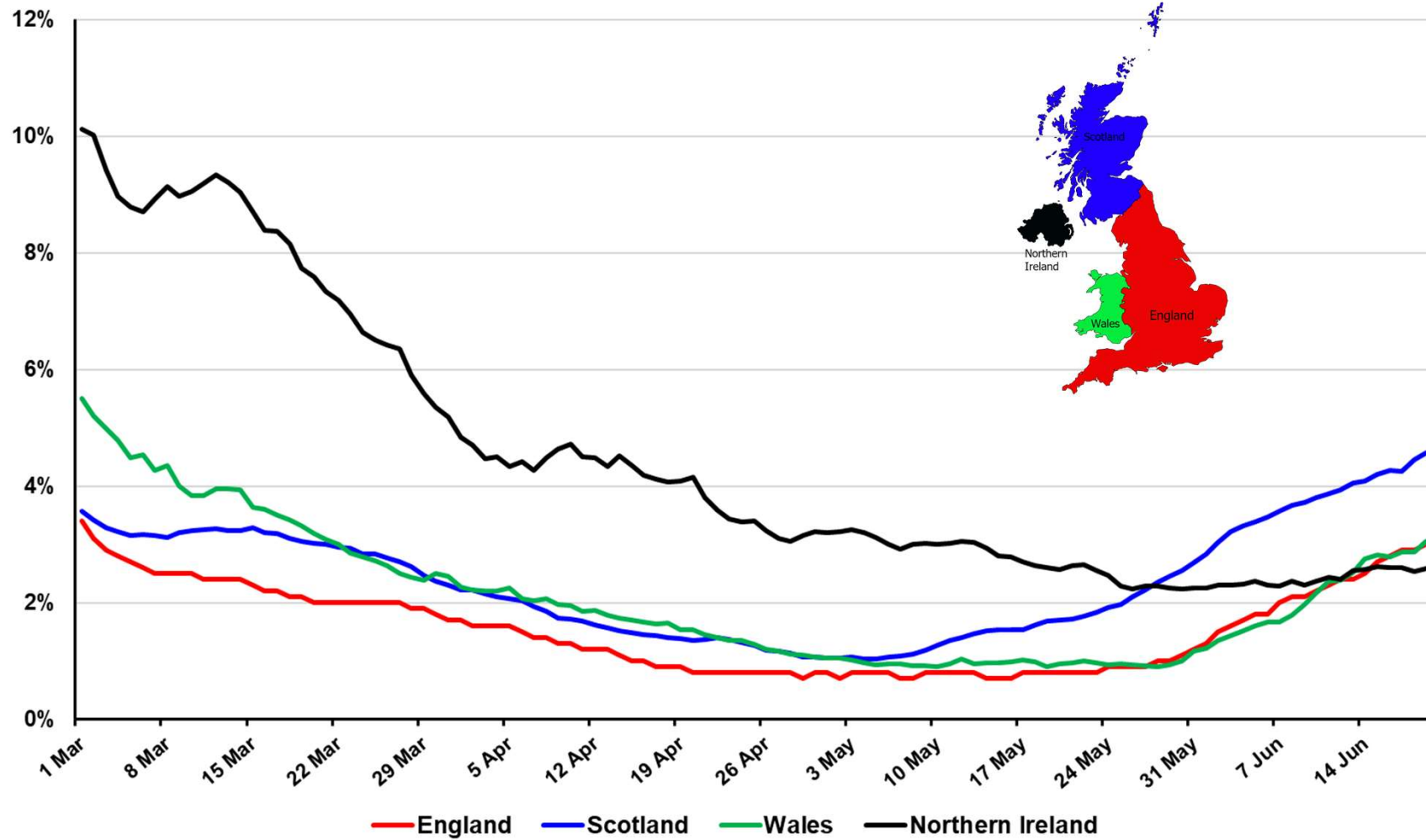


Number of new UK confirmed COVID-19 cases by reported date (people who have had a positive test)



Daily Test Positivity Rate for the Home Nations Mar 1 – Jun 5

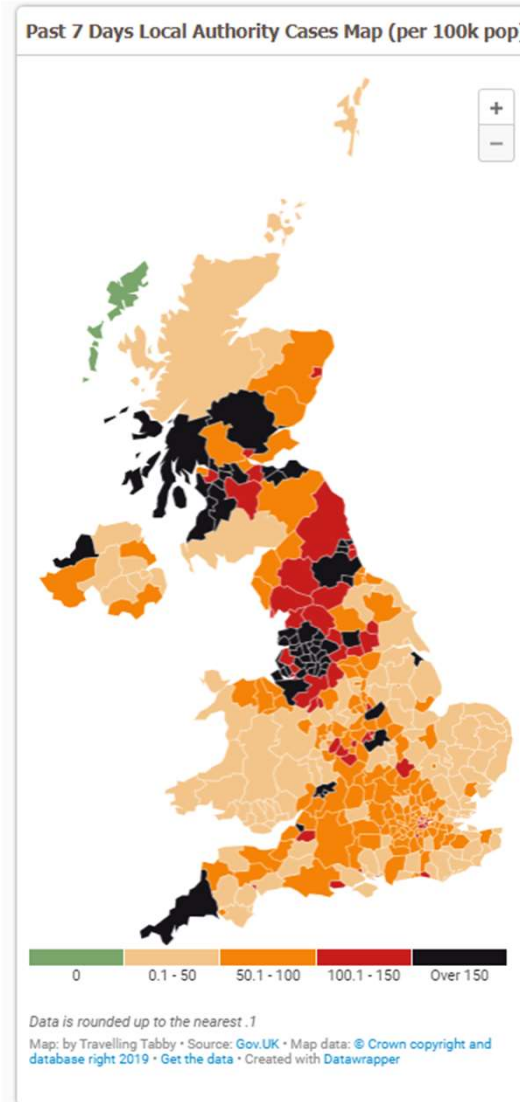
All rates are calculated based on PCR tests only and are comparable across the Home Nations



Data from:
 Scotland: <https://www.opendata.nhs.scot/dataset/covid-19-in-Scotland>
 Wales: <https://public.tableau.com/profile/public.health.wales.health.protection#!/vizhome/RapidCOVID-19virology-Public/Headlinesummary>
 NI: <https://www.health-ni.gov.uk/publications/daily-dashboard-updates-covid-19-november-2020>
 England: <https://coronavirus.data.gov.uk> . ONS <https://www.ons.gov.uk/peoplepopulationandcommunity/healthandsocialcare/conditionsanddiseases/bulletins/coronaviruscovid19infectionsurveypilot/latest>
 Visualisation courtesy of Bob Hawkins

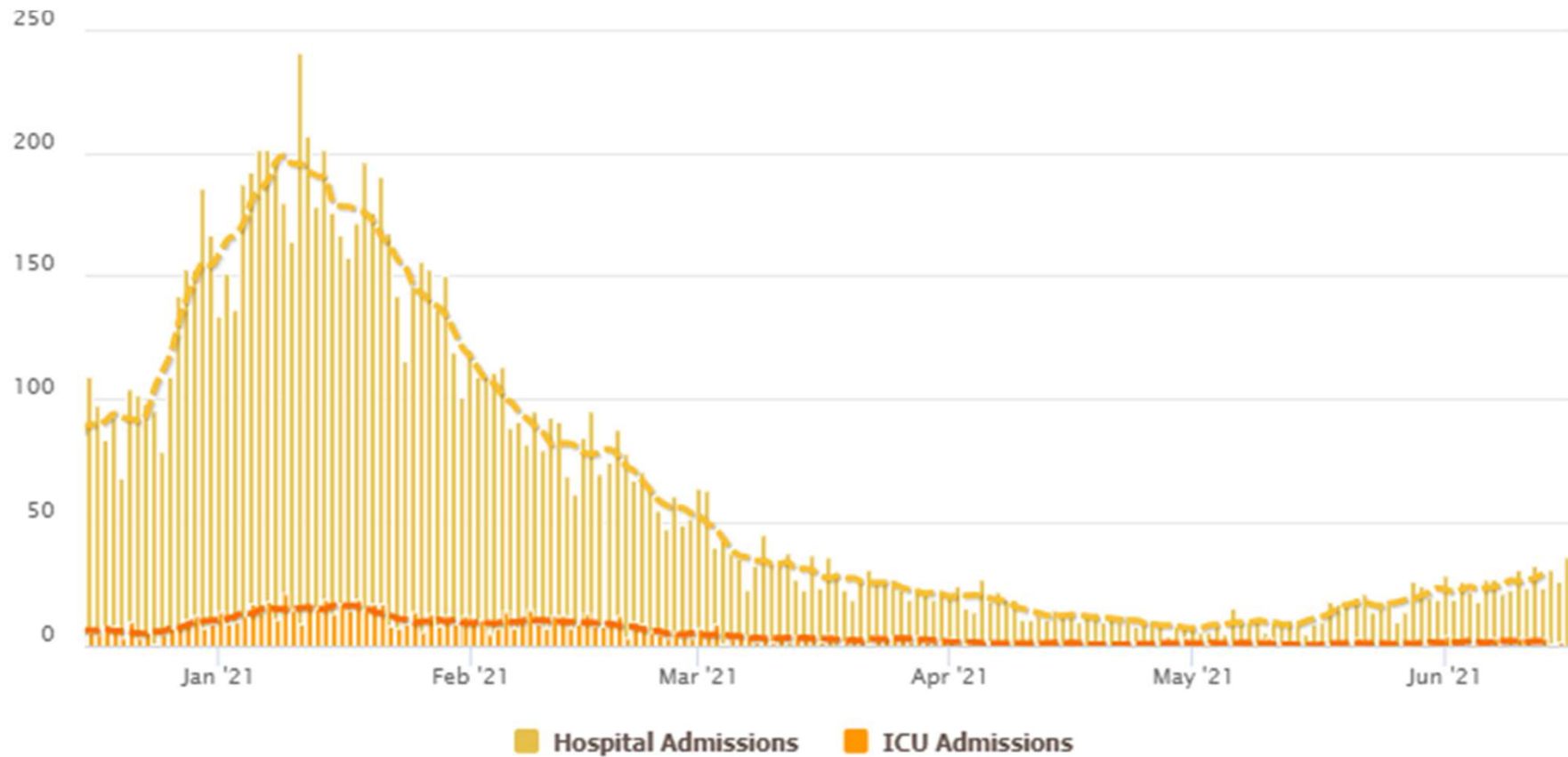
Infections are spreading, but not evenly across the UK

Week to 24th June



Graph from <https://www.travellingtabby.com/uk-coronavirus-tracker/local>

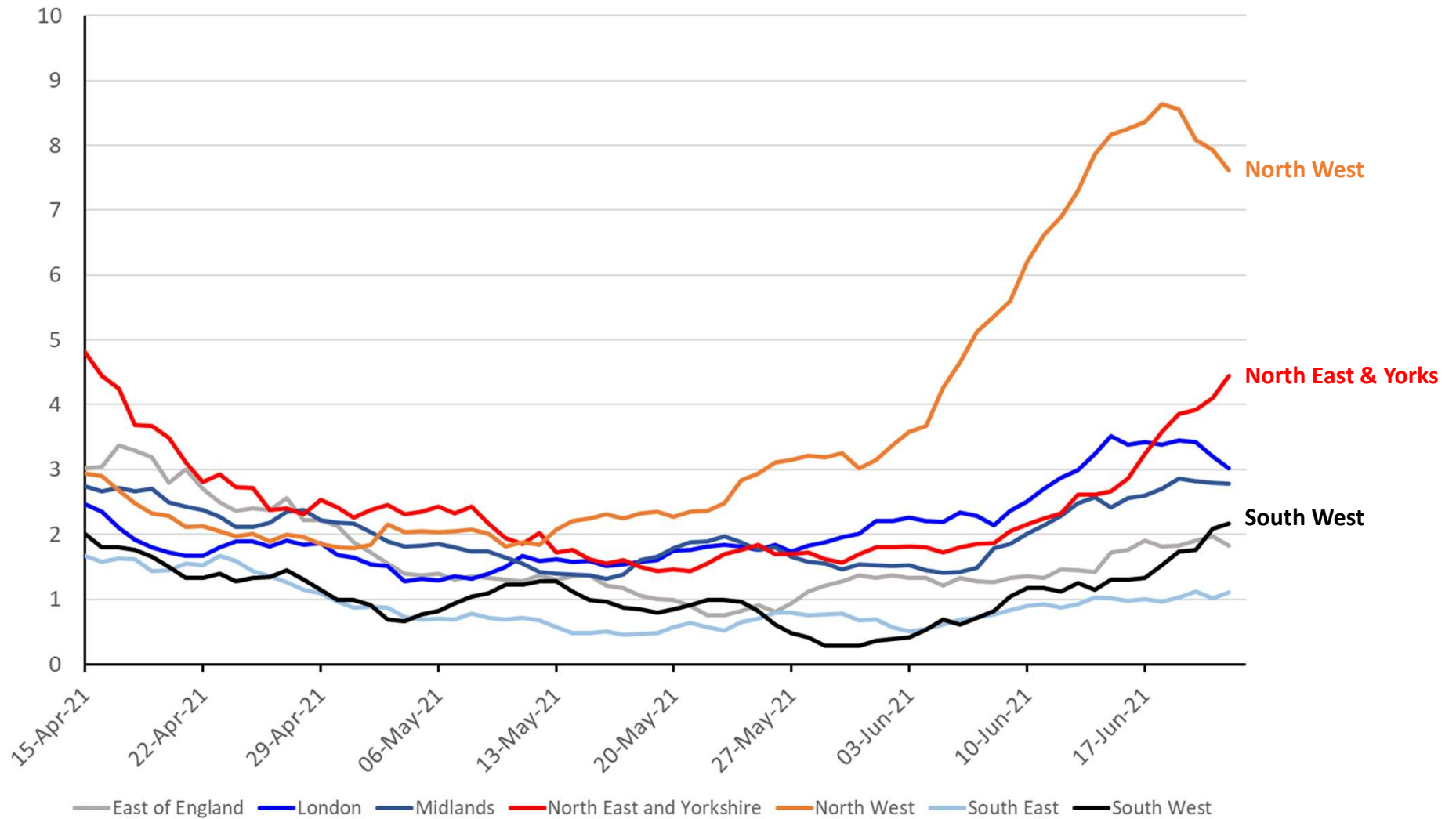
New hospital admissions in Scotland per day over last 6 months



This chart is updated once a week on Wednesday.

Graph from <https://www.travellingtabby.com/scotland-coronavirus-tracker/>

Number of new hospital admissions per day per million people with COVID-19 in England by region to 23rd June



Heat map of cases per 100,000 people per week by age group in England to 19 June

Half term

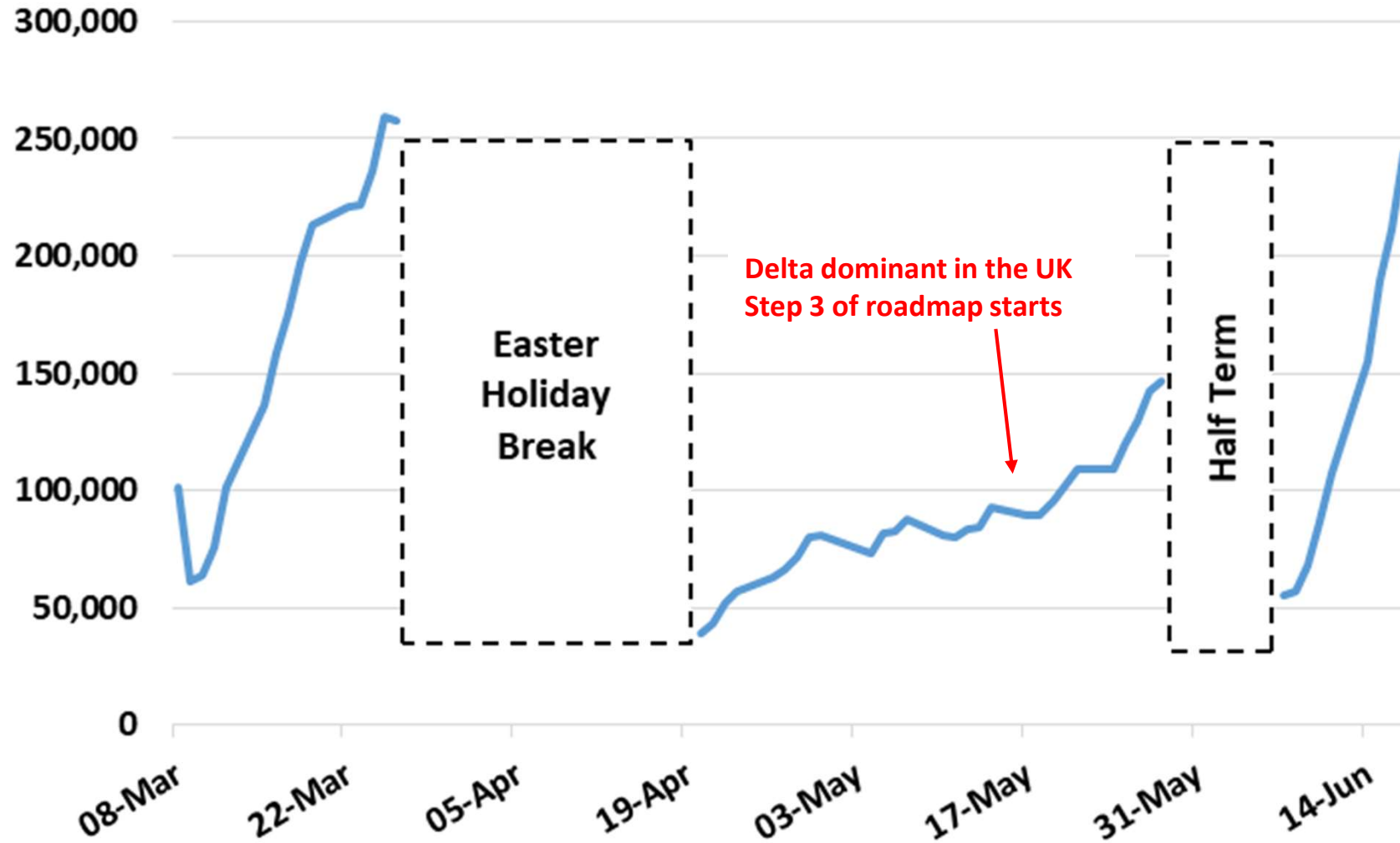


Age range	Week ending											Age range
	10-Apr	17-Apr	24-Apr	01-May	08-May	15-May	22-May	29-May	05-Jun	12-Jun	19-Jun	
0 to 4	18	15	14	14	14	16	18	20	22	28	35	0 to 4
5 to 9	28	23	21	23	25	30	37	44	46	49	70	5 to 9
10 to 14	52	41	45	46	48	52	56	72	81	98	136	10 to 14
15 to 19	53	48	47	44	42	48	56	71	104	161	232	15 to 19
20 to 29	40	40	36	35	31	34	34	45	86	165	235	20 to 29
30 to 39	48	43	38	35	31	35	37	44	63	90	104	30 to 39
40 to 59	43	37	32	29	28	29	30	35	46	64	76	40 to 59
50 to 59	29	25	20	19	18	19	20	24	31	42	50	50 to 59
60 plus	12	11	10	9	7	7	7	8	10	14	17	60 plus



Delta dominant in the UK
Step 3 of roadmap starts

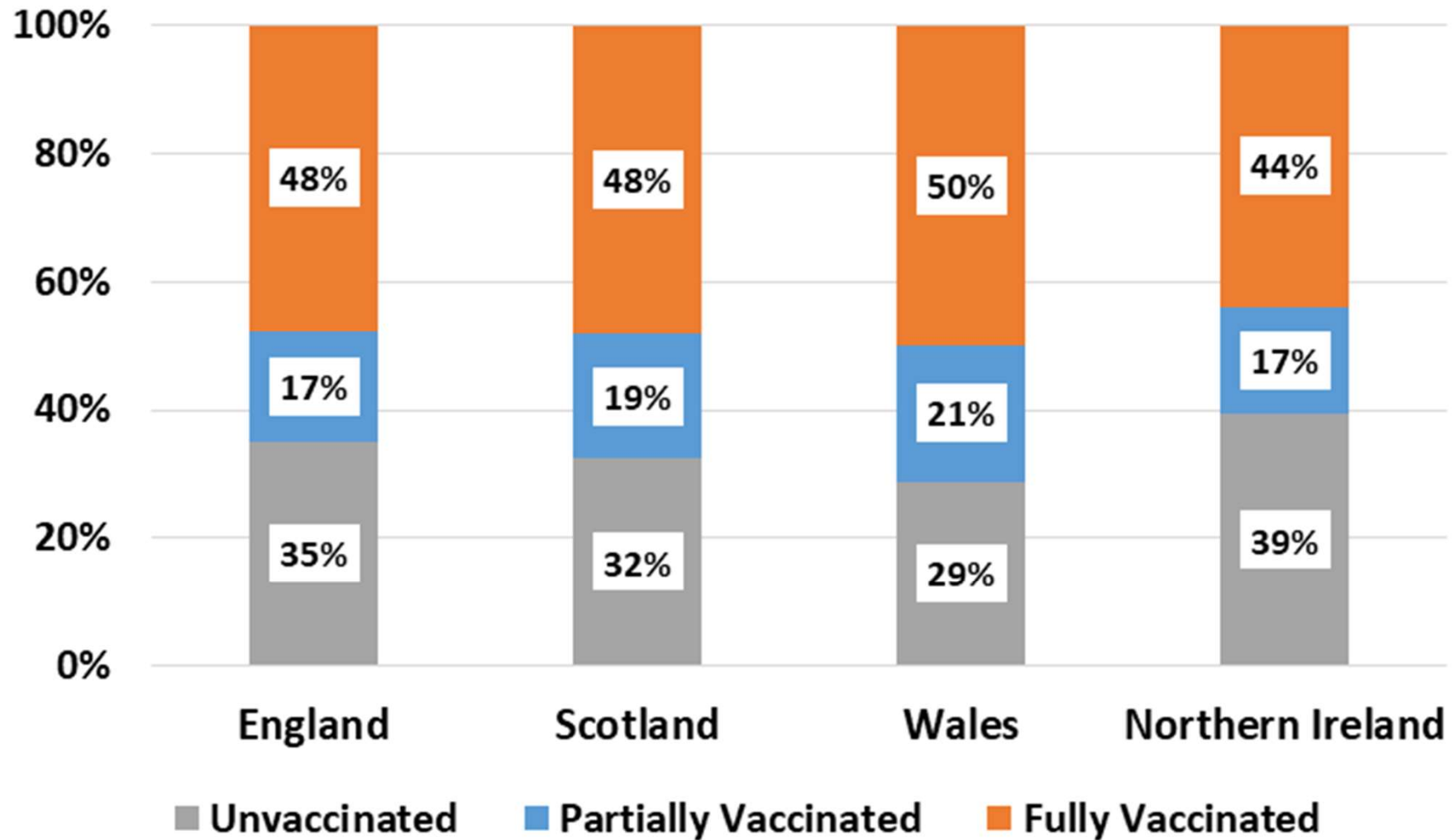
Number of Pupils in State Primary and Secondary Schools absent due to Covid-19 in England from 8 March to 17 June



Source: [Attendance in education and early years settings during the coronavirus \(COVID-19\) outbreak, Week 23 2021 – Explore education statistics – GOV.UK \(explore-education-statistics.service.gov.uk\)](https://explore-education-statistics.service.gov.uk)

Chart prepared by Bob Hawkins

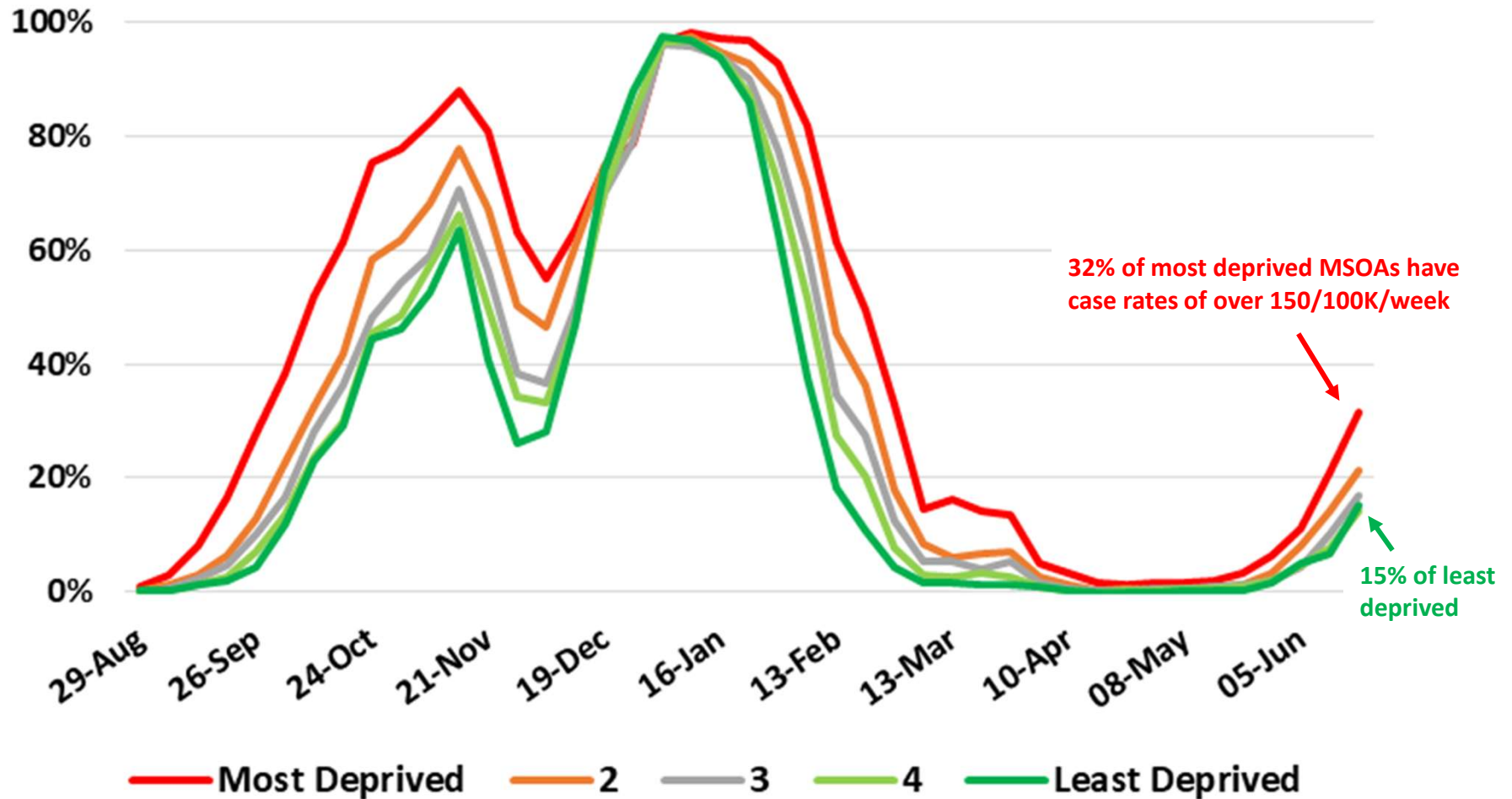
Percent of Total Population Unvaccinated (no dose given), Partially Vaccinated (1 dose) and Fully Vaccinated (2 doses) as at 23 Jun



Data from <https://coronavirus.data.gov.uk>

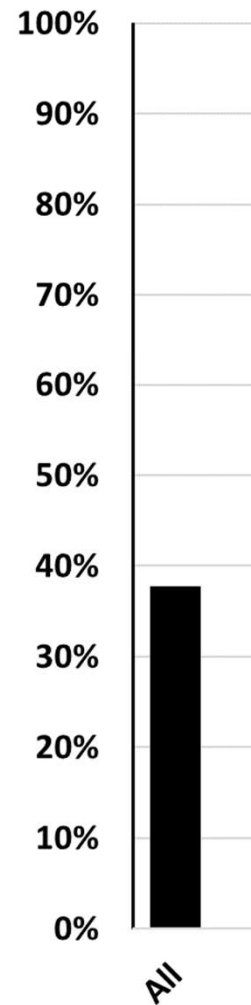
Chart prepared by Bob Hawkins

Percentage of English MSOAs with more than 150 Cases per 100,000 people per week: 29 August 2020 to 19 June 2021



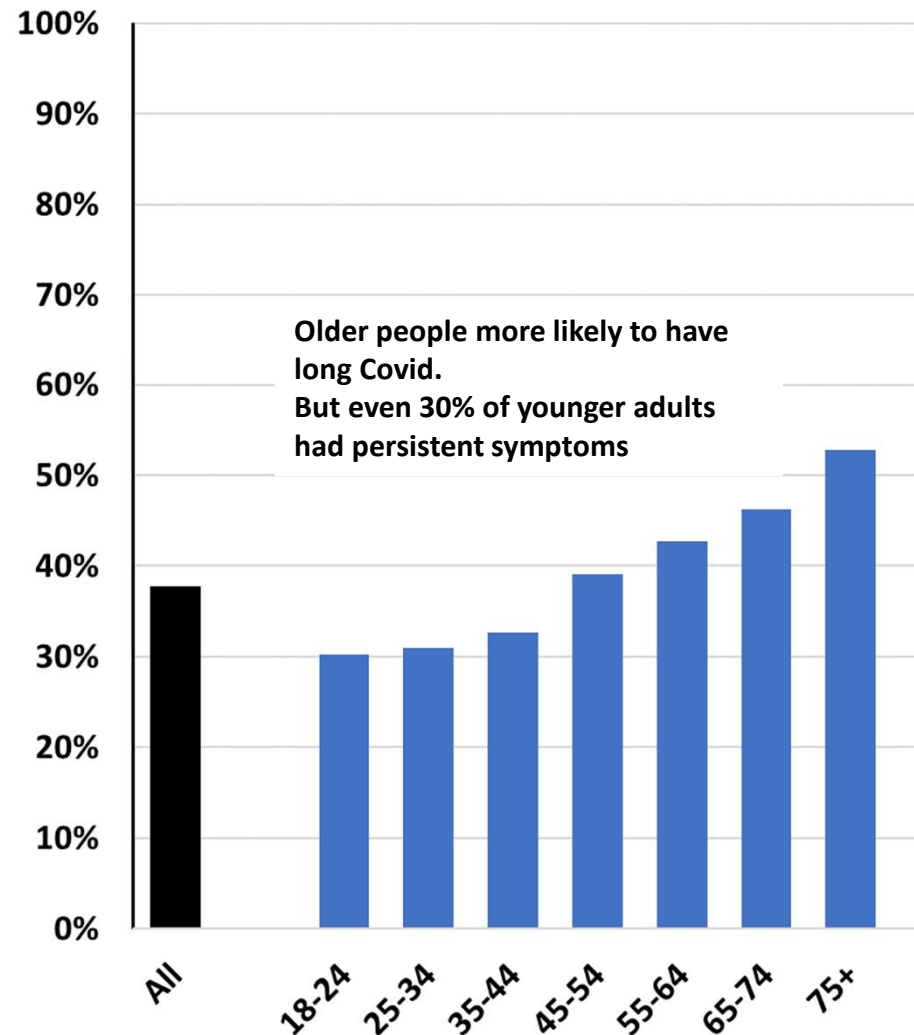
Source: <https://coronavirus.data.gov.uk/> and deprivation data provided by Tom Worth.
Chart prepared by Bob Hawkins

Long Covid: Proportion of 76,155 adults in England who had Covid between September and February who had at least one symptom persisting for more than 12 weeks



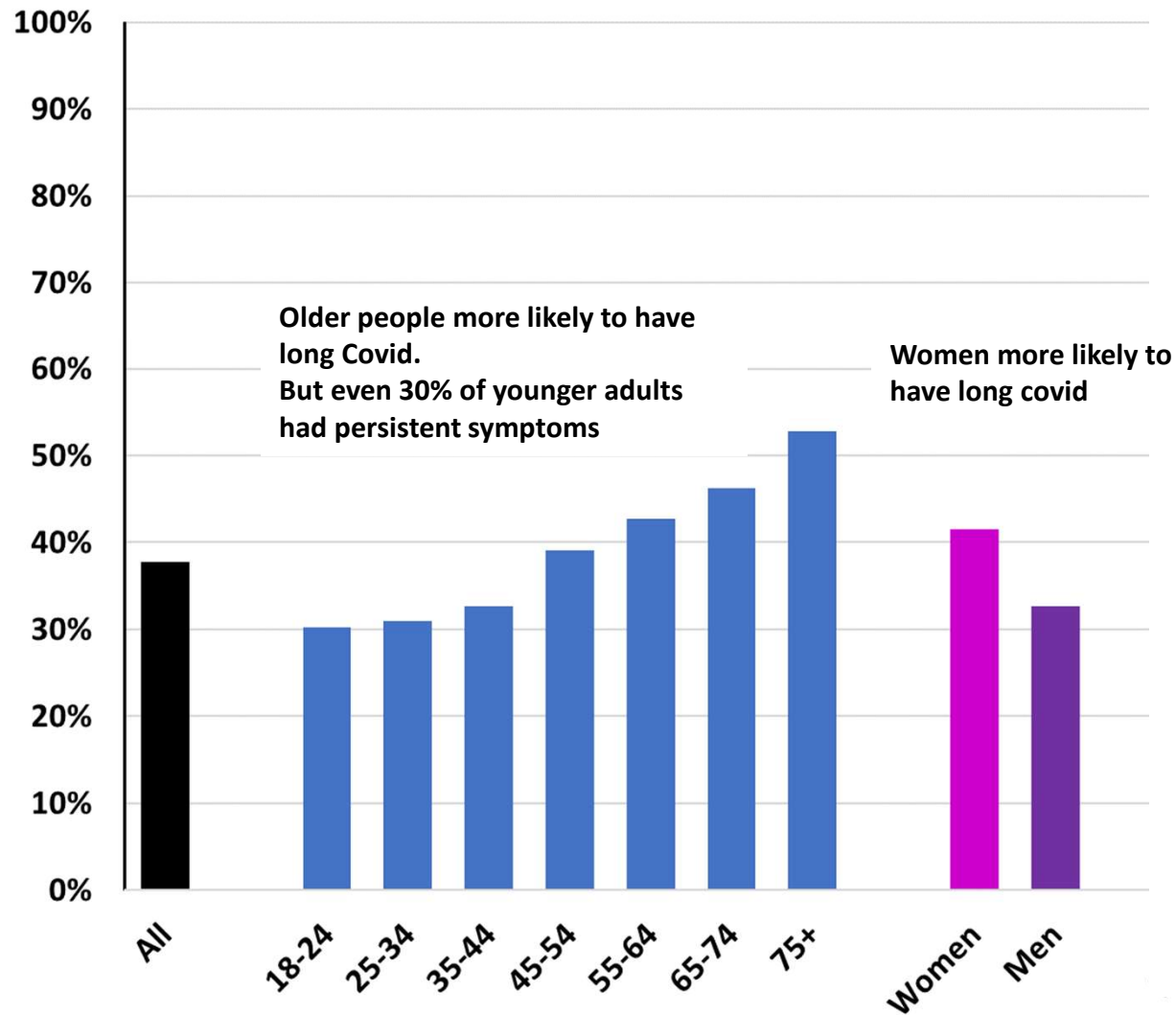
Data from Imperial College REACT study: https://spiral.imperial.ac.uk/bitstream/10044/1/89844/2/REACT_long_covid_paper_FINAL.pdf

Long Covid: Proportion of 76,155 adults in England who had Covid between September and February who had at least one symptom persisting for more than 12 weeks



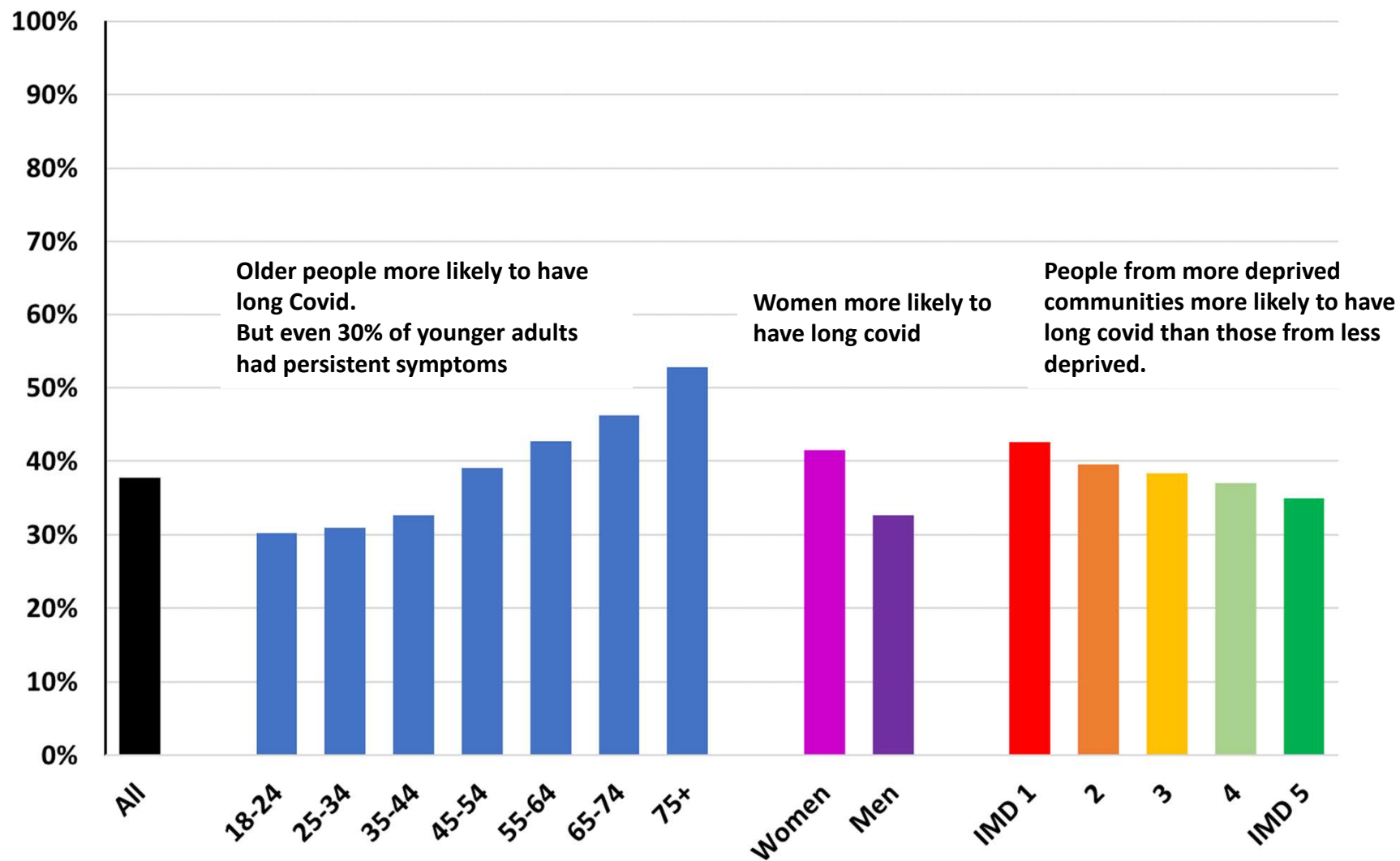
Data from Imperial College REACT study: https://spiral.imperial.ac.uk/bitstream/10044/1/89844/2/REACT_long_covid_paper_FINAL.pdf

Long Covid: Proportion of 76,155 adults in England who had Covid between September and February who had at least one symptom persisting for more than 12 weeks



Data from Imperial College REACT study: https://spiral.imperial.ac.uk/bitstream/10044/1/89844/2/REACT_long_covid_paper_FINAL.pdf

Long Covid: Proportion of 76,155 adults in England who had Covid between September and February who had at least one symptom persisting for more than 12 weeks



Summary

Cases continue to rise, now going up in every nation except NI which is flat.

Although driven by hotspots, cases are going up in most areas of England, Scotland and Wales.

Hospitalisations and deaths are rising but are still at low levels.

Vaccination going well but slowing down. Still over 50% of the population not fully protected.

Cases are highest in younger people and more deprived communities.

More and more evidence emerging of the burden of long covid, with significant rates in the young, more deprived and women.

“Living with” high rates of infection: disrupts lives, disrupts education, creates a large burden of long covid and provides more opportunity for further dangerous variants to arise.

This is not OK.