

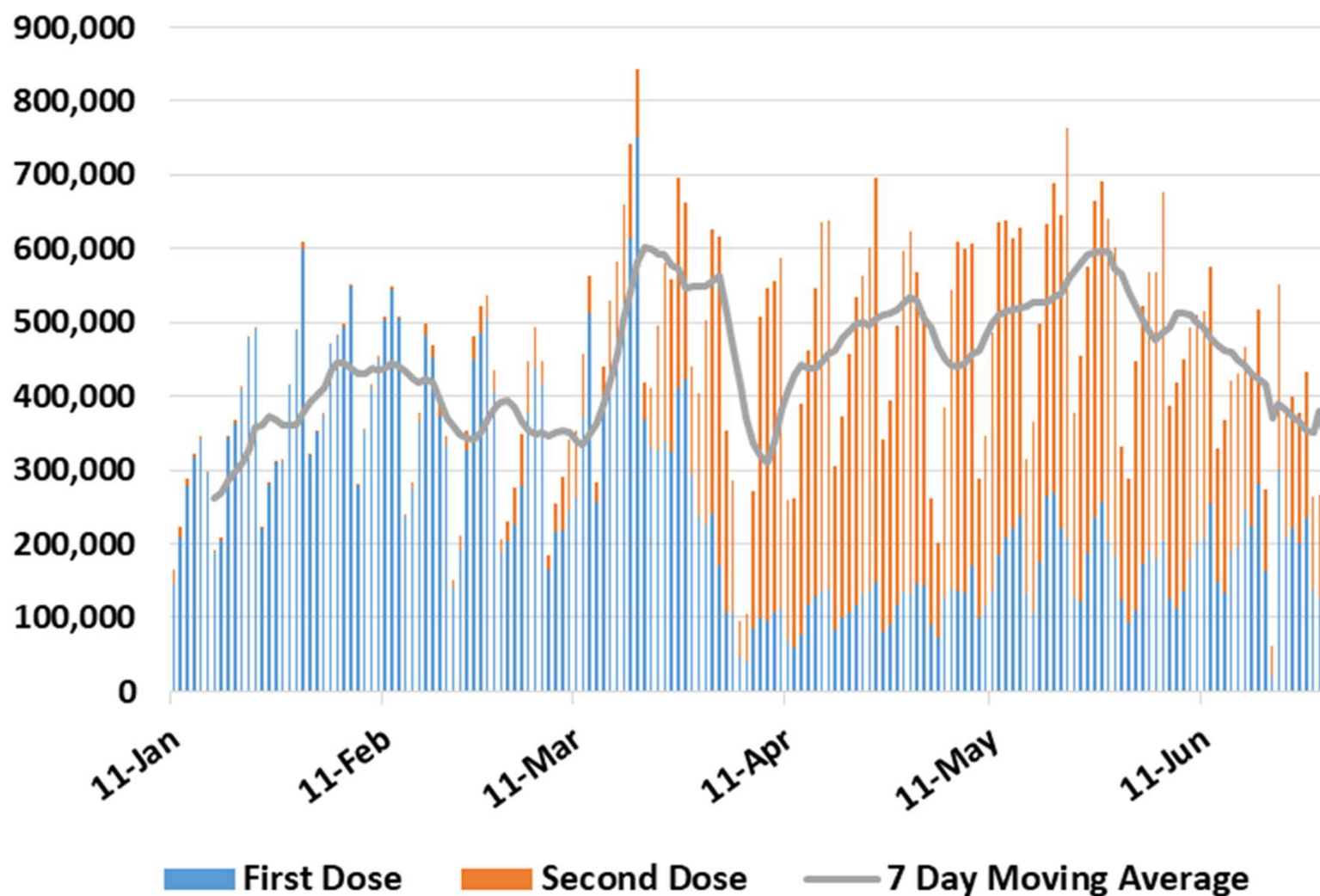
Not good.

1. Vaccinations
2. Cases
3. Hospitalisations & Deaths
4. Cases: who, where and why should we care

With many thanks to Bob Hawkins for his help in collating the data

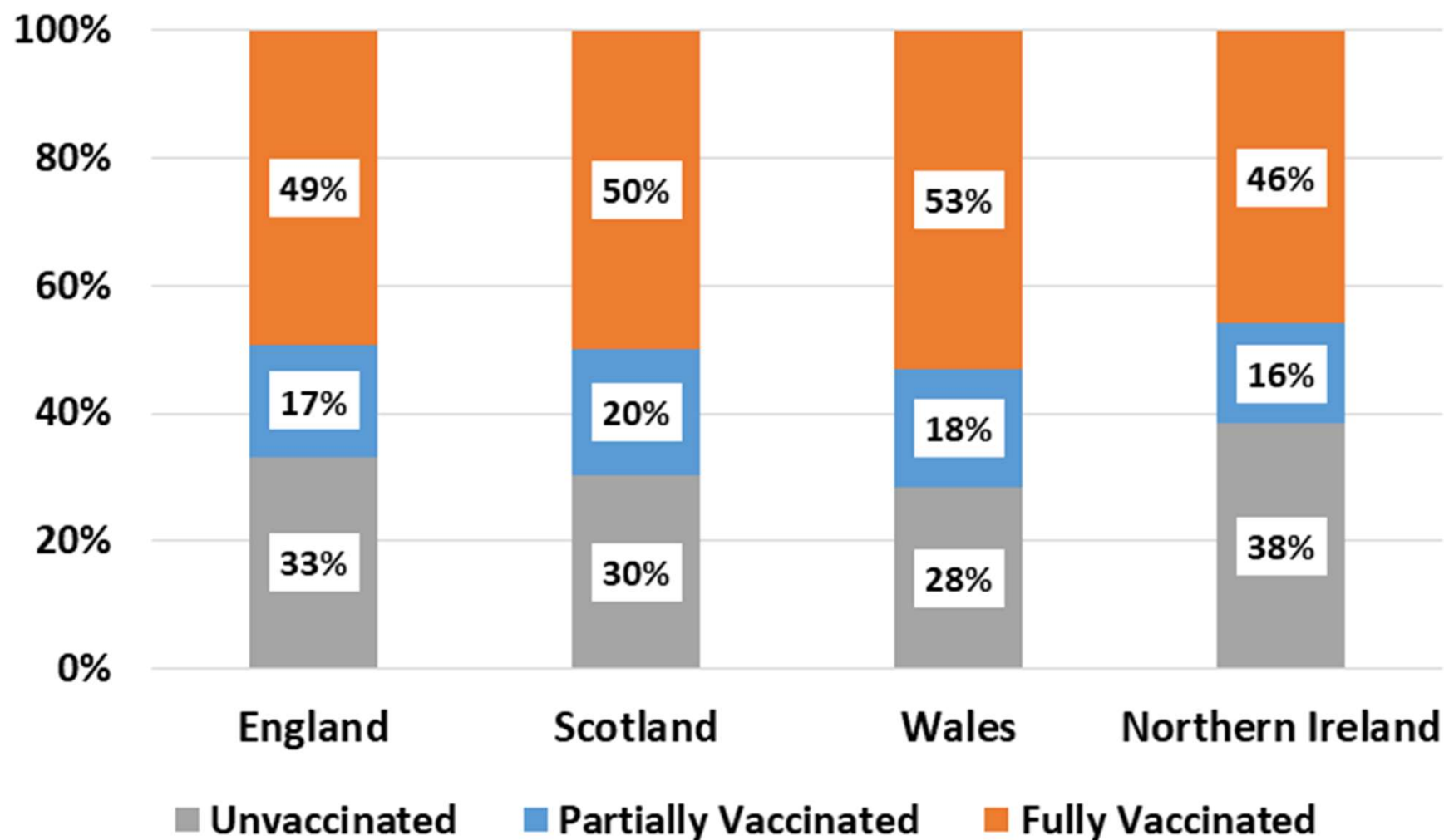
Vaccination data

Number of 1st and 2nd doses given by day in the UK to 30th June



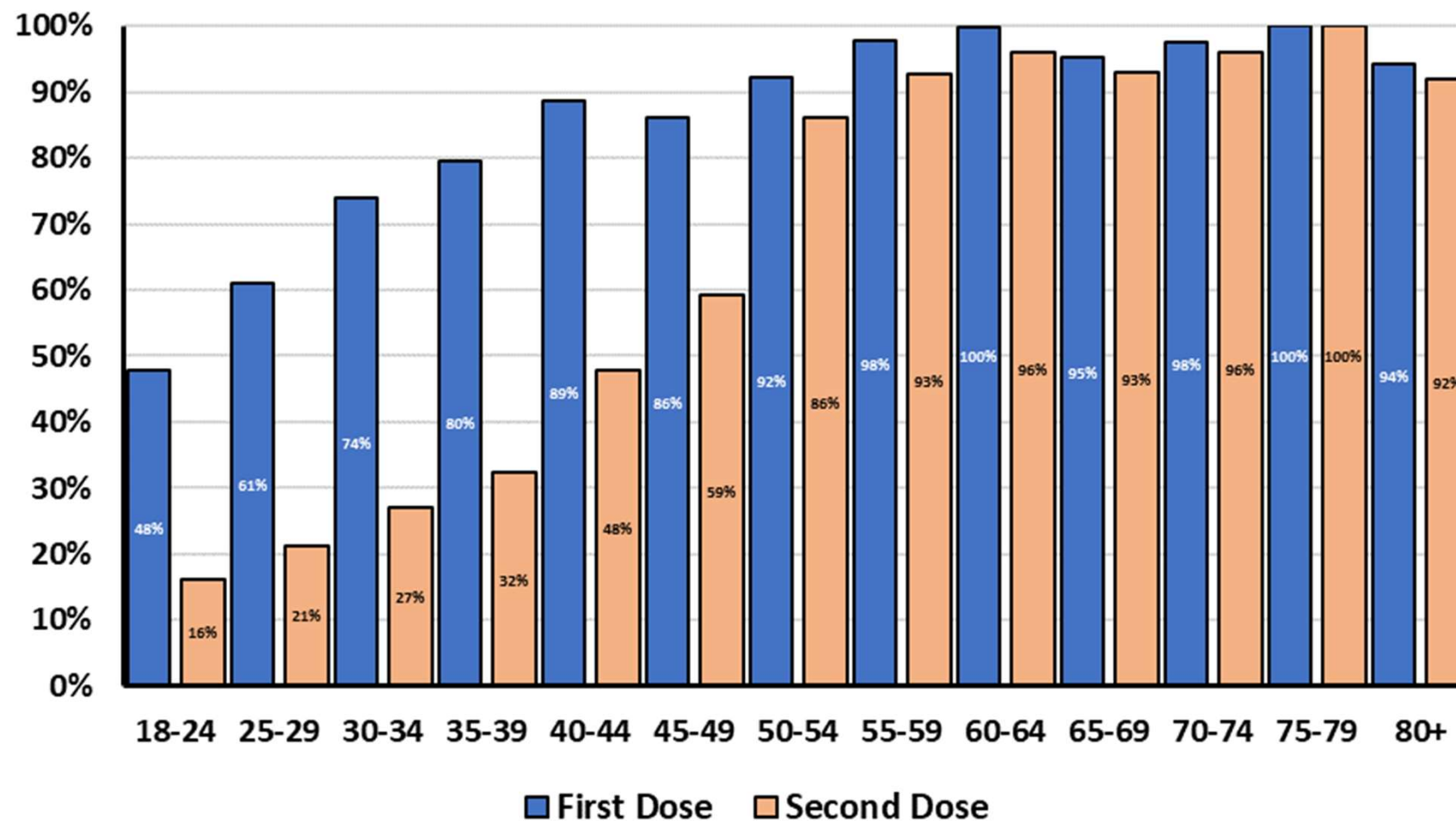
Data from <https://coronavirus.data.gov.uk/>
Thanks to Bob Hawkins for the chart

Percentage of Total Population Unvaccinated (no dose given), Partially Vaccinated (1 dose) and Fully Vaccinated (2 doses) as at Jun 30



Data from <https://coronavirus.data.gov.uk/>
Thanks to Bob Hawkins for the chart

First and Second Dose Coverage by Age for England to 27th June

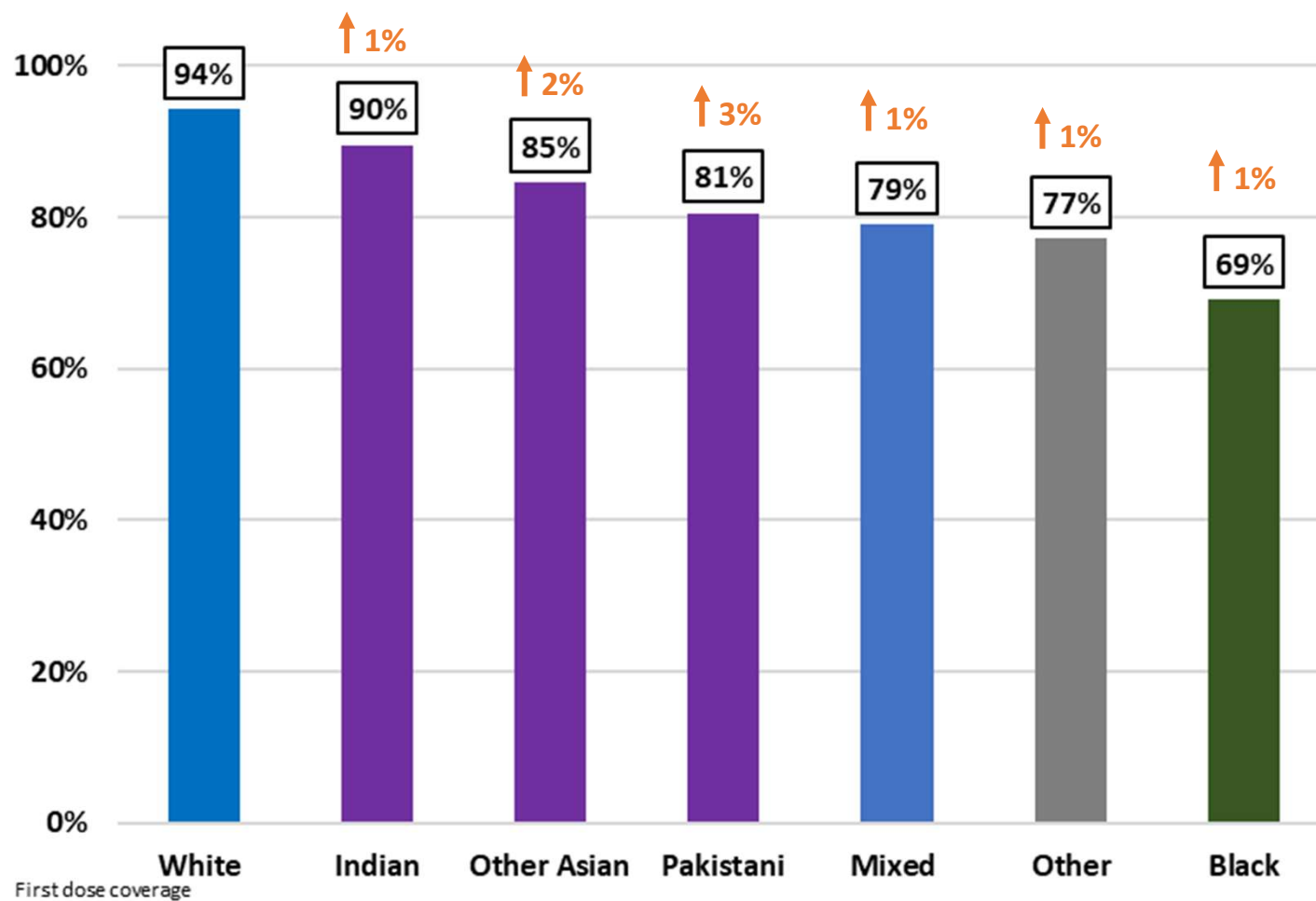


Data from <https://www.england.nhs.uk/statistics/statistical-work-areas/covid-19-vaccinations>

Thanks to Bob Hawkins for the chart

First dose coverage for over 50s by ethnicity for England to 27th June

Percentage change in last month

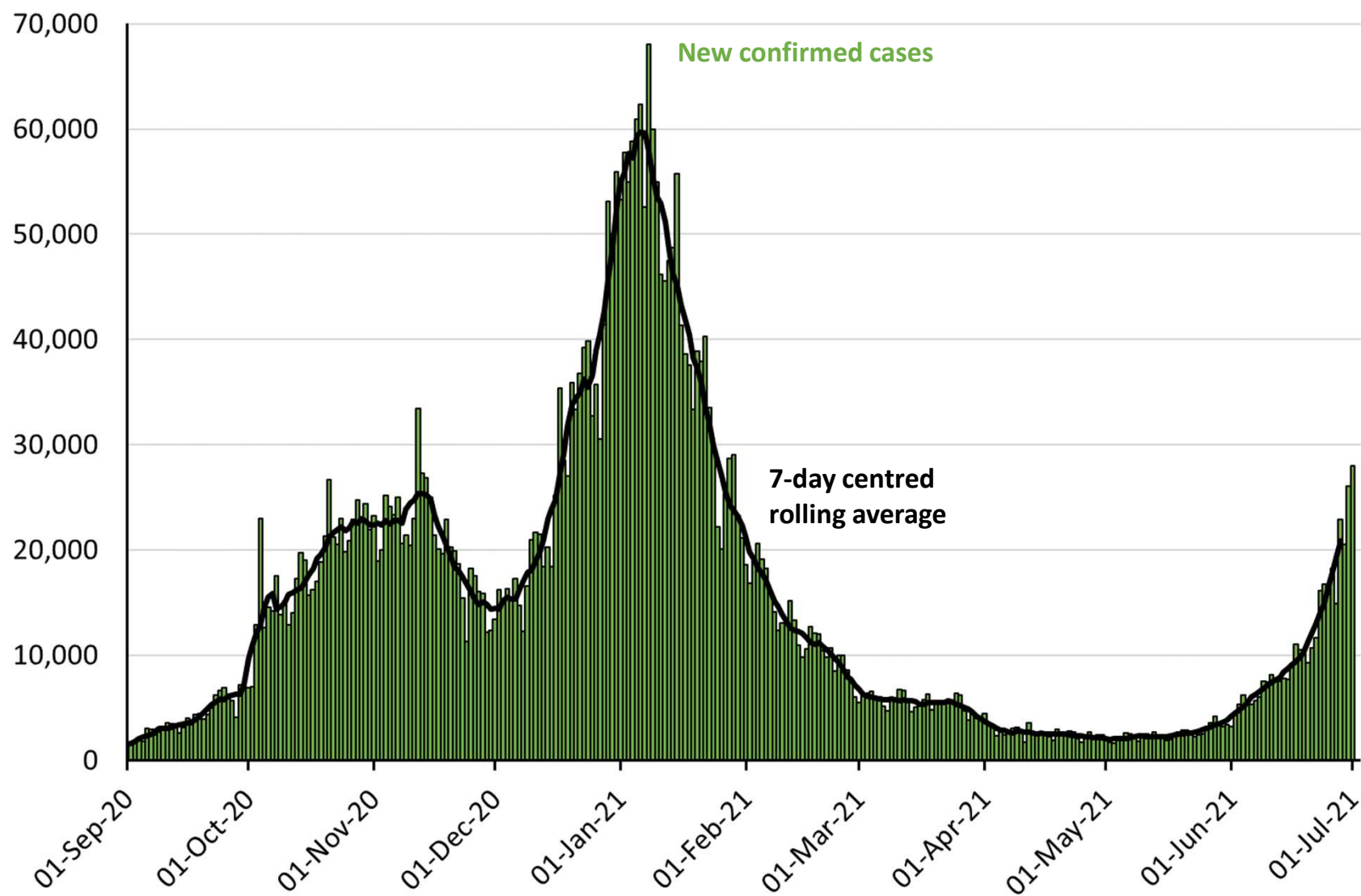


Data from <https://www.gov.uk/government/statistics/national-flu-and-covid-19-surveillance-reports>

Thanks to Bob Hawkins for the chart

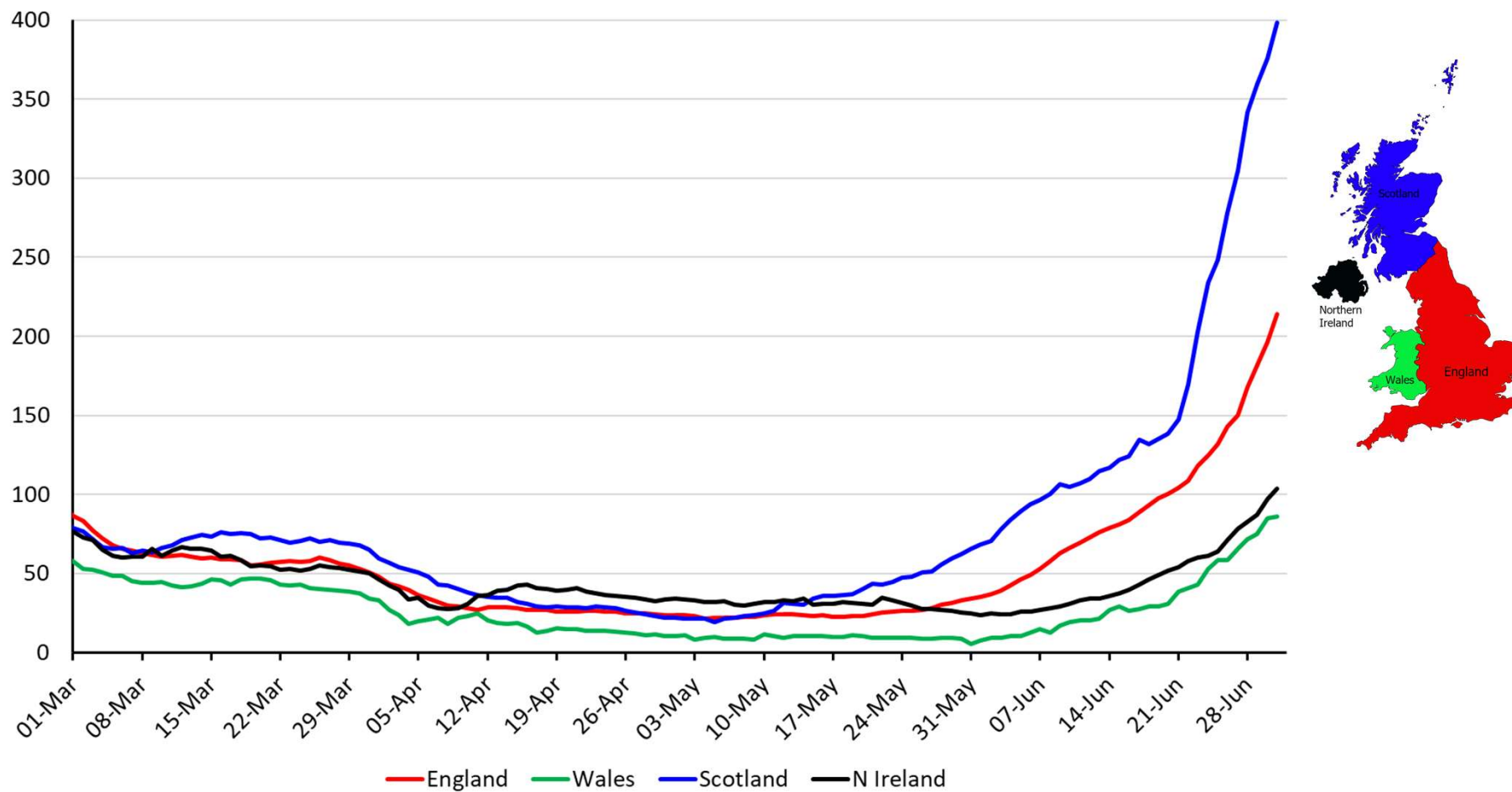
Cases

Number of new UK confirmed COVID-19 cases by reported date (people who have had a positive test)



Number of cases per 100,000 people per week for UK nations by date reported to 1st July

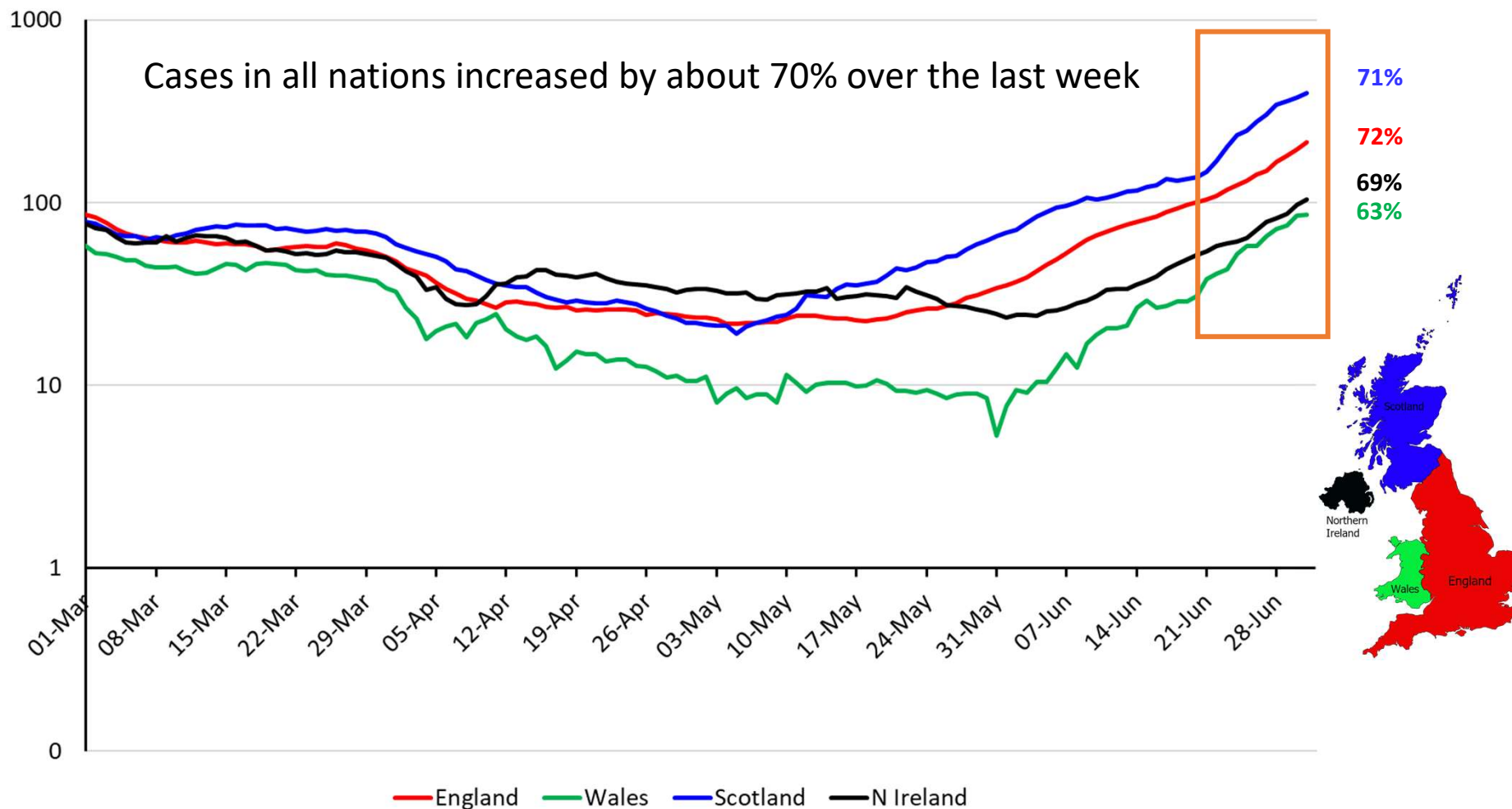
Number of cases per 100,000 people per week



Data from <https://coronavirus.data.gov.uk>

Number of cases per 100,000 people per week for UK nations by date reported to 1st July

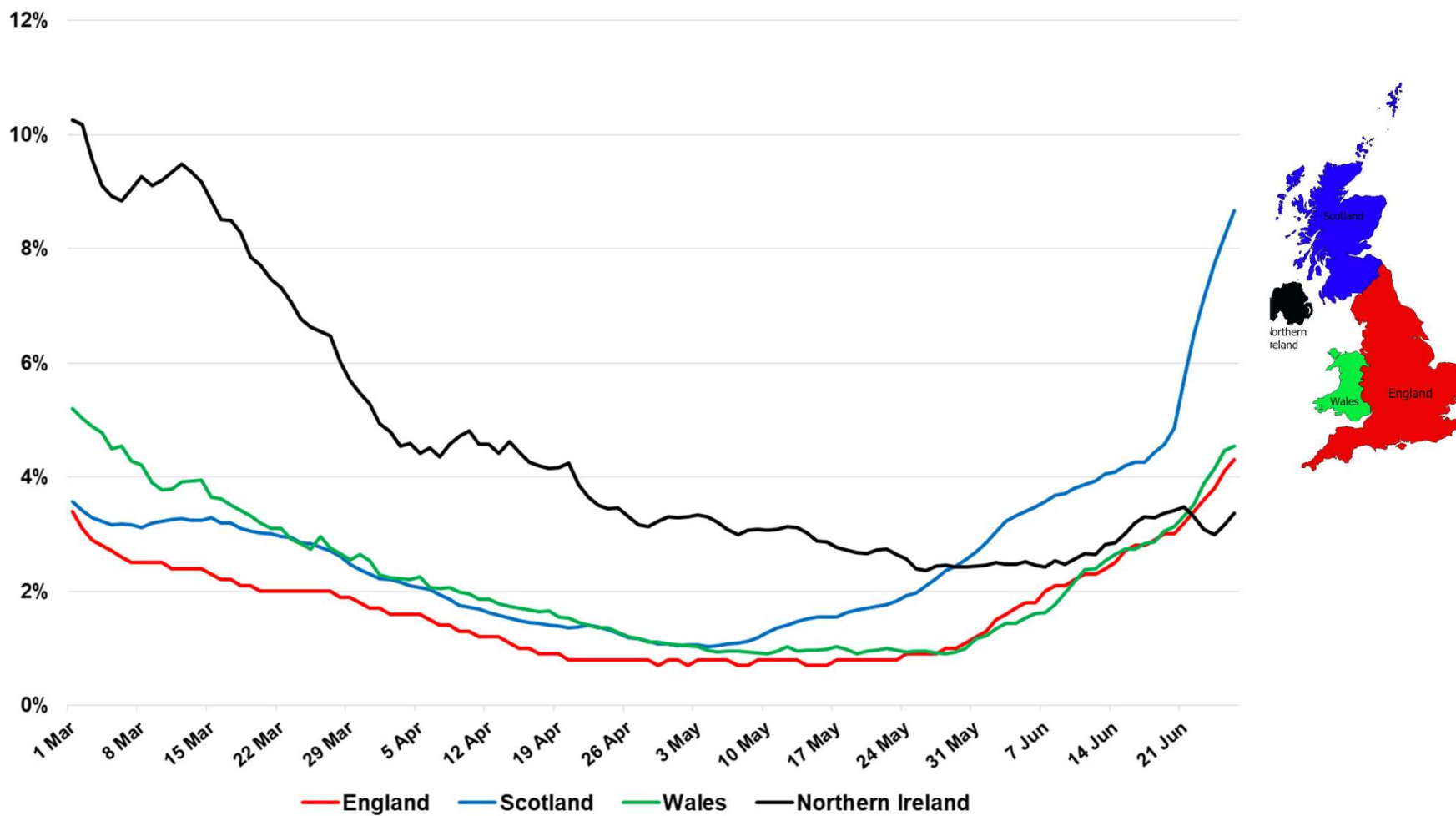
Number of cases per 100,000 people per week



Data from <https://coronavirus.data.gov.uk>

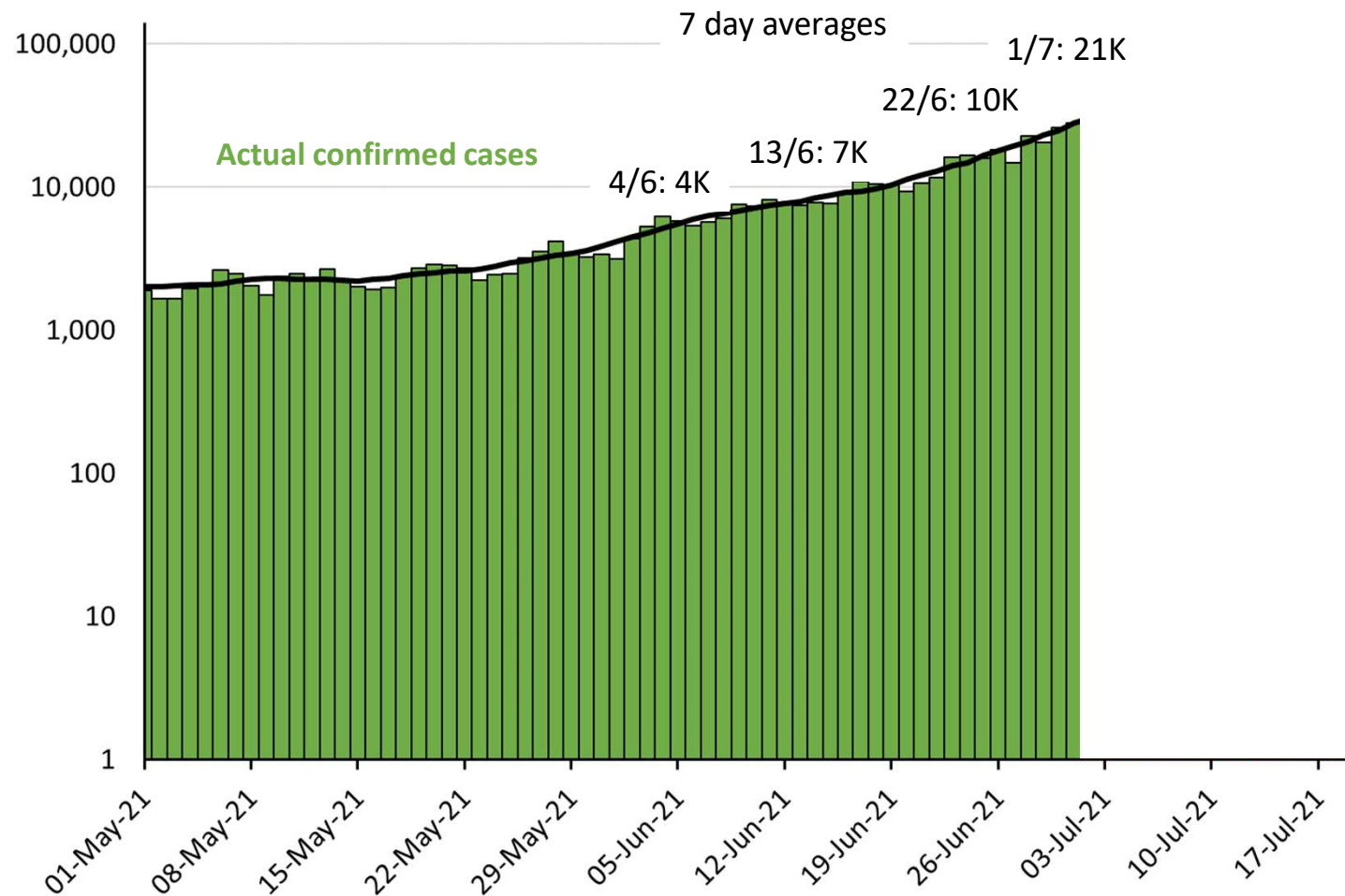
Positivity rates for UK nations by date of test to 26th June

Percentage of people tested who are positive

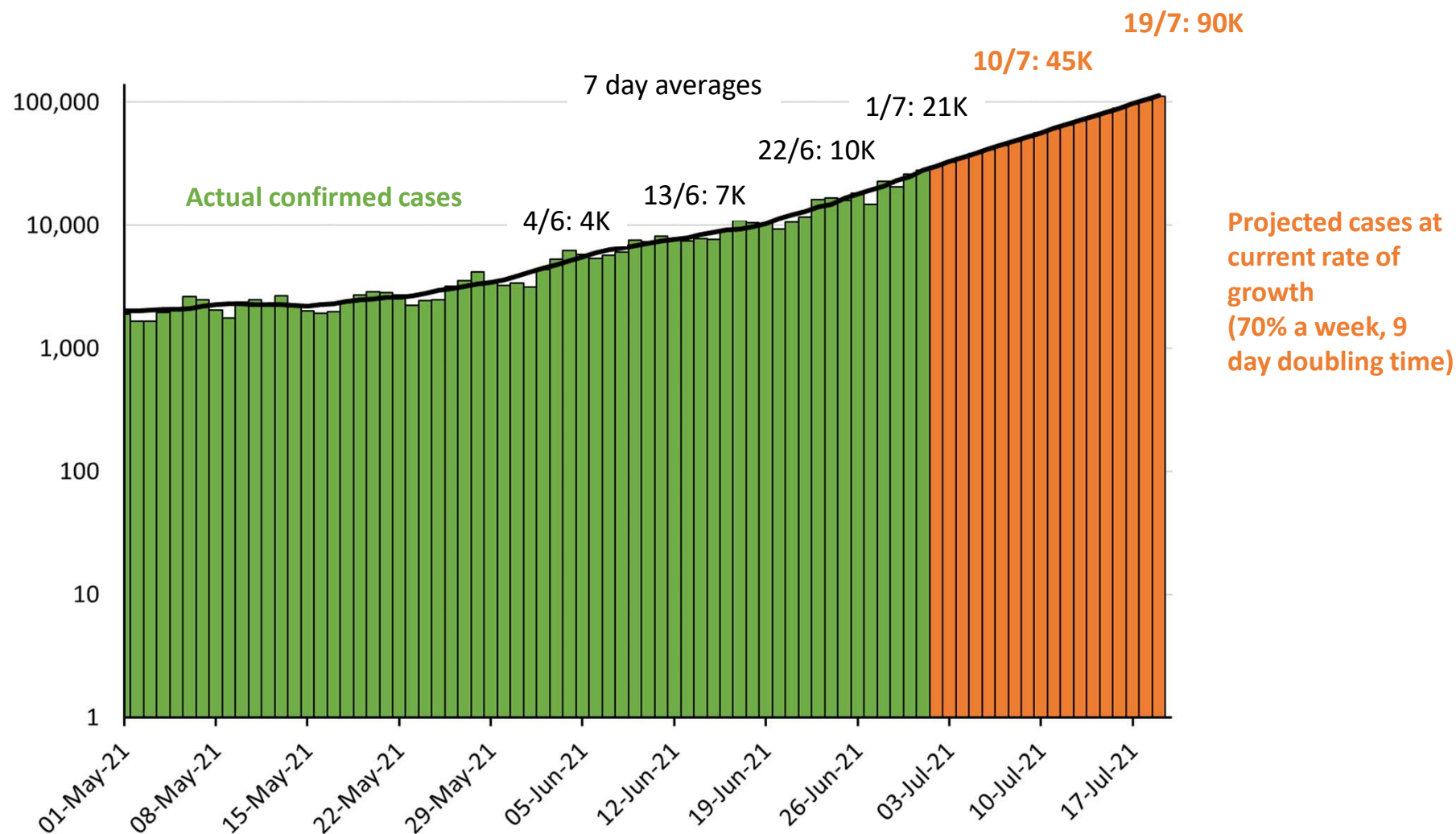


Data from <https://coronavirus.data.gov.uk>
Thanks to Bob Hawkins for the chart

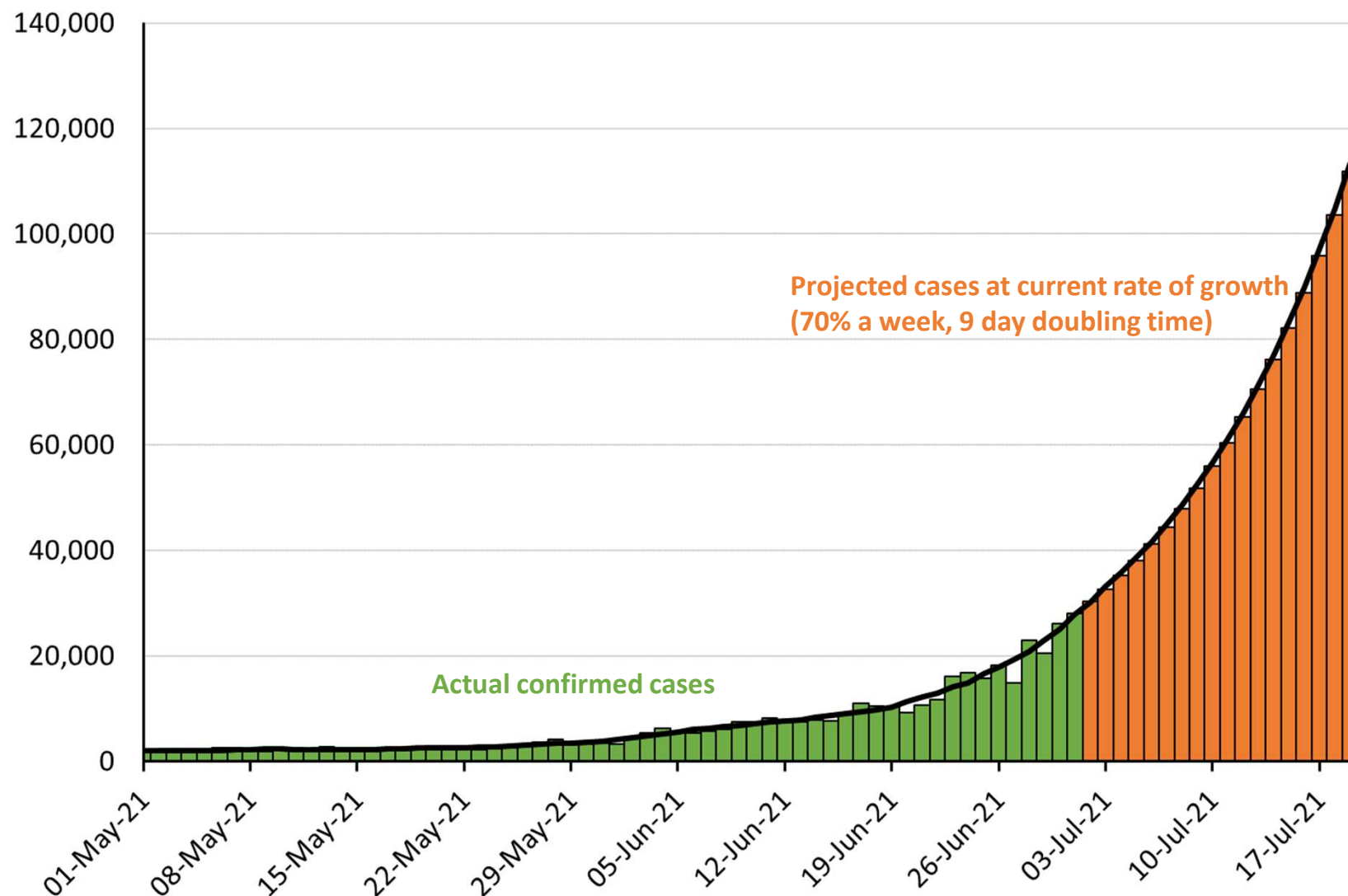
Projections to 19 July based on recent growth rates (70% a week)



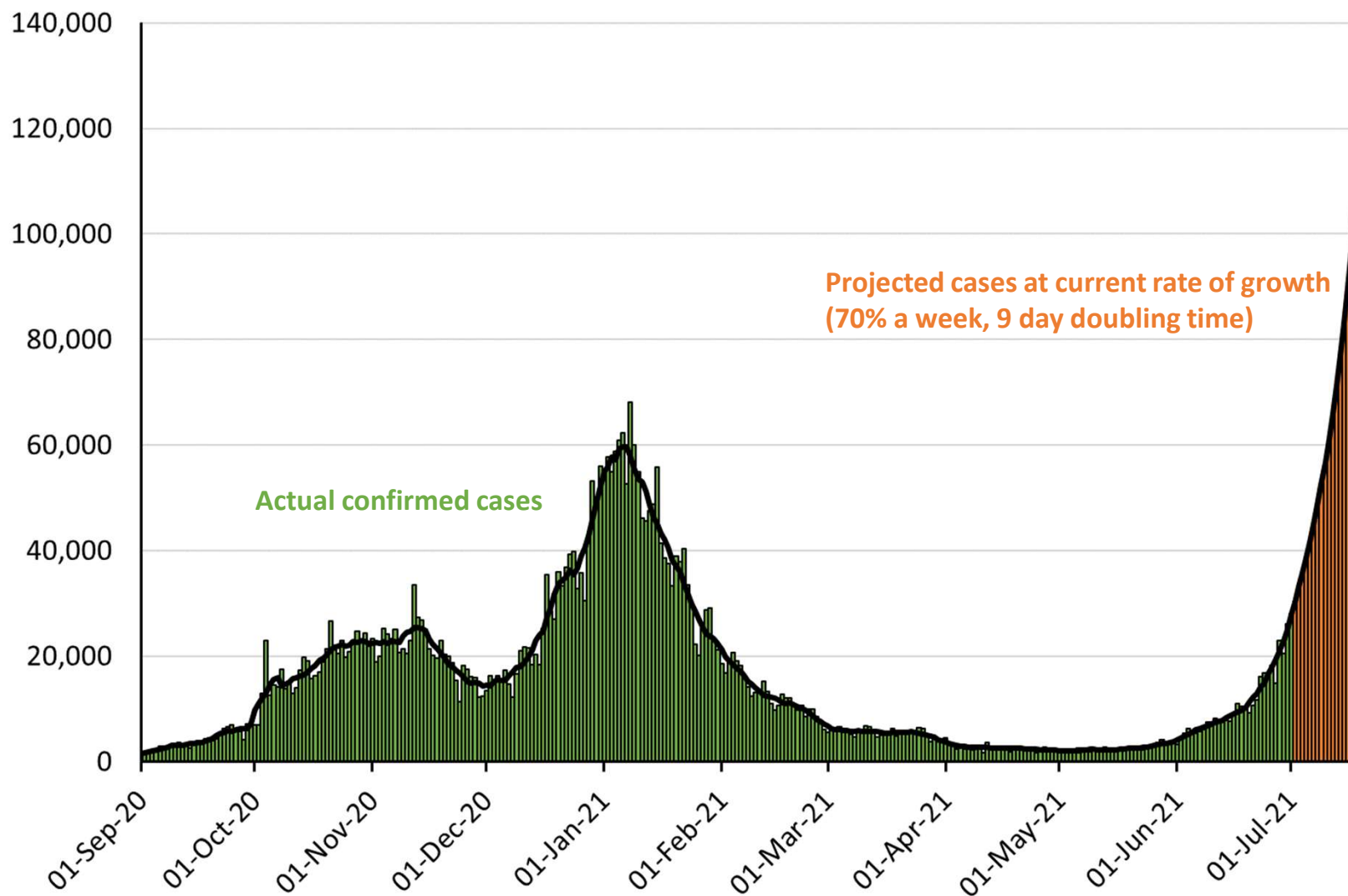
Projections to 19 July based on recent growth rates (70% a week)



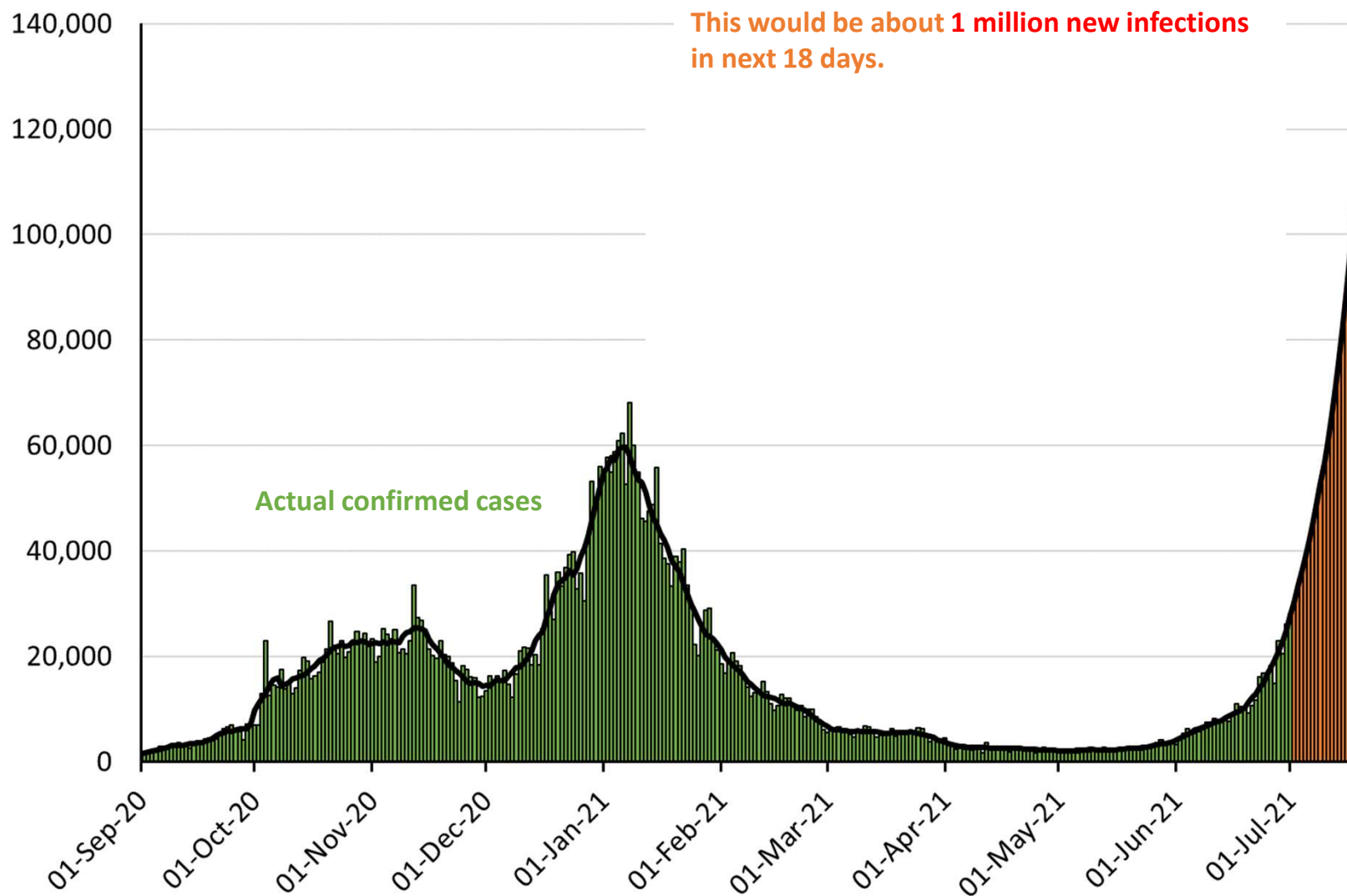
Projections to 19 July based on recent growth rates (70% a week)



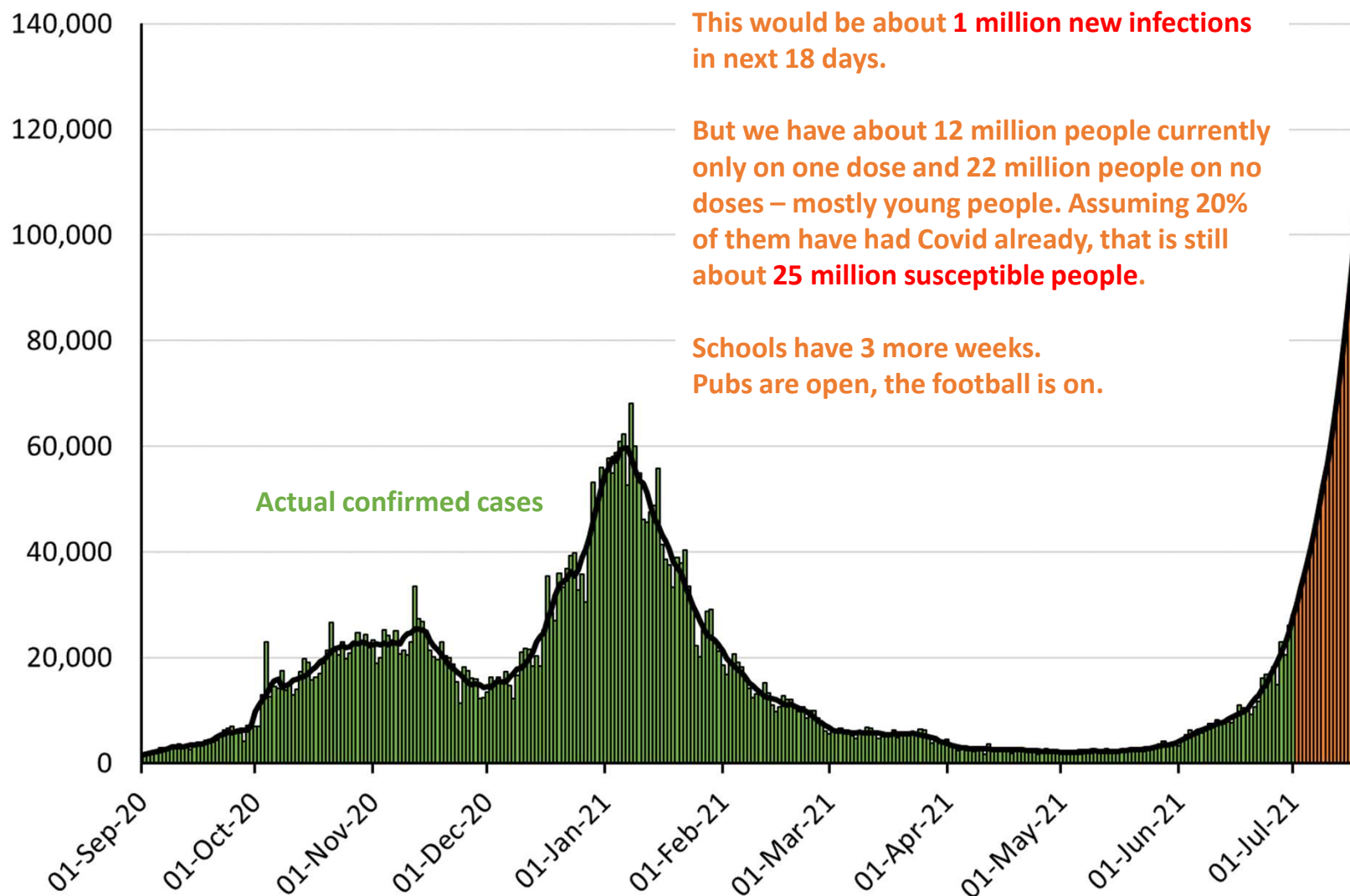
Projections to 19 July based on recent growth rates



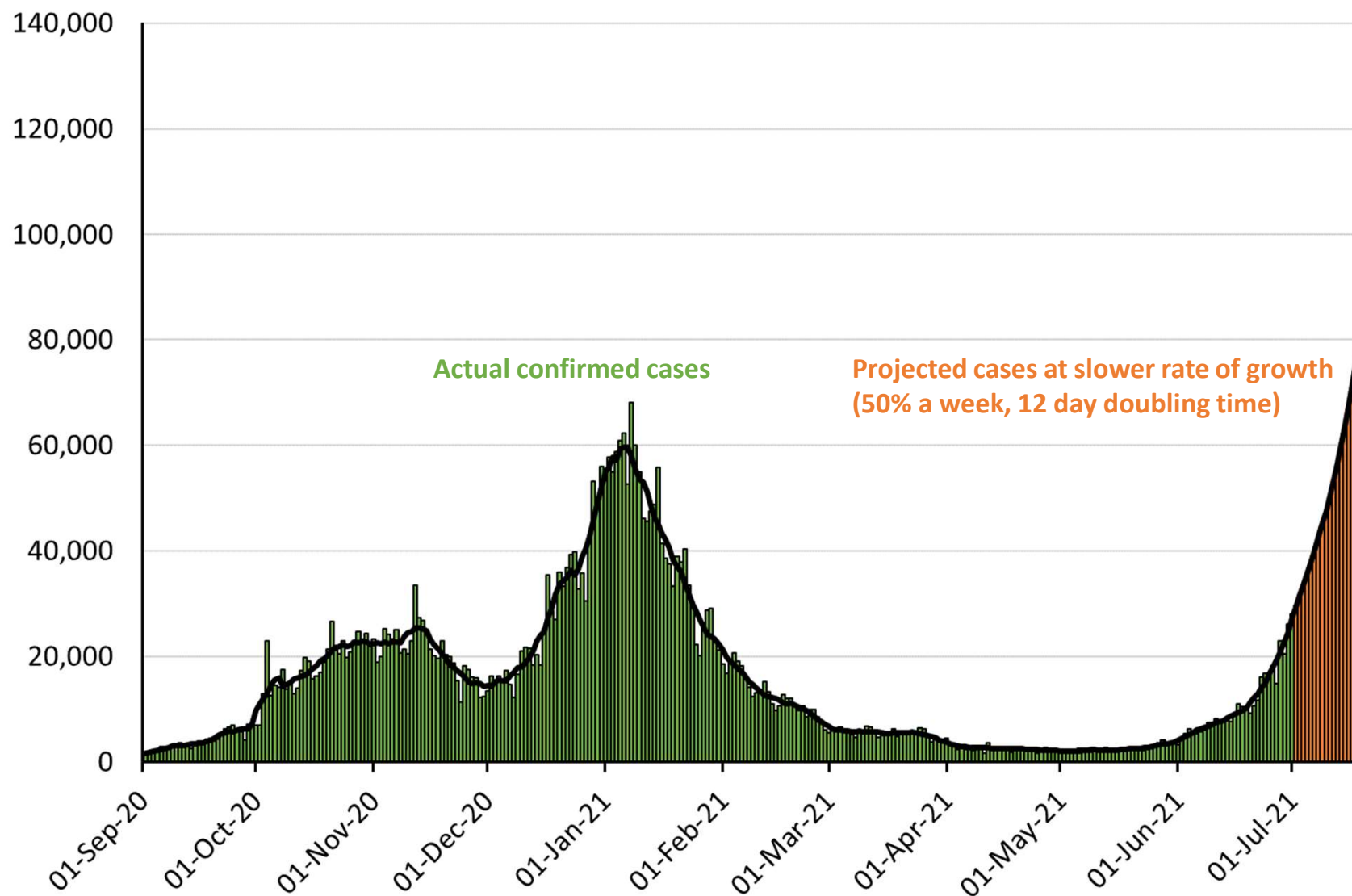
Projections to 19 July based on recent growth rates (70% a week)



Projections to 19 July based on recent growth rates (70% a week)

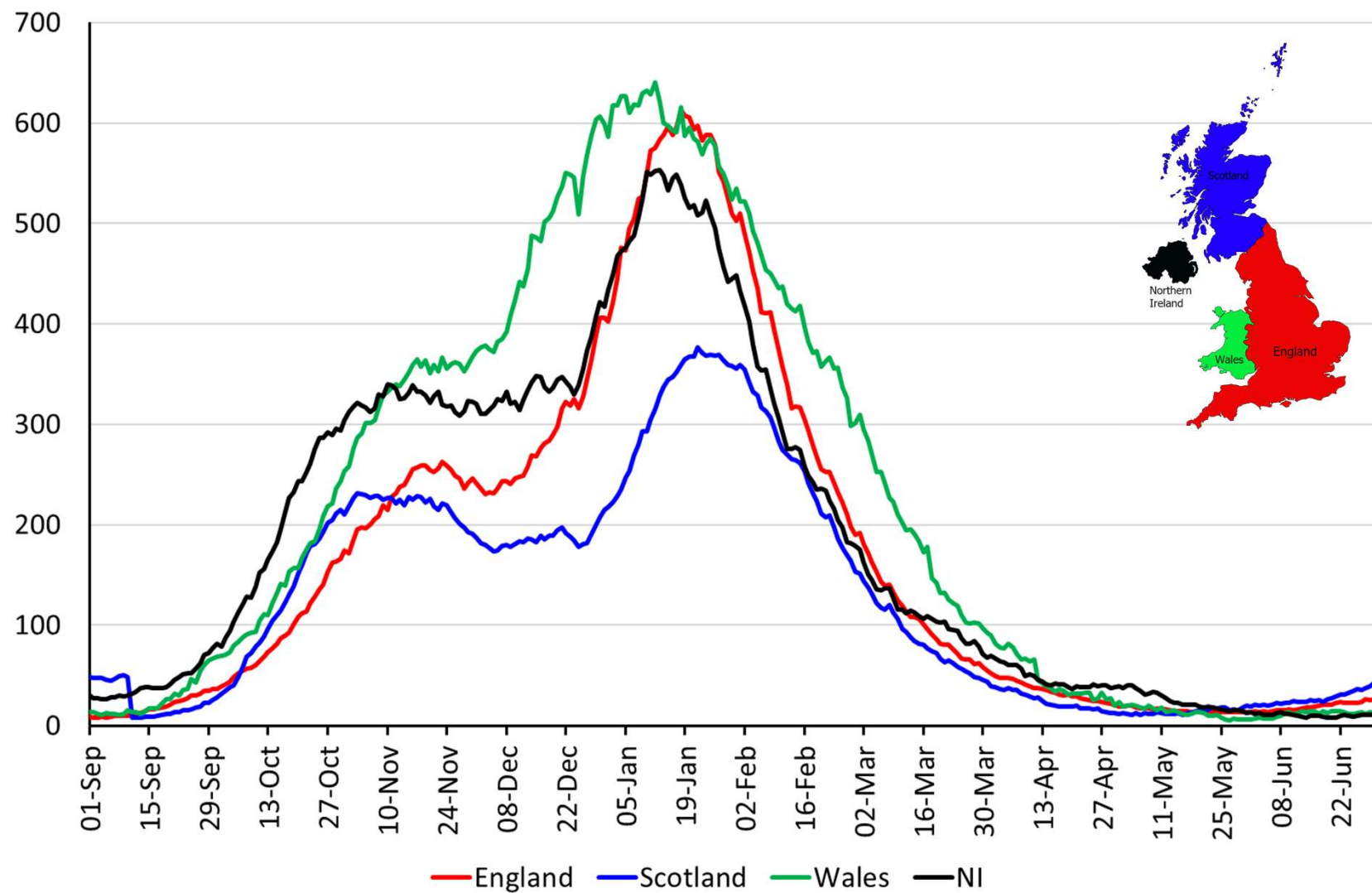


Projections to 19 July assuming slower growth of 50% a week

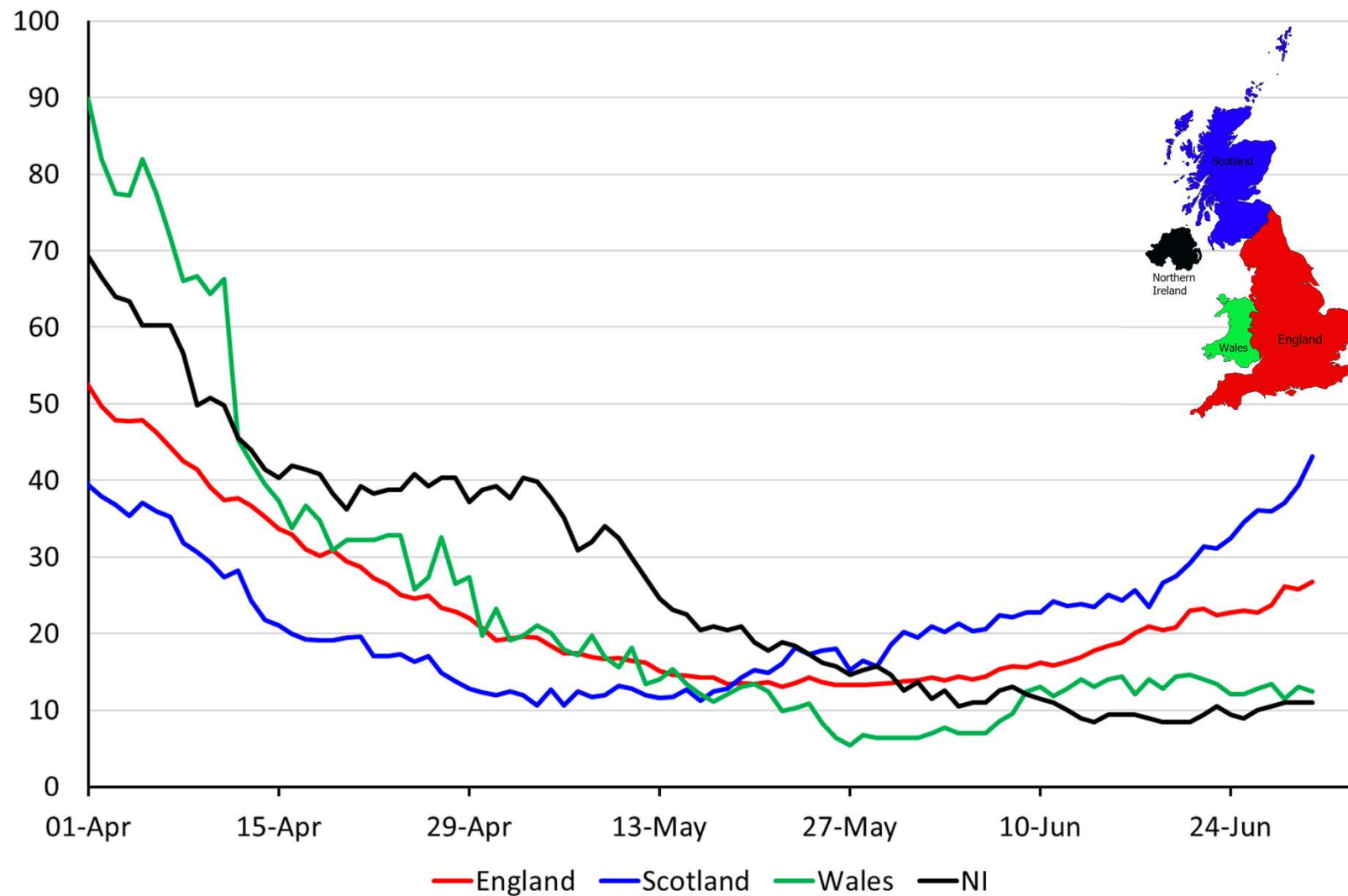


Hospitalisations and deaths

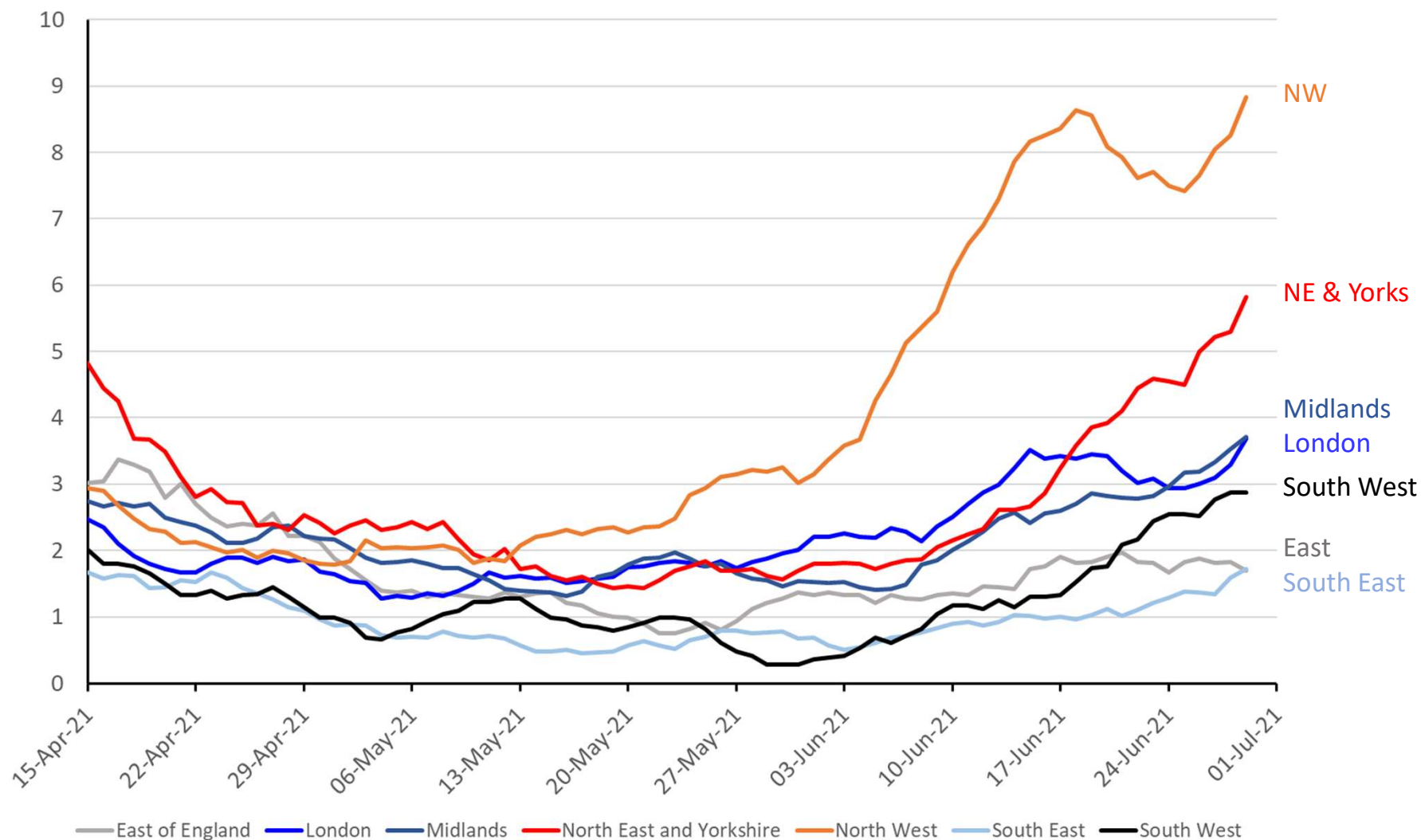
Number of people in hospital per million people – UK nations (daily 7 day average)



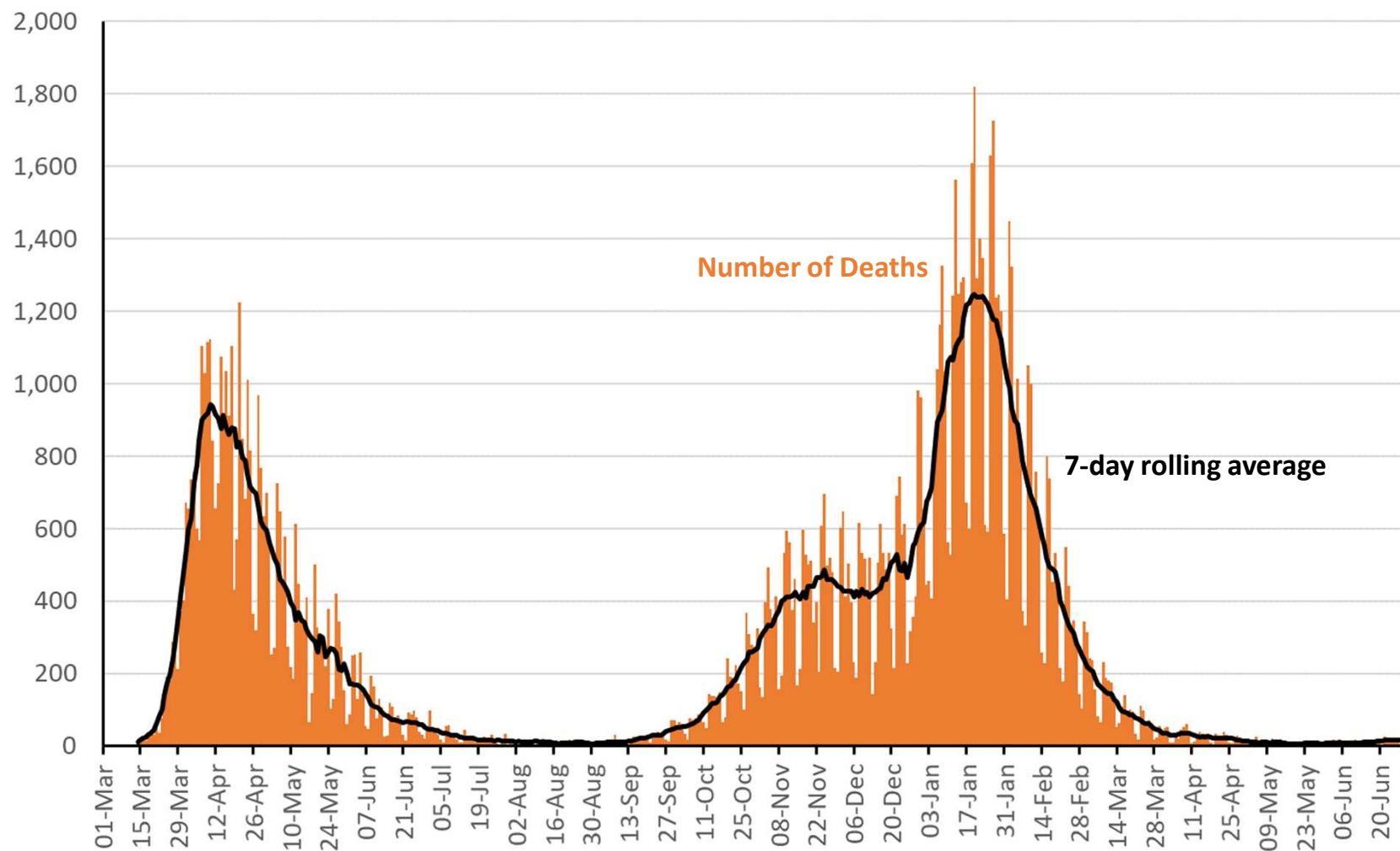
Number of people in hospital per million people – UK nations (daily 7 day average)



7-day average of daily number of new hospital admissions with COVID-19 per day per million people across different regions in England to 29th June

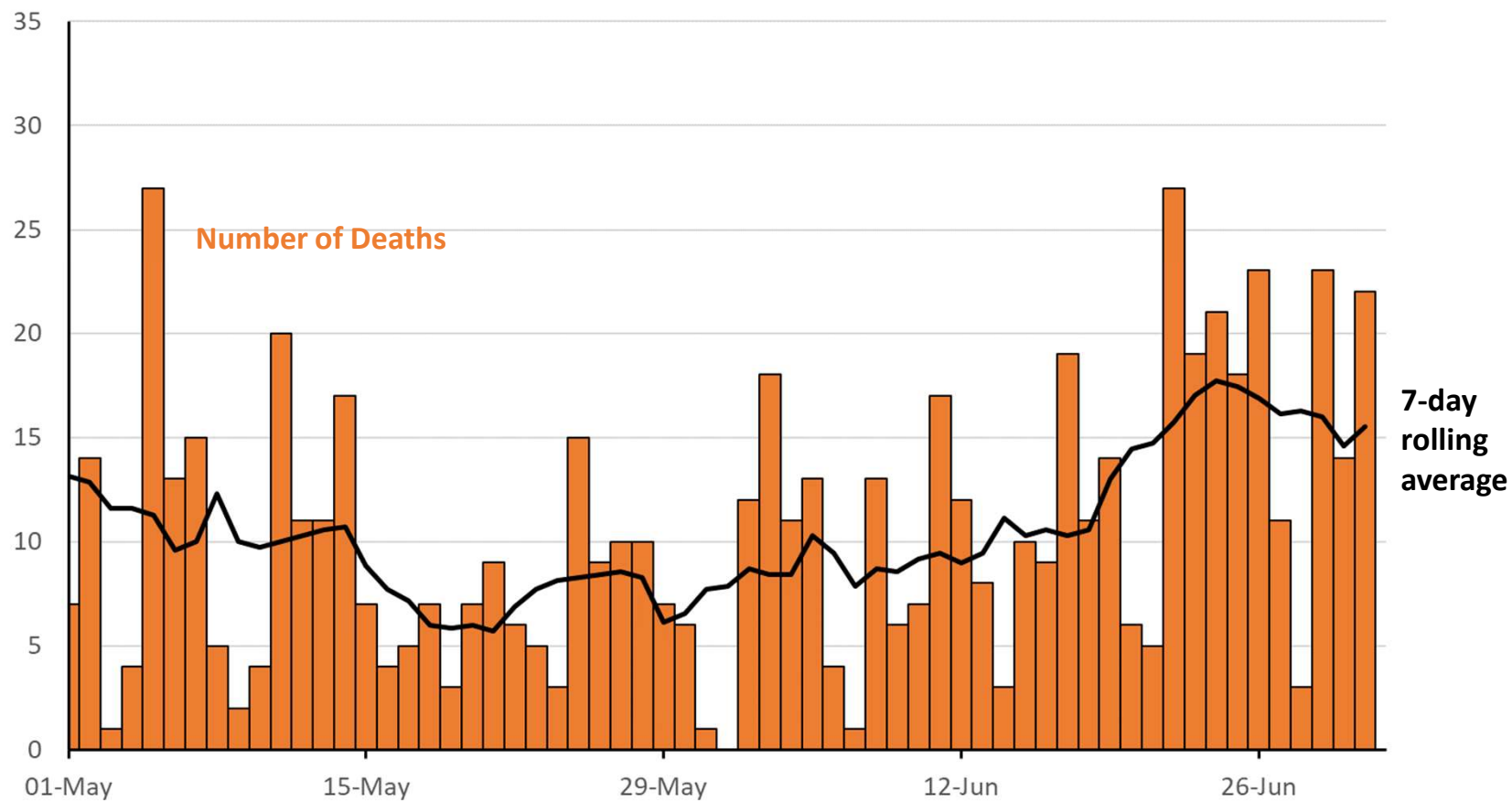


Number of deaths within 28 days of +ve COVID test reported per day across the UK to 1st July



Data from <https://coronavirus.data.gov.uk/>

Number of deaths within 28 days of +ve COVID test reported per day across the UK to 1st July

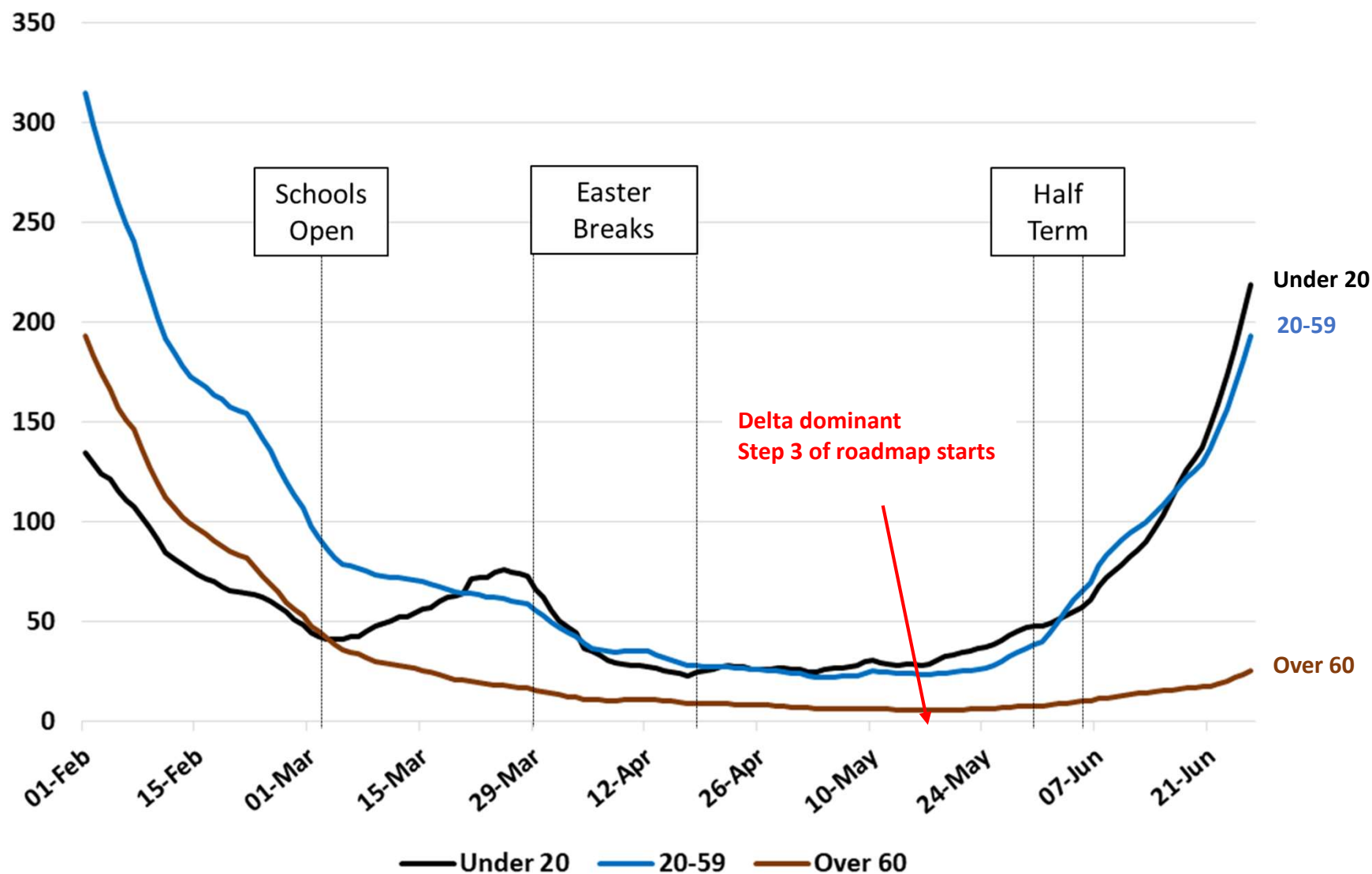


Data from <https://coronavirus.data.gov.uk/>

Cases – who and
where, and why
should we care?

Who

Age distribution of cases – Public Health England to 27th June



Data from <https://www.gov.uk/government/statistics/national-flu-and-covid-19-surveillance-reports>
Thanks to Bob Hawkins for the chart

Heat map of cases per 100,000 people per week by age group in England to 25 June

Age range	Cases per 100,000 per week for week ending											18-Jun	25-Jun	Age range
	02-Apr	09-Apr	16-Apr	23-Apr	30-Apr	07-May	14-May	21-May	28-May	04-Jun	11-Jun			
0 to 4	23	18	16	14	14	14	16	17	20	21	27	34	46	0 to 4
5 to 9	42	30	23	21	23	24	29	36	43	47	48	66	109	5 to 9
10 to 14	81	56	42	44	46	48	52	55	70	82	94	129	203	10 to 14
15 to 19	68	55	49	47	45	42	47	54	68	98	152	220	324	15 to 19
20 to 29	48	41	41	36	35	32	34	34	43	77	154	225	316	20 to 29
30 to 39	59	49	44	38	35	31	34	37	42	60	87	102	129	30 to 39
40 to 59	53	44	39	32	29	28	29	30	34	44	62	74	101	40 to 59
50 to 59	37	30	26	20	19	18	19	20	23	29	40	49	63	50 to 59
60 plus	14	12	12	10	9	8	7	7	8	10	13	17	21	60 plus

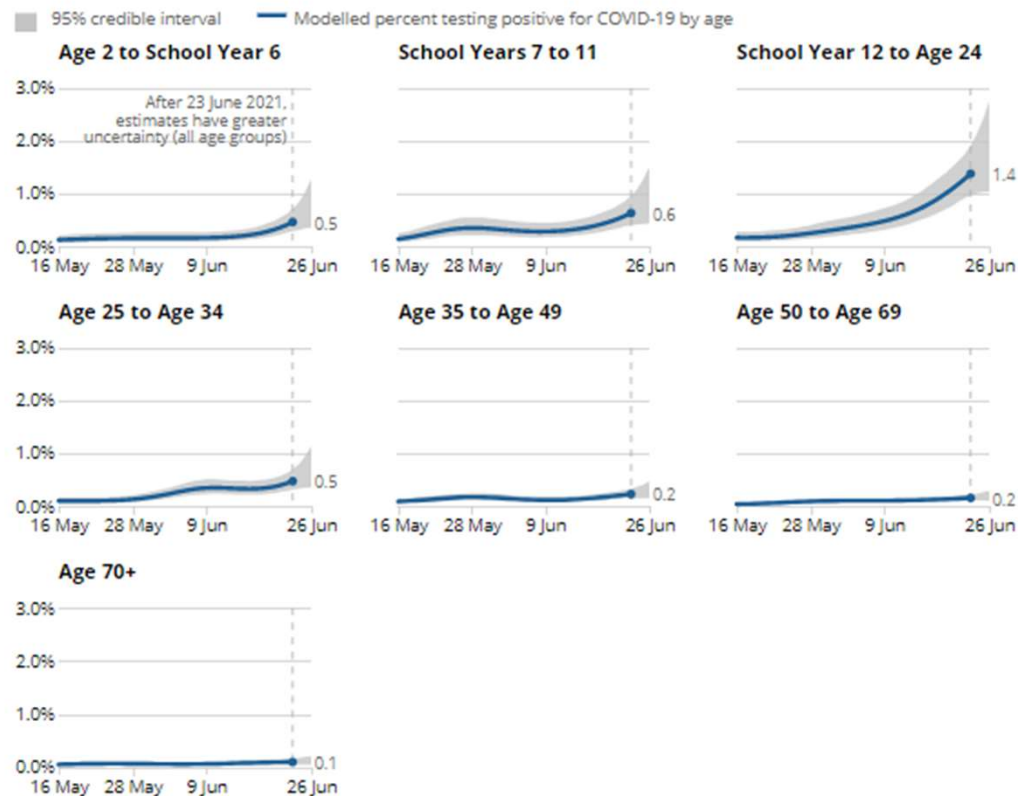
Highest rates now in 15 – 29 year olds, but most rapid week on week increase in 5-9 year olds (66%) followed by 10-14 year olds (58%).

Data from <https://coronavirus.data.gov.uk>

Percentage of population testing positive by age in England (to 26th June) (ONS infection survey)

Figure 3: The percentage of people testing positive increased in all age groups except those aged 70 years and over in the week ending 26 June 2021

Estimated percentage of the population testing positive for the coronavirus (COVID-19) on nose and throat swabs, daily, by age group from 16 May to 26 June 2021, England

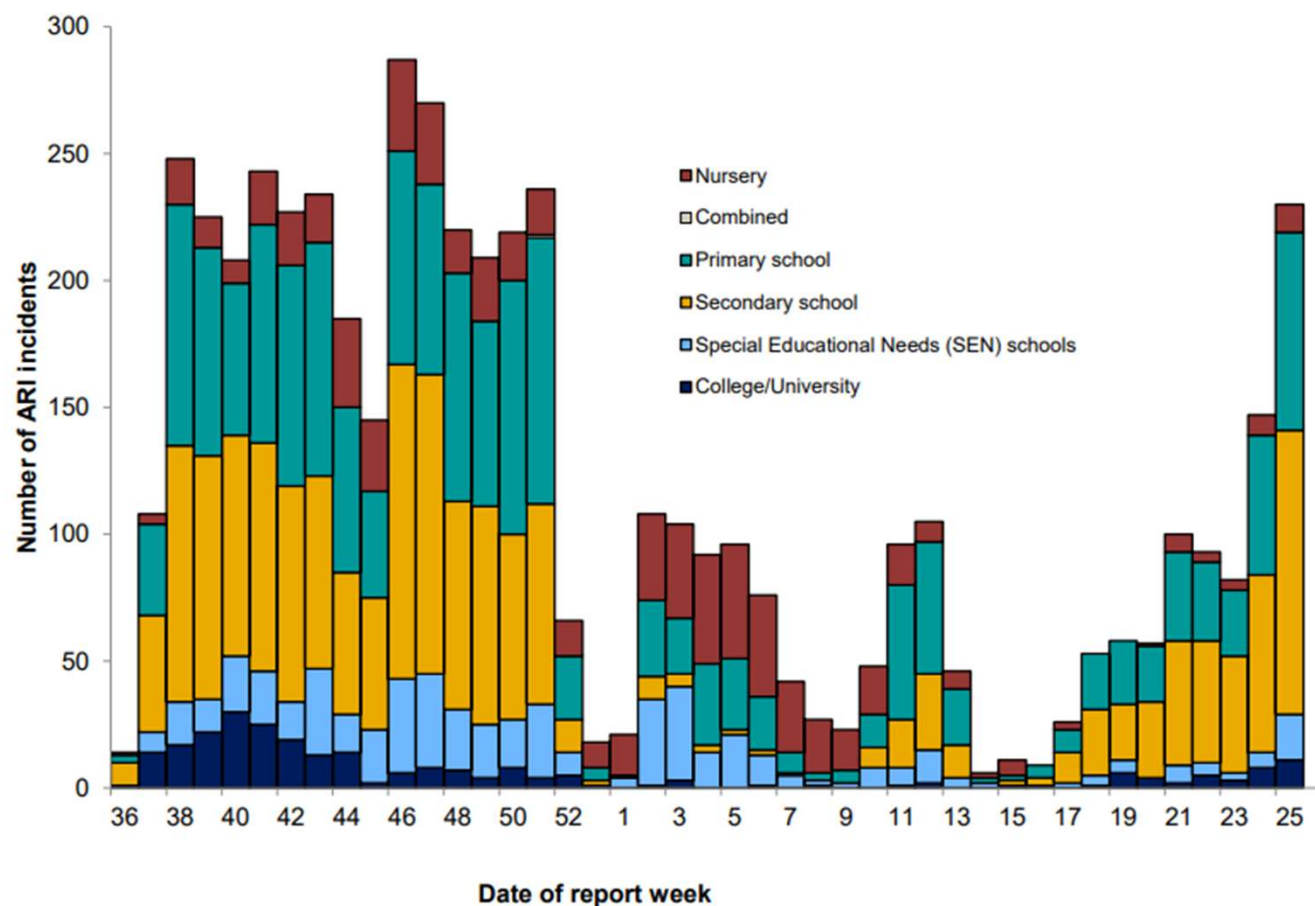


School outbreaks – Public Health England to 27th June



Public Health
England

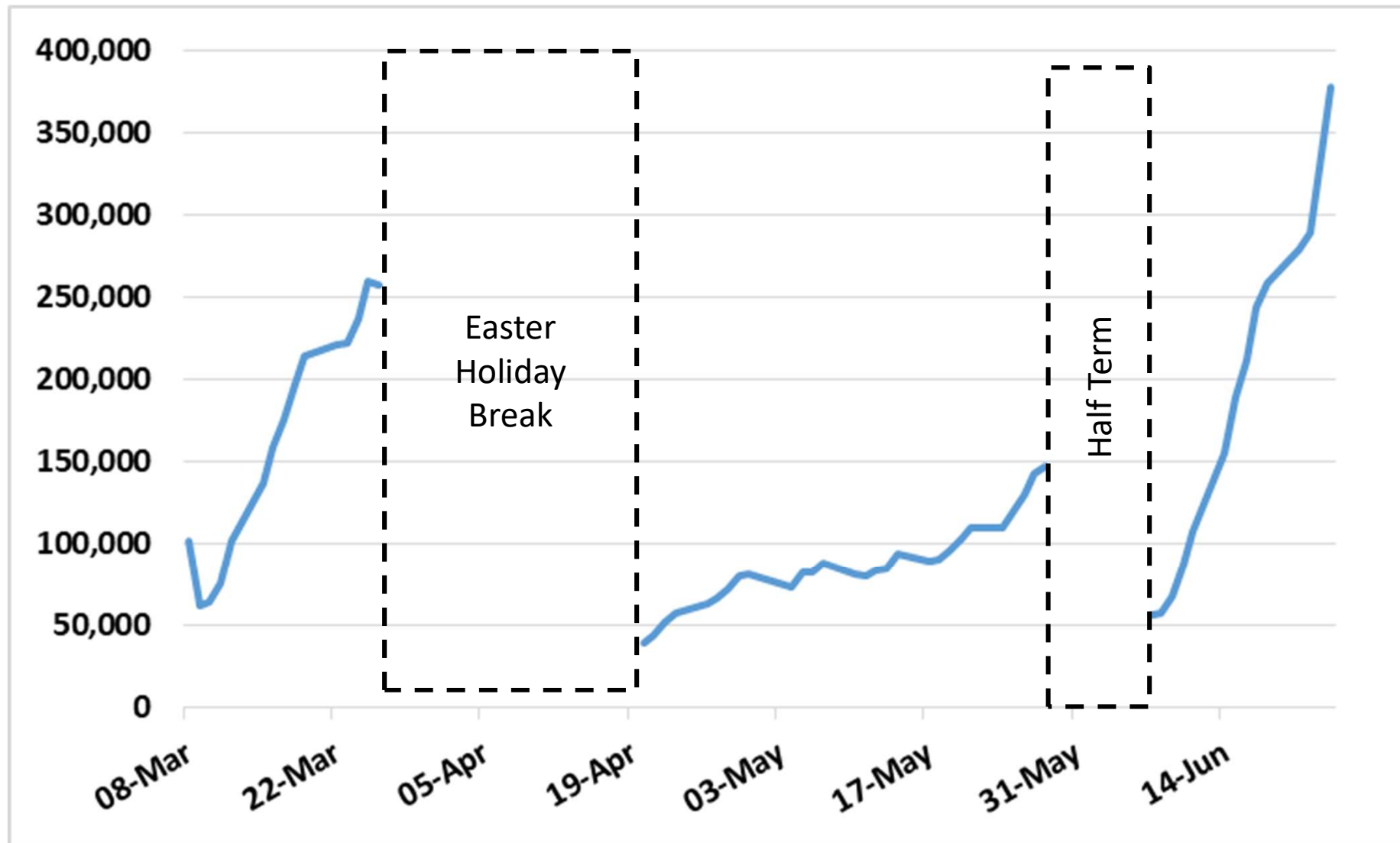
Number of COVID-19 confirmed clusters or outbreaks by type of educational setting, England



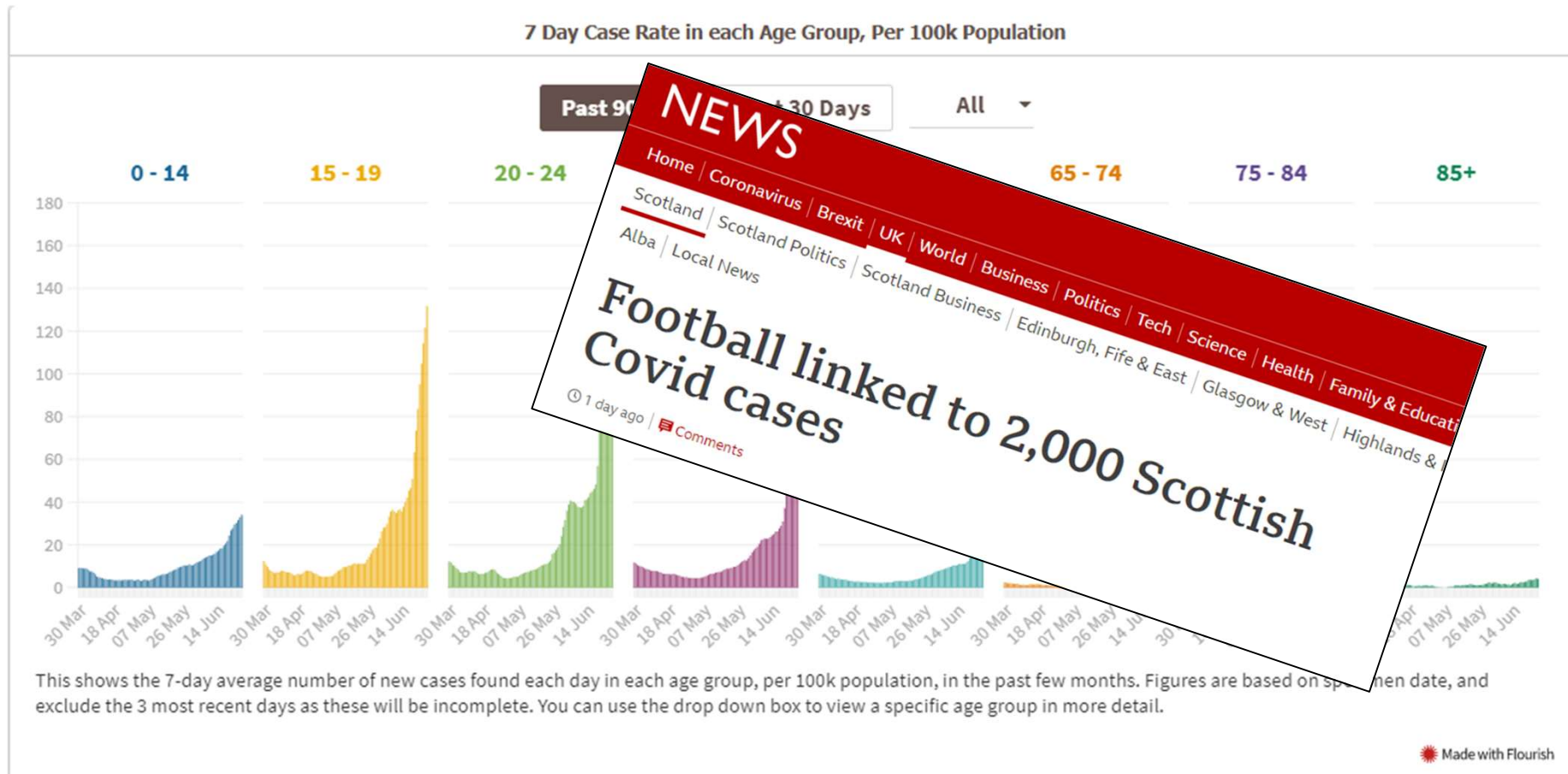
Graph from https://assets.publishing.service.gov.uk/government/uploads/system/uploads/attachment_data/file/998427/Test_and_Trace_Week56.pdf

Number of Pupils in State Primary and Secondary Schools absent due to Covid-19 for England from Mar 8 to Jun 24

(Source: Attendance in education and early years settings during the coronavirus (COVID-19) outbreak)



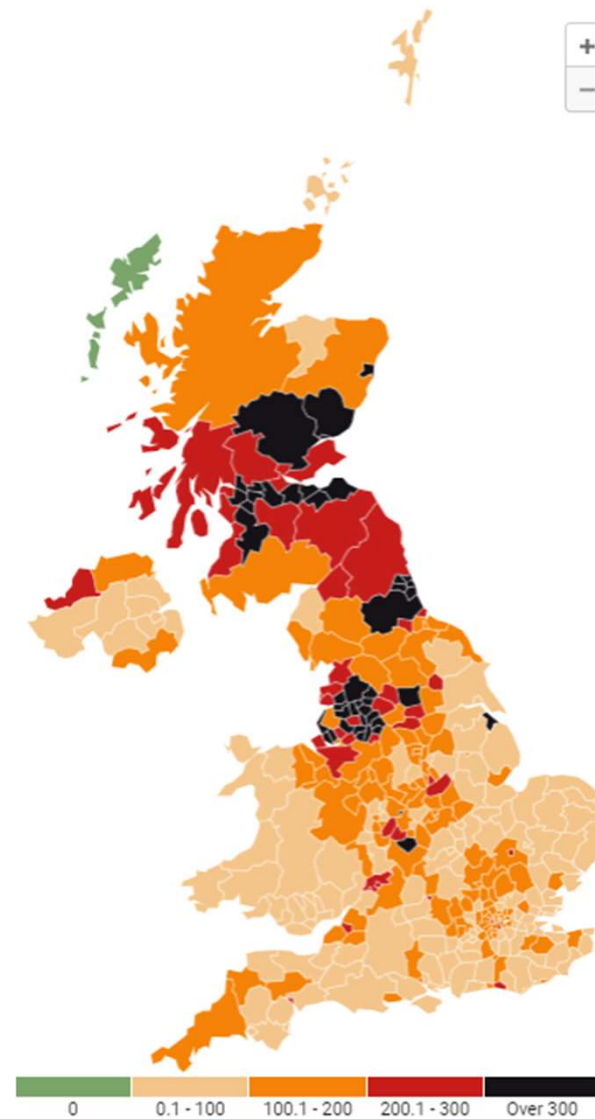
Young people –Scotland



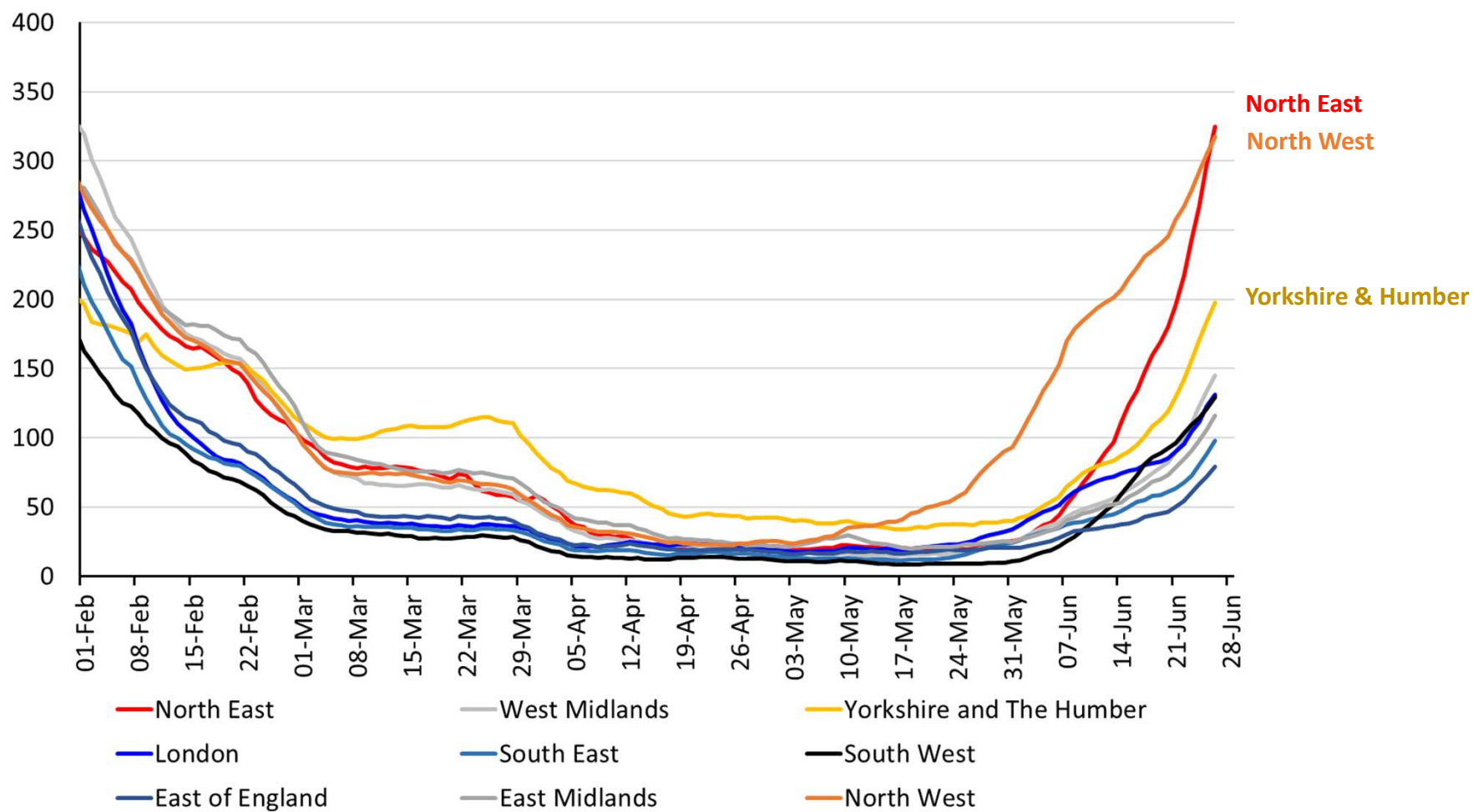
Graph from <https://www.travellingtabby.com/scotland-coronavirus-tracker/>

Where

Map of cases over previous seven days broken down by local authority (per 100k of population) to 26th June



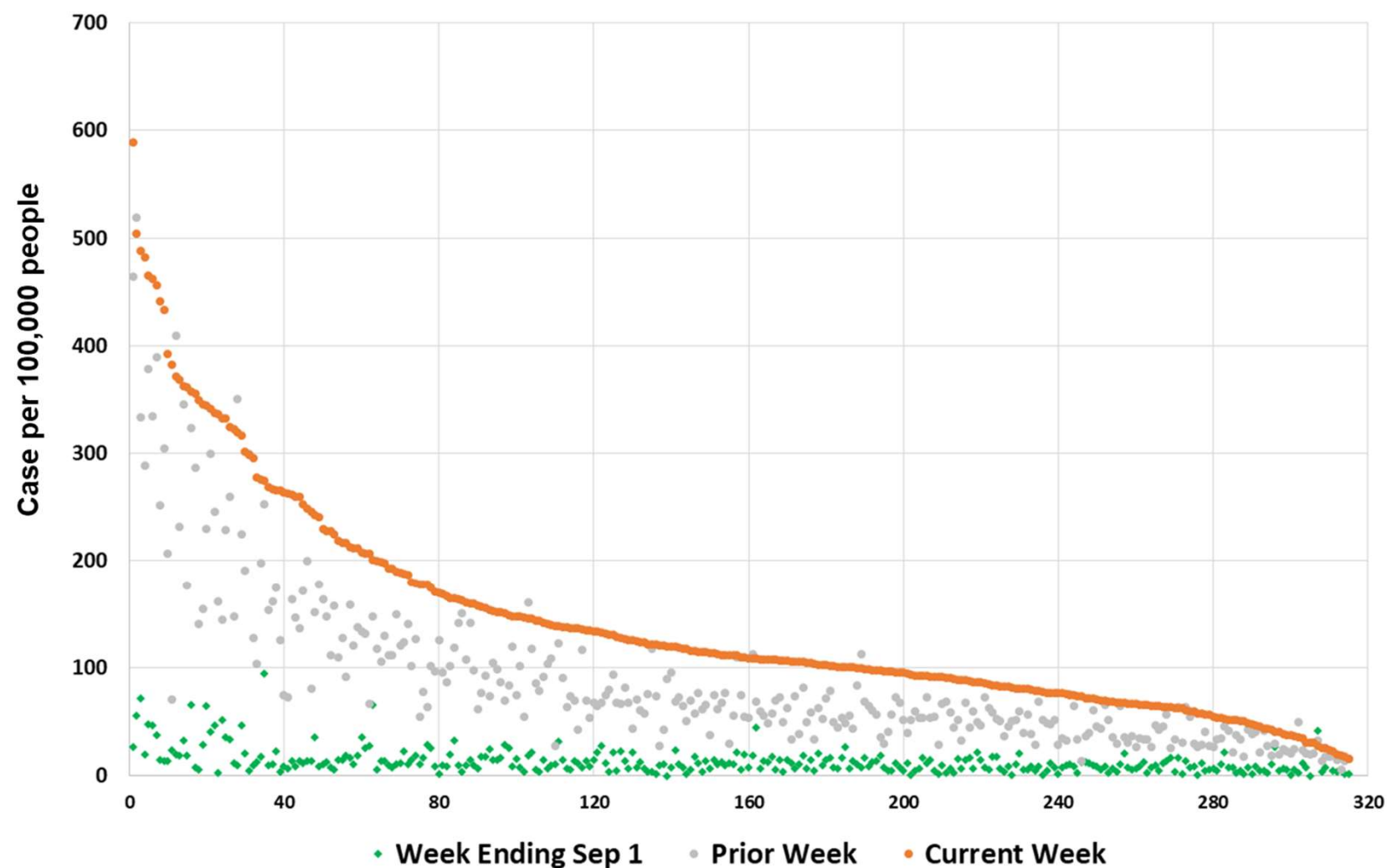
Cases per 100,000 people per week for English Regions to 26th June by date of test



Data from <https://coronavirus.data.gov.uk>

Cases per 100K per Week for All England Local Authorities

Comparison of week ending Jun 26 ● to prior week ● to week ending Sep 1 ◆



Data from <https://coronavirus.data.gov.uk>

Why should we care

Does it matter if infections go up?

Boris Johnson says the UK's vaccine rollout HAS 'broken the link' between Covid infections and deaths as he insists the country is now in the 'final' step in lockdown by 19

🏠 > News > Global Health Security > Science & Disease
Stop daily case updates as virus no longer an 'important cause of mortality', says Jo scientist

CORONAVIRUS
'Children better off catching Covid naturally than having a jab'

UK confident about July reopening despite soaring cases

Britain's new health secretary says he is confident that England is on track to remove the country's remaining coronavirus restrictions on July 19

Does it matter if infections go up? Yes

- Hospitalisations (and deaths) are far far lower than they would be without vaccination, but they are still rising. More people will get very sick and some will die.
- The rate of admissions to hospital is increasing. This is bad for the people who need hospital but also for exhausted health care staff trying to get through the backlog. It will stress the system.
- ONS reports 1 million people living with **long covid**. Of these, over 850,000 had symptoms at least 12 weeks and 385,000 for over a year.
- 634,000 people said it adversely affected their daily lives, 178,000 said it limited their activities a lot.

ONS long covid:

<https://www.ons.gov.uk/peoplepopulationandcommunity/healthandsocialcare/conditionsanddiseases/bulletins/prevalenceofongoingsymptomsfollowingcoronaviruscovid19infectionintheuk/1july2021>

Does it matter if infections go up? Yes

- Hospitalisations (and deaths) are far far lower than they would be without vaccination, but they are still rising. More people will get very sick and some will die.
- The rate of admissions to hospital is increasing. This is bad for the people who need hospital but also for exhausted health care staff trying to get through the backlog. It will stress the system.
- ONS reports 1 million people living with **long covid**. Of these, over 850,000 had symptoms at least 12 weeks and 385,000 for over a year.
- 634,000 people said it adversely affected their daily lives, 178,000 said it limited their activities a lot.
- Most common symptoms of long Covid: Fatigue (over half of people), shortness of breath, muscle ache and difficulty concentrating (third of people).
- More frequent in women, people over 35, people living in deprived areas, those working in health care, those with other health conditions
- Still common in young people. Previous ONS report estimated that out of people who had tested positive, 7-8% of 2-15 year olds, 12% of 17-24 and 16-18% of 25-70 year olds had symptoms for more than 12 weeks.

ONS long covid:

<https://www.ons.gov.uk/peoplepopulationandcommunity/healthandsocialcare/conditionsanddiseases/bulletins/prevalenceofongoingsymptomsfollowingcoronaviruscovid19infectionintheuk/1july2021>

Does it matter if infections go up? Yes

- So for each million new cases, between 100,000 to 200,000 people could end up with long covid (depending on age). Many will find their ability to study or work has been affected. The longer term consequences of covid are as yet unknown.
- **Deprivation:** we know that cases are highest in more deprived areas. We know that people from more deprived communities have lower vaccination rates, are more vulnerable to getting sick from covid, and more likely to get long covid. We know that the education of children in more deprived communities is more disrupted and with less ability to compensate for missed school.
- **Variants:** every new case provides a chance for covid to mutate further. Delta went from zero to over 90% of cases in UK in 10 weeks. As covid goes through our children, any new mutation that can infect their vaccinated parents (and their peer group) gains a selection advantage.
- Government is allowing cases to spiral in the full knowledge that we have **safe and highly effective vaccines** (after 2 doses) . Pfizer is now approved for anyone over 12. Trials of Pfizer, Moderna and AZ in children under 11 are underway.
- The government is not only not strengthening the basic public health measures that we know work: good contact tracing, support for isolation, ventilation, it is planning to remove measures: social distancing, masks, isolation while supporting mass events and opening of venues such as nightclubs without testing.
- With our excellent vaccination programme plus better public health measures **we don't need to reach population immunity through infection** and its consequences but that seems to be the plan. **It's a terrible plan.**