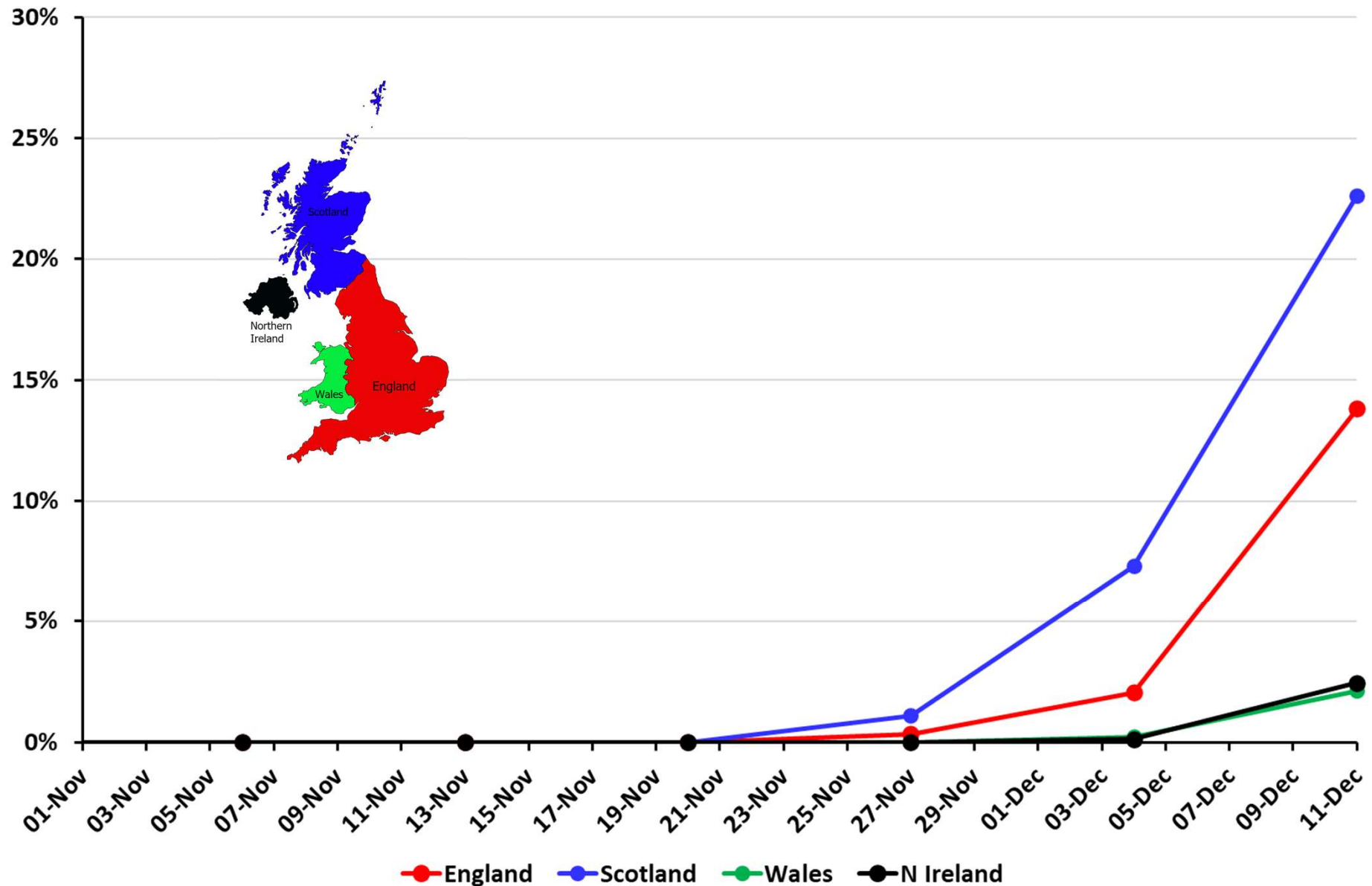


1. Omicron update
2. National picture
3. Testing
4. London
5. Emergency plan

With many thanks to Bob Hawkins for his help in collating the data

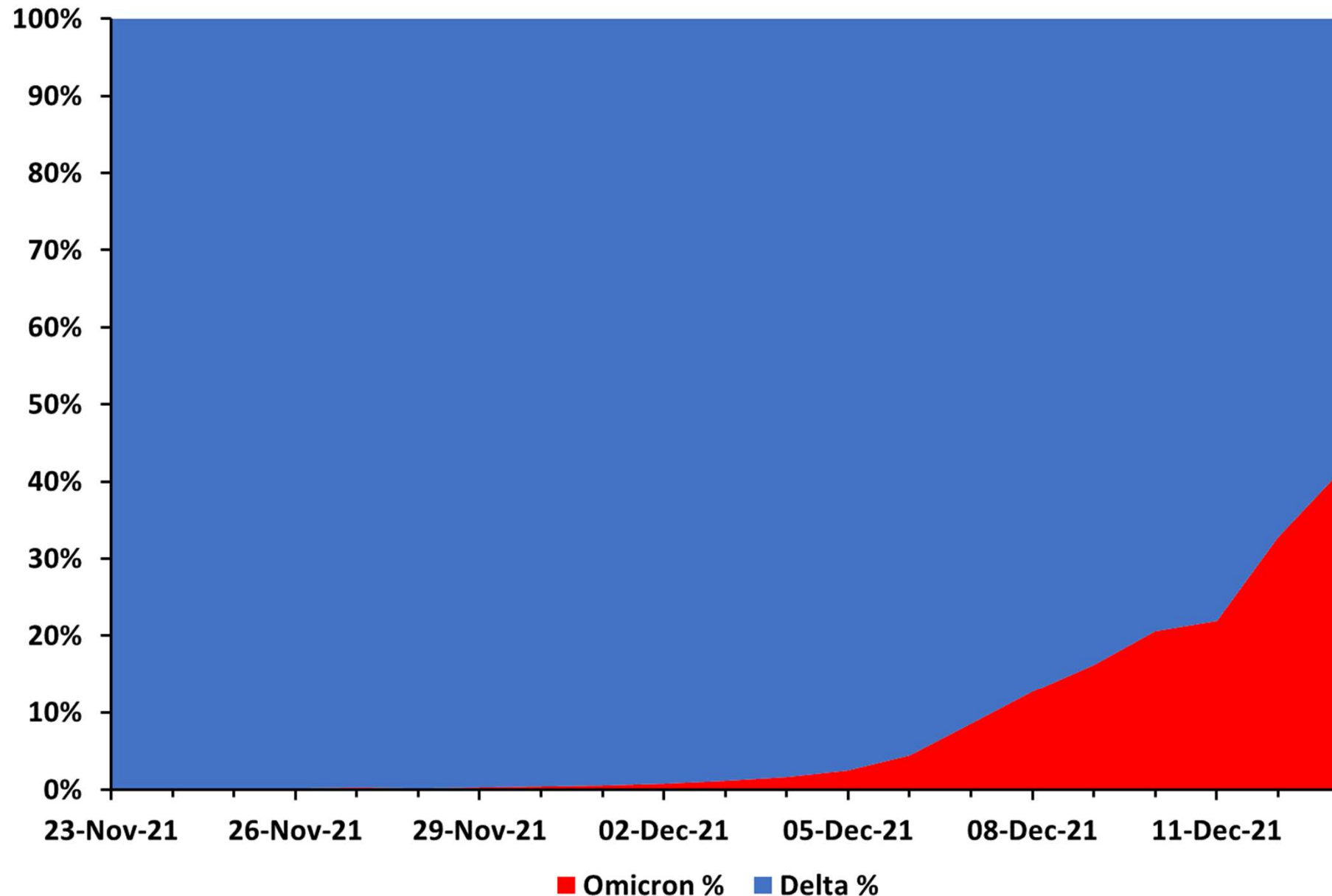
Omicron

# Proportion of sequenced cases that are Omicron by week and nation up to 11 Dec 2021



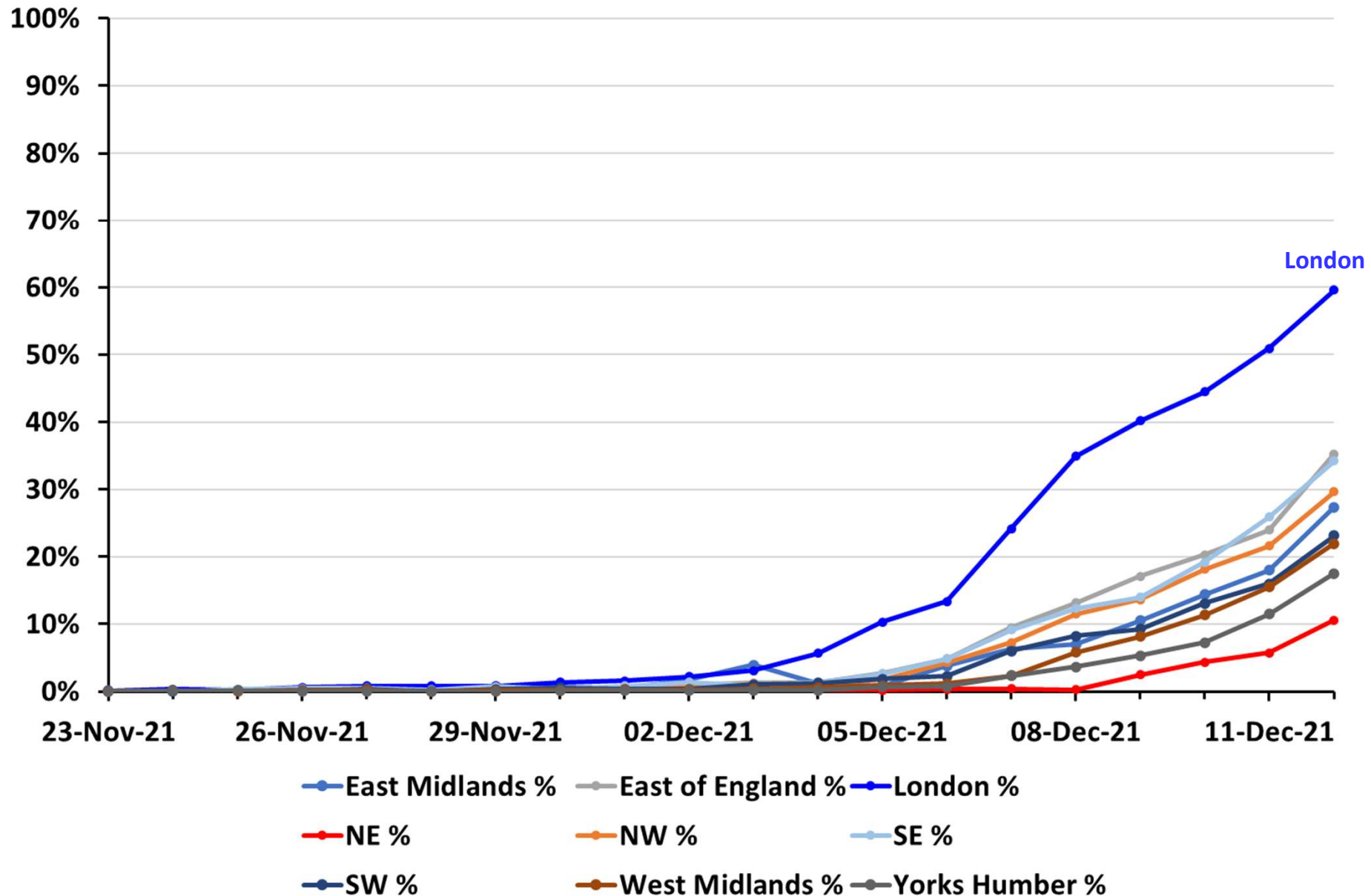
Data from <https://sars2.cvr.gla.ac.uk/cog-uk/>

## Proportion of sequenced cases that are likely Omicron and Delta in England to 13 December 2021 (“S gene dropout” data)



Data from <https://www.gov.uk/government/publications/covid-19-omicron-daily-overview>

## Proportion of sequenced cases that are likely Omicron by region to 13 December 2021 (“S gene dropout” data)



Data from <https://www.gov.uk/government/publications/covid-19-omicron-daily-overview>

# Speed of growth in English regions

## Regional doubling times for the number of test with SGTF

Region	Doubling Time	Doubling Time Lower CI	Doubling Time Upper CI
East Midlands	1.89	2.64	1.48
East of England	1.64	2.25	1.29
London	1.5	1.96	1.21
North East	1.55	2.06	1.24
North West	1.84	2.14	1.62
South East	1.65	1.95	1.43
South West	2.18	3.26	1.64
West Midlands	1.54	1.98	1.26
Yorkshire and Humber	1.53	2.09	1.21

**Data up to 18h00 15 December 2021**

Imperial study out today also confirms 2 day doubling rates.

## Imperial report out today on Omicron

Reports highest rates by far in London and in 18-29 year olds.

You are five times more likely to be reinfected with Omicron than you would have been with Delta.

Two doses of vaccine (either AZ or Pfizer) do little to prevent Omicron infection. A booster helps \*a lot\* but is still worse than for Delta. (Vaccines should still help significantly against severe disease)

“We find strong evidence of immune evasion, both from natural infection ... and from vaccine-induced protection [for infection]”

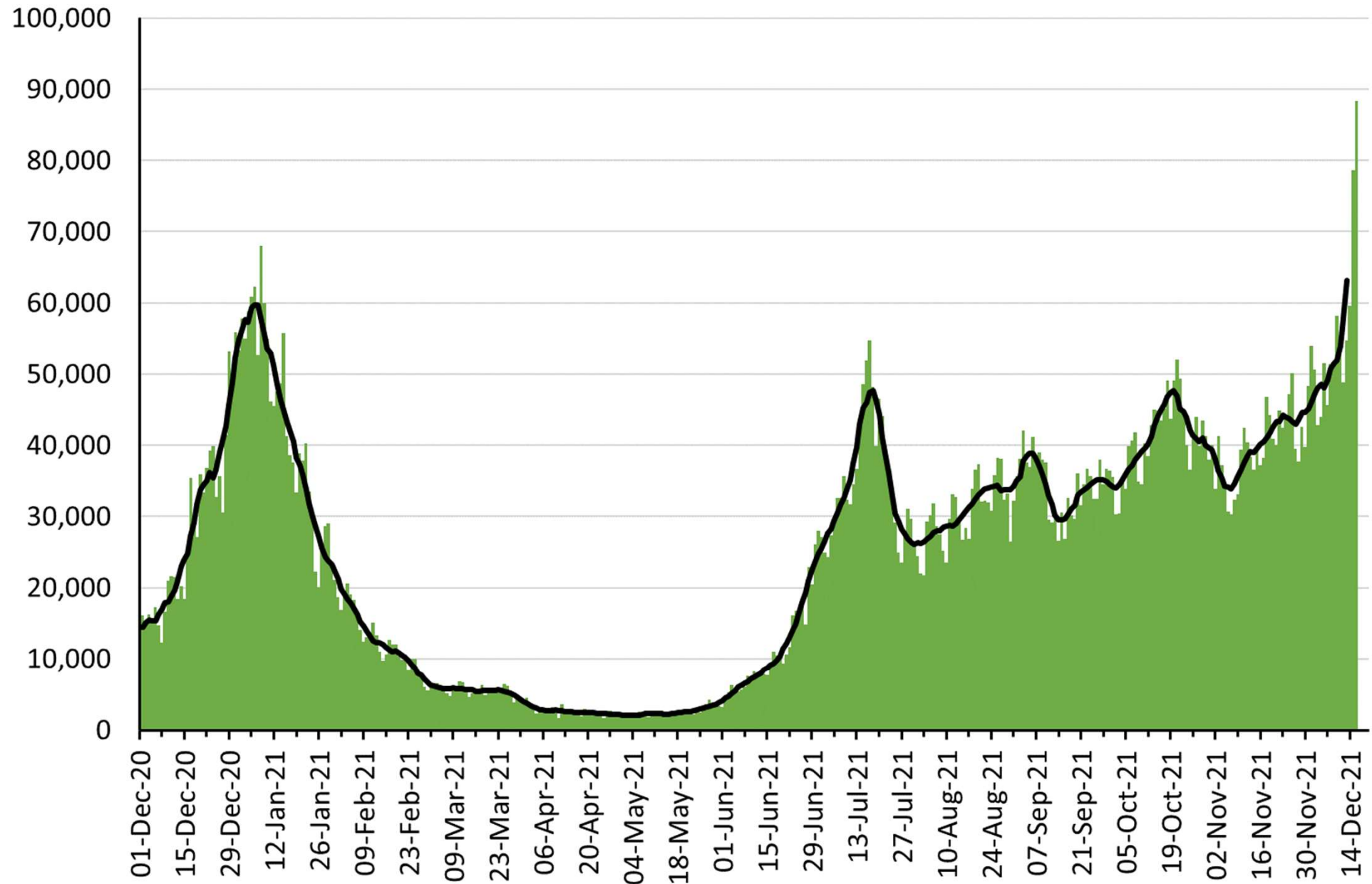
“Hospitalisation and asymptomatic infection indicators were not significantly associated with Omicron infection, **suggesting at most limited changes in severity compared with Delta.**”

<https://www.imperial.ac.uk/media/imperial-college/medicine/mrc-gida/2021-12-16-COVID19-Report-49.pdf>

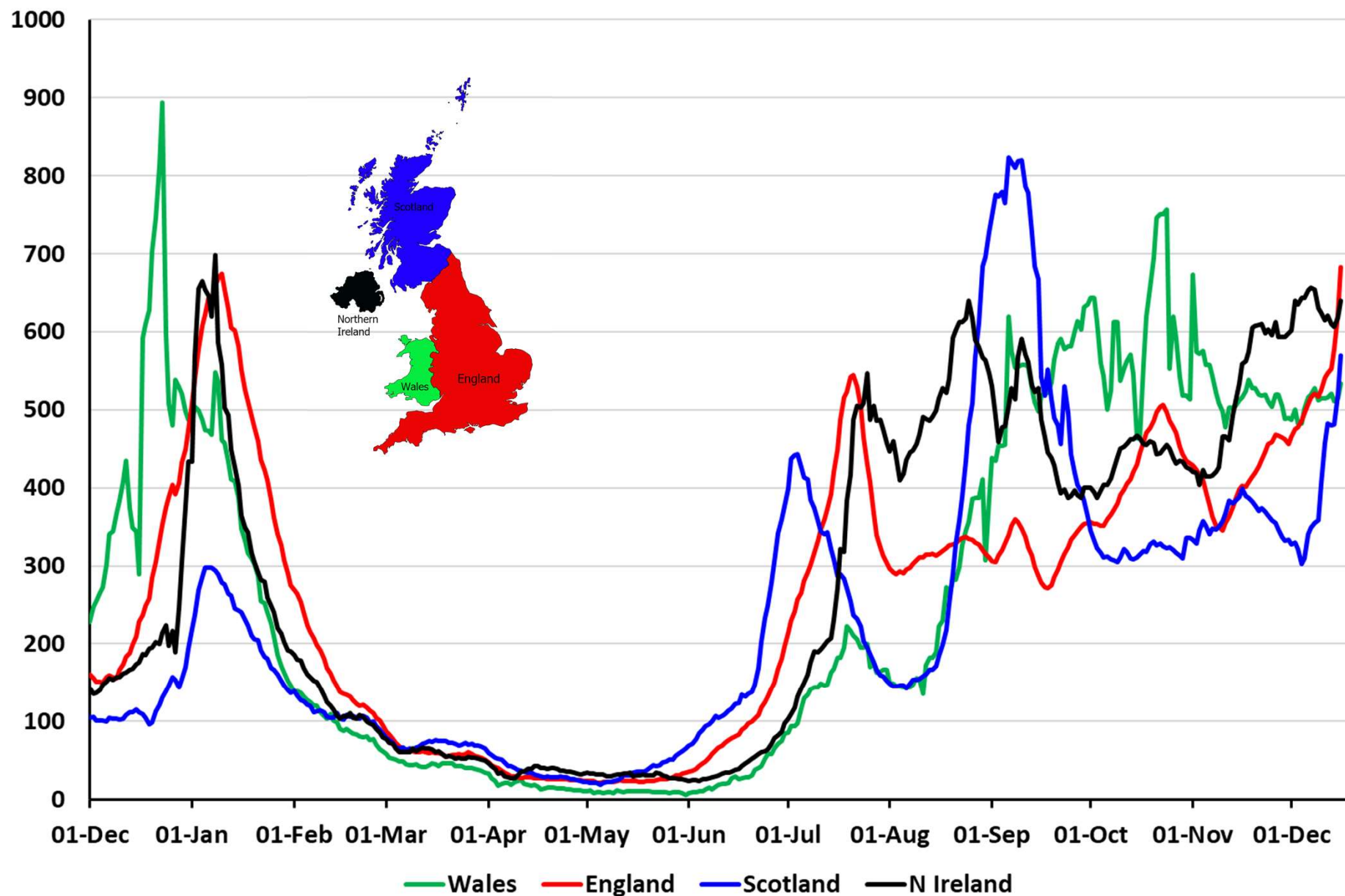
National picture



# Number of new UK confirmed COVID-19 cases by reported date (people who have had a positive test) to 16 December 2021

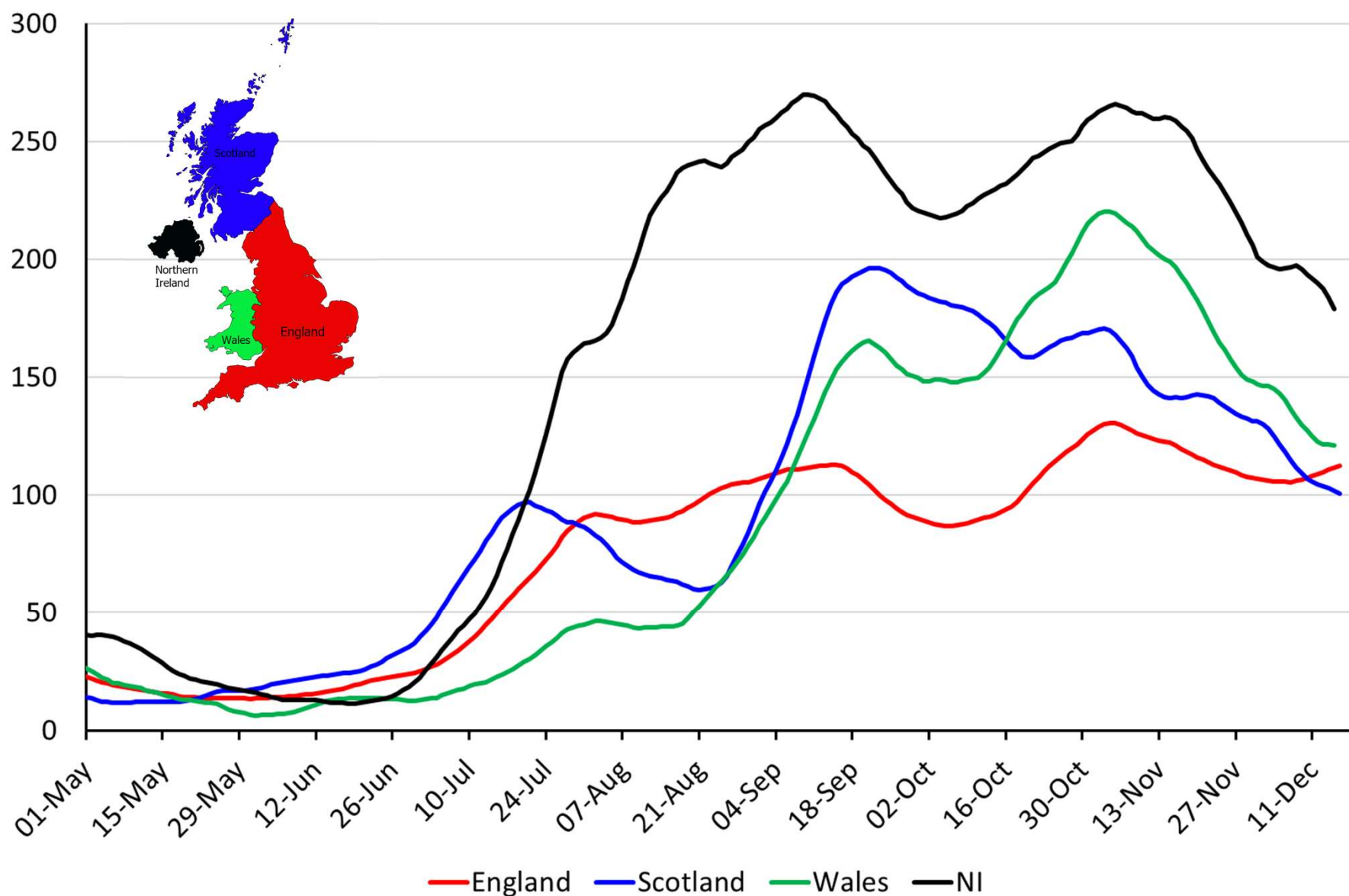


# Cases per 100,000 people per rolling week by home nation by reporting date to 16 December



# Number of people in hospital per million people – UK nations

## 7 day rolling average to 1 May 2021 – 16 Dec 2021



# ONS Infection survey prevalence of Covid in England by age to 11 December

**Figure 4: The percentage of people testing positive for COVID-19 remained highest among those aged 2 years to school Year 6**

Estimated daily percentage of the population testing positive for coronavirus (COVID-19) on nose and throat swabs by age group, England, 31 October 2021 to 11 December 2021

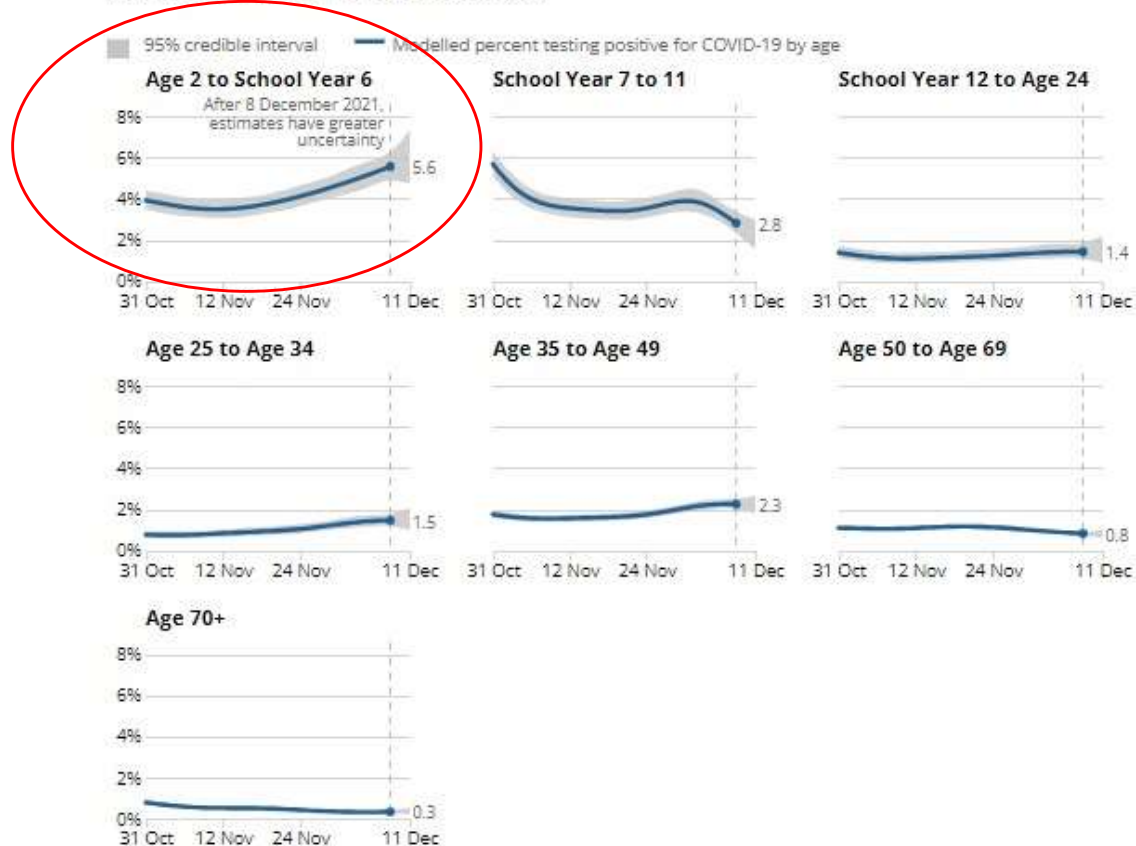
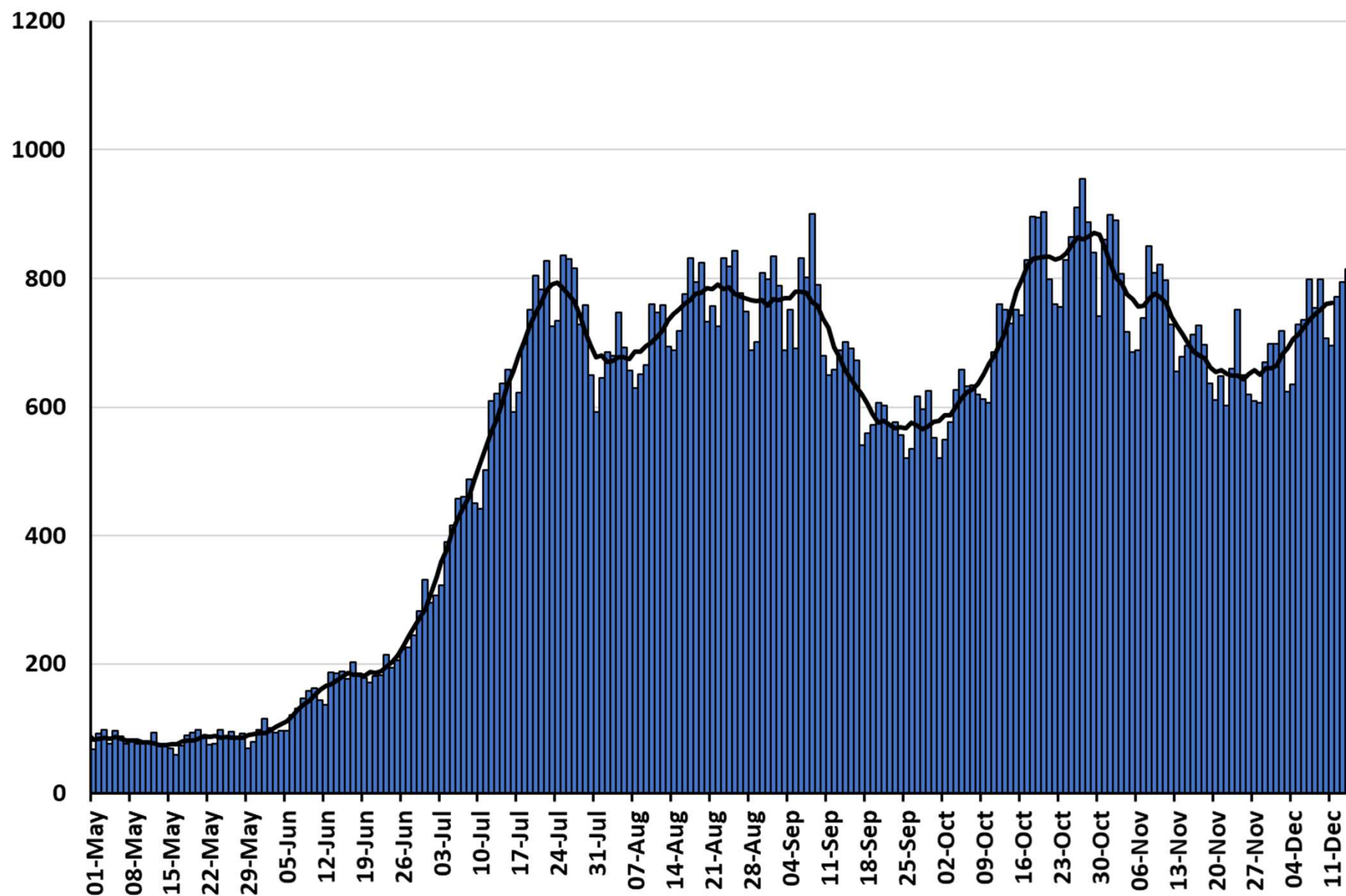


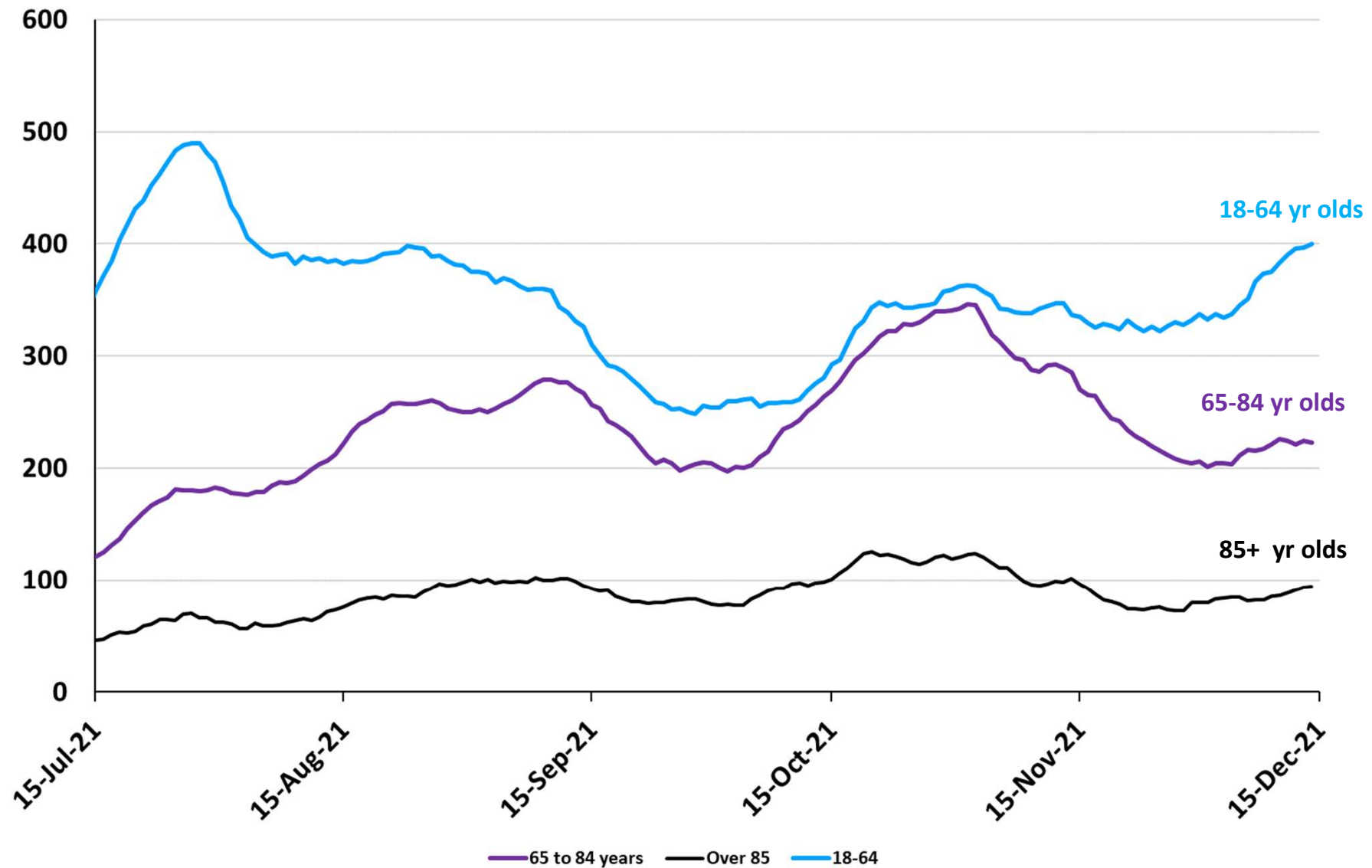
Chart from

<https://www.ons.gov.uk/peoplepopulationandcommunity/healthandsocialcare/conditionsanddiseases/bulletins/coronaviruscovid19infectionsurveys/pilot/17december2021>

# Number of hospital admissions with Covid every day in England to 7 Dec

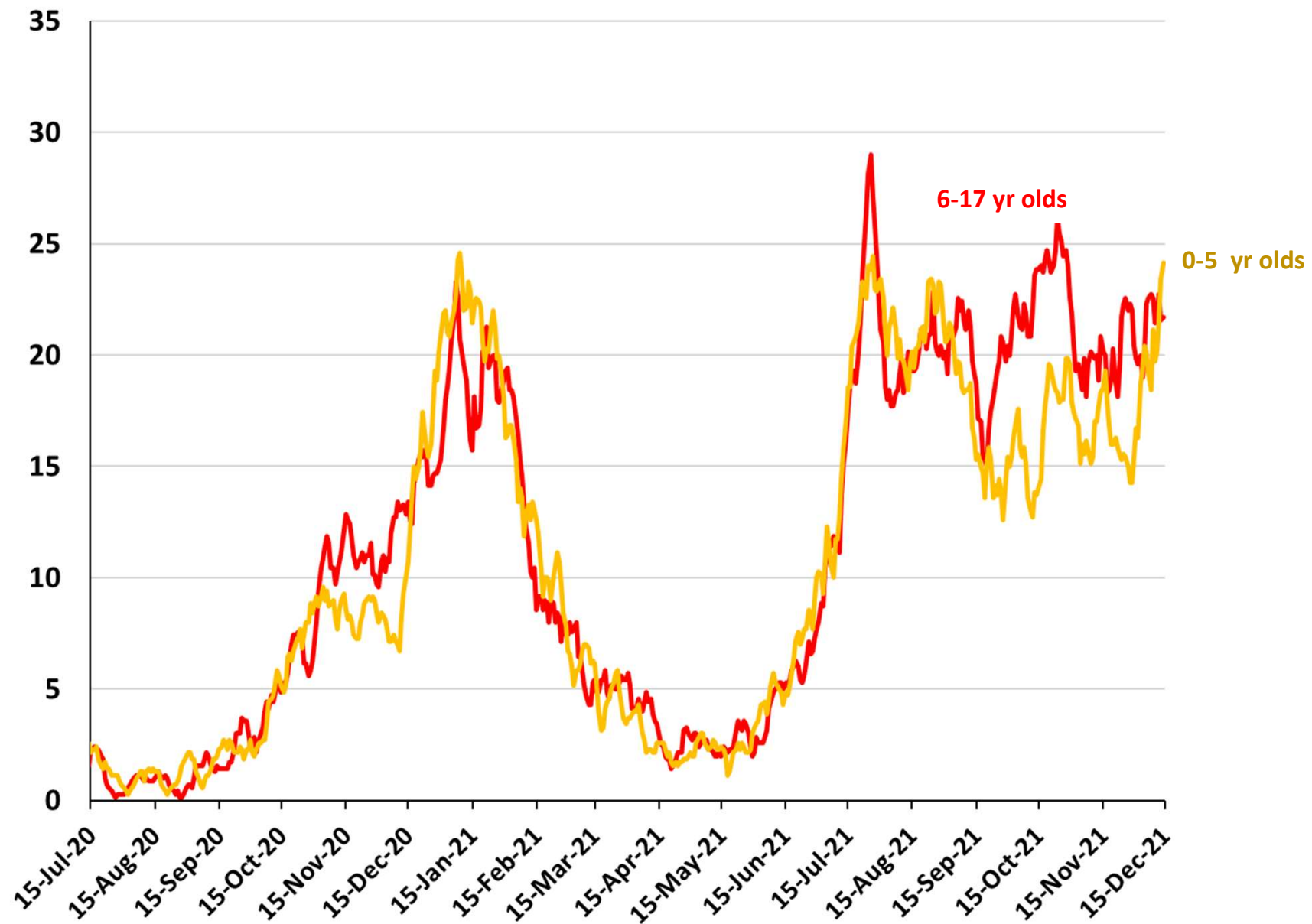


## 7-day average of Covid hospital admissions in England since July 2020 for adults



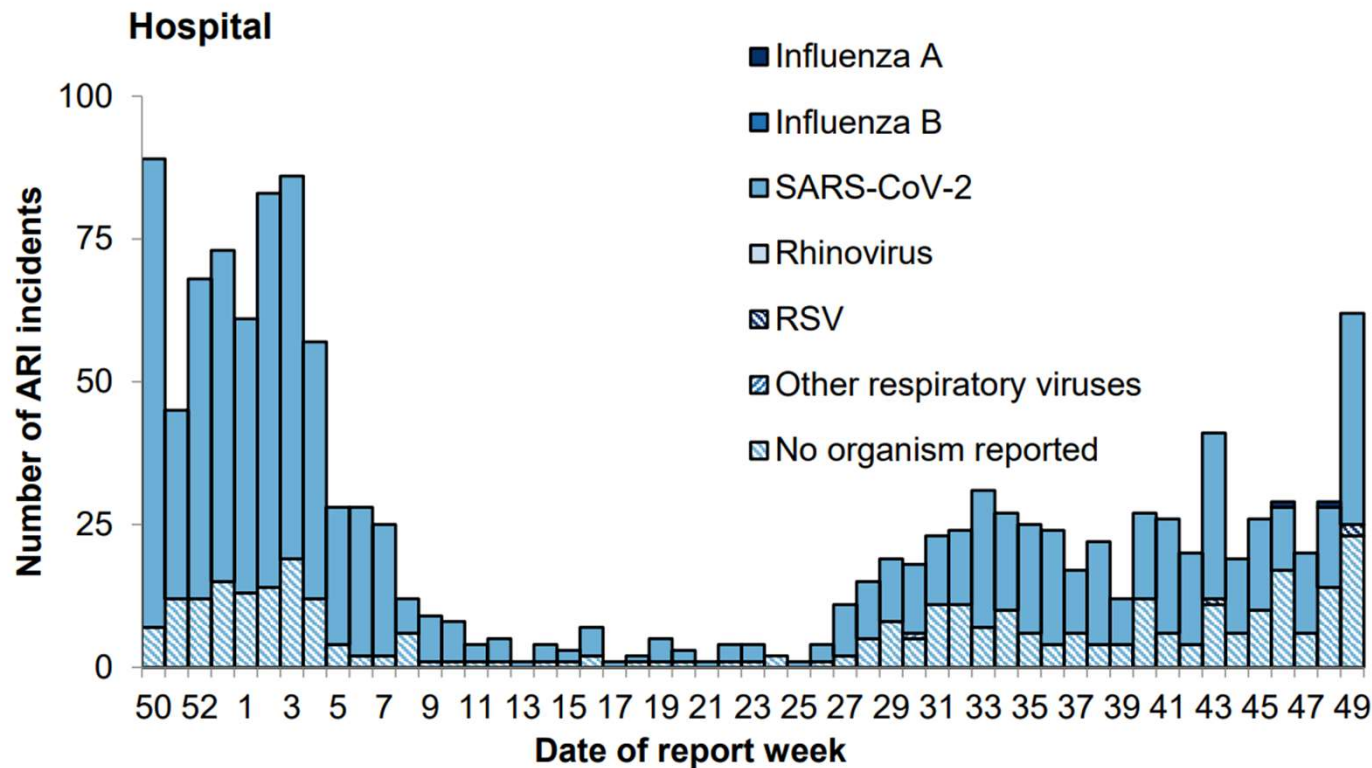


## 7-day average of Covid hospital admissions in England since July 2020 for children



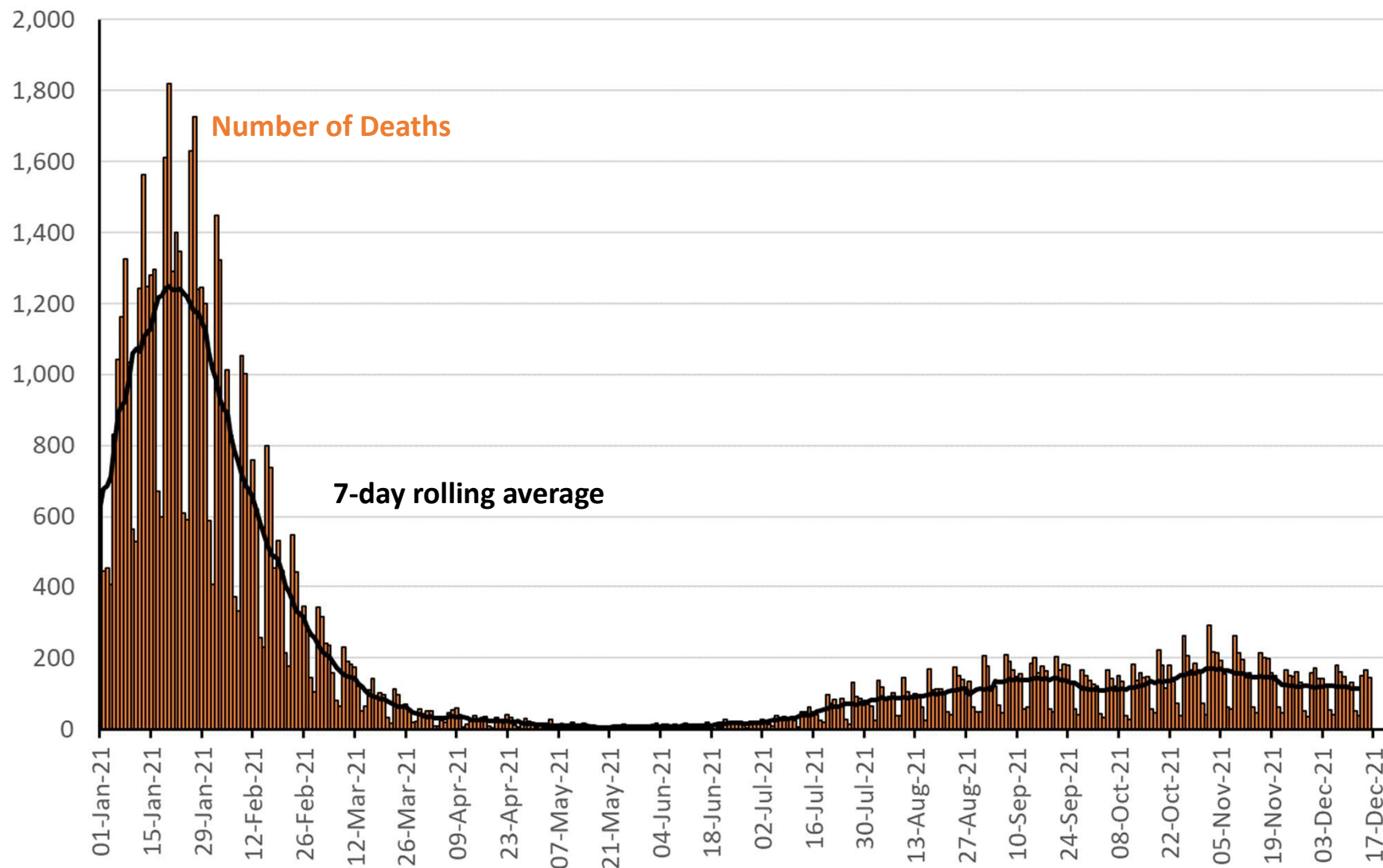
# Outbreaks in England hospitals per week to 12 December

**Figure 22: Number of acute respiratory infection (ARI) incidents in hospitals by virus type, England**



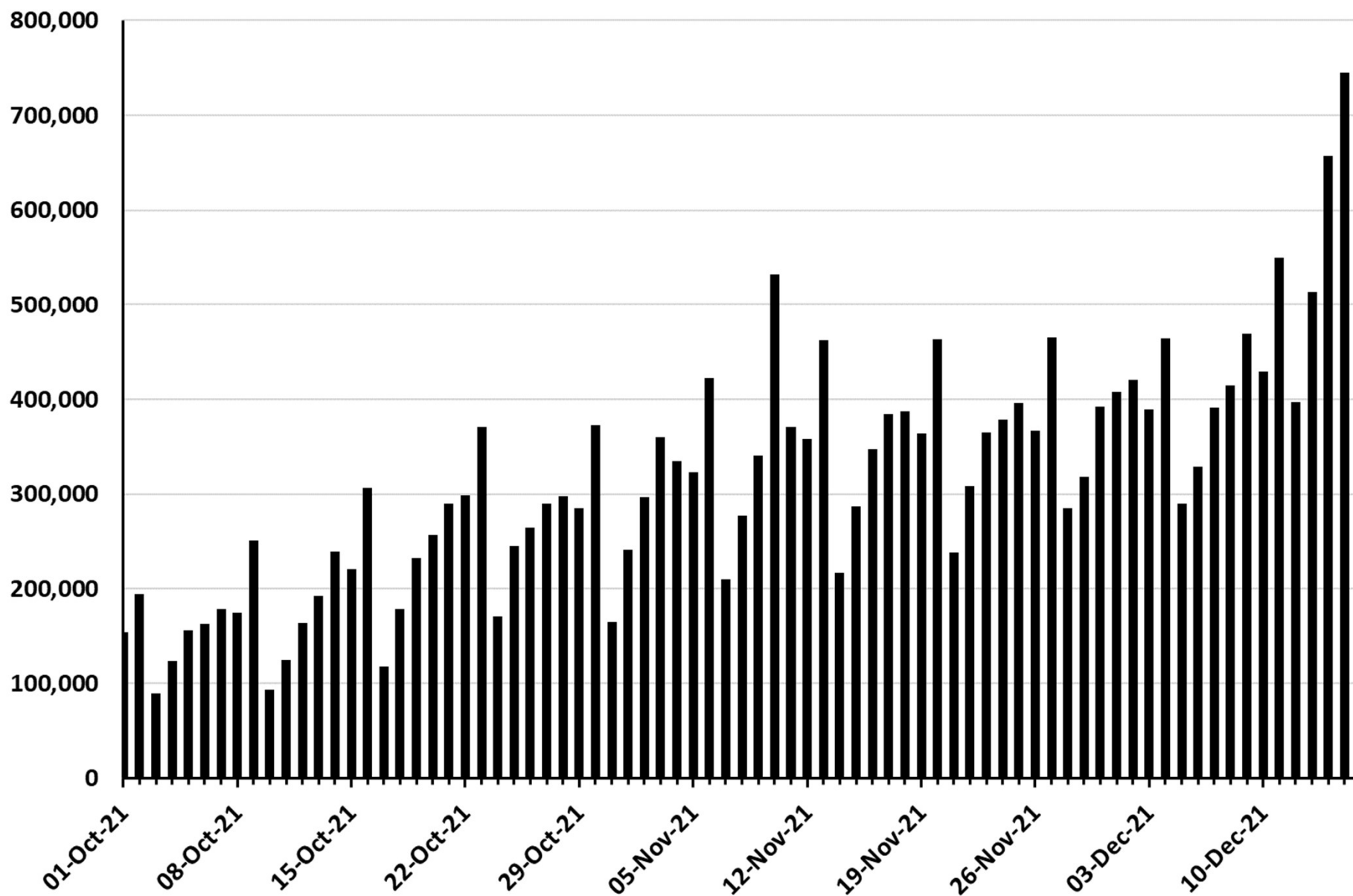


# Number of deaths within 28 days of +ve COVID test reported per day across the UK to 16 December



Data from <https://coronavirus.data.gov.uk/>

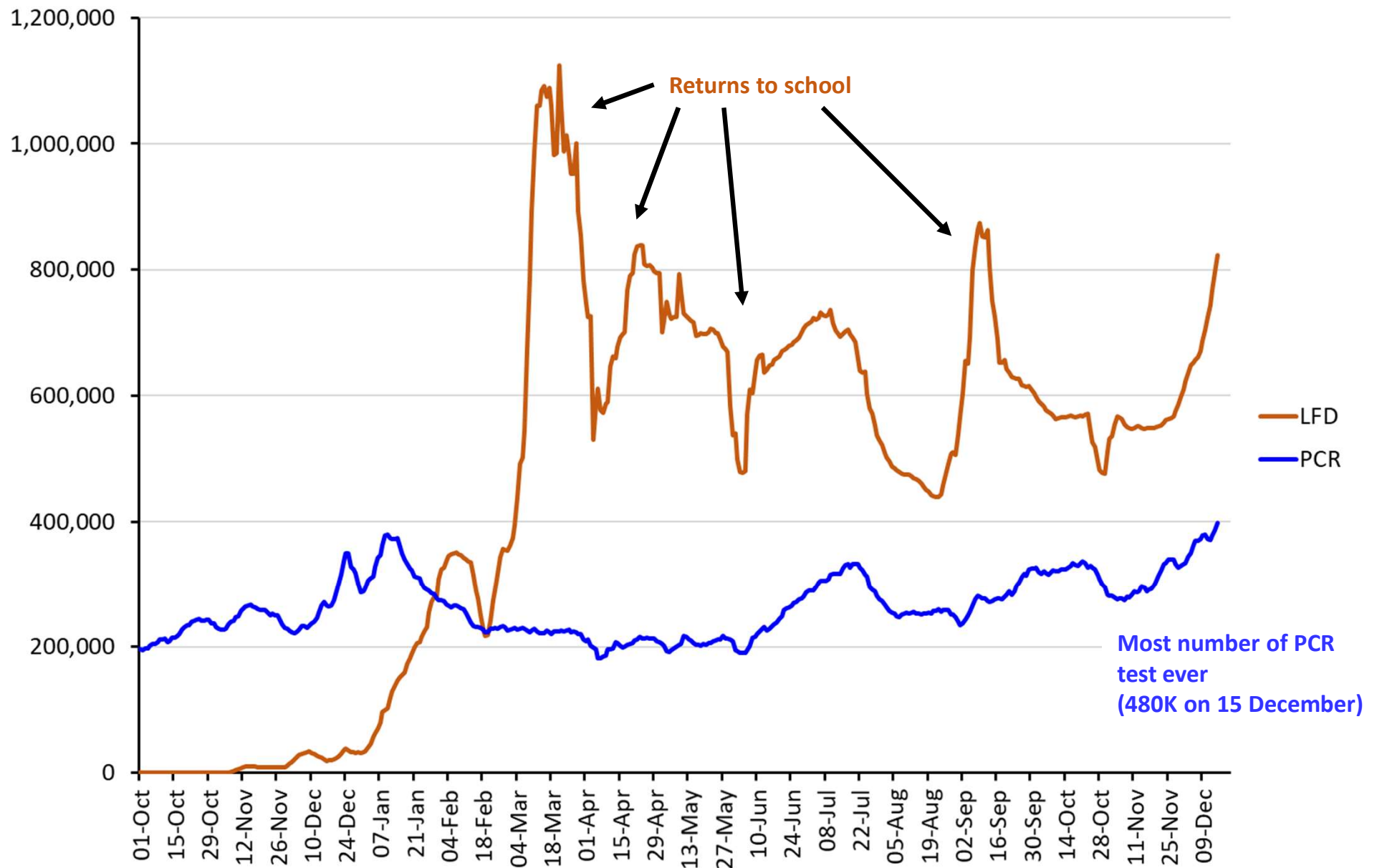
# Number of 3<sup>rd</sup> vaccine doses given per day across the UK to 15 December



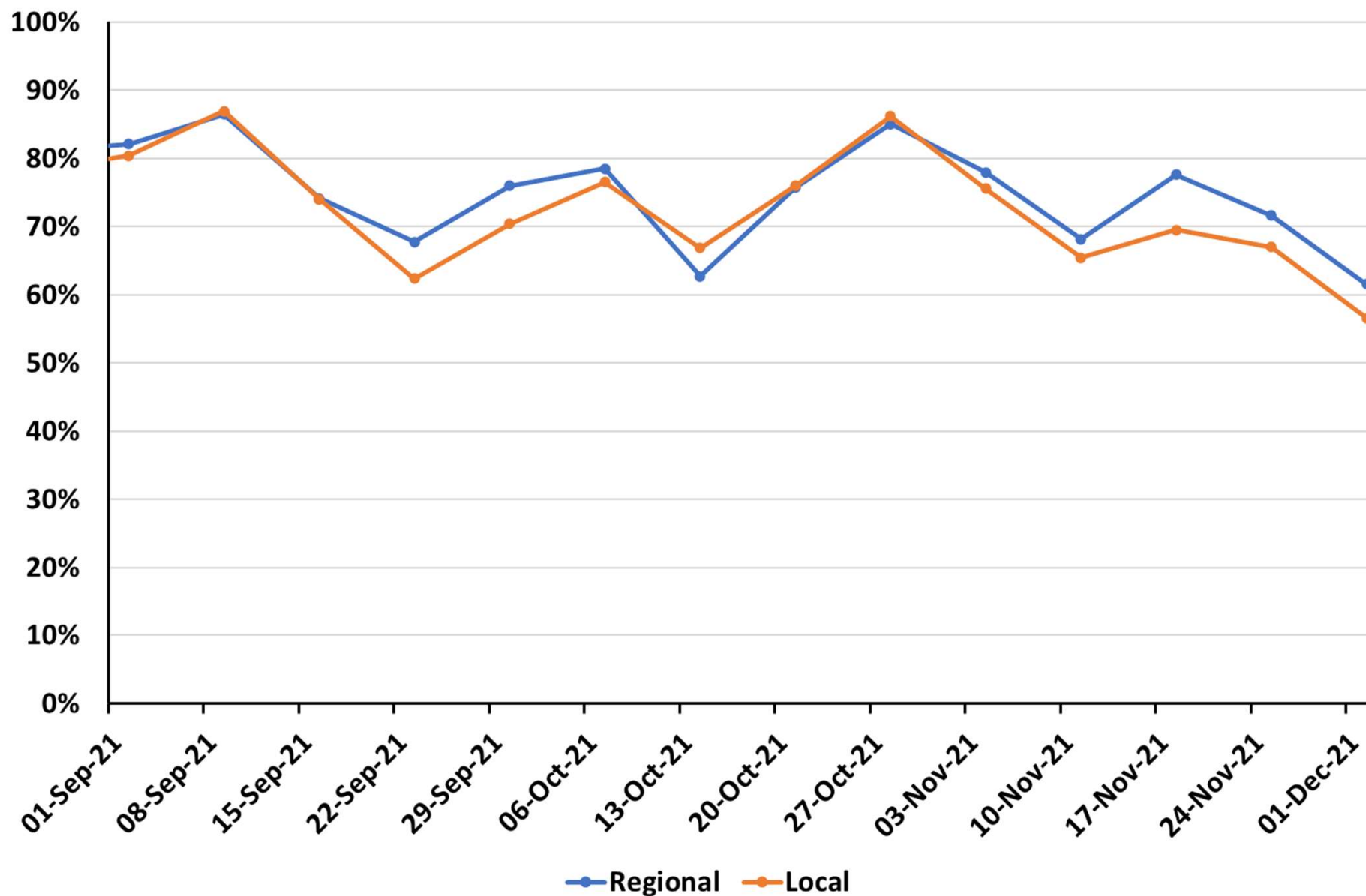
Data from <https://coronavirus.data.gov.uk/>

# Testing

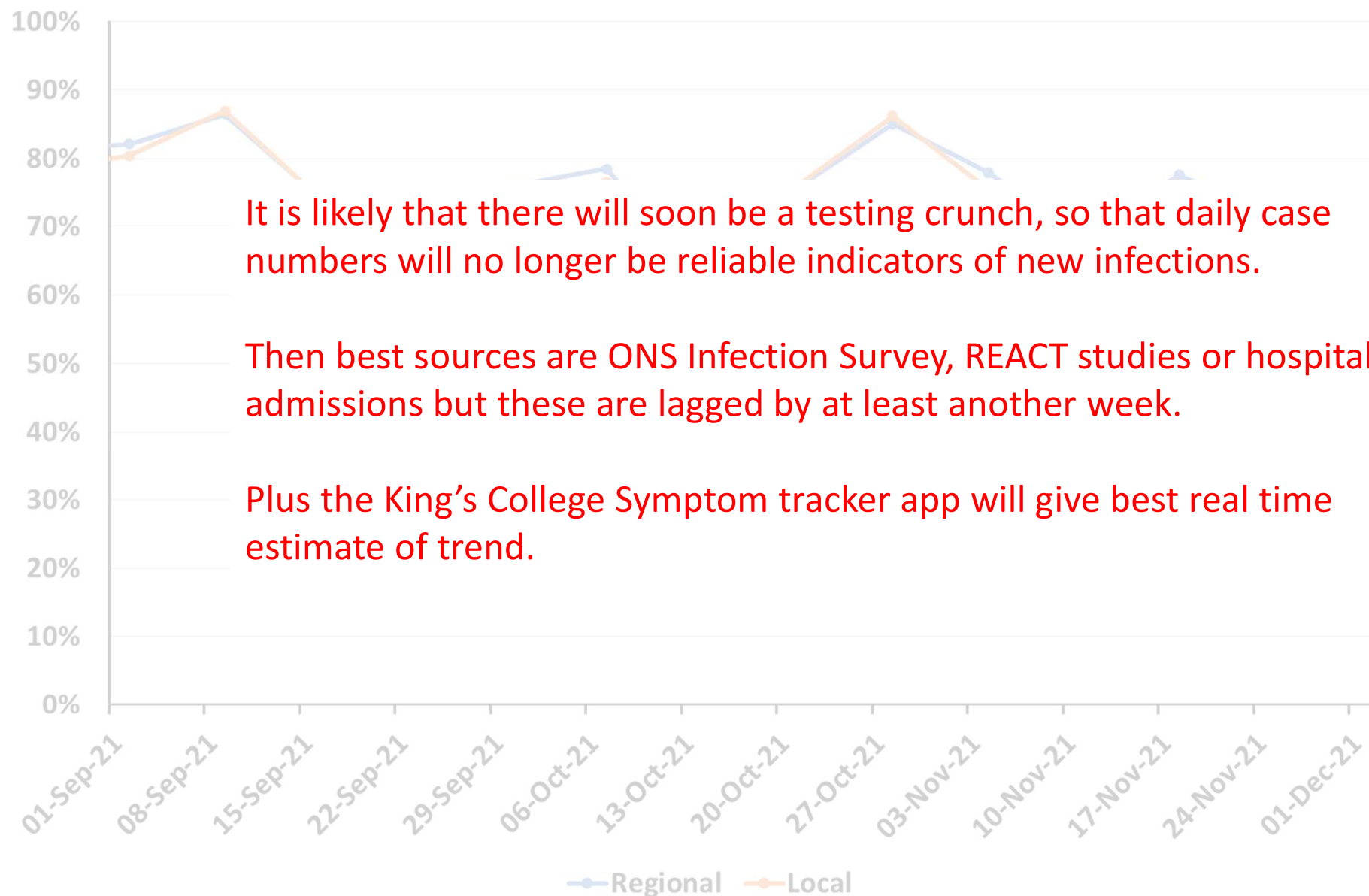
## 7-day rolling average of number of Lateral Flow and PCR tests taken each day to 15 December in England



## Percentage of test results returned within 24 hour of test by week to week ending 12 December in England

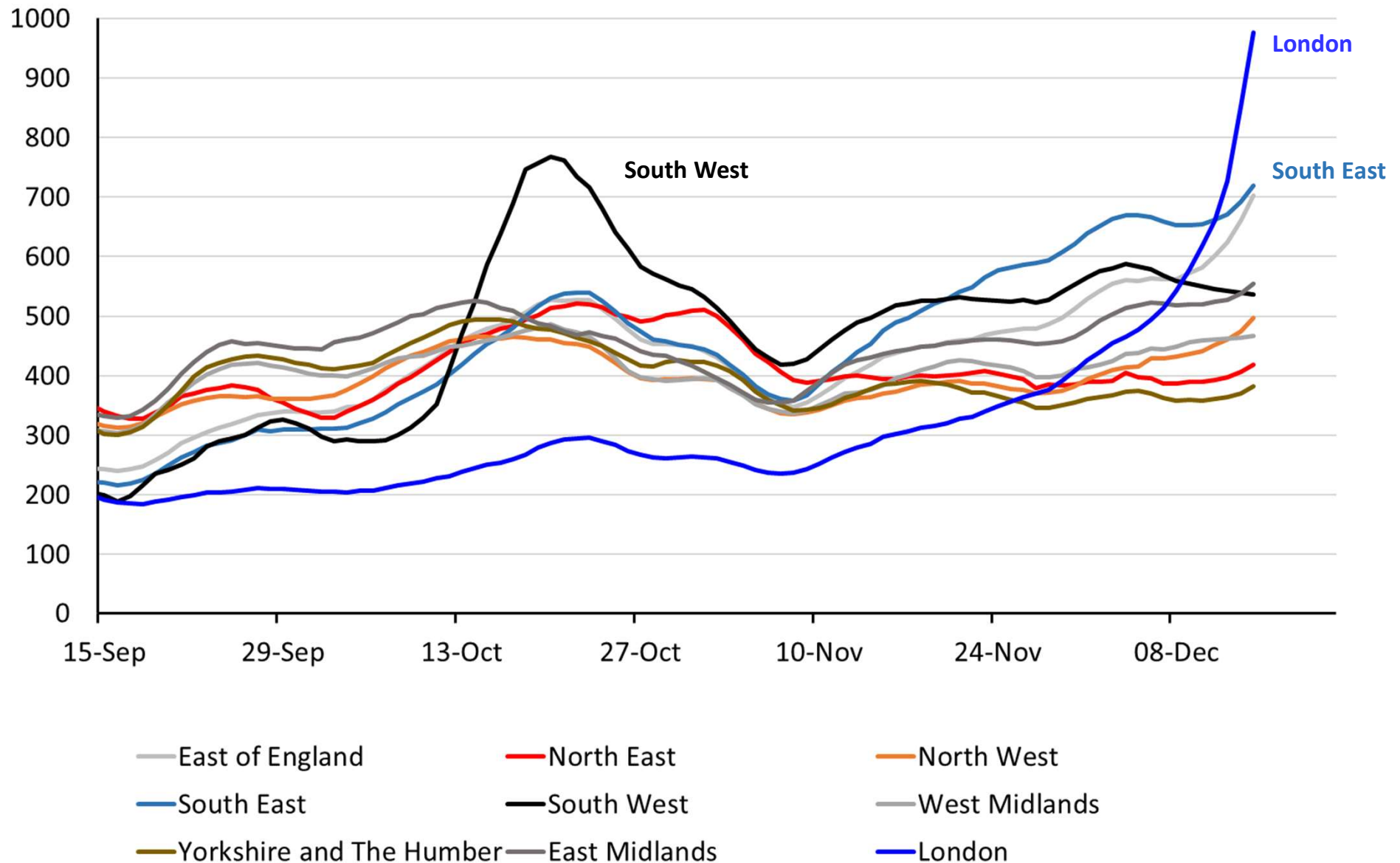


## Percentage of test results returned within 24 hour of test by week to week ending 12 December in England



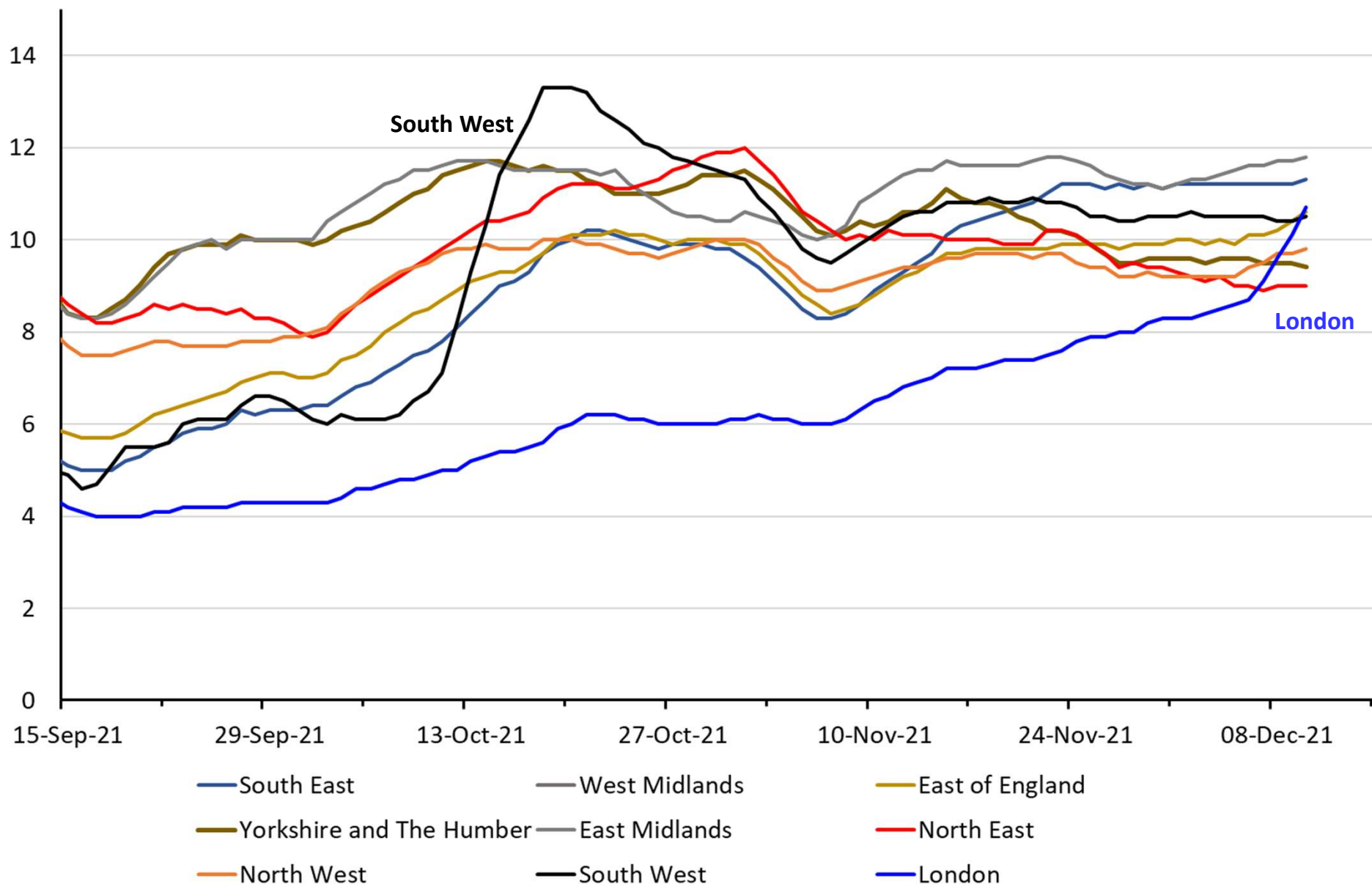
London

# Number of new England confirmed COVID-19 cases per 100,000 people per rolling 7 days by region to 14th December (most recent few days NOT COMPLETE!)



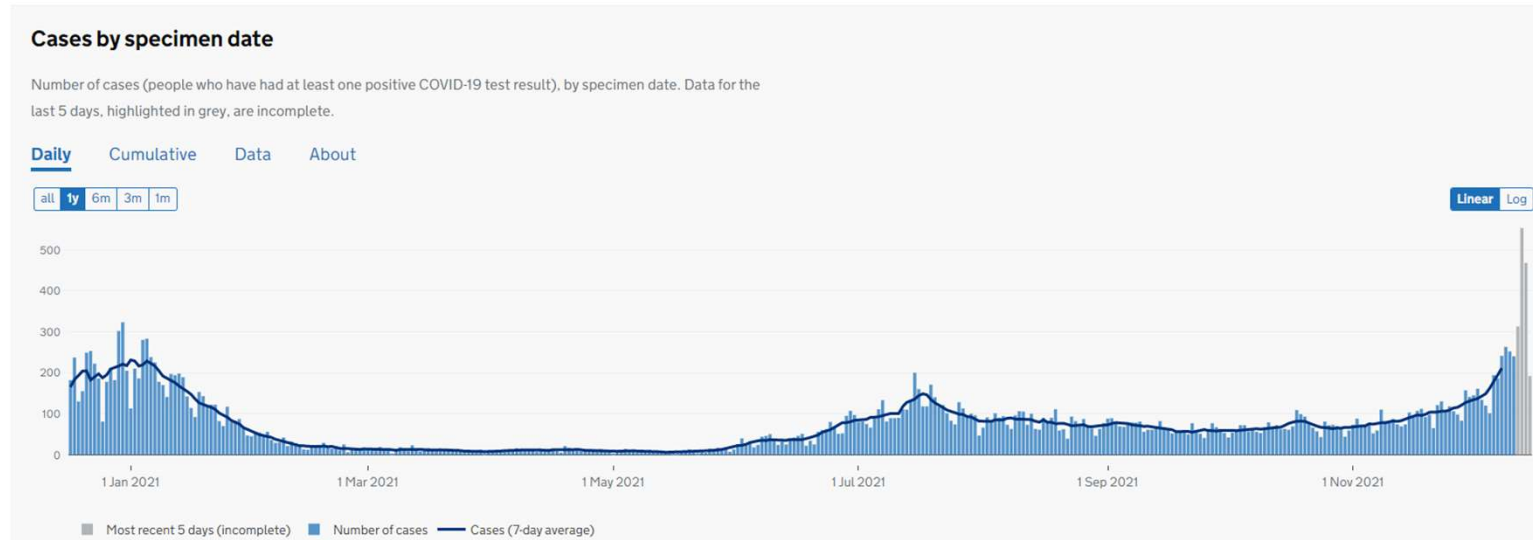


## Percentage of people testing positive for Covid by English region to 10 December

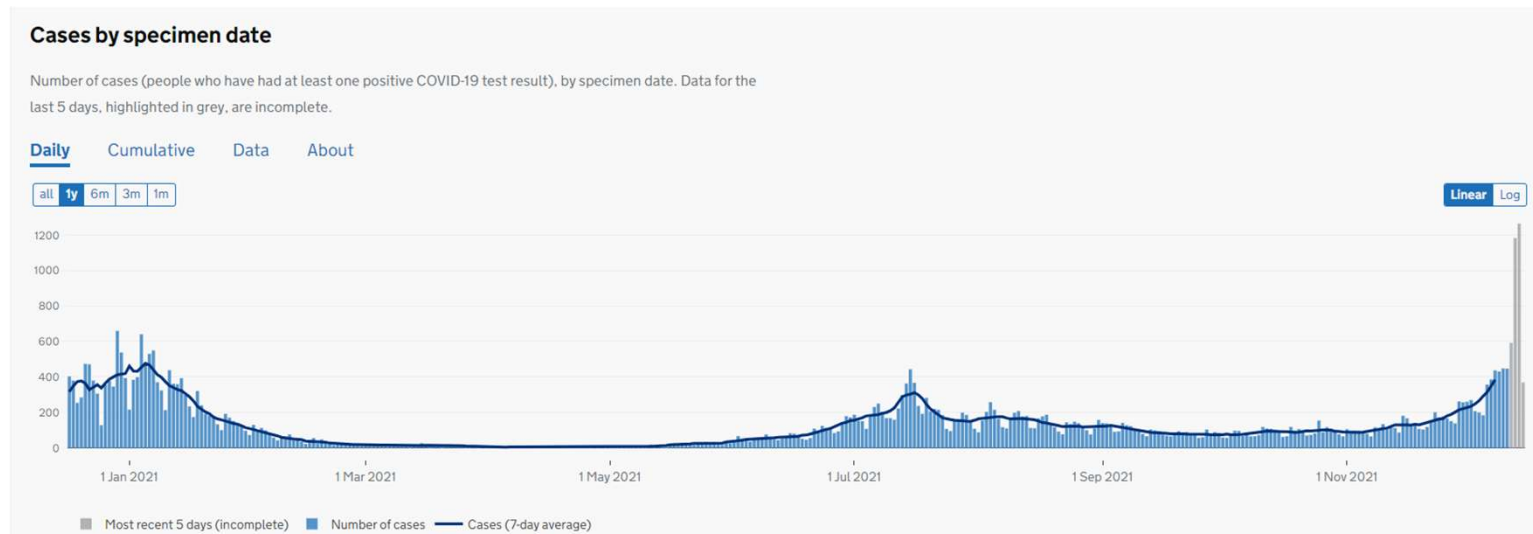


# Some London boroughs positives by date of test over pandemic

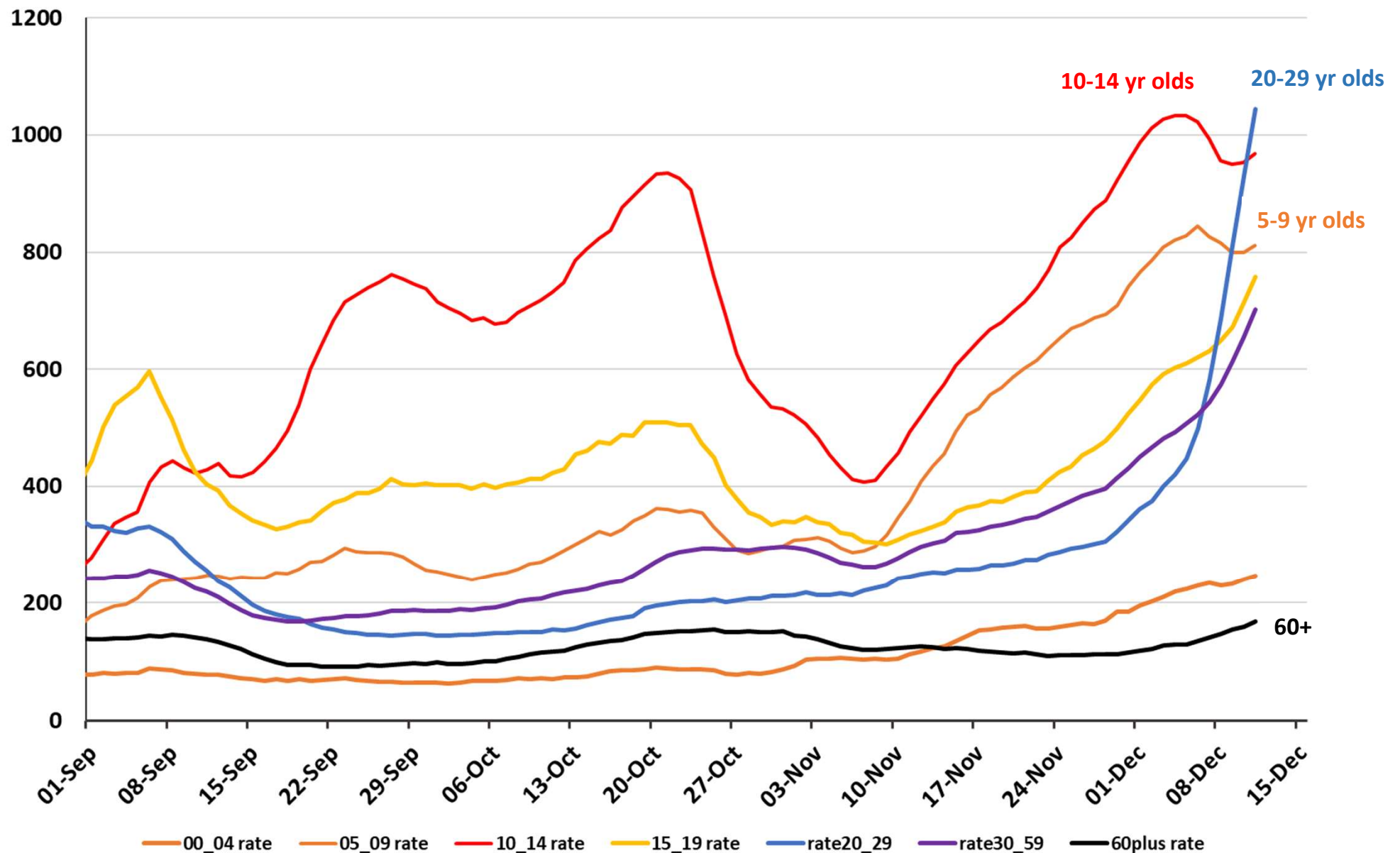
## Westminster



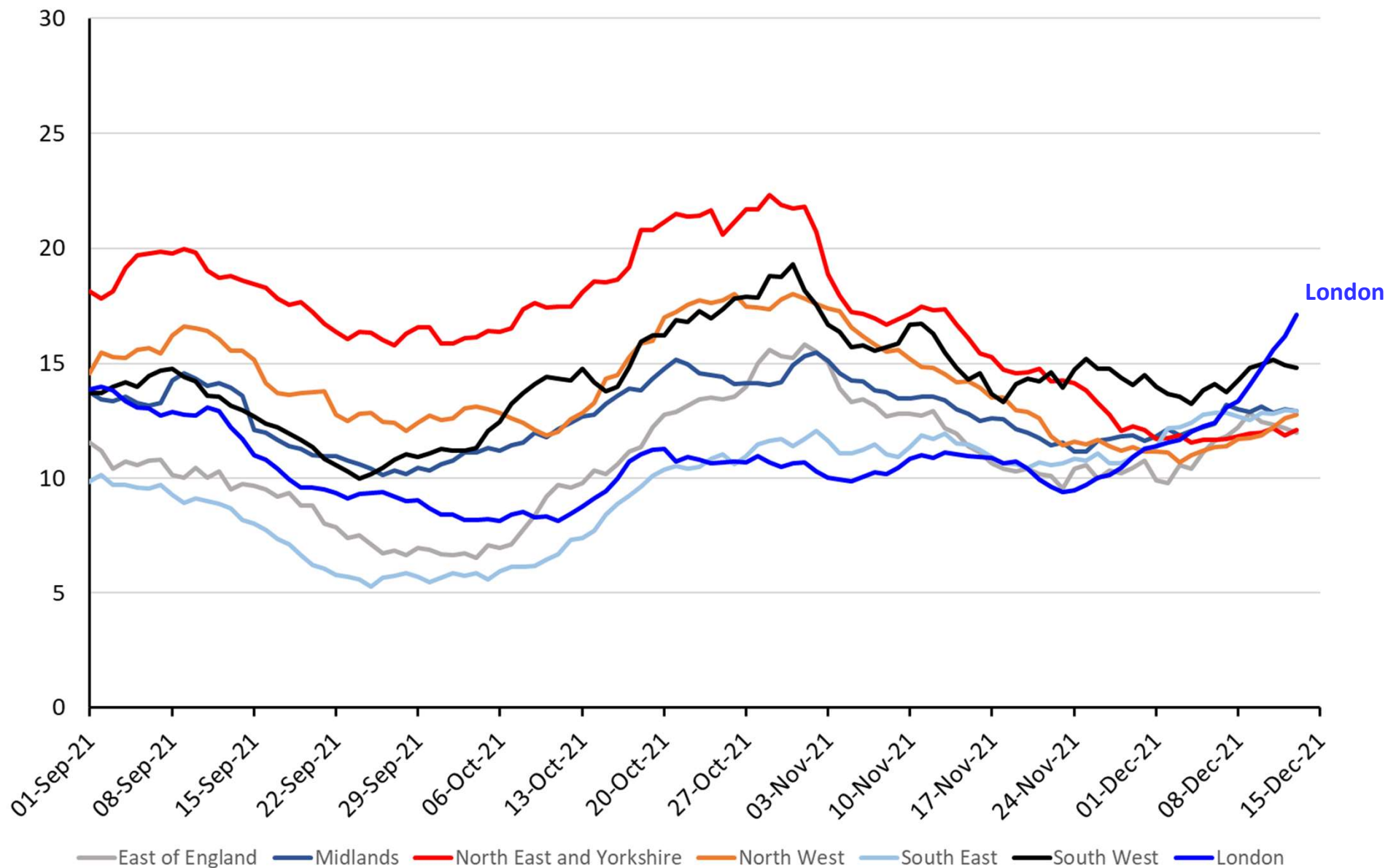
## Lambeth



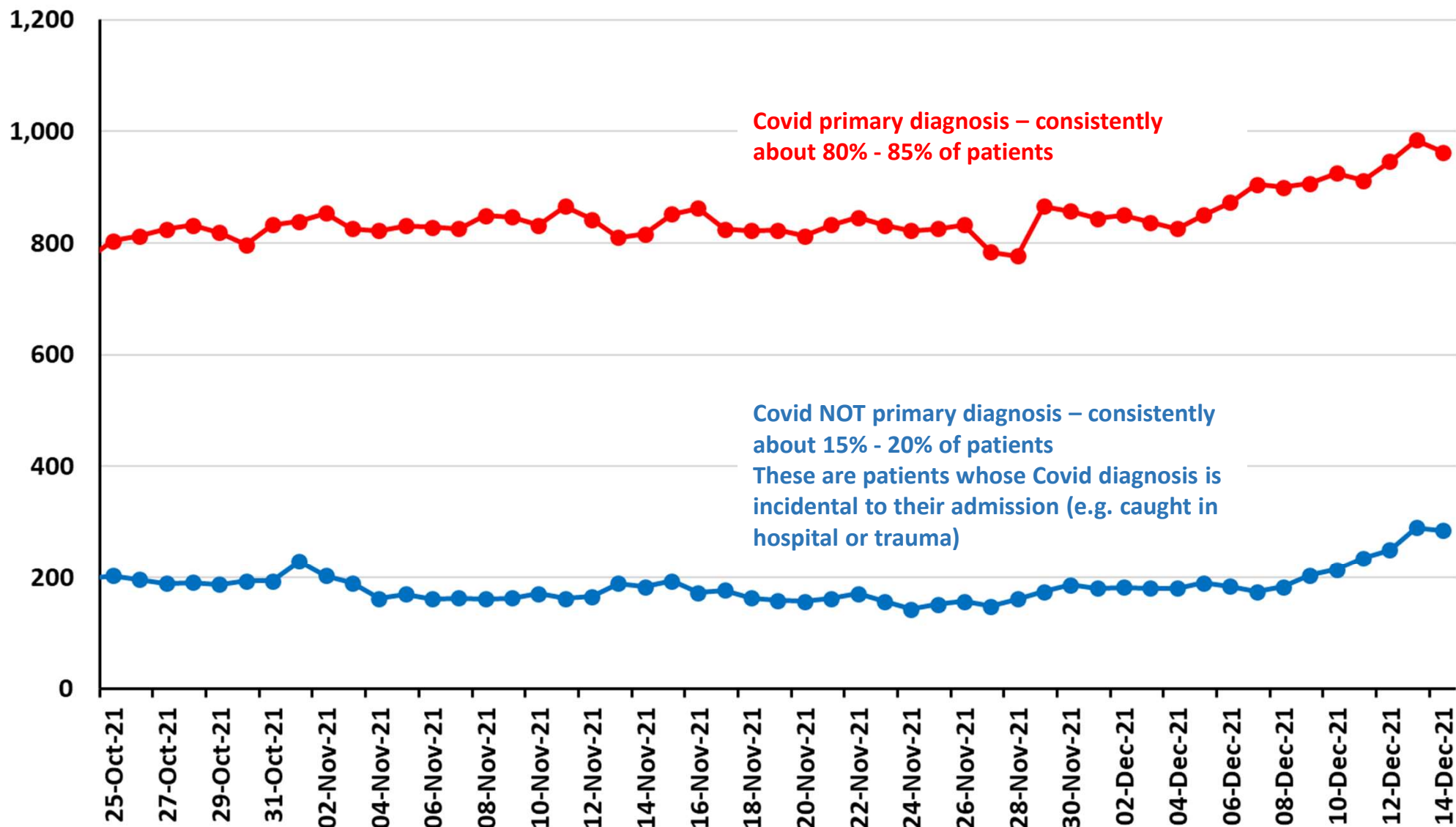
## Cases per 100,000 people per week for different age groups in London to 11 December



## 7-day average of daily number of new hospital admissions with COVID-19 per day / million people across different regions in England

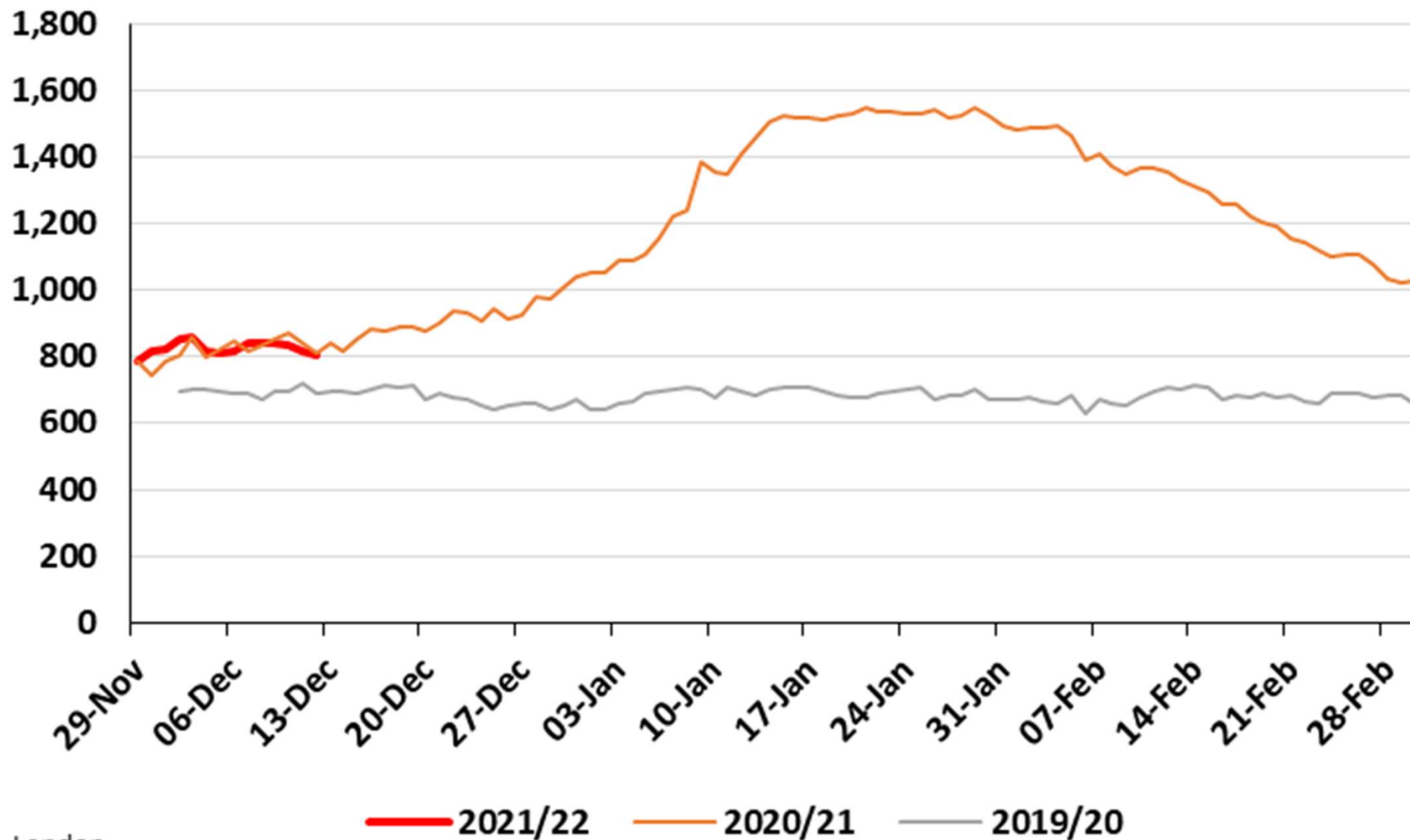


## Number of people in hospital with Covid in London by primary diagnosis



## Number of Occupied Adult Critical Care Beds in London

(Source: NHS England Urgent and Emergency Care Daily Situation Reports 2021-22 )



London

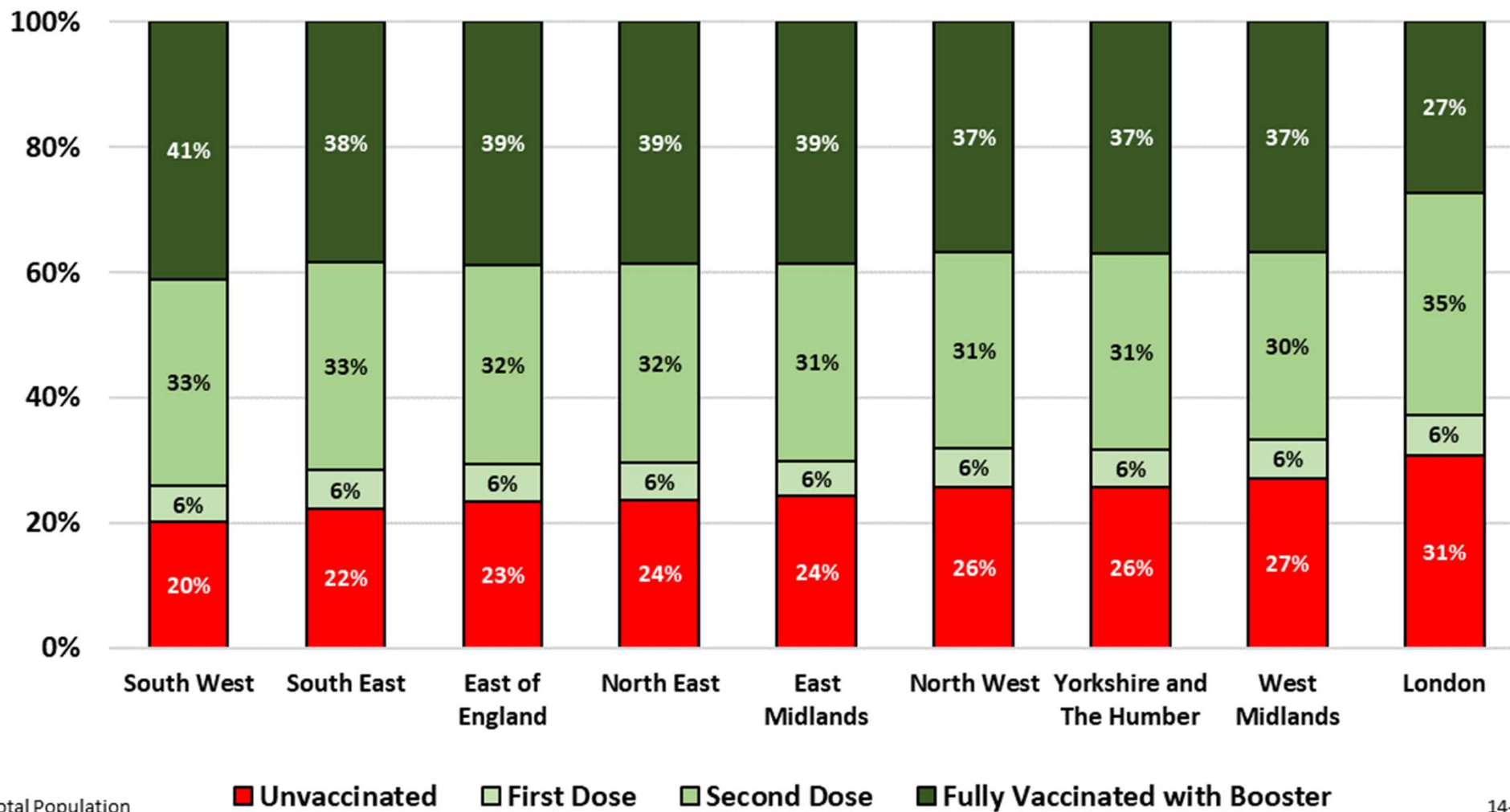
<https://www.england.nhs.uk/statistics/statistical-work-areas/uec-sitrep/urgent-and-emergency-care-daily-situation-reports-2021-22/>

Thank you to Bob Hawkins for the chart



# Percent of Total Population Unvaccinated First Dosed, Second Dosed and Fully Vaccinated for English Regions as at Dec 14

(Source: Covid Dashboard, MSOA IMD Data from Tom Forth, and Mid-2020 ONS Population Estimates)

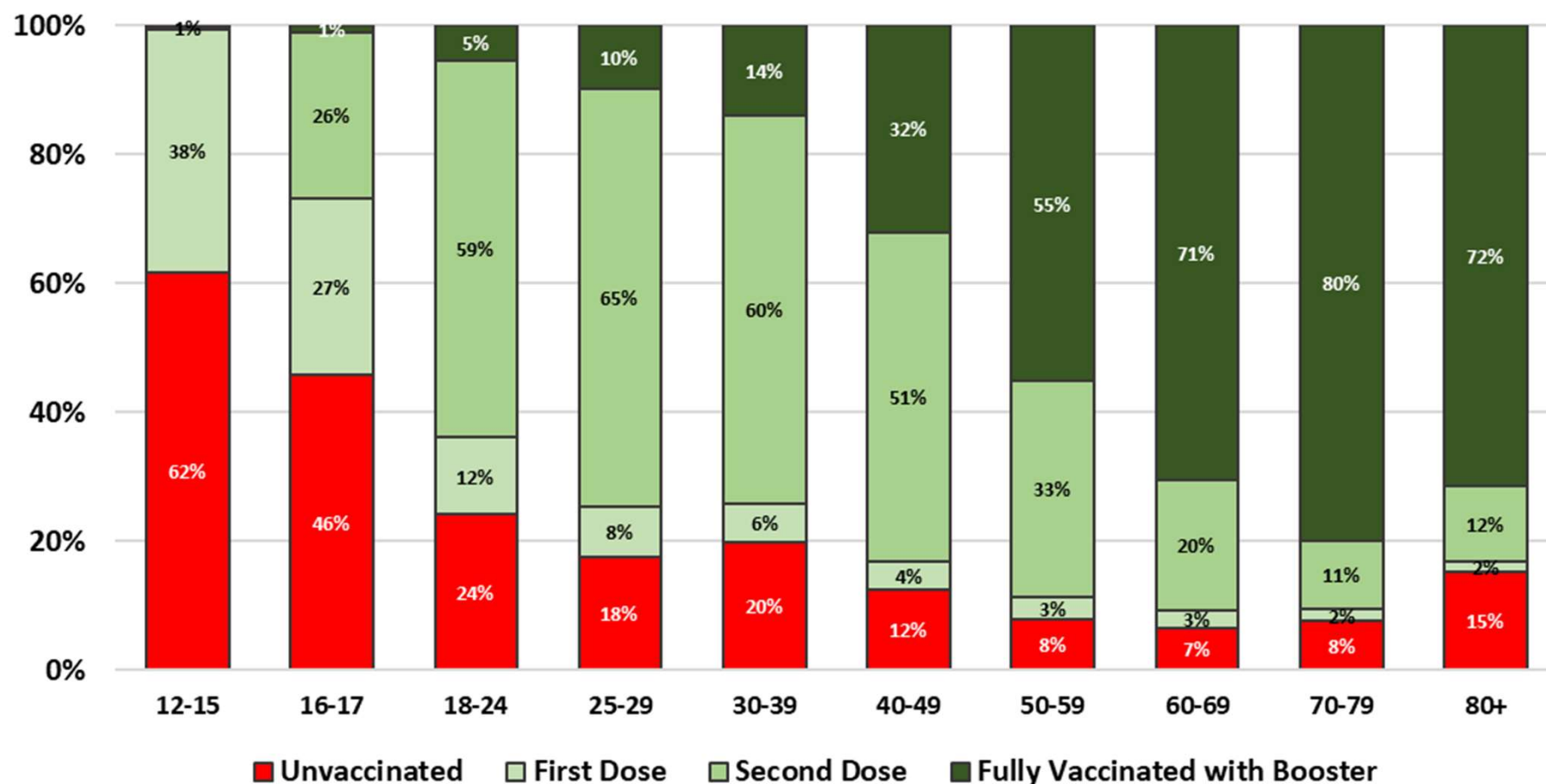


14-Dec

Thank you to Bob Hawkins for the chart

# Vaccination coverage by age in London as at Dec 14

(Source: Covid Dashboard, MSOA IMD Data from Tom Forth, and Mid-2020 ONS Population Estimates)



Total Population

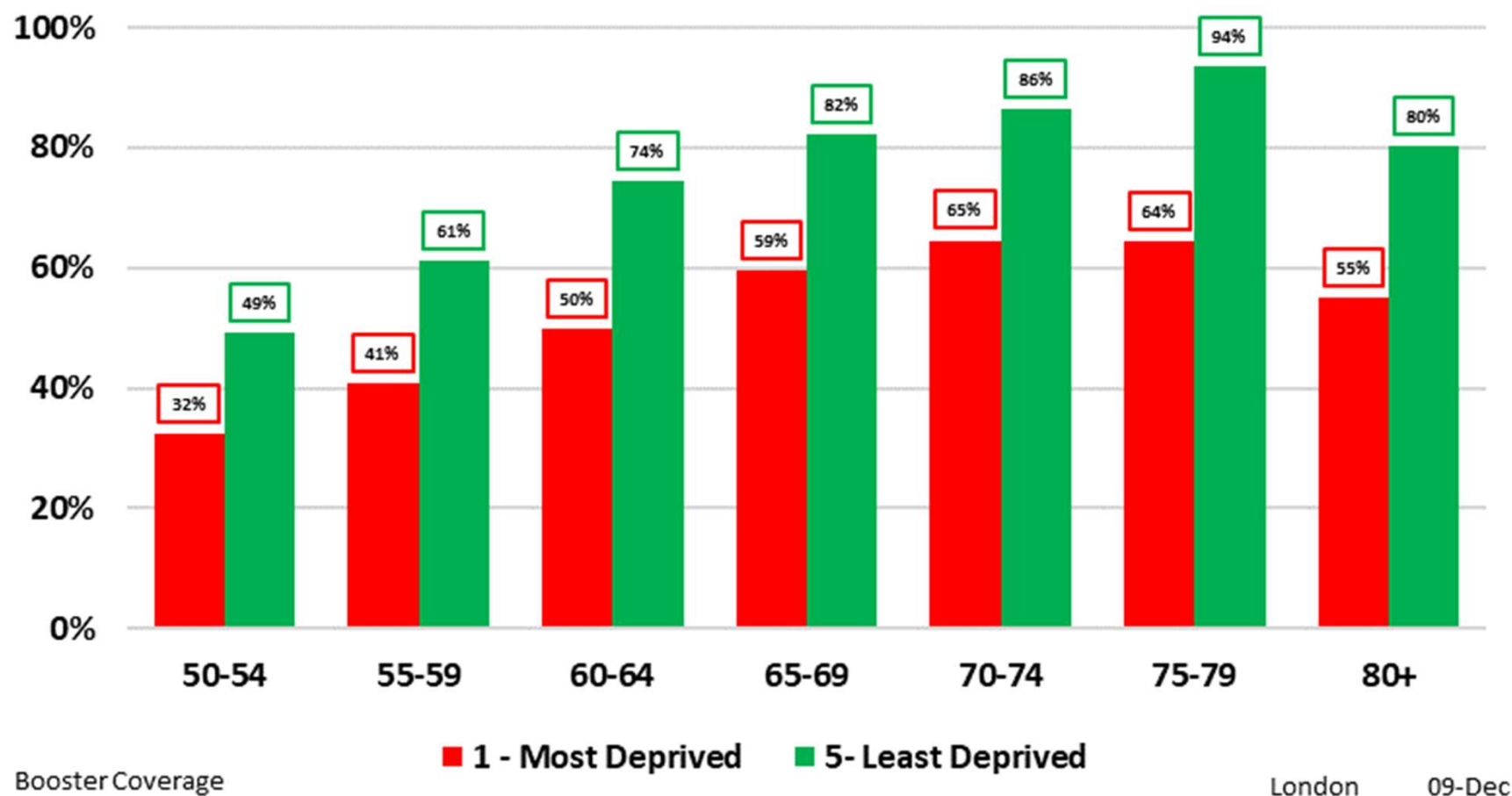
London 14-Dec

Thank you to Bob Hawkins for the chart



## Booster coverage by age and deprivation in London as at Dec 9

(Source: Covid Dashboard, MSOA IMD Data from Tom Forth, and Mid-2020 ONS Population Estimates)



Thank you to Bob Hawkins for the chart

- Cases in the UK higher than they've ever been and rising rapidly.
- Omicron is now the dominant variant in the UK.
- Increasing evidence that Omicron is very immune evasive and can spread very quickly.
- Even if Omicron has half the case-hospitalisation rate of Delta, in four more doublings consequent admissions would be higher than last January.
- Doubling times are less than 2 days right now – we need them to slow down.
- So we either hope it peaks on its own (no sign that it is) or we do something.
- We should do something.

The opportunity for early action has been lost and we can't afford to wait any longer.

We are calling for an **immediate circuit break** until **24<sup>th</sup> December**:

- No indoor gatherings between households (except for bubbles and other roadmap 2 exemptions). Indoor hospitality and entertainment shut.
- Outdoor meetings of rule of 6, outdoor hospitality, indoor retail open.
- All close contacts of cases must isolate for 10 days, with financial & practical support
- Continue vaccination effort

Allow household mixing over 25-28<sup>th</sup> December and government to reassess situation over Christmas in light of latest evidence about what needs to happen after.

We cannot prevent infections that have happened this week, but we can prevent them next week. Doing so would save lives, protect the NHS **and** enable people to have a much safer Christmas.

We must also accelerate vaccination of people in **all** countries. The UK should support vaccine patent waivers and transfer of expertise and technology

<https://www.independentsage.org/emergency-statement-on-omicron-15-december-2021/>

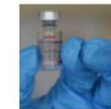
# Experts Identify 100 Plus Firms to Make Covid-19 mRNA Vaccines

US, German Governments Should Press Vaccine Makers to Transfer Technology Widely

**Vaccine Experts Identify Over 100 Companies  
with Potential to Make mRNA Covid-19 Vaccines**



## MORE READING



December 2, 2021 | Commentary

**Rich Countries Must Stop Blocking the  
Covid Vaccine Patent Waiver**

## MOST VIEWED

1 December 16, 2021 | Report  
**Ethiopia: New Wave of Atrocities in  
Western Tigray**



2 December 16, 2021 | News Release  
**El Salvador: Critics Blocked on  
Social Media**



<https://www.hrw.org/news/2021/12/15/experts-identify-100-plus-firms-make-covid-19-mrna-vaccines>