

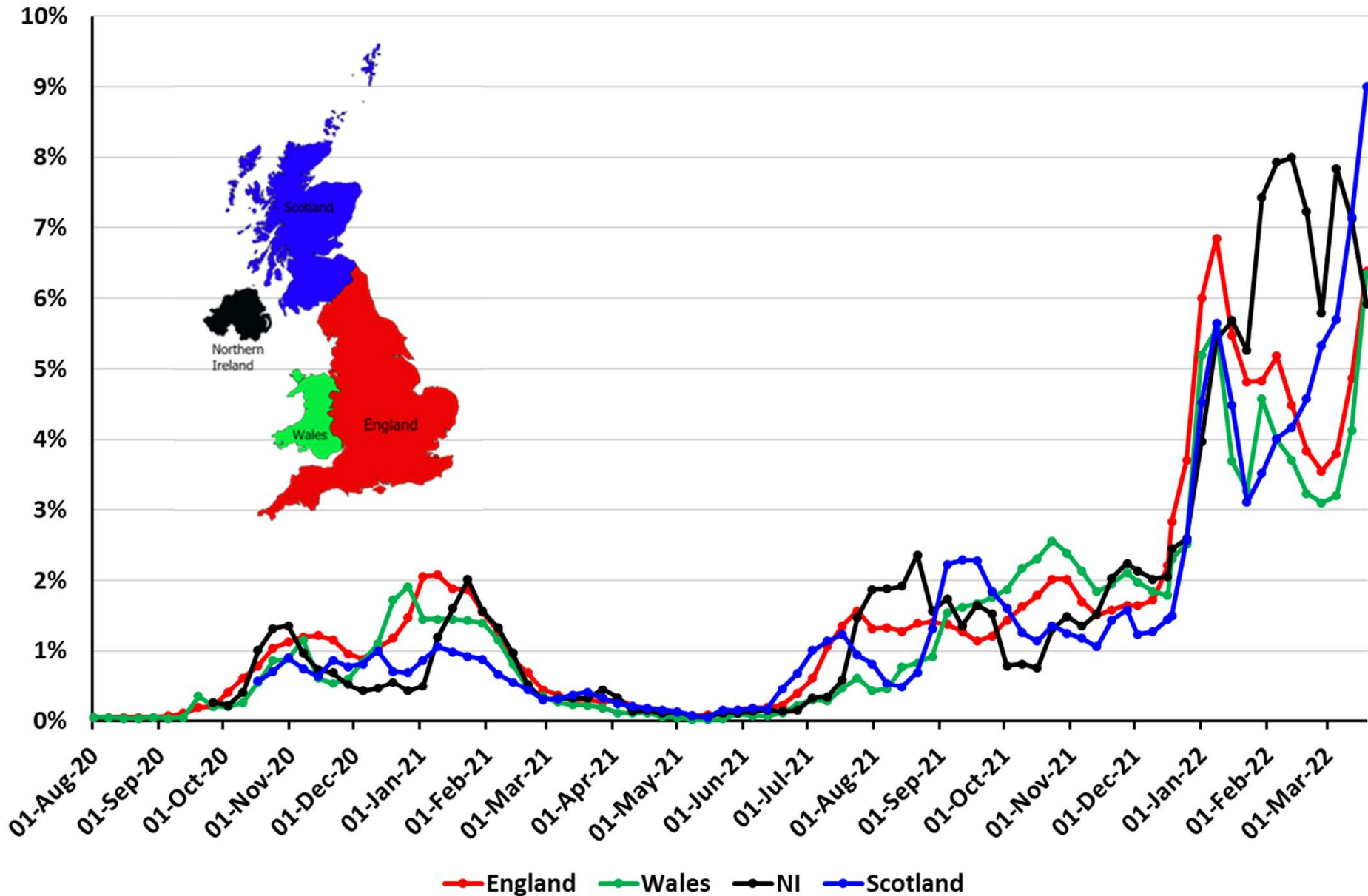
Latest numbers on COVID-19 in the UK – 25 March 2022

1. Prevalence of Covid
2. Hospitalisations
3. Deaths
4. Schools
5. Behaviours

With many thanks to Bob Hawkins for his help in collating the data

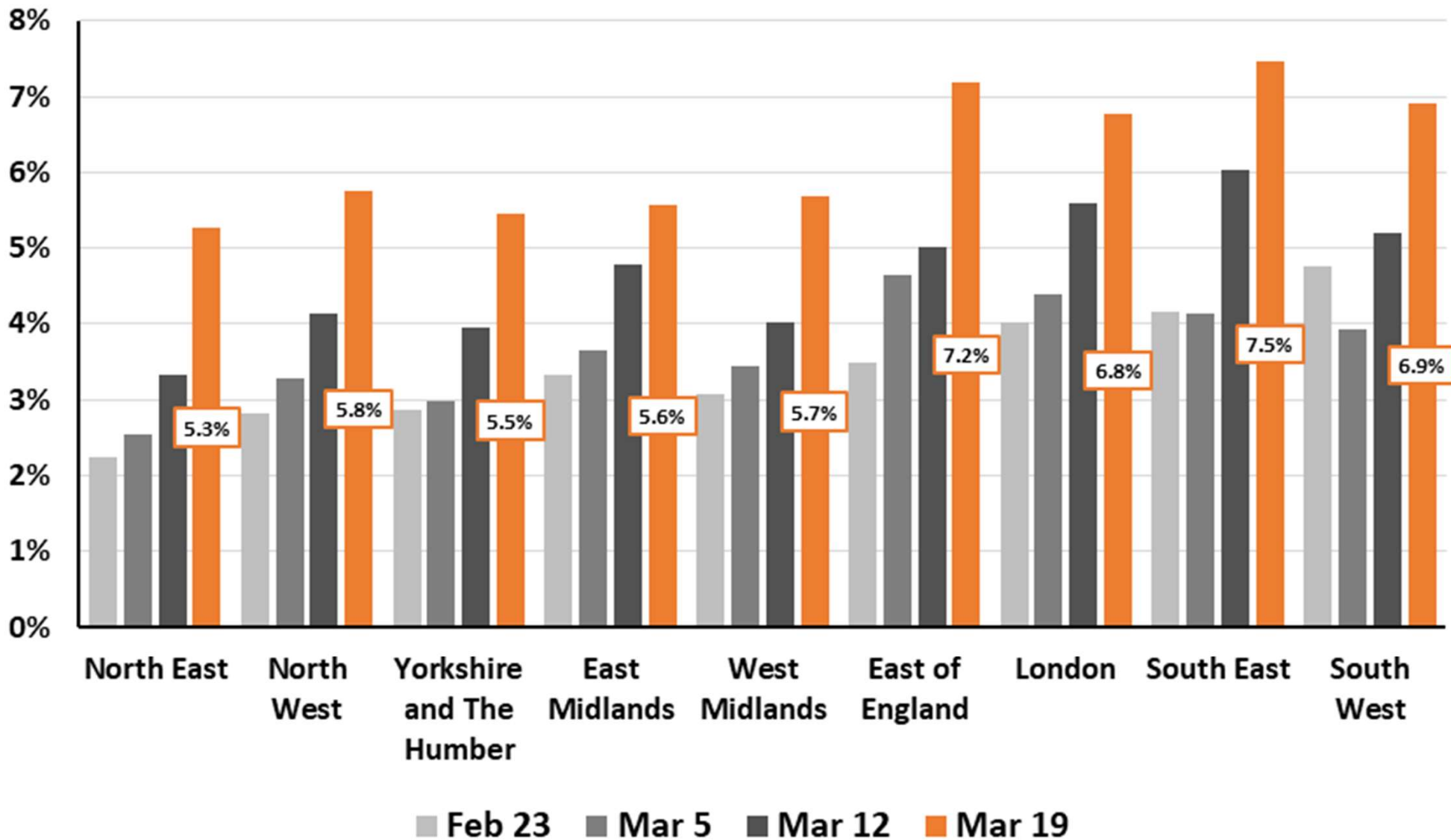
Prevalence of Covid

Percent of population testing positive each week by nation: 1 Aug 2020 to 19 March 2022 ONS Infection Survey (random testing)



Percent Testing Positive by Region: 19 Mar vs Prior Weeks

(Source: Coronavirus (COVID-19) Infection Survey results, UK: 25 Mar 2022)



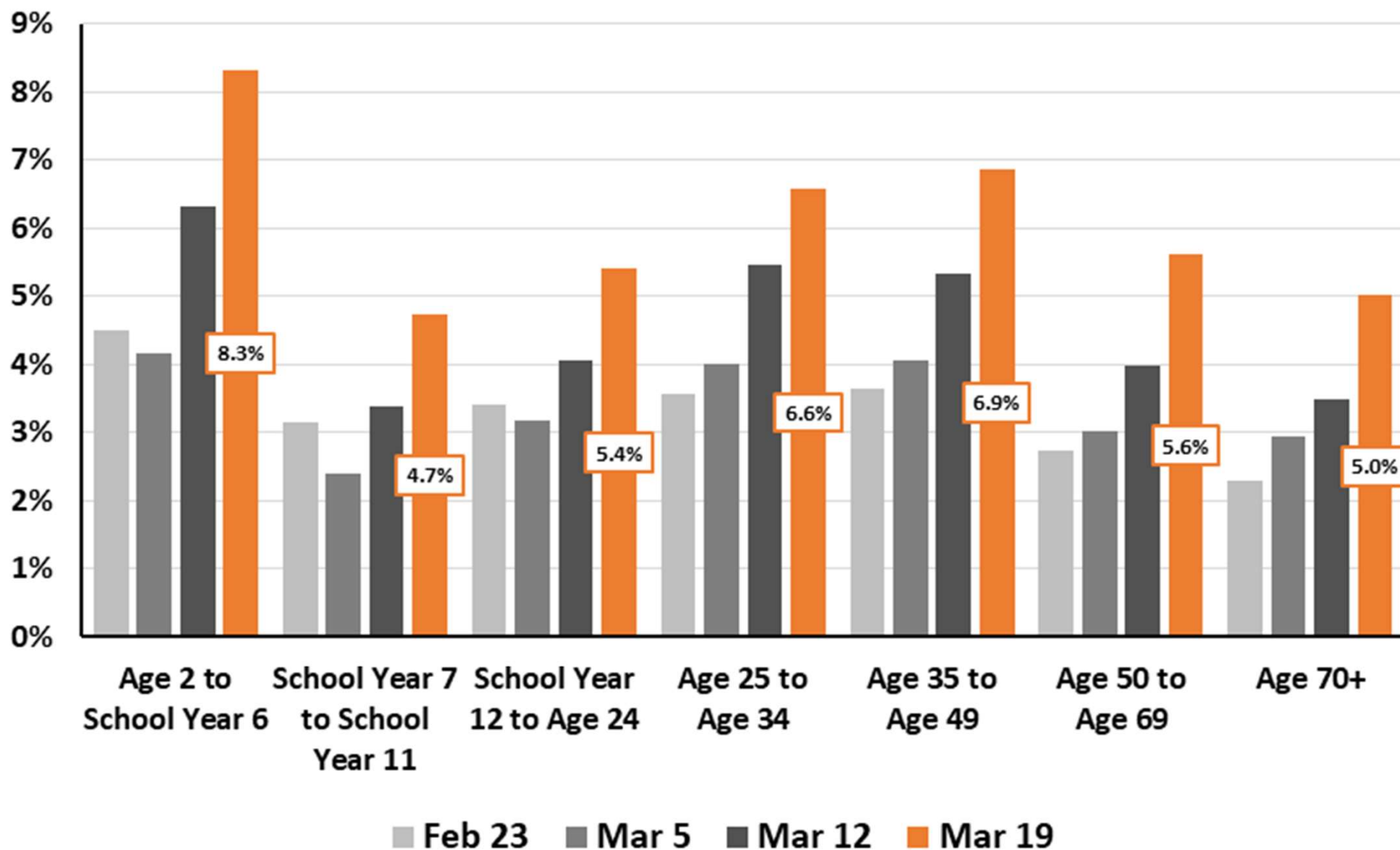
Data from

<https://www.ons.gov.uk/peoplepopulationandcommunity/healthandsocialcare/conditionsanddiseases/bulletins/coronaviruscovid19infectionsurvey/pilot/25march2022> .

Thanks to Bob Hawkins for the chart

Percent Testing Positive by Age for England: 19 Mar vs Prior Weeks

(Source: Coronavirus (COVID-19) Infection Survey results, UK: 25 Mar 2022)

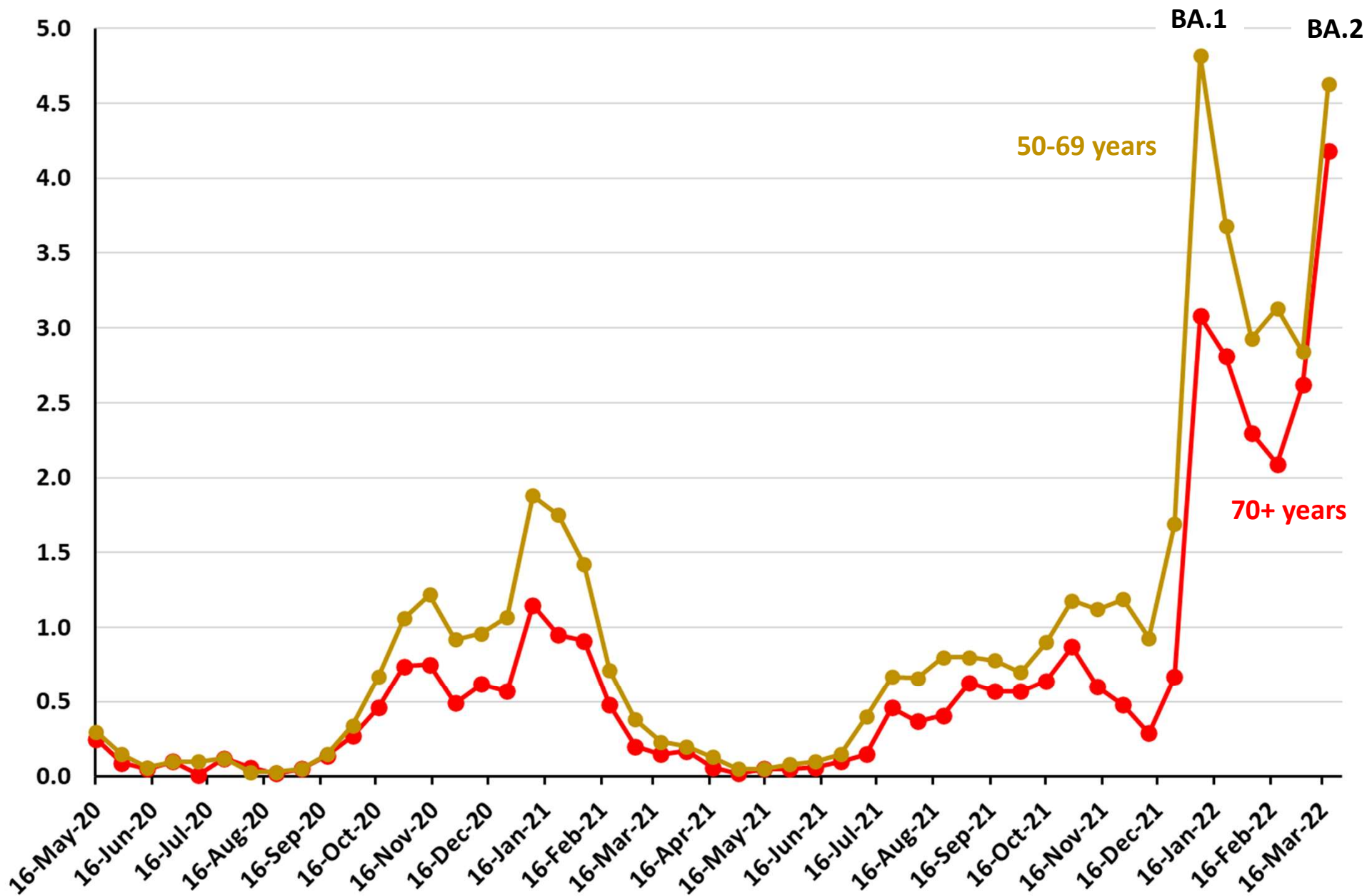


Data from

<https://www.ons.gov.uk/peoplepopulationandcommunity/healthandsocialcare/conditionsanddiseases/bulletins/coronaviruscovid19infectionsurveyplot/25march2022> .

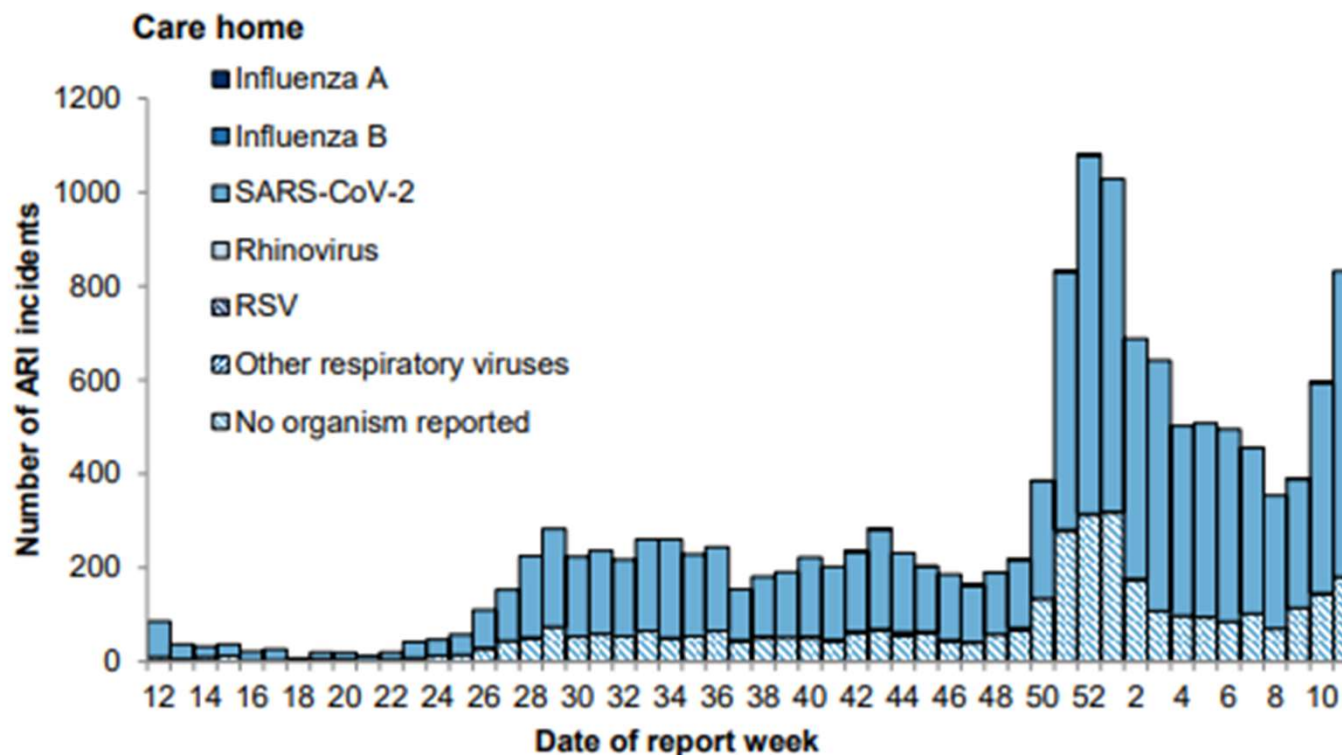
Thanks to Bob Hawkins for the chart

ONS estimates of percentage of **people aged 50-69** and **people over 70** testing positive (prevalence) over 2 week periods from 3 May 2020 – 19 March 2022



Outbreaks in Care Homes increasing

Figure 21: Number of acute respiratory infection (ARI) incidents in care homes by virus type, England



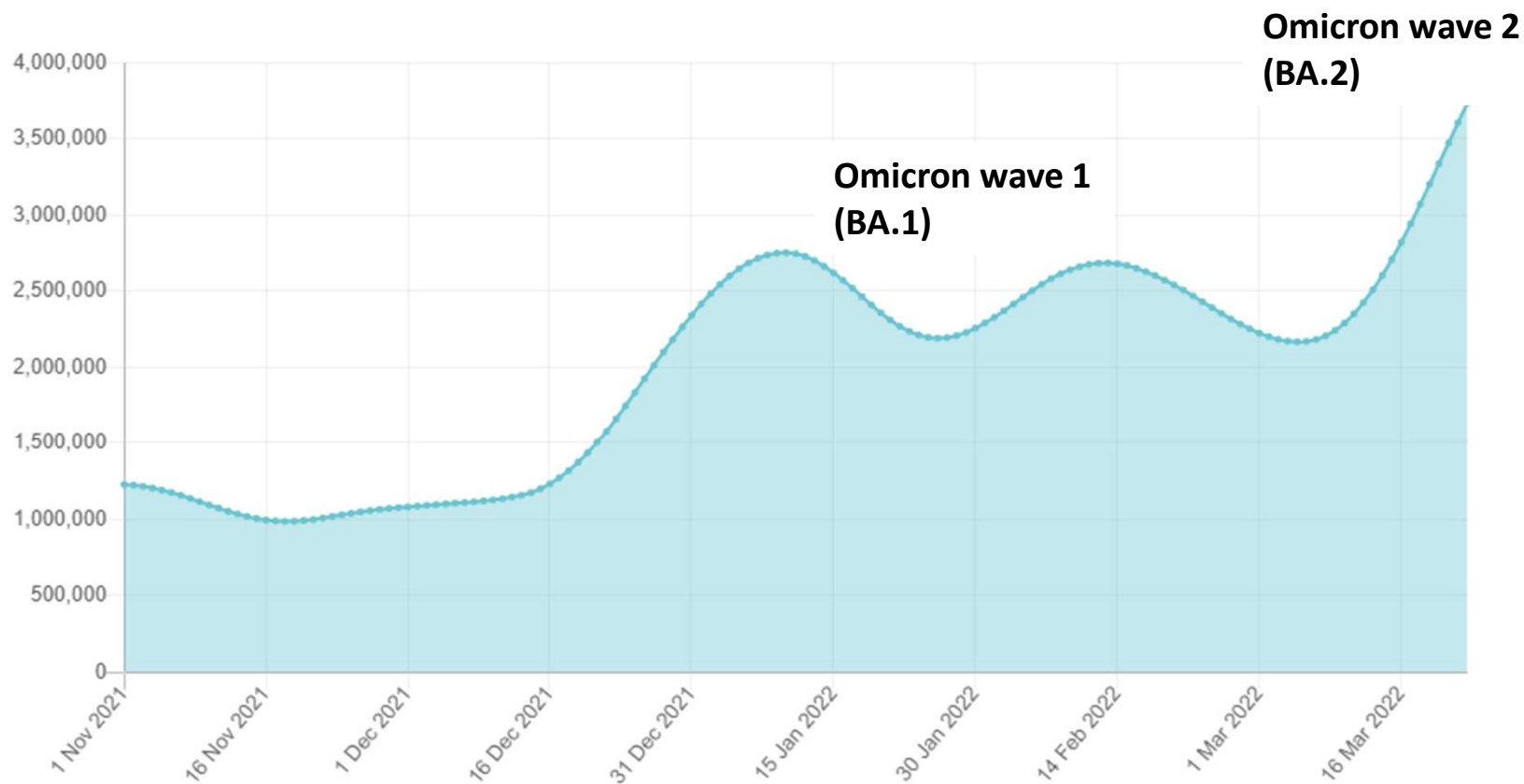
UKHSA weekly surveillance report:

https://assets.publishing.service.gov.uk/government/uploads/system/uploads/attachment_data/file/1062976/Weekly_Flu_and_COVID-19_report_w12.pdf

Estimated prevalence of Covid in UK each day from the Zoe tracker app

Day by day evolution of the infection across the UK

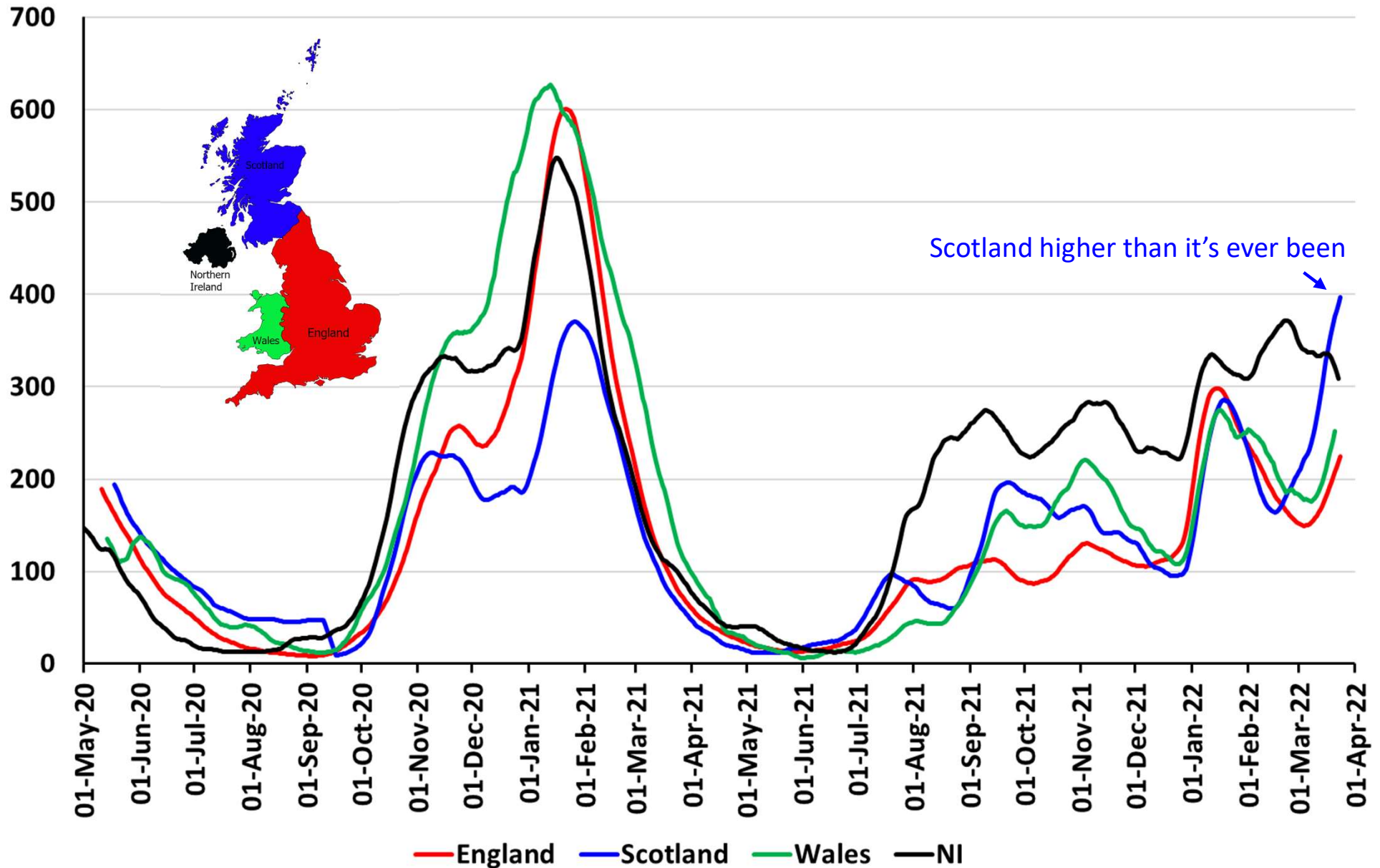
This chart shows the number of people calculated to have COVID symptoms on each day since the 11th June 2020.



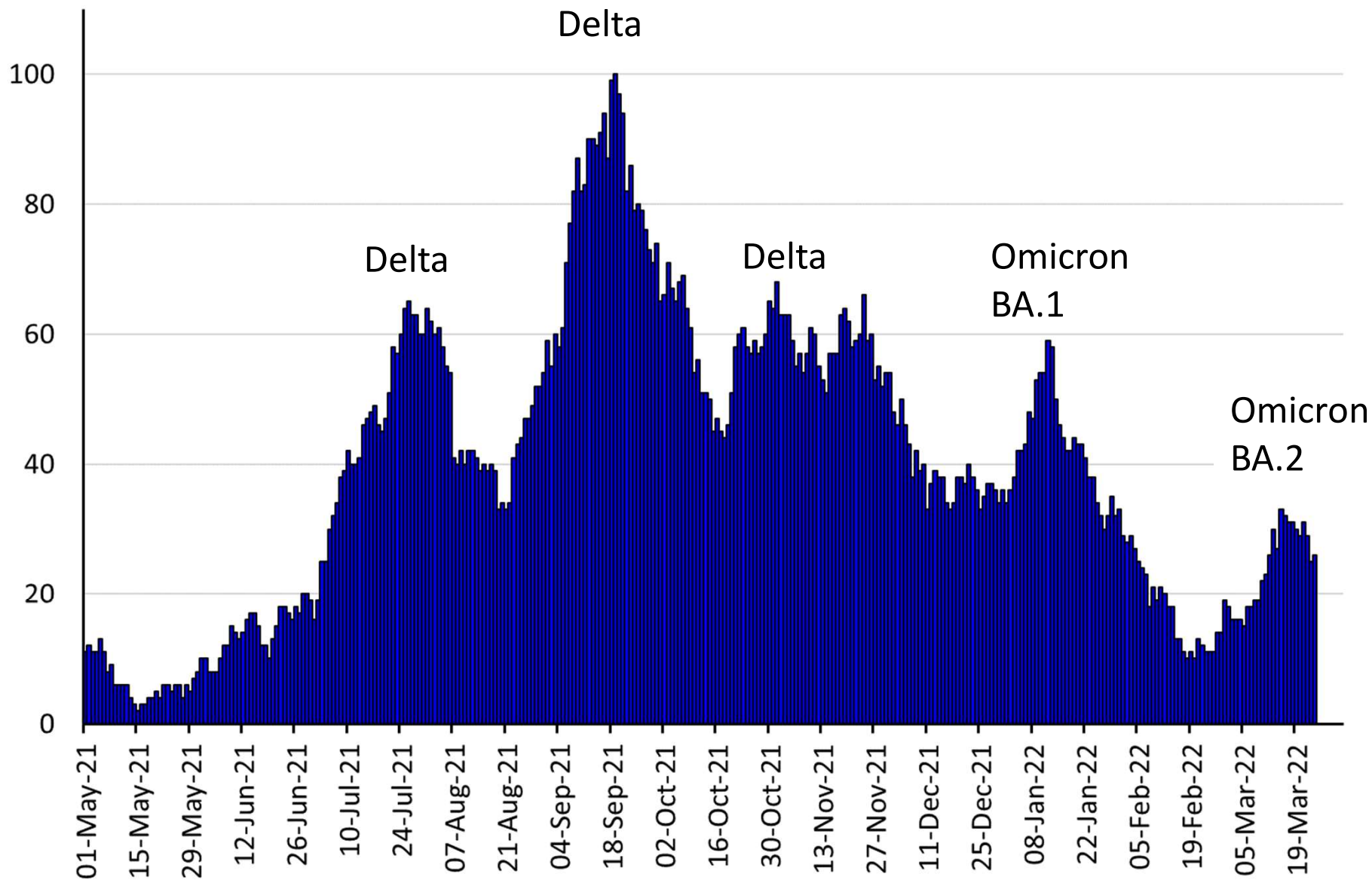
<https://covid.joinzoe.com/data>

Hospitals

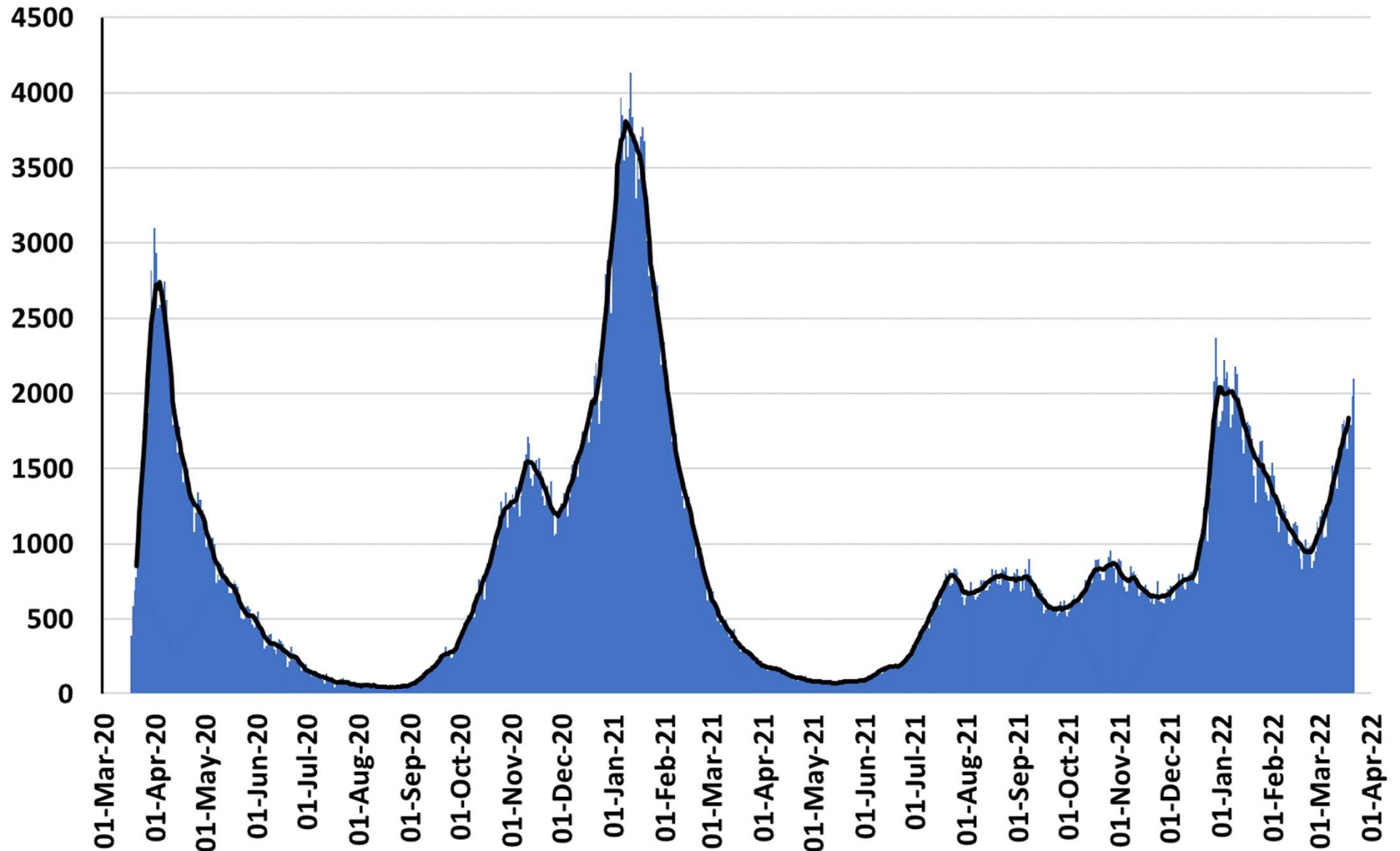
Number of people in hospital with Covid per million people – UK nations 7 day rolling average to 24 Mar 2022



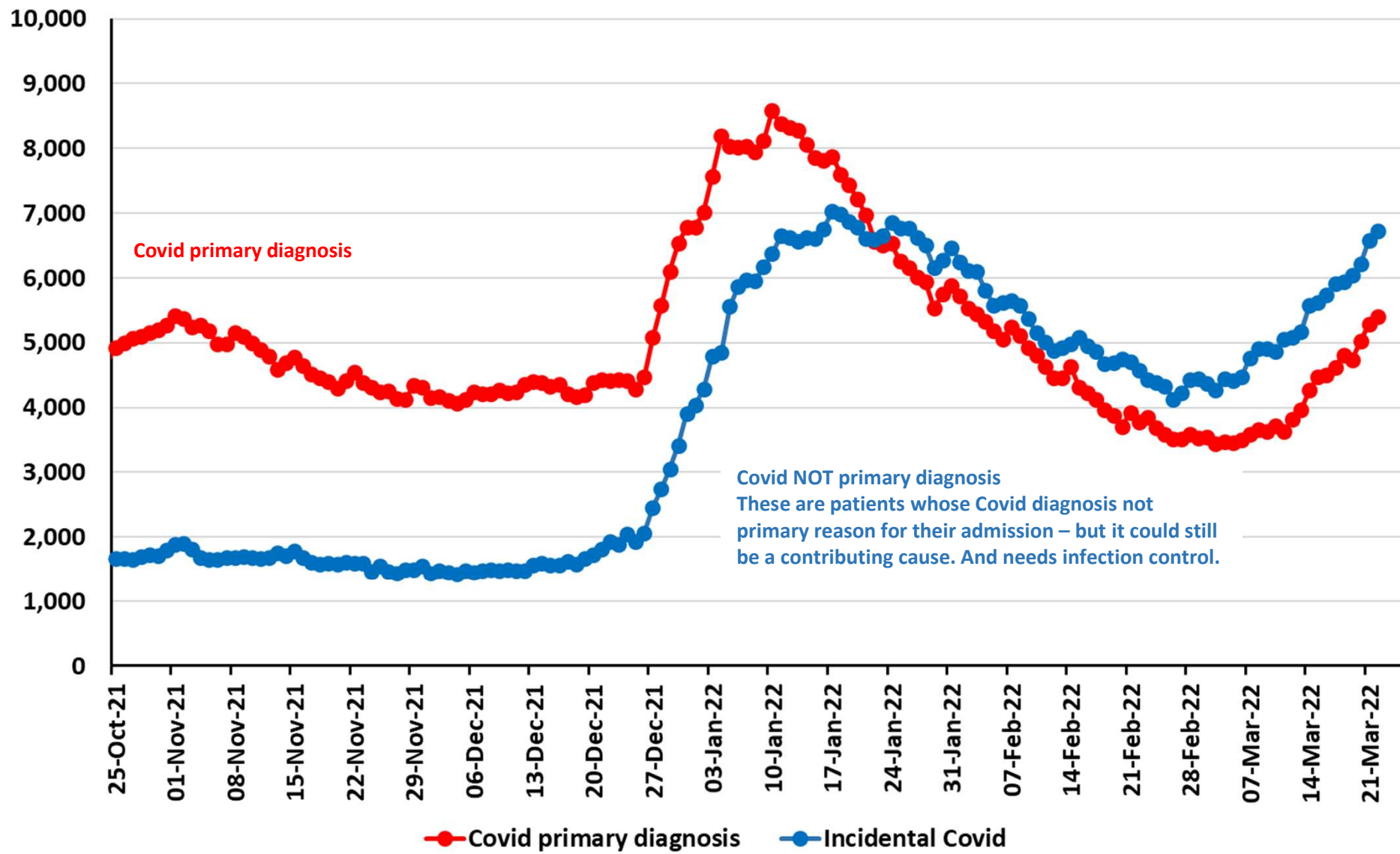
Number of people with Covid-19 in mechanically ventilated beds in Scotland to 24 March 2022



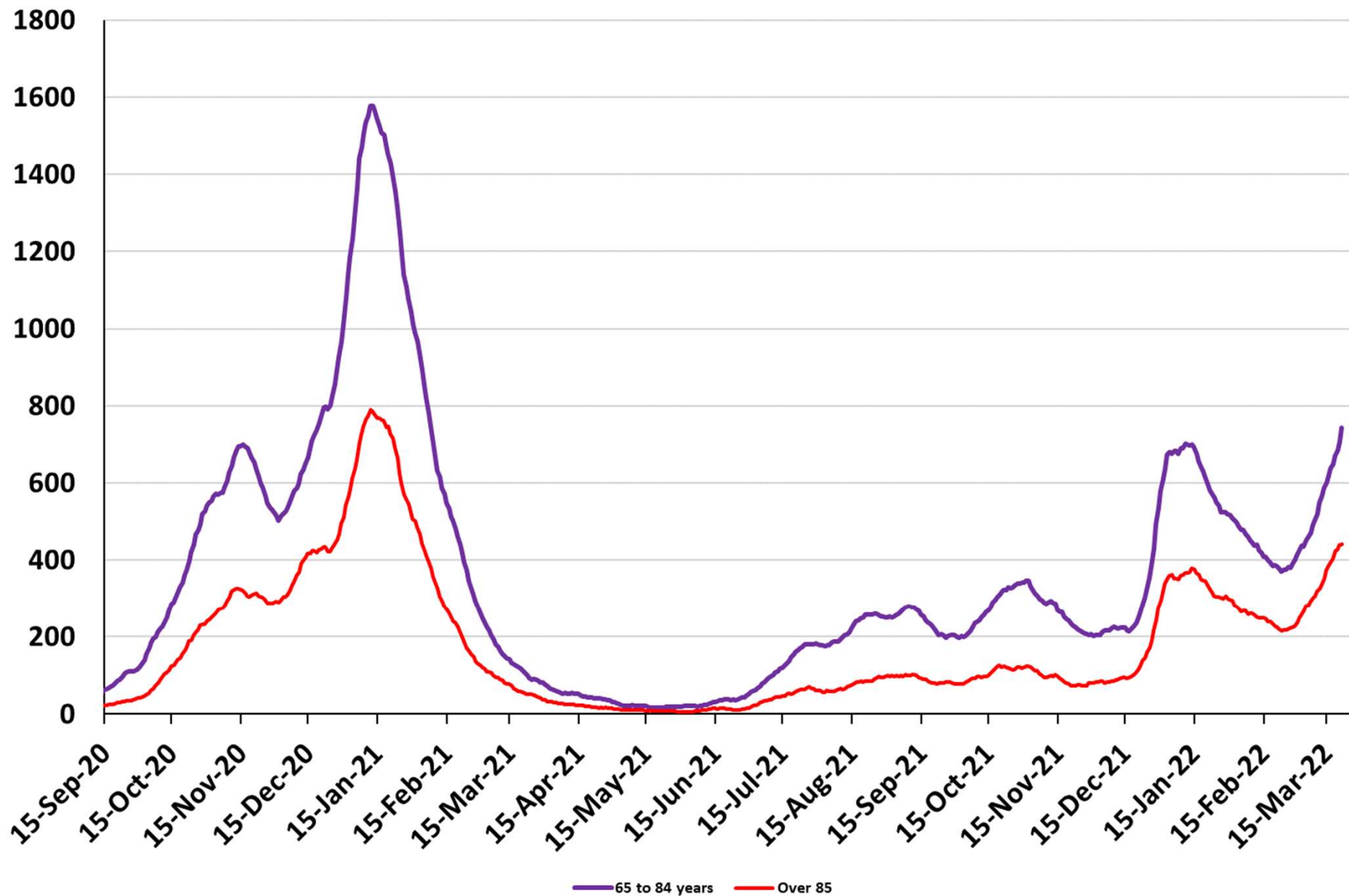
Number of daily hospital admissions with Covid in England to 22 Mar 2022



Number of people in hospital with Covid in England by primary reason to 24 March 2022



Hospital admissions per day in England for 65-84 year olds and over 85s since September 2020



UKHSA latest vaccine efficacy report for Omicron by age

**Definitively respiratory
Covid admissions**

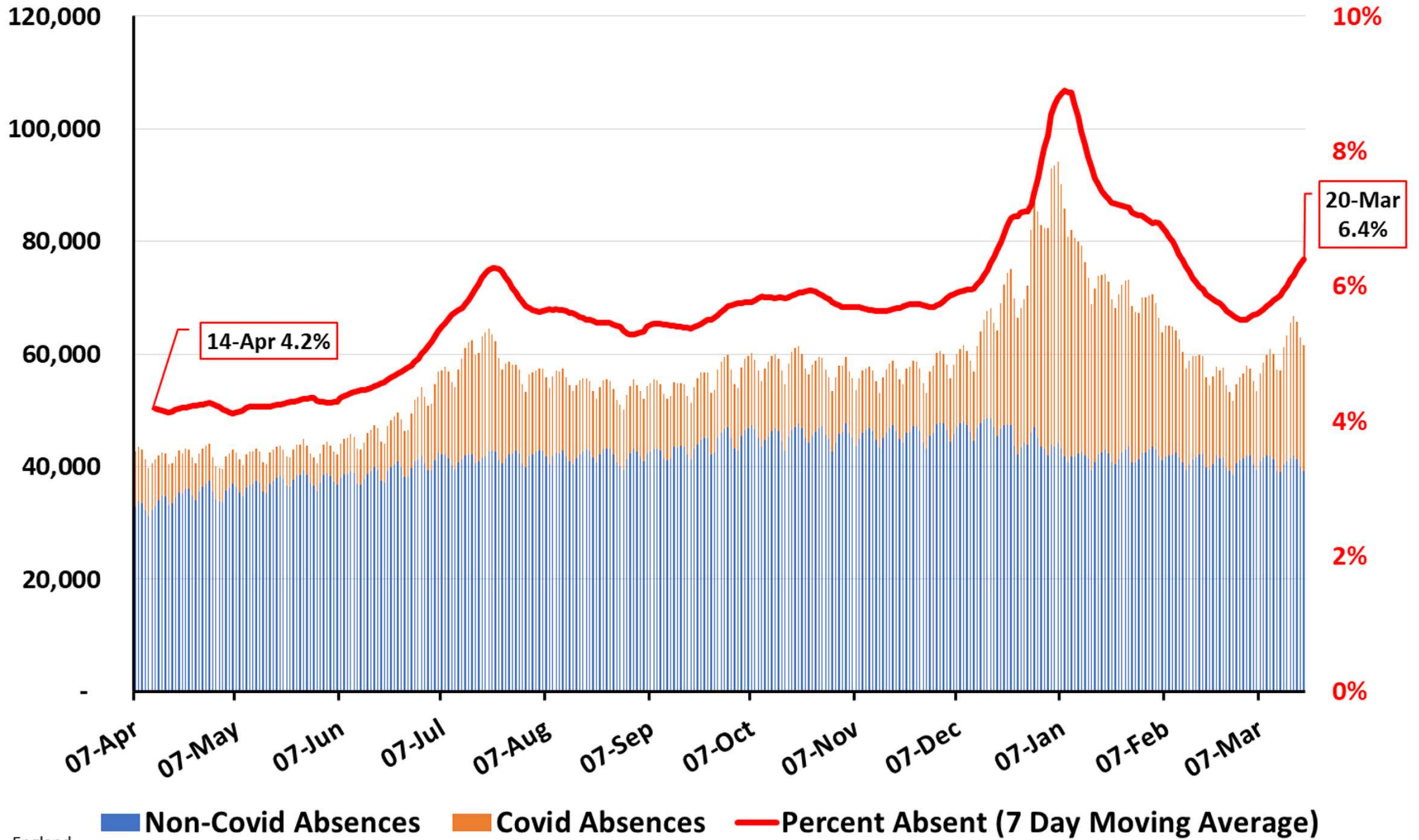
**Definitively *serious*
respiratory Covid admissions**

65+				
	Interval	VE	VE	VE
Dose 1	0 to 27		43.9 (-41 to 77.7)	
	28+		53.4 (36.3 to 65.9)	78.3 (43.7 to 91.7)
Dose 2	0 to 13		0 (100 to 100)	
	14 to 174	77.8 (45 to 91)	82.3 (74.3 to 87.8)	90.9 (72.6 to 97)
	175+	66.7 (43.4 to 80.4)	57.7 (49.6 to 64.4)	73.4 (55.1 to 84.3)
Booster	0 to 6	85.8 (61.5 to 94.7)	77.9 (65.3 to 85.9)	89.2 (63.1 to 96.8)
	7 to 13	92.3 (76.3 to 97.5)	84.7 (76 to 90.2)	94.7 (71.6 to 99)
	14 to 34	92.4 (86 to 95.8)	91.3 (89.1 to 93.1)	95.8 (91.3 to 97.9)
	35 to 69	87 (79.2 to 91.8)	89.3 (87.3 to 90.9)	92.8 (88.4 to 95.6)
	70 to 104	84 (74.6 to 89.9)	88.1 (86.1 to 89.9)	92.5 (88.1 to 95.2)
	105+	76.9 (60.6 to 86.4)	85.3 (82.4 to 87.6)	86.8 (77.1 to 92.3)

waning

From https://assets.publishing.service.gov.uk/government/uploads/system/uploads/attachment_data/file/1063023/Vaccine-surveillance-report-week-12.pdf

Number and Percent of Staff Absent from NHS Acute Hospital Trusts in England 7 Apr 2021– 20 Mar 2022



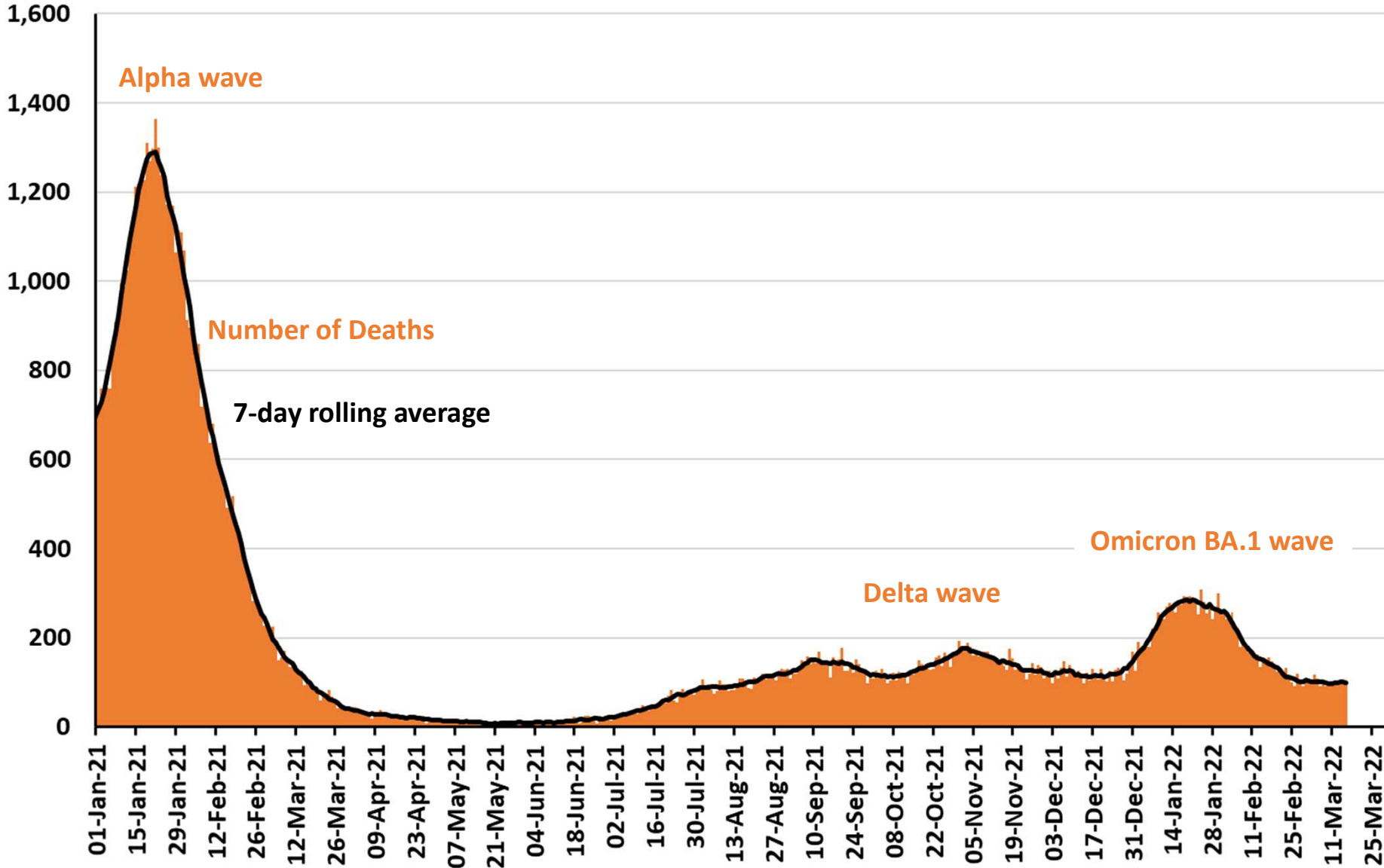
England

<https://www.england.nhs.uk/statistics/statistical-work-areas/uec-sitrep/urgent-and-emergency-care-daily-situation-reports-2021-22/>

Thanks to Bob Hawkins for the chart

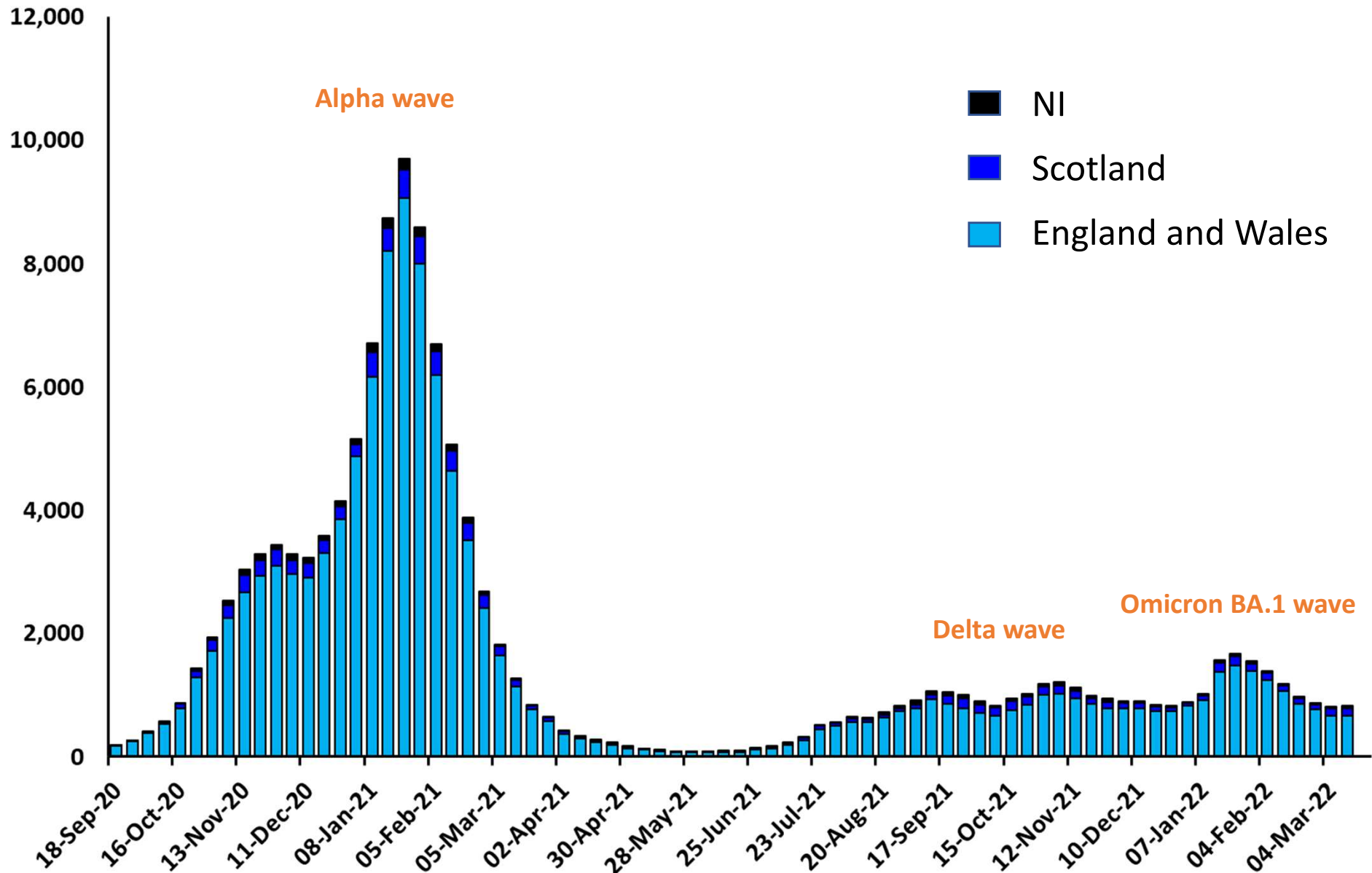
Deaths

Number of deaths within 28 days of +ve COVID test by date of death across the UK to 16 March 2022

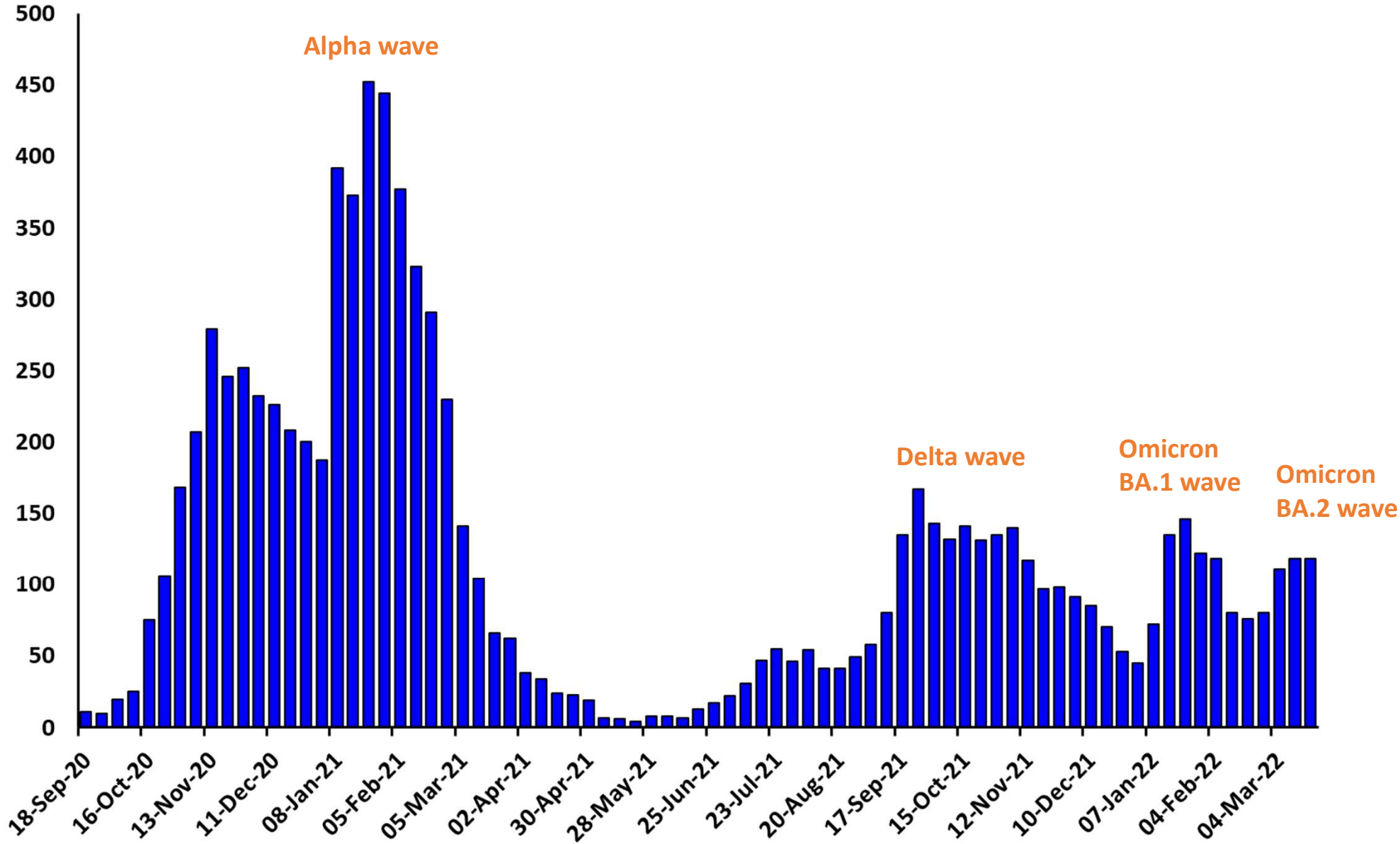


Data from <https://coronavirus.data.gov.uk/>

Number of deaths with Covid on the **death certificate** by week registered in UK to 11 March 2022



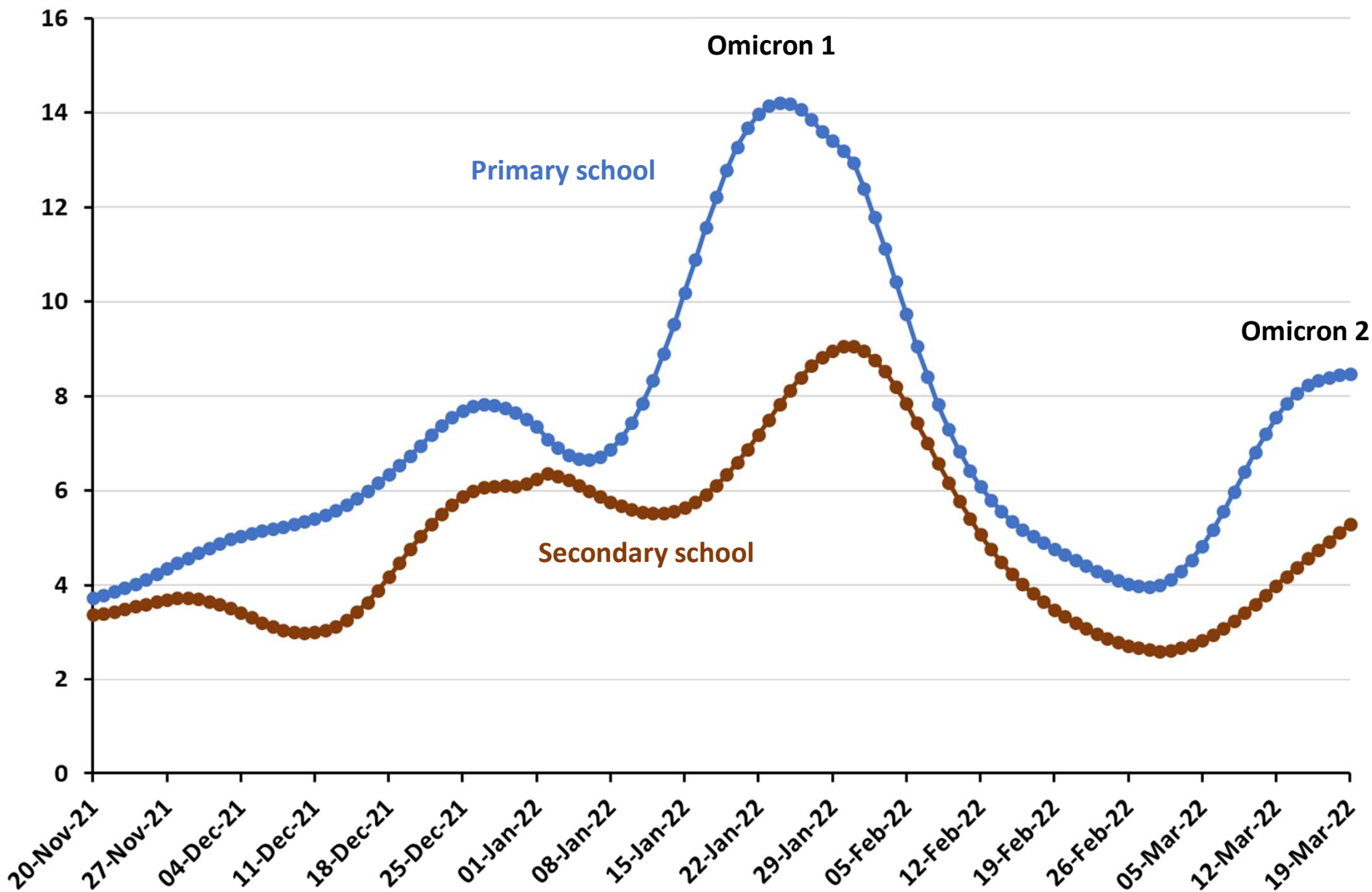
Number of deaths with Covid on the death certificate by week registered in Scotland to 18 March 2022



Data from <https://www.nrscotland.gov.uk/statistics-and-data/statistics/statistics-by-theme/vital-events/general-publications/weekly-and-monthly-data-on-births-and-deaths/deaths-involving-coronavirus-covid-19-in-scotland>

Schools

ONS modelled primary and secondary school children prevalence over last three months

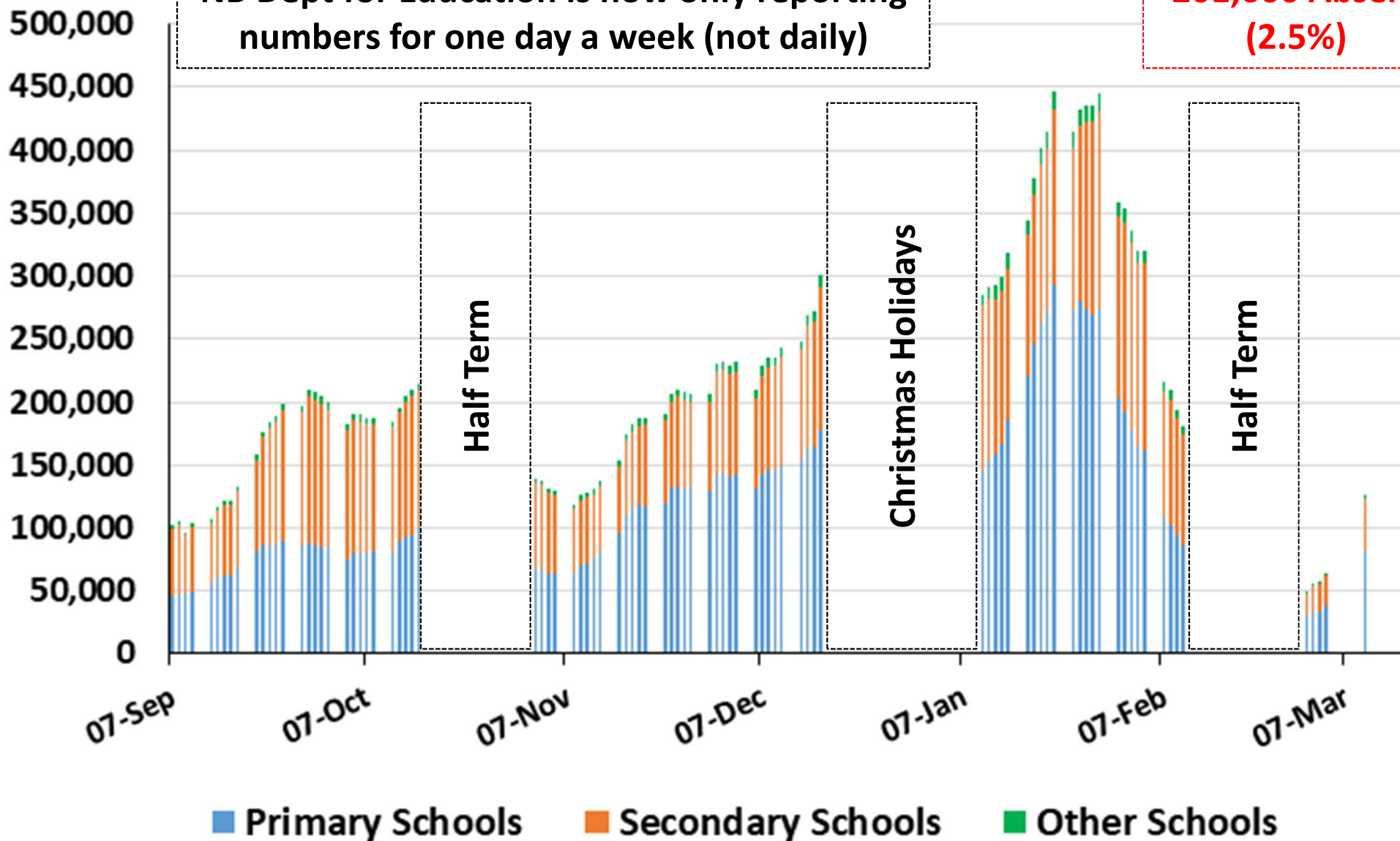


Number of Pupils in All State Schools absent due to Covid-19 for England by School from Sep 7, 2021 to Mar 17, 2022

(Source: Attendance in education and early years settings during the coronavirus (COVID-19) outbreak)

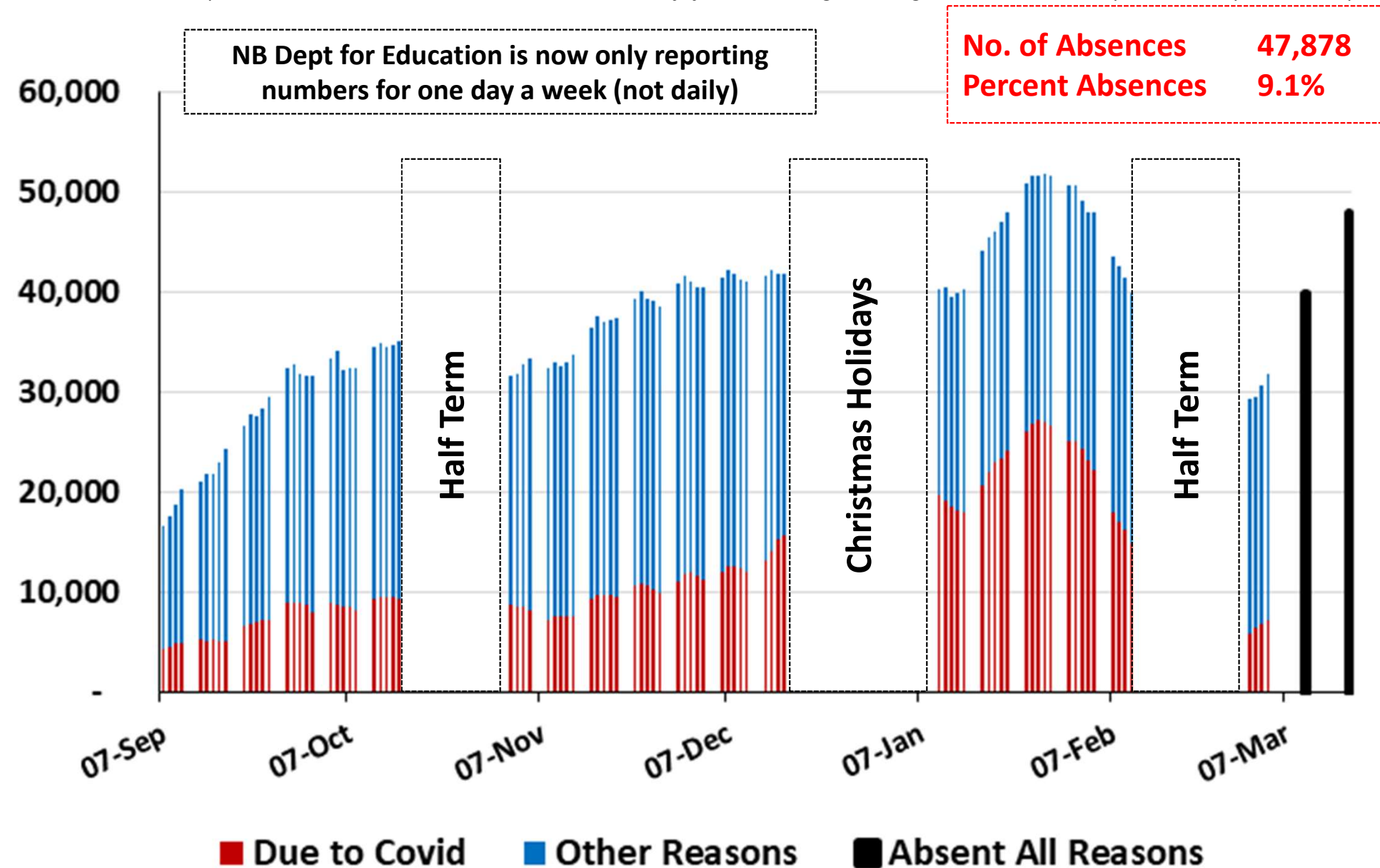
NB Dept for Education is now only reporting numbers for one day a week (not daily)

201,600 Absent (2.5%)



Number of Teachers in All State Schools absent for England from Sep 7, 2021 to Mar 17, 2022

(Source: Attendance in education and early years settings during the coronavirus (COVID-19) outbreak)

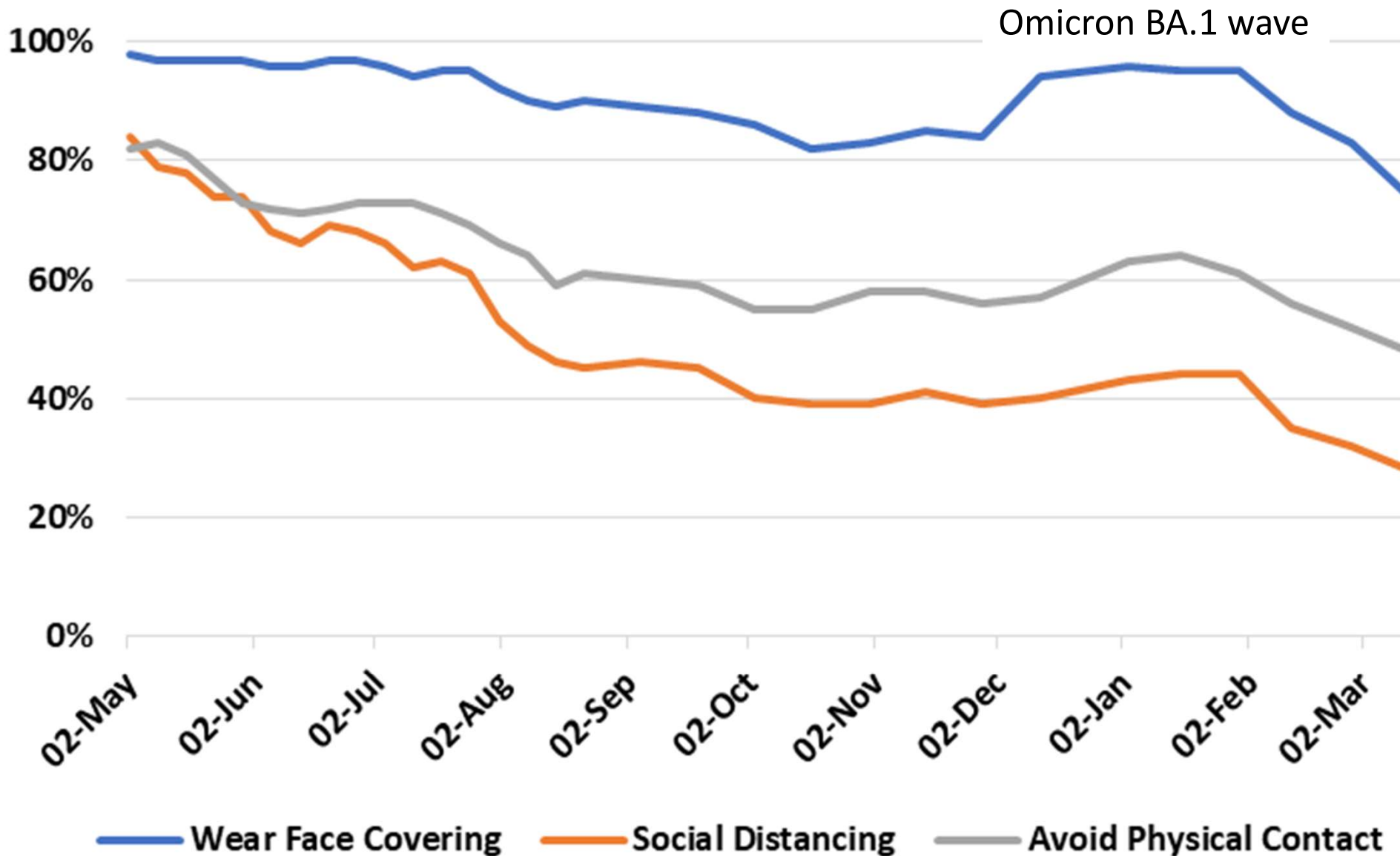


Teachers Absent

Behaviours

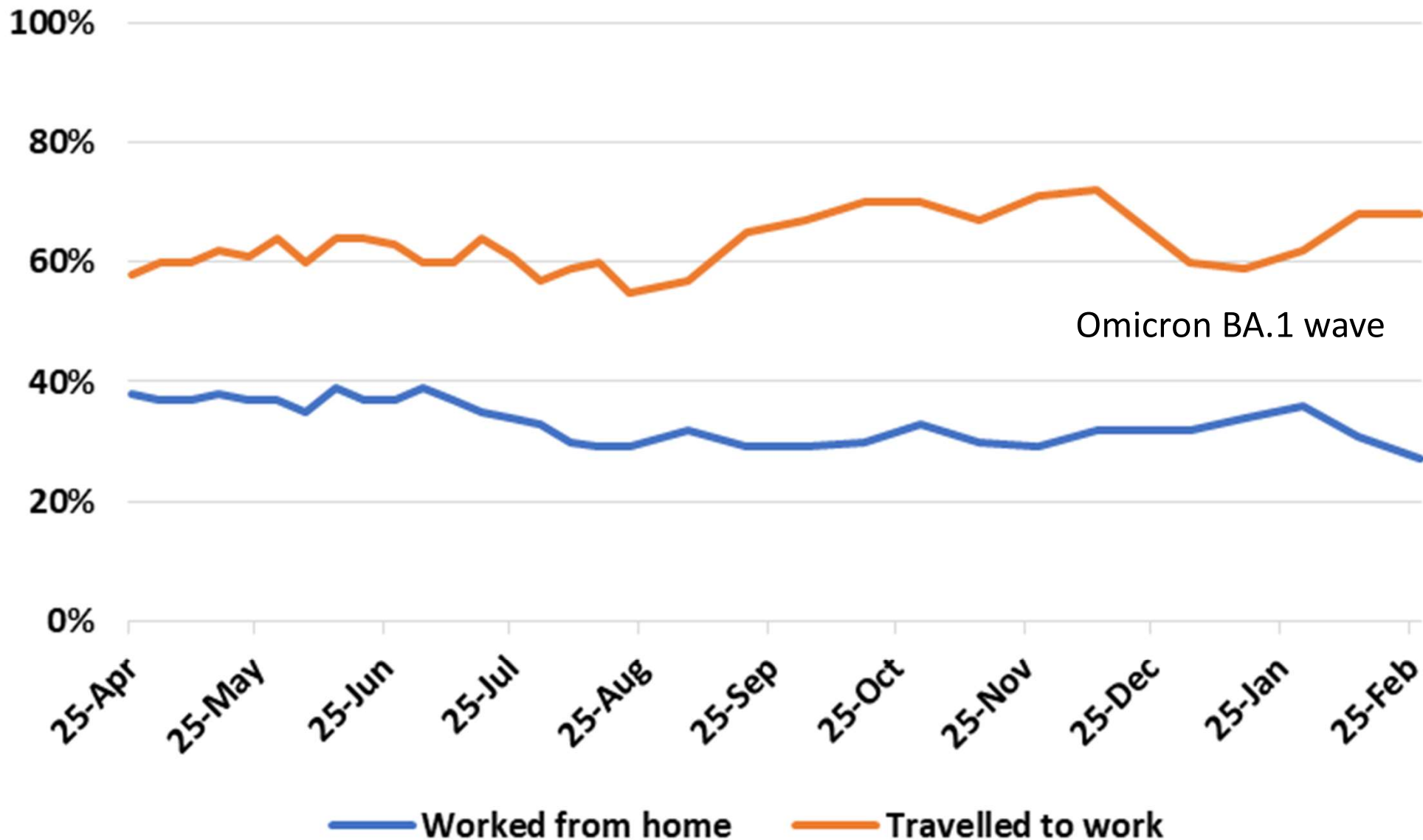
Percent of People Wearing Face Covering, Social Distancing and Avoiding Physical Contact in Great Britain: 2 May 2021 – 13 Mar 2022

(Source: Coronavirus and the social impacts on Great Britain Survey – 18 March 2022)



Percent of People Working from Home and Travelling to Work in Great Britain: 2 May 2021 – 13 Mar 2022

(Source: Coronavirus and the social impacts on Great Britain Survey – 18 March 2022)



SUMMARY

- ONS shows that the number of people with Covid is rising in all nations except Northern Ireland
- Number of people in hospital is increasing everywhere except Northern Ireland. Deaths are flat and likely to increase in next few weeks in England and Wales (and already are in Scotland).
- Boosters are waning, especially in older populations. School children are entering another big wave with big increases in children and staff off school.
- Despite back at peak numbers, people are reporting fewer protective behaviours such as mask wearing and working from home.