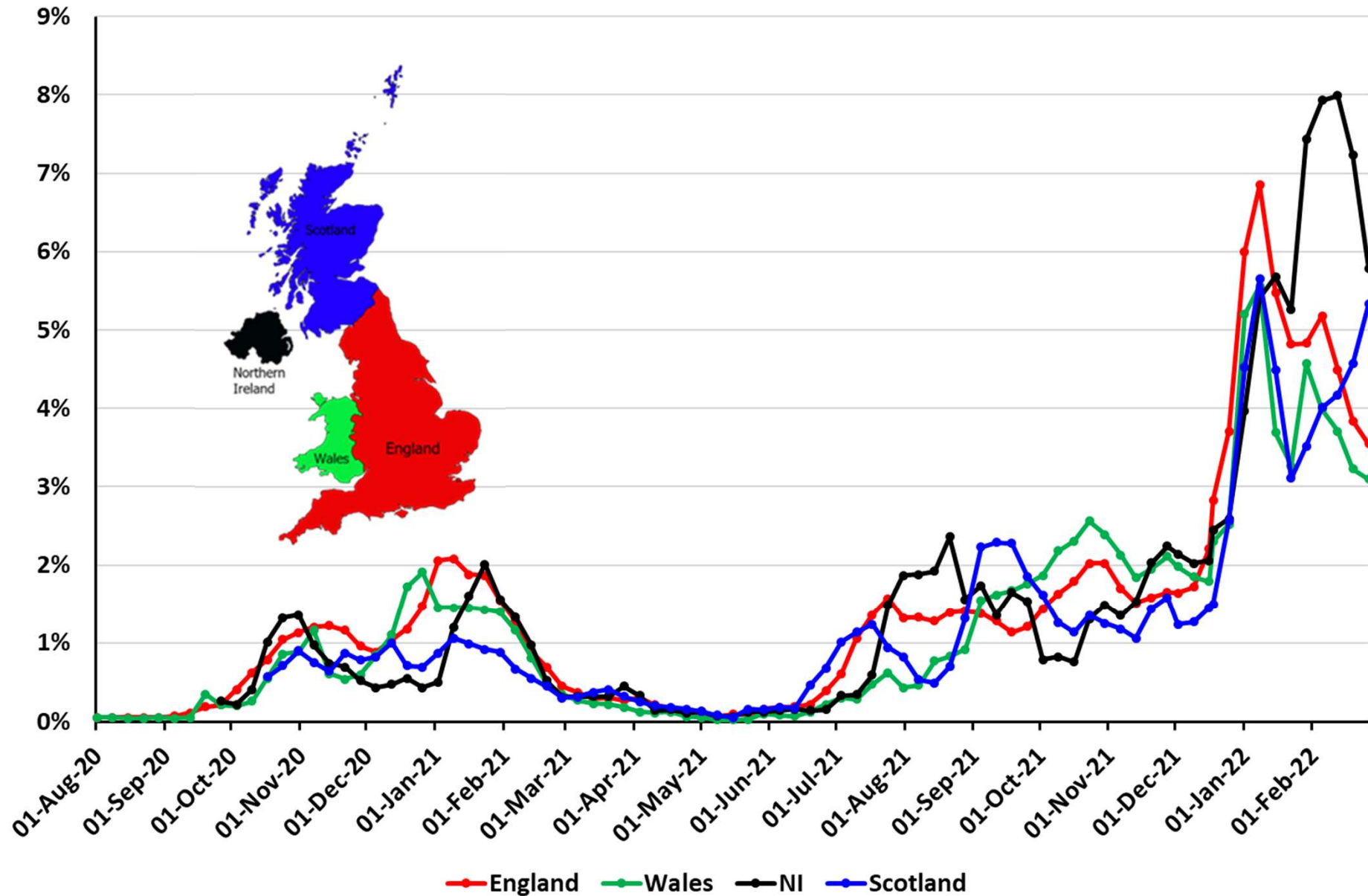


1. Prevalence of Covid
2. Variants
3. Hospitalisations
4. Long Covid
5. Inequality

With many thanks to Bob Hawkins for his help in collating the data

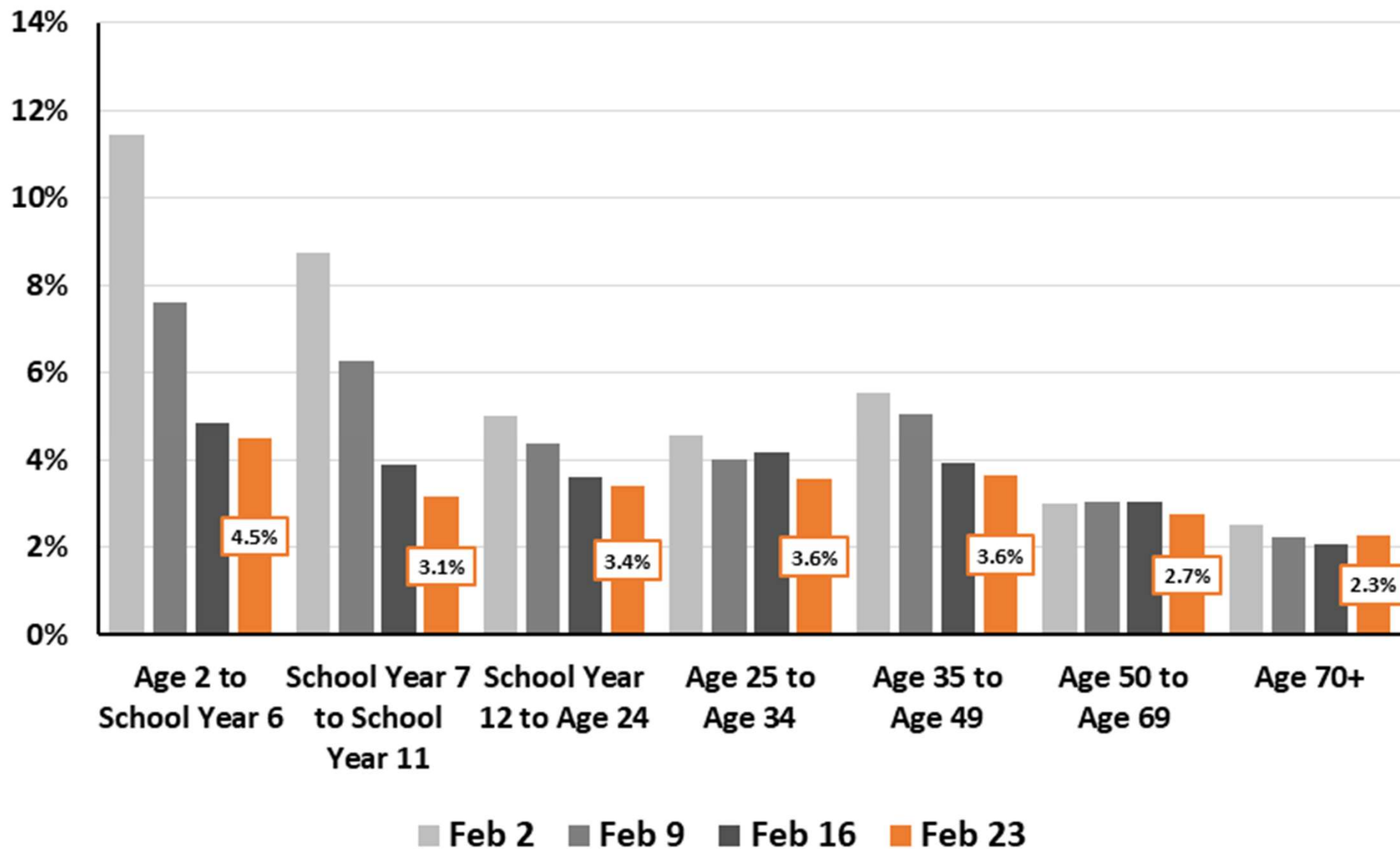
Prevalence of Covid

Percent of population testing positive each week by nation:
1 Aug 2020 to 26 Feb 2022
ONS Infection Survey (random testing)



Percent Testing Positive by Age for England: 23 Feb vs Prior Weeks

(Source: Coronavirus (COVID-19) Infection Survey results, UK: 4 Mar2022)



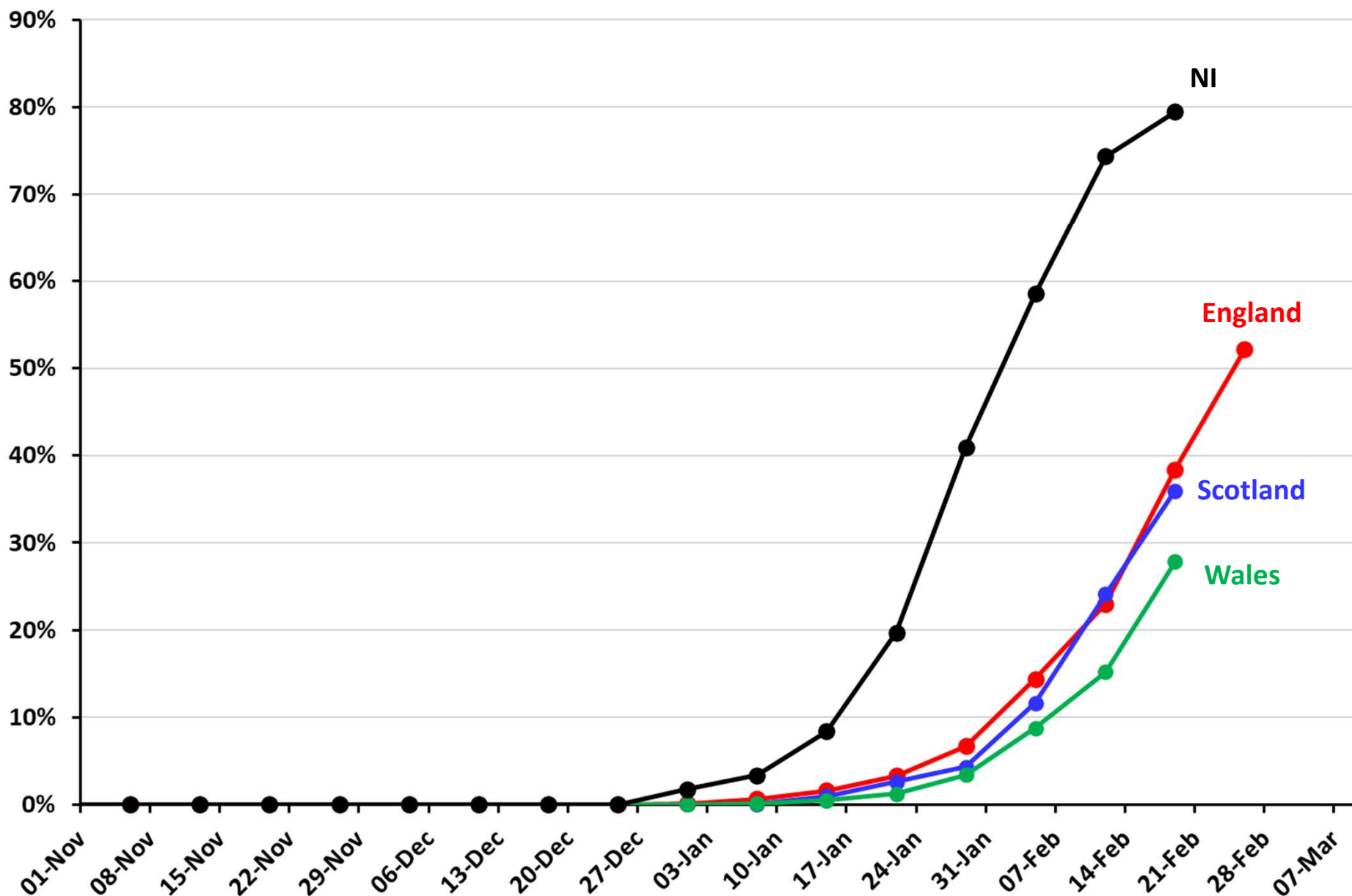
Data from

<https://www.ons.gov.uk/peoplepopulationandcommunity/healthandsocialcare/conditionsanddiseases/bulletins/coronaviruscovid19infectionsurvey/pil/previousReleases>.

Thanks to Bob Hawkins for the chart

BA.2 Omicron variant

Proportion of sequenced cases that are **BA.2** over time by home nation to week ending 26 Feb 2022.



Data from COG UK, <https://www.cogconsortium.uk/priority-areas/data-linkage-analysis/public-data-analysis/>

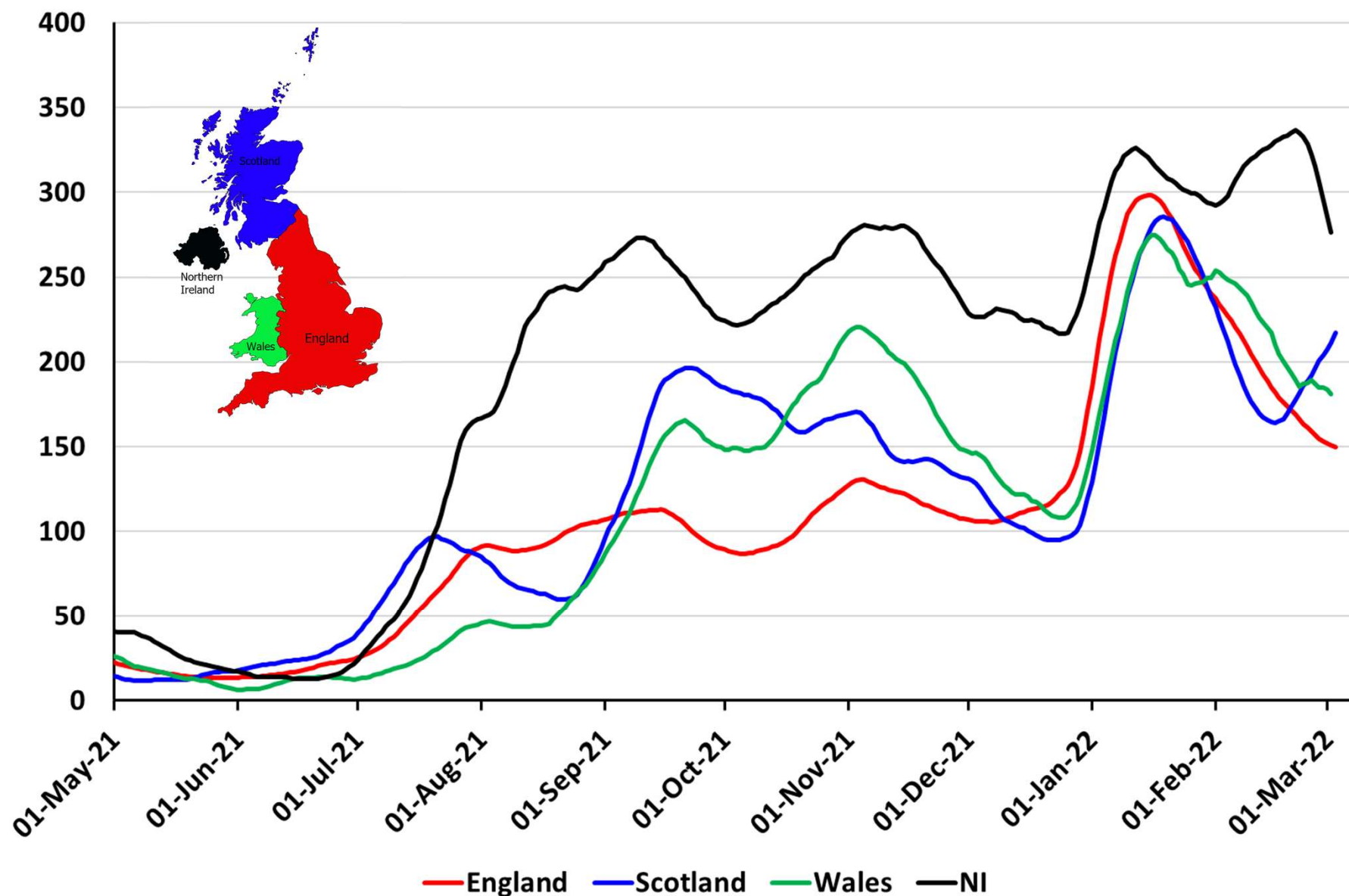
Latest estimates of vaccine efficacy against Omicron (no difference between BA.1 and BA.2)

	Dose 2			Dose 3		
	0 to 3 months	4 to 6 months	Over 6 months	0 to 3 months	4 to 6 months	Over 6 months
Infection	Insufficient data	Insufficient data	Insufficient data	Insufficient data	Insufficient data	Insufficient data
Symptomatic disease	25 to 70%	5 to 30%	0 to 10%	50 to 75%	40 to 50%	Insufficient data
Hospitalisation	65 to 85%	55 to 65%	30 to 35%	80 to 95%	75 to 85%	Insufficient data
Mortality	Insufficient data	Insufficient data	40 to 70%	85 to 99%	Insufficient data	Insufficient data

From https://assets.publishing.service.gov.uk/government/uploads/system/uploads/attachment_data/file/1058464/Vaccine-surveillance-report-week-9.pdf

Hospitals & Deaths

Number of people in hospital with Covid per million people – UK nations 7 day rolling average to 1 Apr 2020 – 3 Mar 2022



Number of people with Covid-19 in mechanically ventilated beds in Scotland to 3 March 2022

Healthcare in Scotland ▼ 9 patients (7-day average)

Healthcare data are available for **nations**, **NHS regions** and **NHS trusts**.



Patients in mechanical ventilation beds

Daily count of COVID-19 patients in mechanical ventilation beds, and 7-day rolling average. Data are not updated every day.

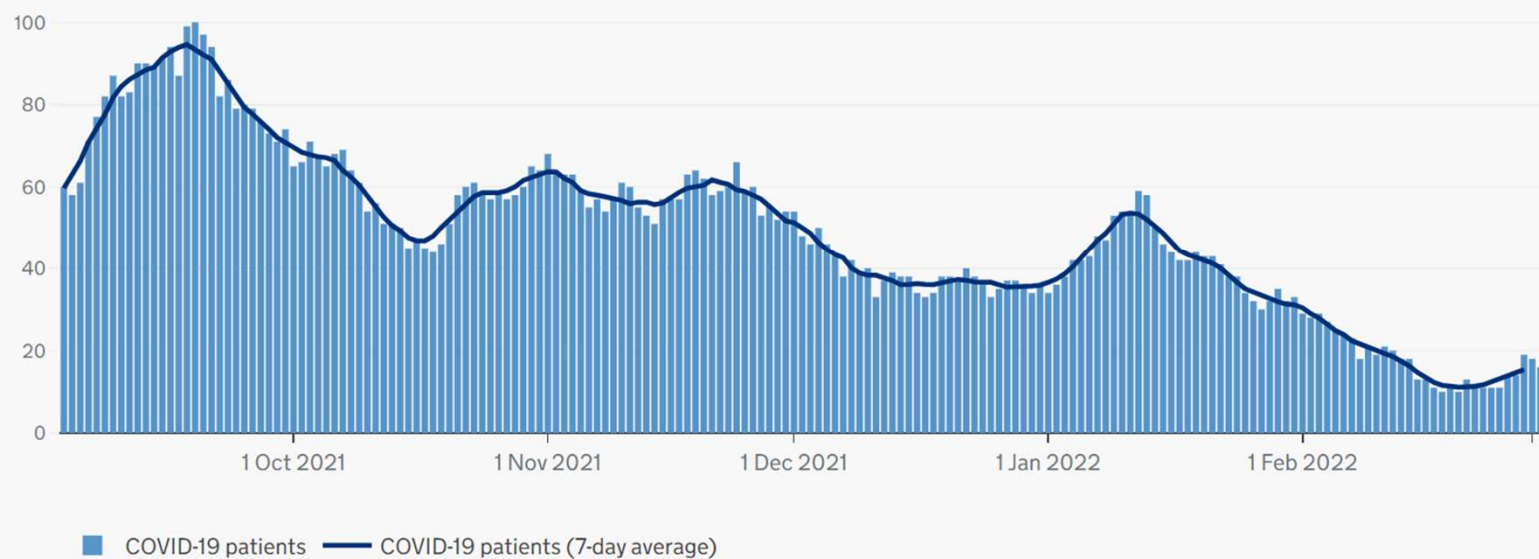
Daily

Data

About

all 1y **6m** 3m 1m

Linear Log

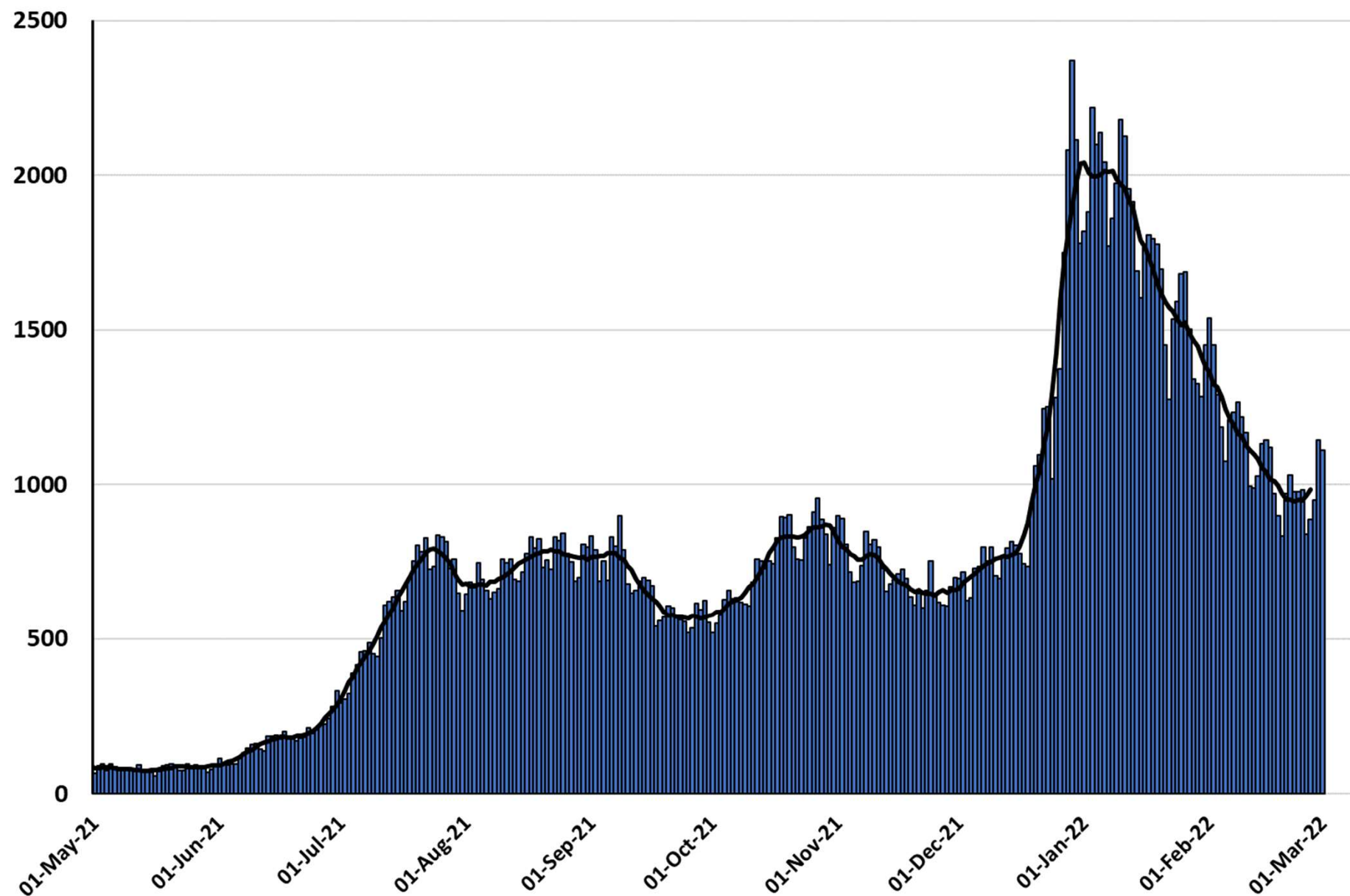


Download

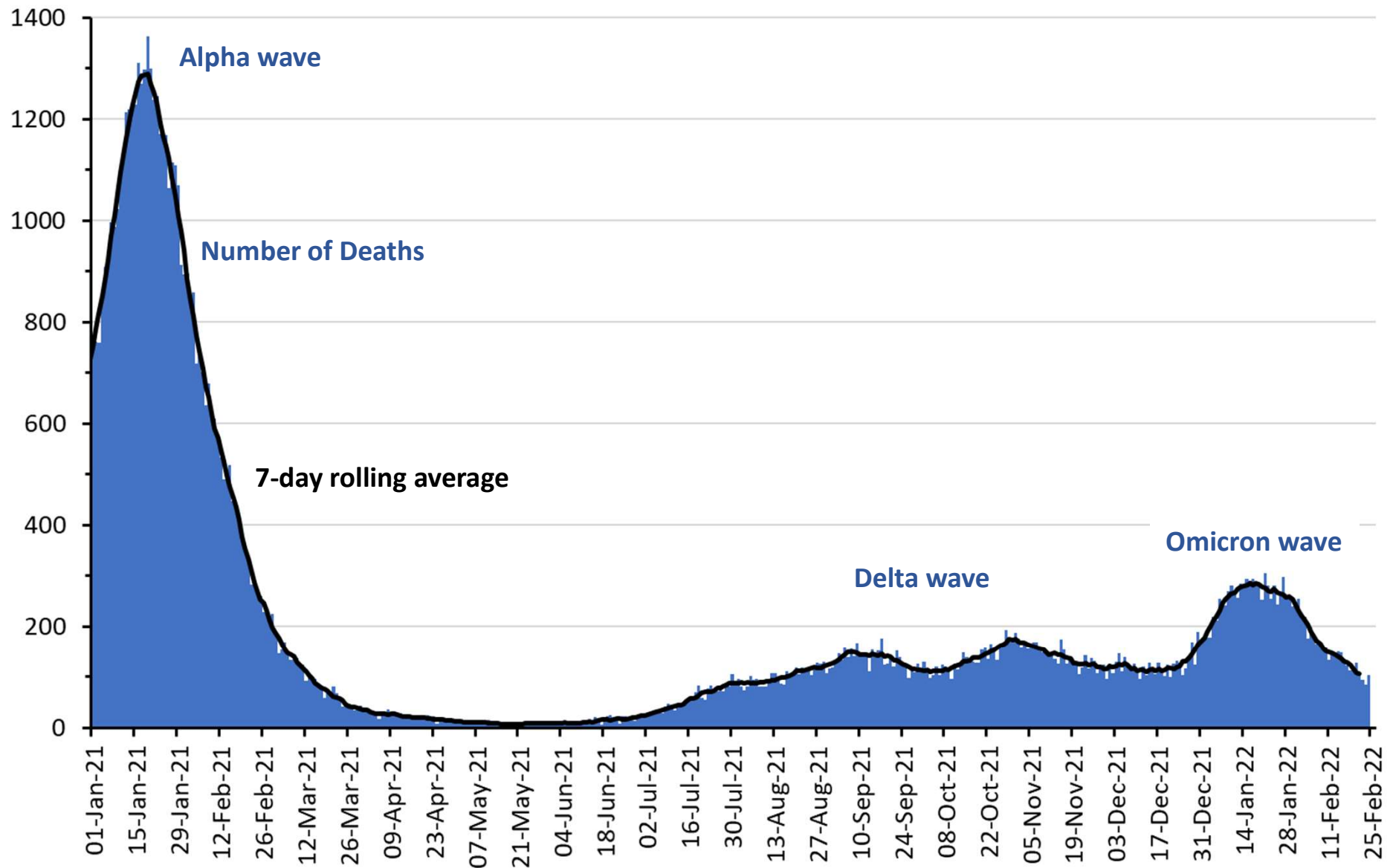
Share

From <https://coronavirus.data.gov.uk/details/healthcare?areaType=nation&areaName=Scotland>

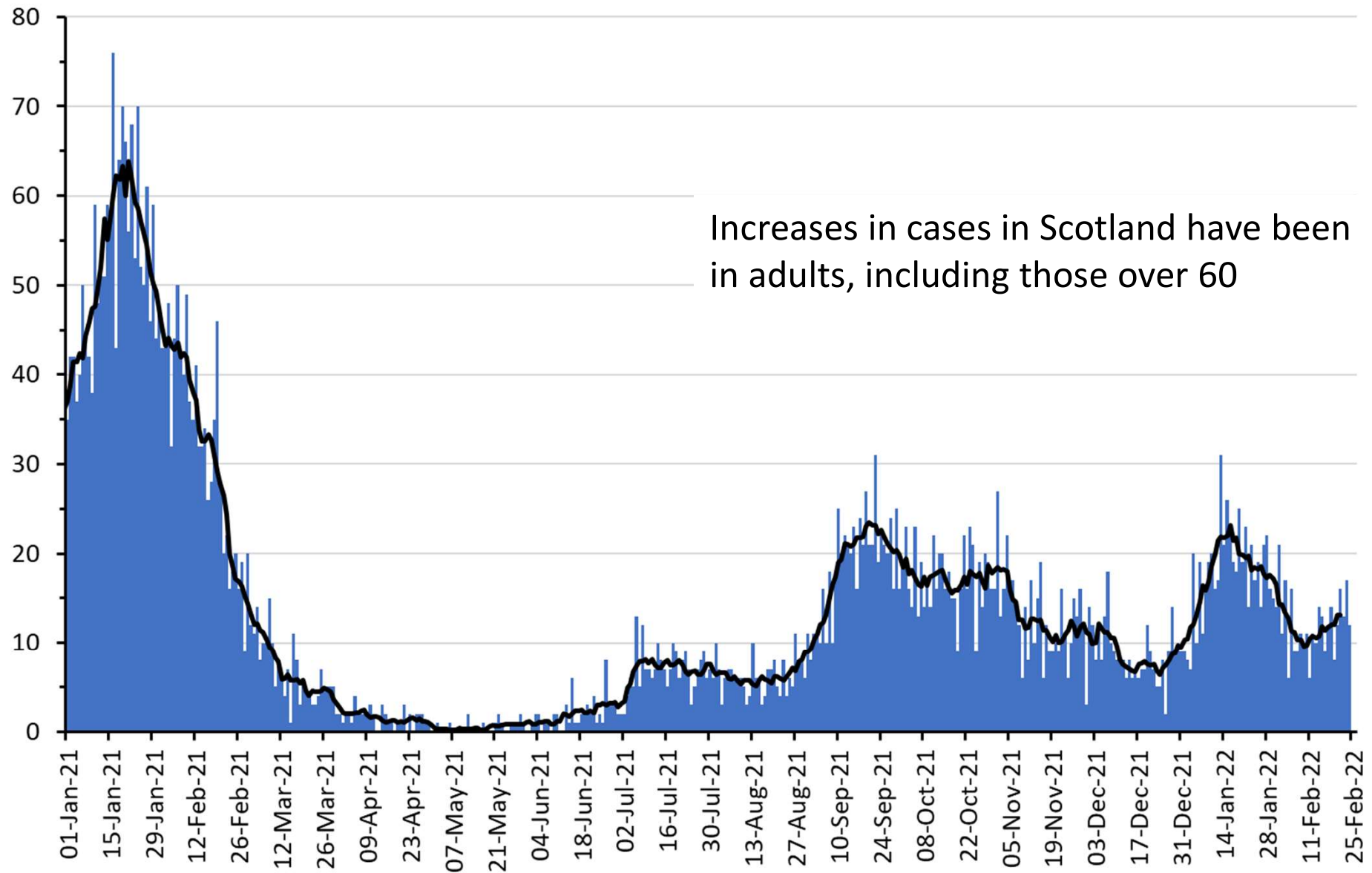
Number of daily hospital admissions with Covid in England to 1 Mar 2022



Number of deaths within 28 days of +ve COVID test by **date of death** across the UK to 24 February 2022



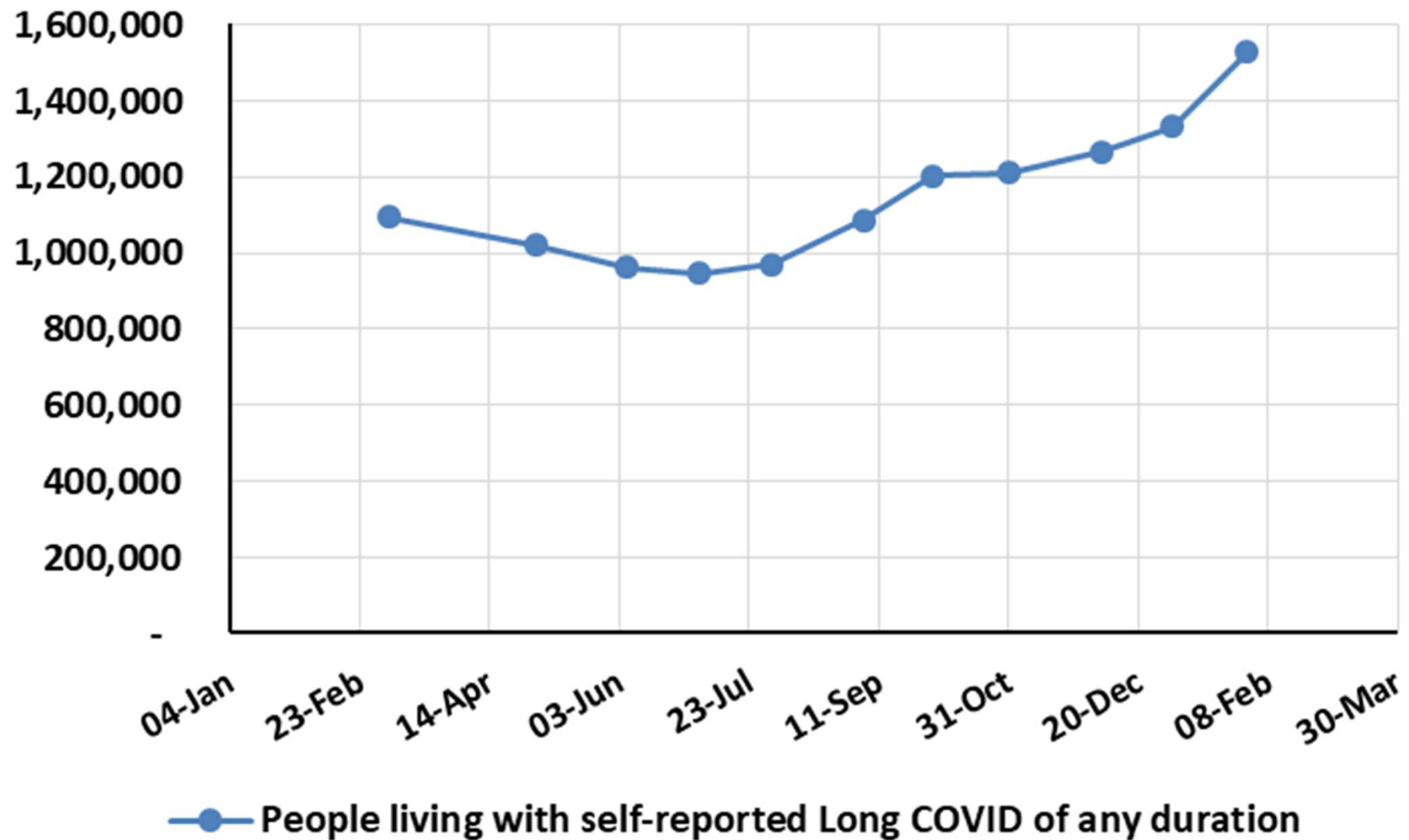
Number of deaths within 28 days of +ve COVID test by date of death in Scotland to 24 February 2022



Long Covid

Number of People Living with Self-Reported Long Covid (at least 4 weeks) in the UK, Mar 6, 2021 to Jan 31, 2022

(Source: ONS Prevalence of ongoing symptoms following coronavirus (COVID-19) infection in the UK Reports)



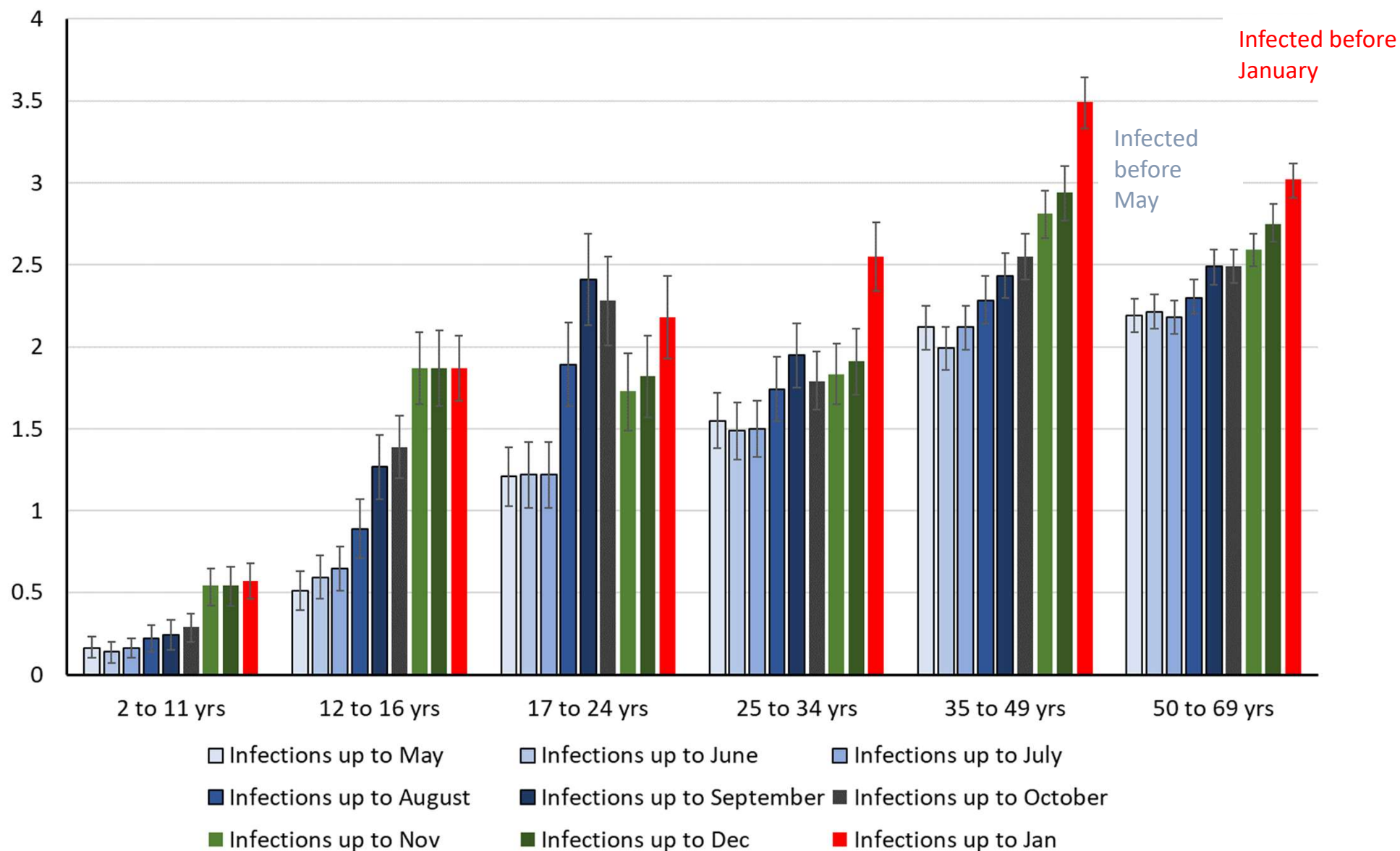
All

<https://www.ons.gov.uk/peoplepopulationandcommunity/healthandsocialcare/conditionsanddiseases/bulletins/prevalenceofongoingsymptomsfollowingcoronaviruscovid19infectionintheuk/6january2022>

Thanks to Bob Hawkins from the chart

Percentage of population living with “Long Covid” (symptoms lasting at least 4 weeks) by age over time (ONS survey)

Percent of age group



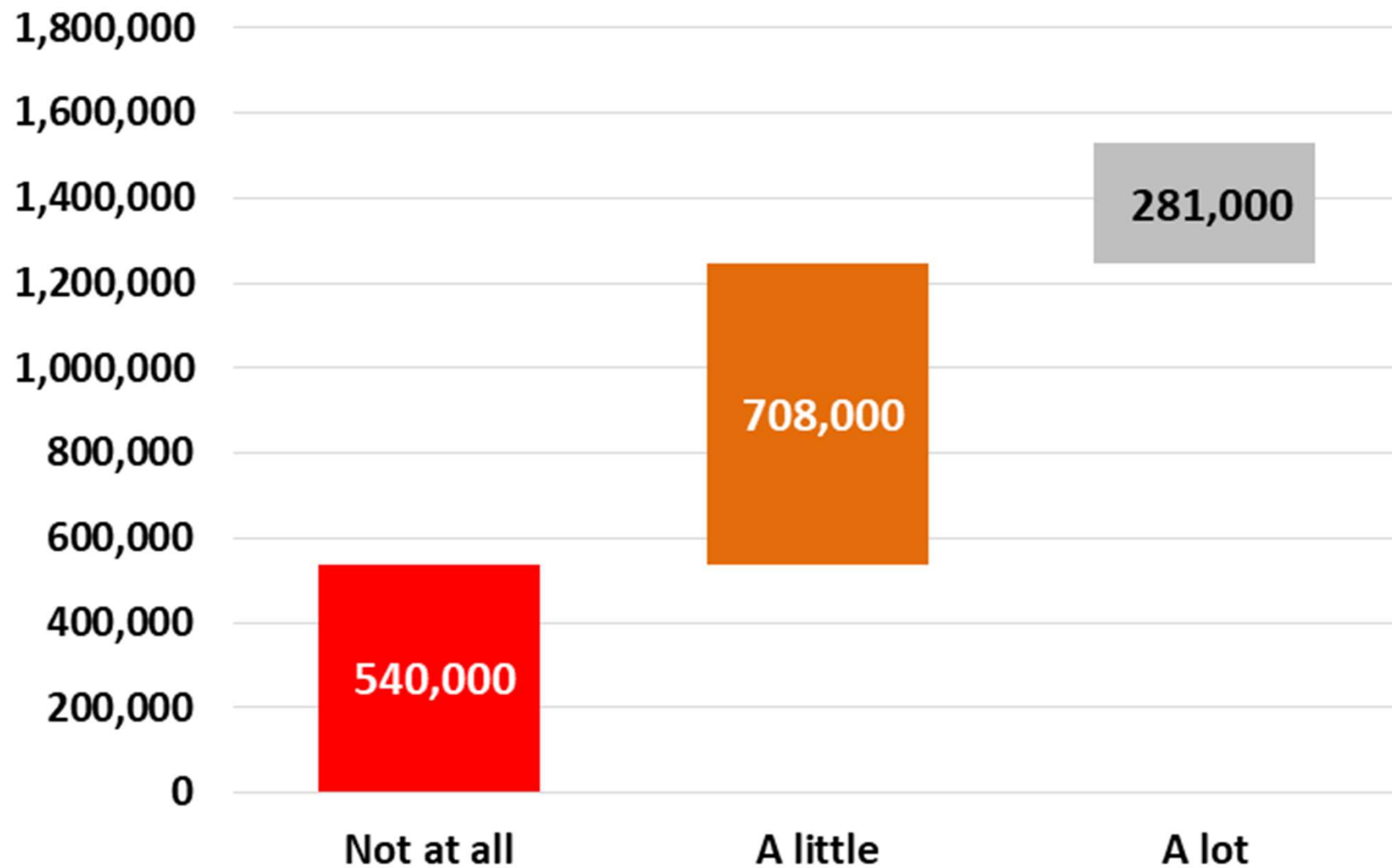
Data from

<https://www.ons.gov.uk/peoplepopulationandcommunity/healthandsocialcare/conditionsanddiseases/datasets/alldatarelatingtoprevalenceofongoingsymptomsfollowingcoronaviruscovid19infectionintheuk>

Impact on People Living with Self-Reported Long Covid in the UK

Jan 31, 2022

(Source: ONS Prevalence of ongoing symptoms following coronavirus (COVID-19) infection in the UK Reports)



All

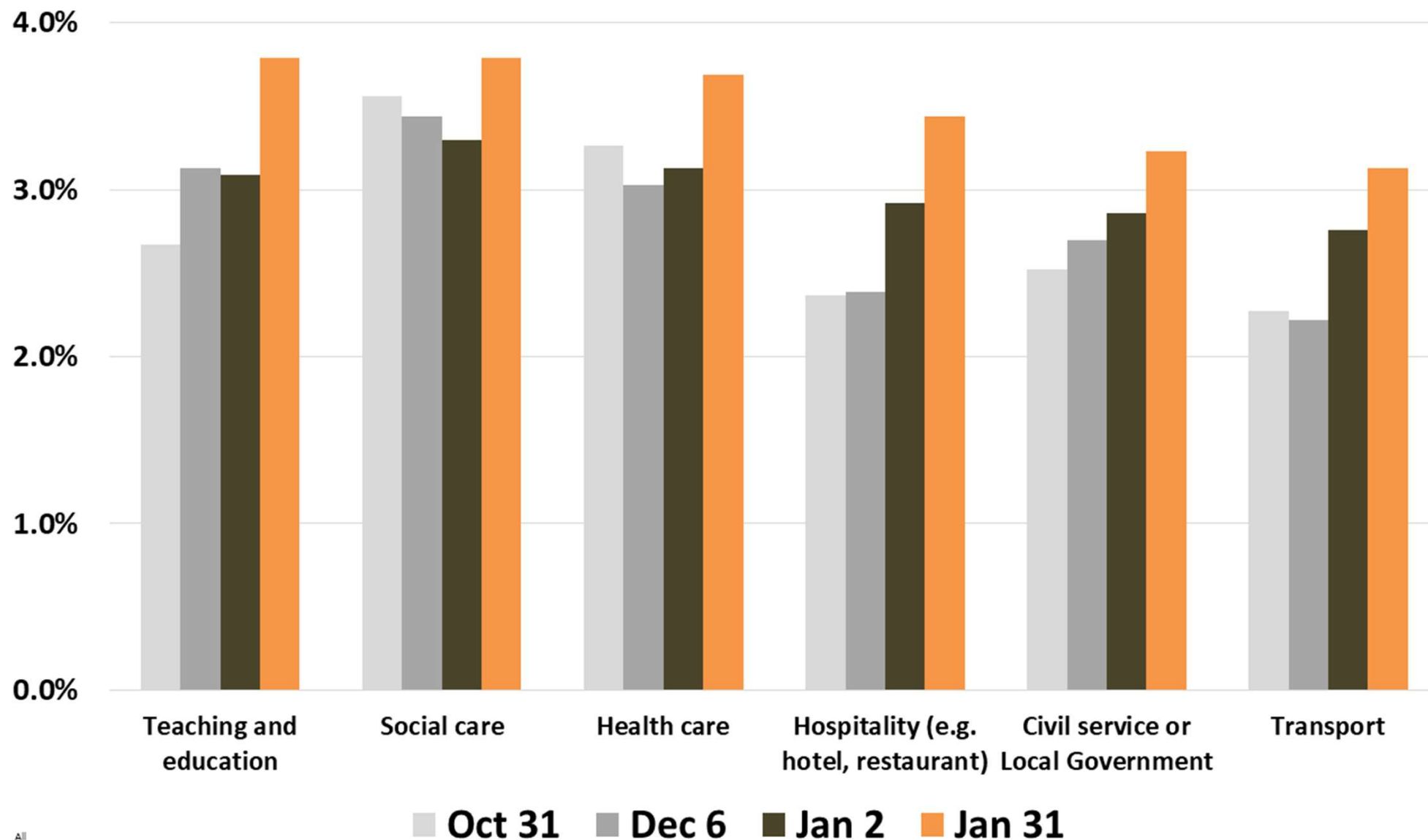
Extent to which long COVID reduces ability to undertake day-to-day activities

<https://www.ons.gov.uk/peoplepopulationandcommunity/healthandsocialcare/conditionsanddiseases/bulletins/prevalenceofongoingsymptomsfollowingcoronaviruscovid19infectionintheuk/6january2022>

Thanks to Bob Hawkins from the chart

Percent of People in 'Top 6' Job Sectors Living with Self-Reported Long Covid in the UK: Oct 31, 2021 to Jan 31 2022

(Source: ONS Prevalence of ongoing symptoms following coronavirus (COVID-19) infection in the UK Reports)



All

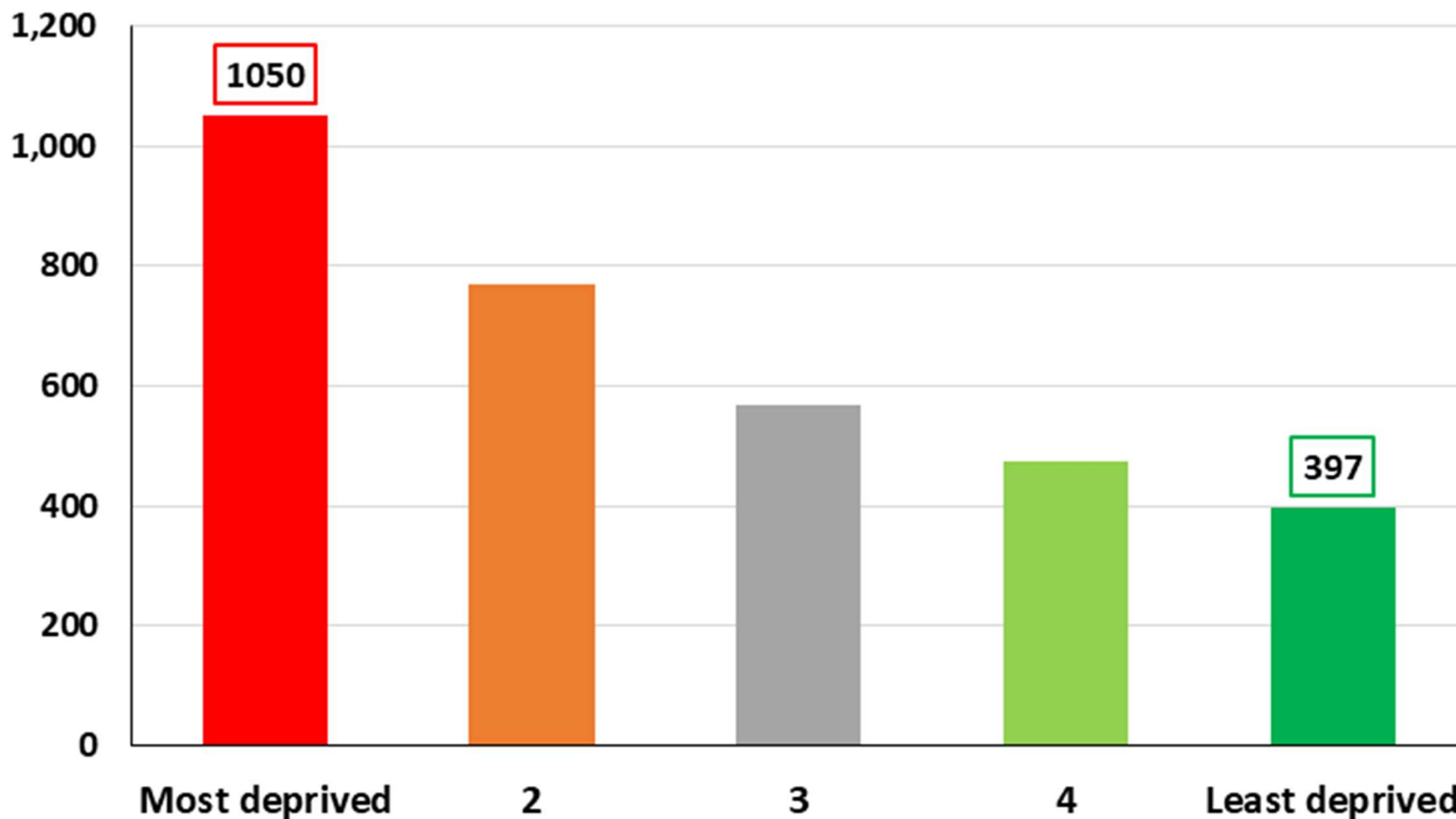
<https://www.ons.gov.uk/peoplepopulationandcommunity/healthandsocialcare/conditionsanddiseases/bulletins/prevalenceofongoingsymptomsfollowingcoronaviruscovid19infectionintheuk/6january2022>

Thanks to Bob Hawkins from the chart

Inequalities

Hospital Admission Rate per 100,000 by Deprivation in England for the Period Mar 2020 to Nov 2021

(Source: COVID-19 Health Inequalities Monitoring for England (CHIME) tool)



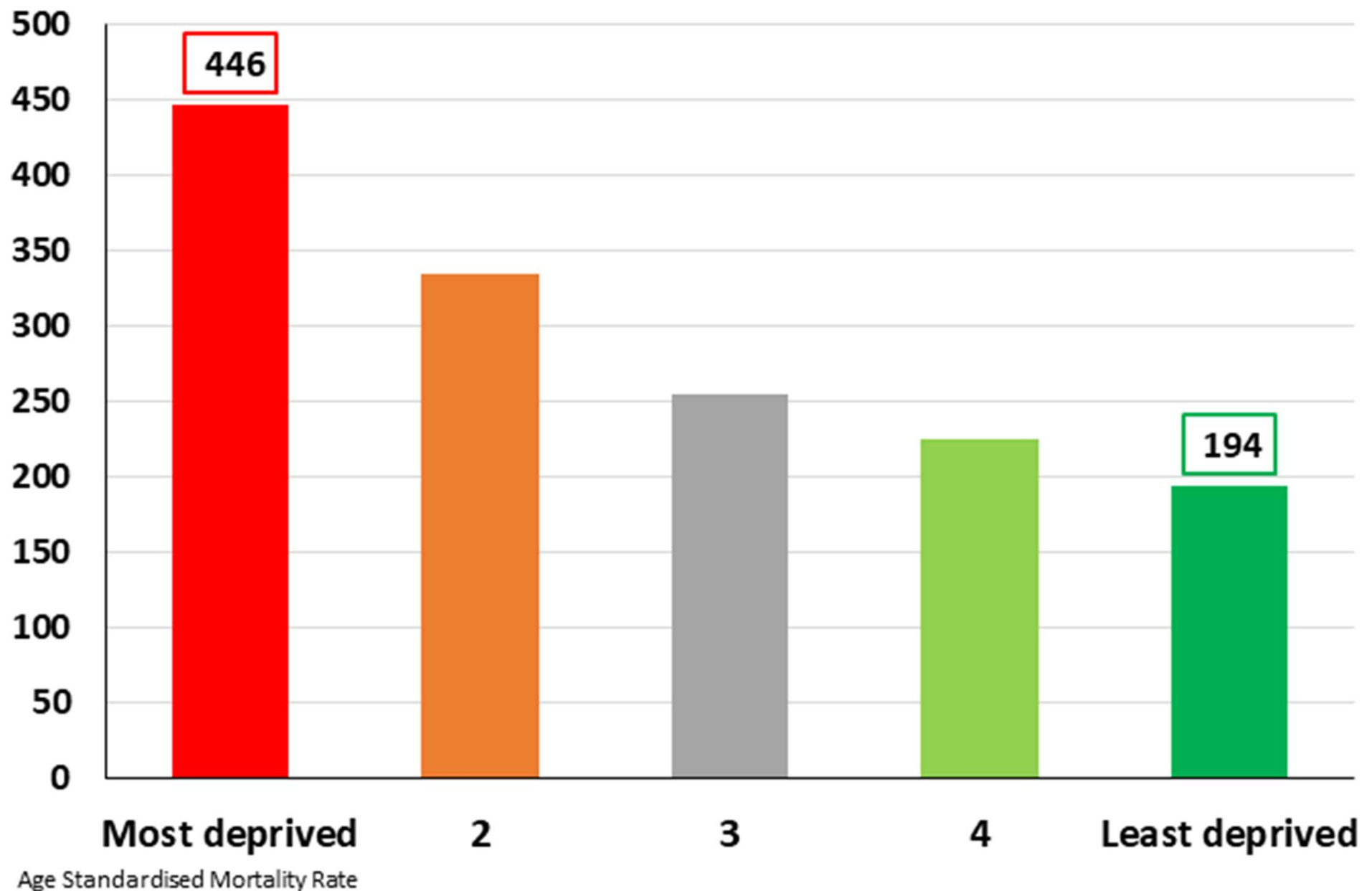
Age Standardised Adm Rate

<https://analytics.phe.gov.uk/apps/chime/>

Thanks to Bob Hawkins from the chart

Mortality Rate per 100,000 by Deprivation in England for the Period Mar 2020 to Dec 2021

(Source: COVID-19 Health Inequalities Monitoring for England (CHIME) tool)

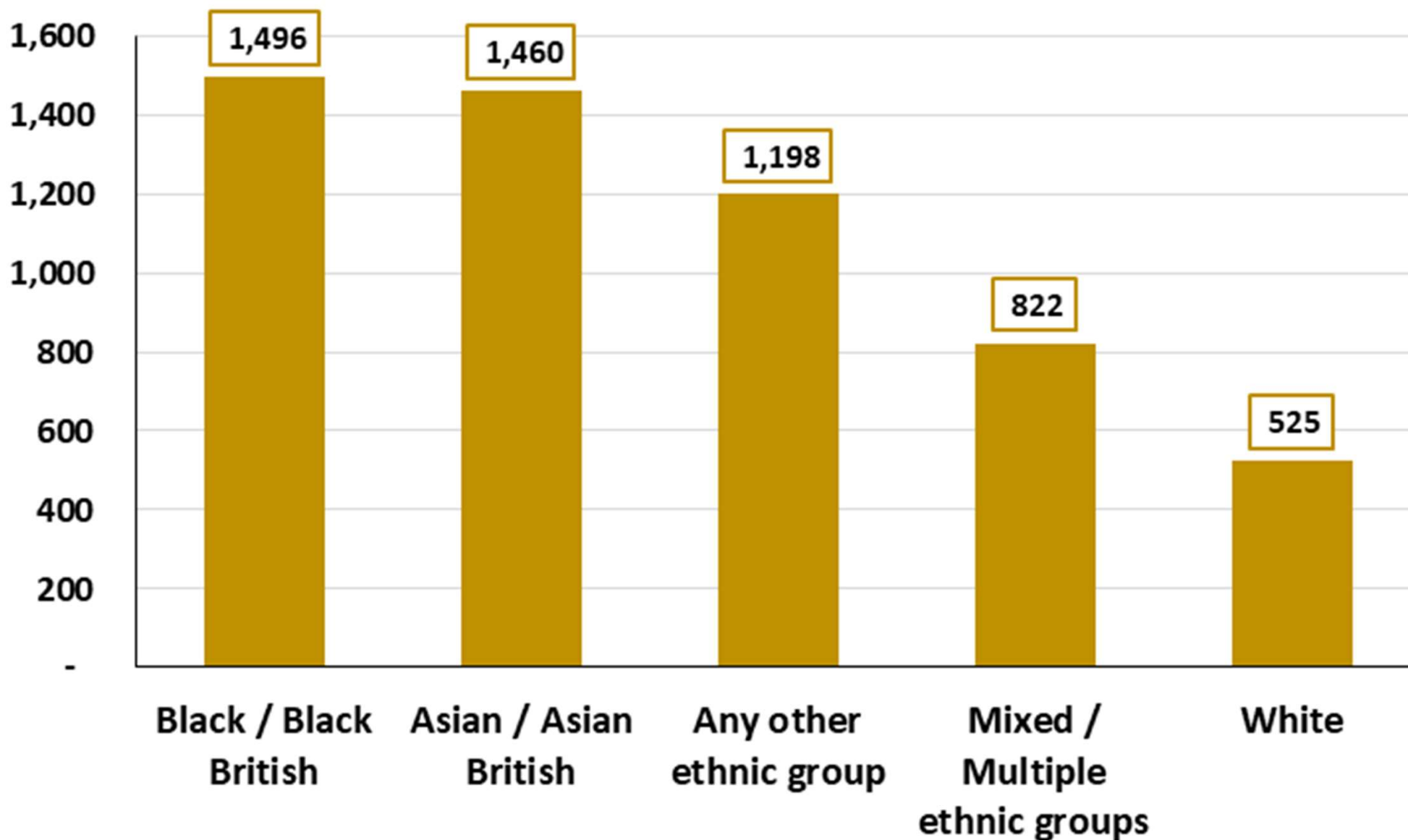


<https://analytics.phe.gov.uk/apps/chime/>

Thanks to Bob Hawkins from the chart

Hospital Admission Rate per 100,000 by Ethnicity in England for the Period Mar 2020 to Nov 2021

(Source: COVID-19 Health Inequalities Monitoring for England (CHIME) tool)



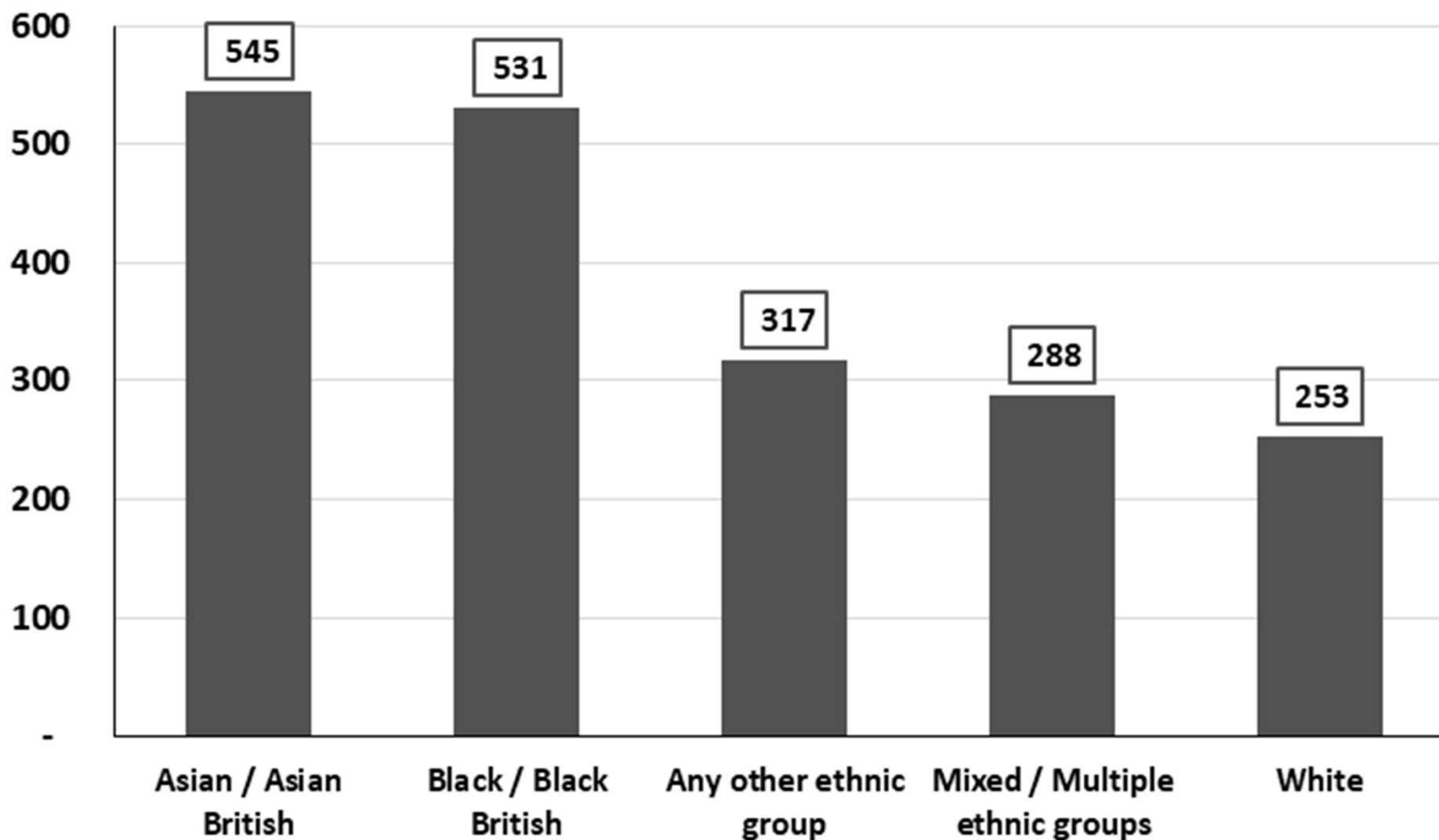
Age Standardised Adm Rate

<https://analytics.phe.gov.uk/apps/chime/>

Thanks to Bob Hawkins from the chart

Mortality Rate per 100,000 by Ethnicity in England for the Period Mar 2020 to Dec 2021

(Source: COVID-19 Health Inequalities Monitoring for England (CHIME) tool)



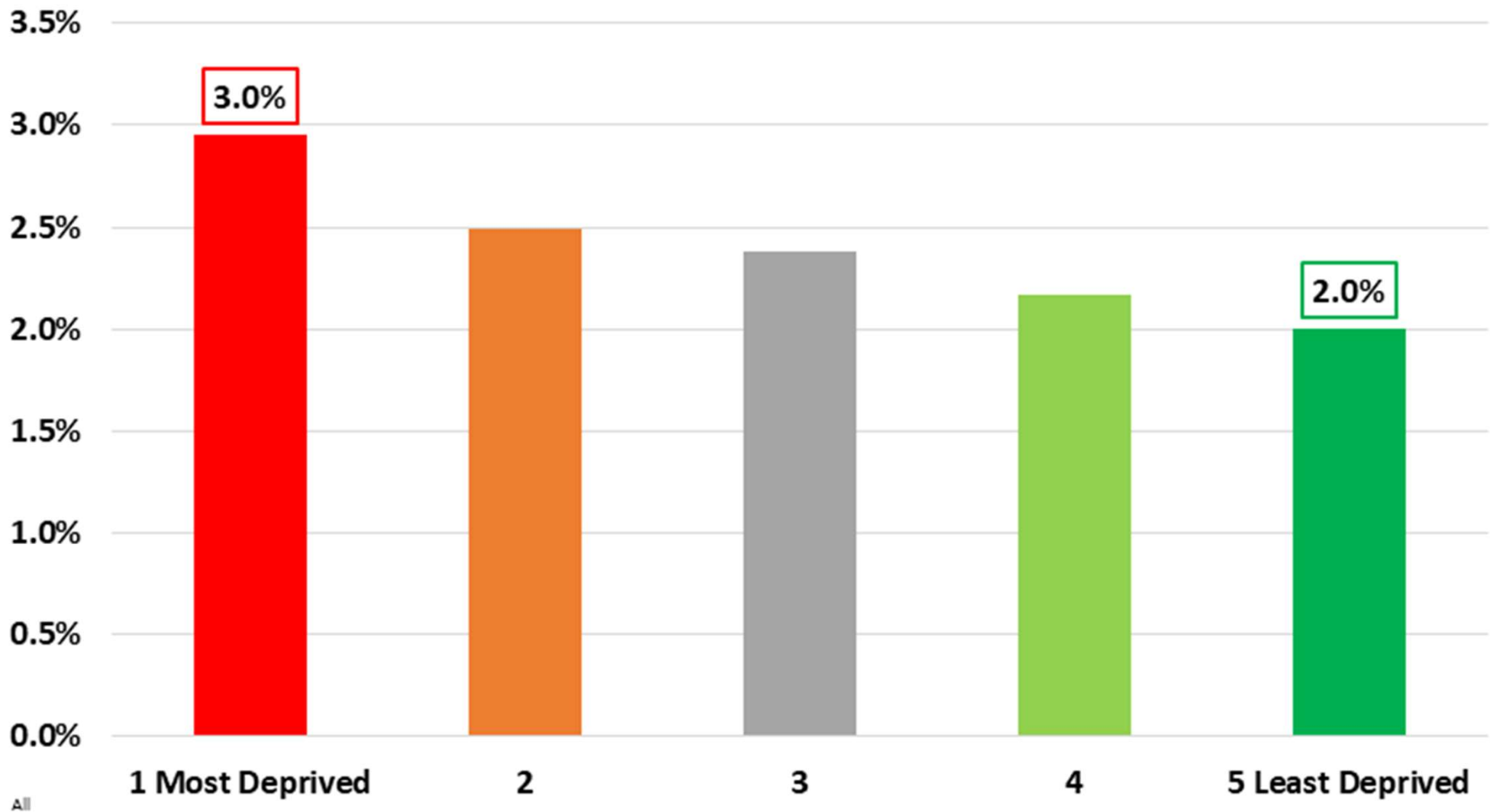
Age Standardised Mortality Rate

<https://analytics.phe.gov.uk/apps/chime/>

Thanks to Bob Hawkins from the chart

Percent of Deprivation Quintile Living with Self-Reported Long Covid in the UK: Jan 31, 2022

(Source: ONS Prevalence of ongoing symptoms following coronavirus (COVID-19) infection in the UK Reports)

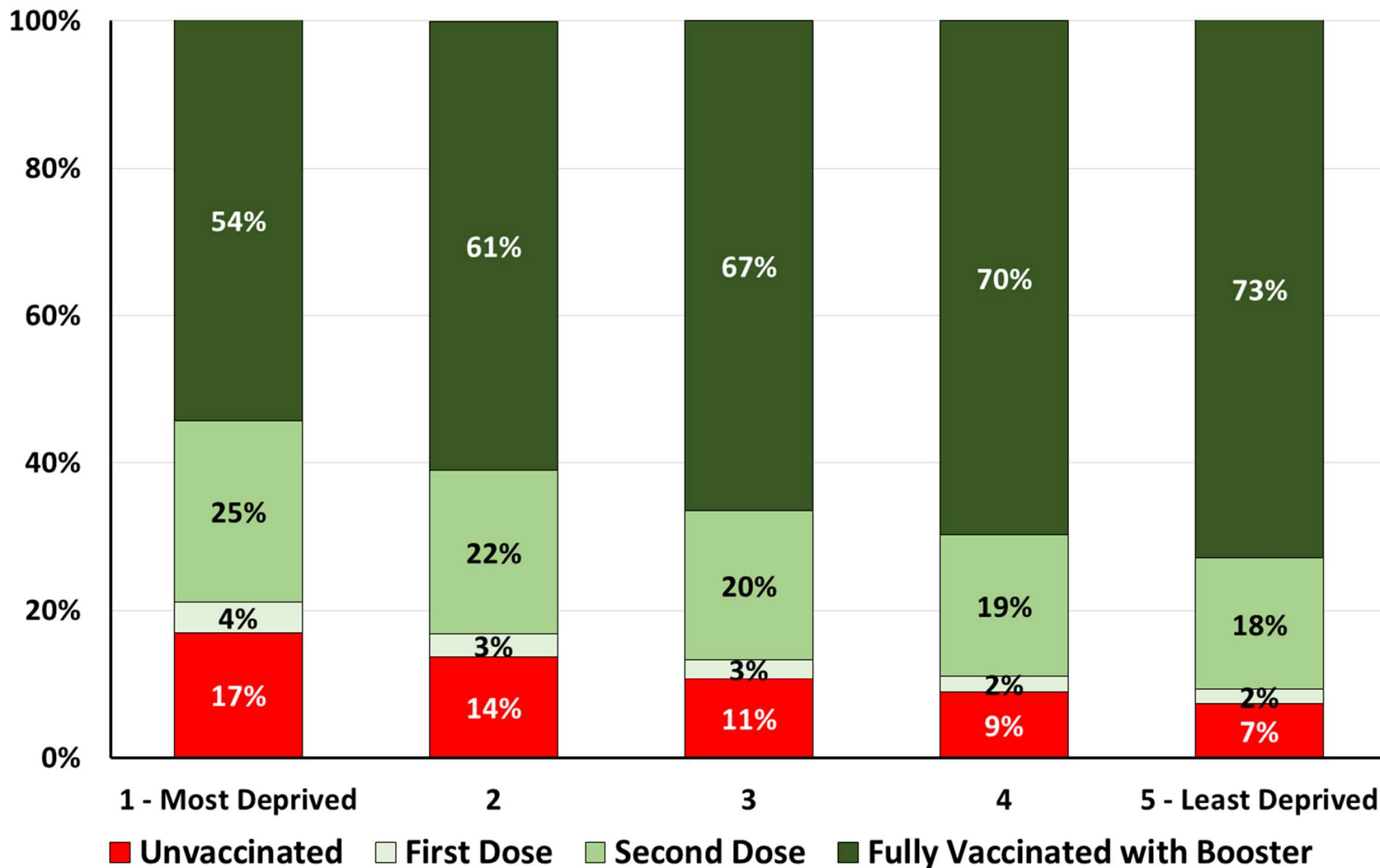


<https://www.ons.gov.uk/peoplepopulationandcommunity/healthandsocialcare/conditionsanddiseases/bulletins/prevalenceofongoingsymptomsfollowingcoronaviruscovid19infectionintheuk/6january2022>

Thanks to Bob Hawkins from the chart

Vaccine Coverage by Deprivation for Over 18's in England as at 31 Dec 2021

(Source: ONS report on Coronavirus and vaccination rates in people by socio-demographic characteristic & occupation in England)



SUMMARY

- ONS shows that the number of people with Covid is falling in England, Wales, and NI but rising in Scotland
- Number of people in hospital is continuing to fall in all nations except Scotland where they are rising. Admissions in England have also risen in the last few days.
- Deaths are flat or declining in all nations apart from Scotland.
- The Omicron subvariant (BA.2) continues to increase in all nations, is dominant in N Ireland, England and likely Scotland.
- Inequalities in hospitalisations, deaths and vaccination are stark.