

# Data Presentation

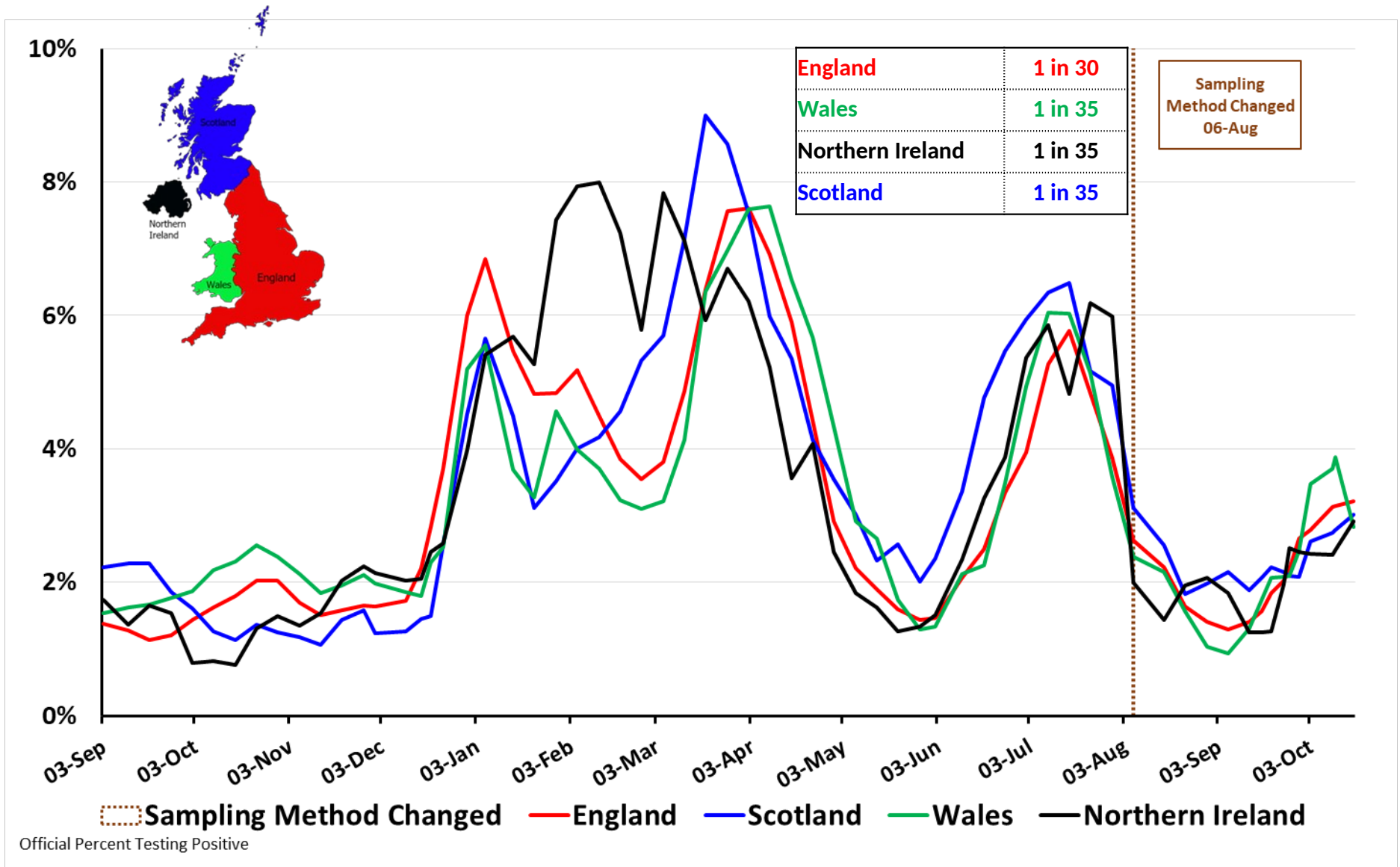
## 28 October 2022

- Infections in England levelling off (ONS survey to 17 October)
- Past the BA.5 peak
- Covid admissions and Covid patients in hospital falling
- Variants: Proportion of BQ.1 / BQ.1.1 increasing

# INFECTIONS

# Percent Testing Positive by Nation: 3 Sep 2021 to 17 Oct 2022

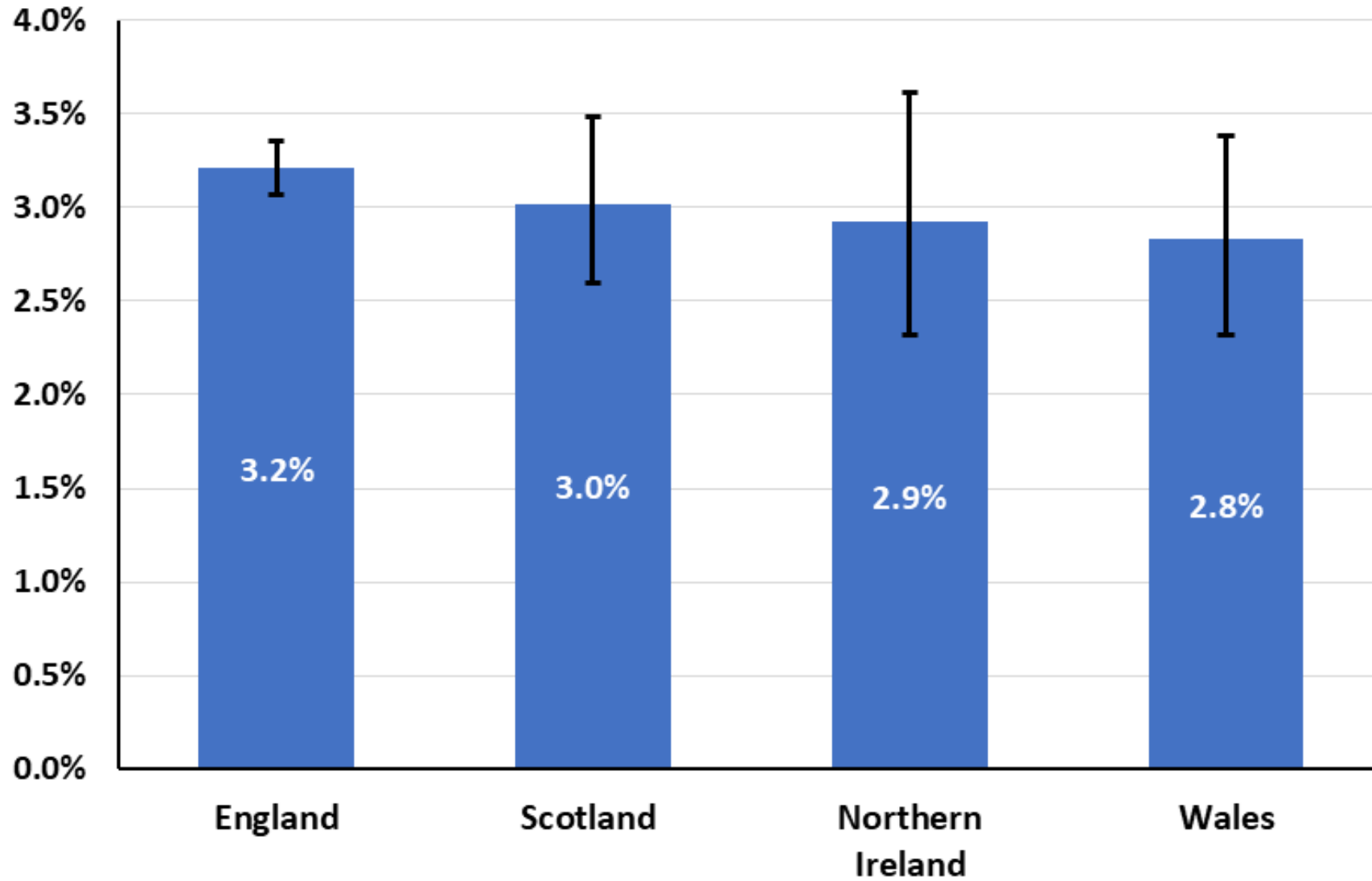
(Source: ONS Coronavirus (COVID-19) Infection Survey results)



Thanks to Bob Hawkins for the chart

# Percent Testing Positive by Home Nation: to 17 Oct 2022

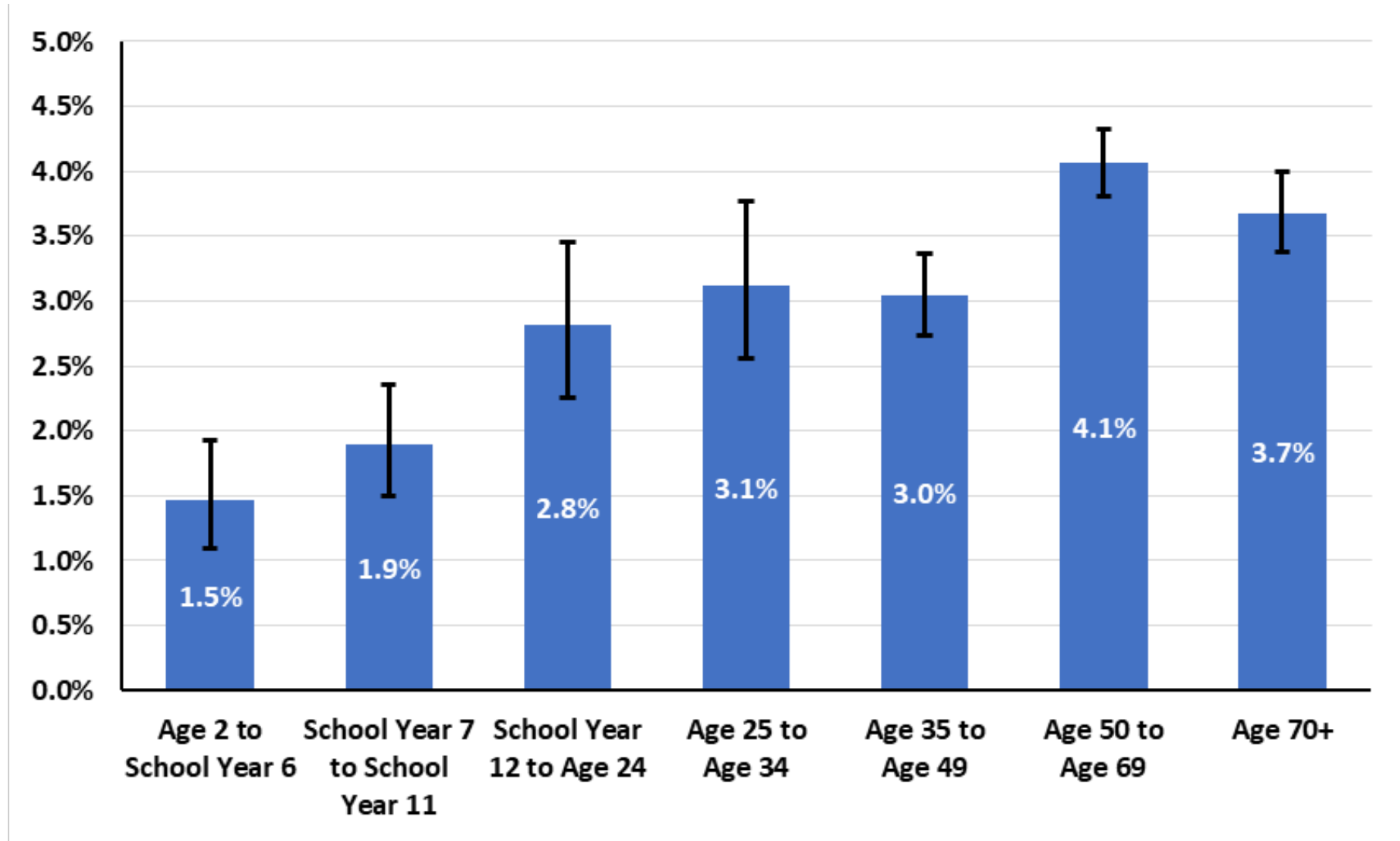
(Source: ONS Coronavirus (COVID-19) Infection Survey results)



Thanks to Bob Hawkins for the chart

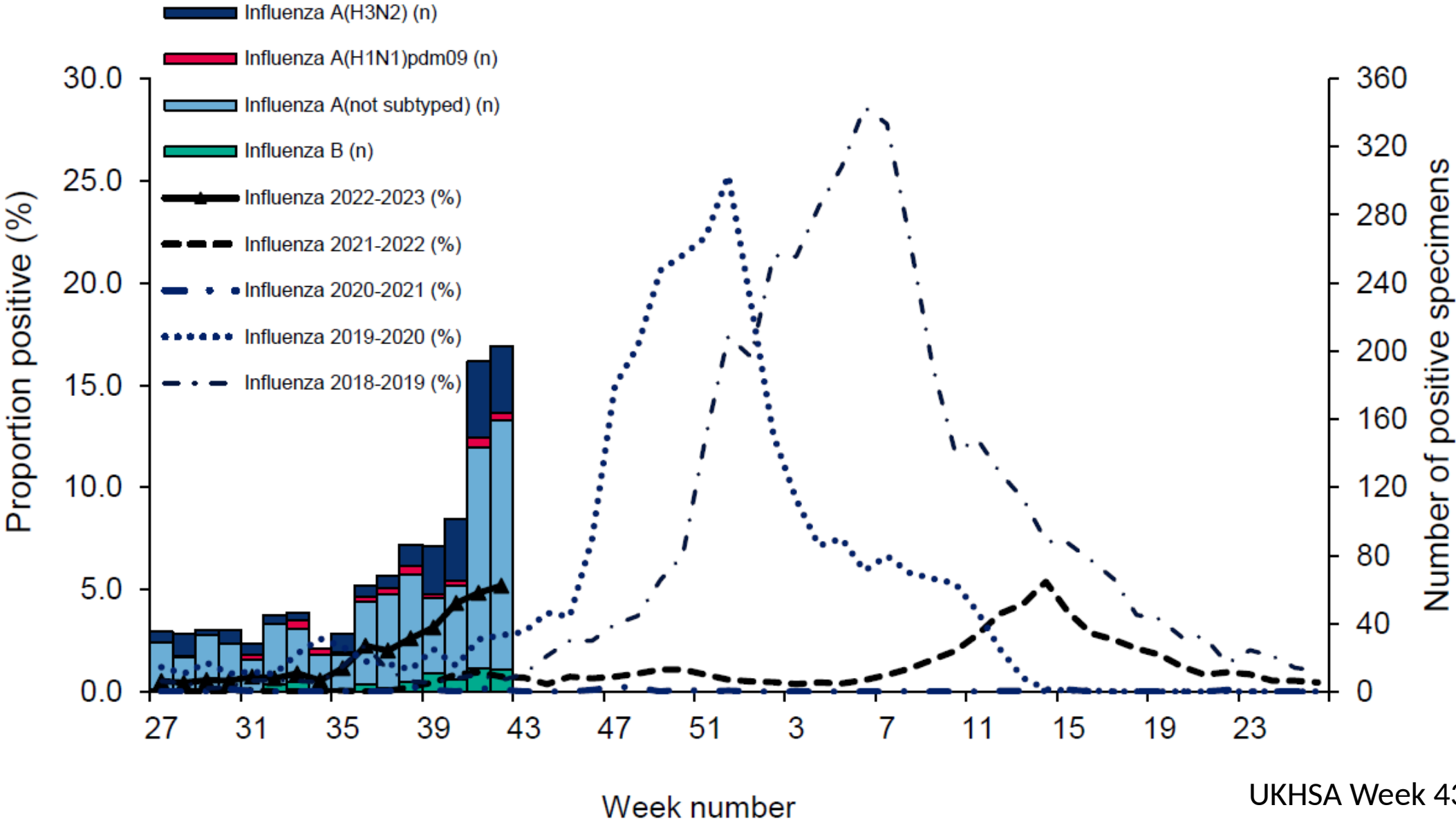
# Percent Testing Positive by Age for England: 14 Oct 2022

(Source: ONS Coronavirus (COVID-19) Infection Survey results)



Thanks to Bob Hawkins for the chart

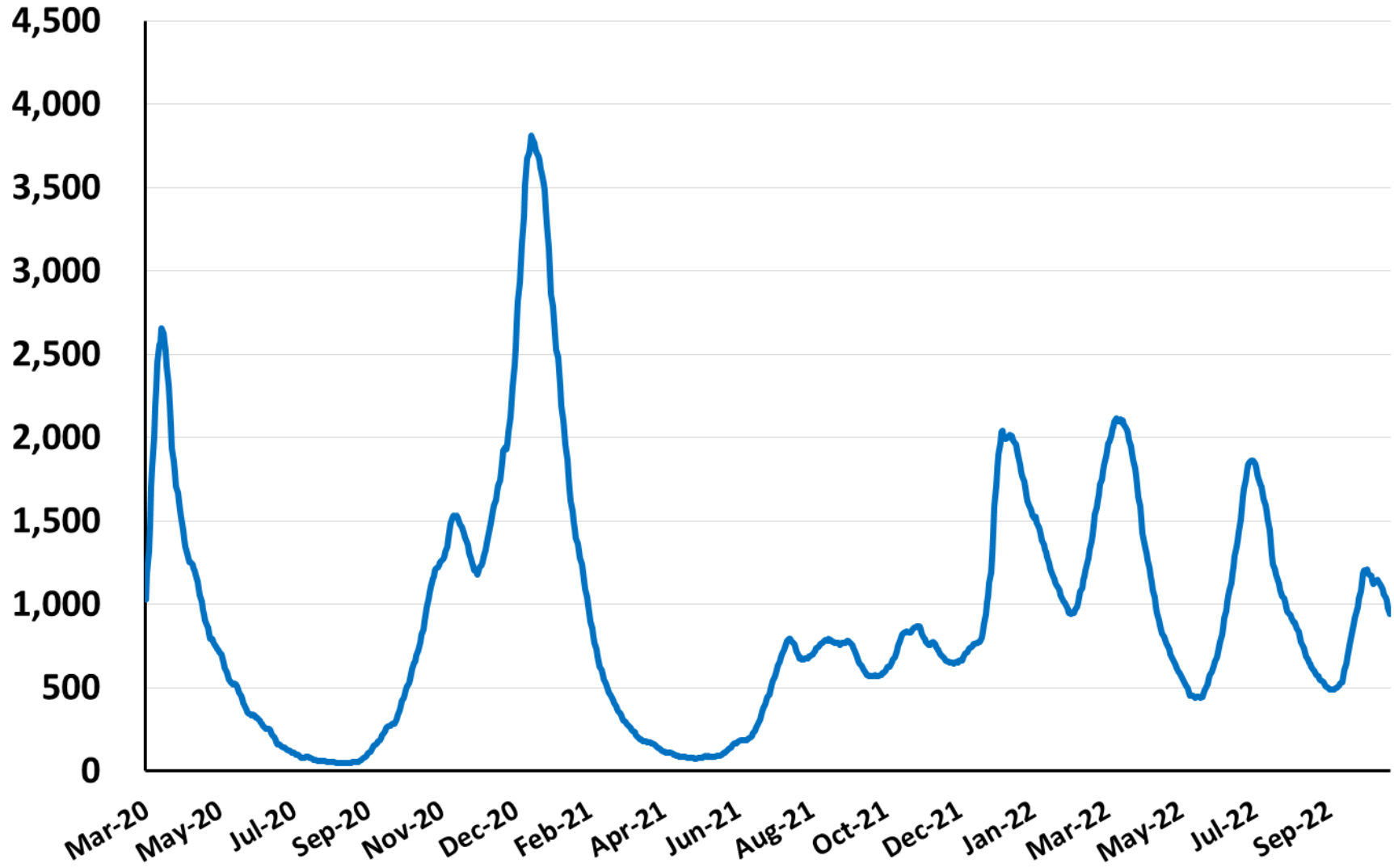
**Figure 10: Respiratory DataMart samples positive for influenza and weekly positivity (%) for influenza, England**



# HOSPITAL DATA

# Daily Hospital Admissions for England: Mar 26 2020 – Oct 24 2022

(Source: Covid Daily Update)



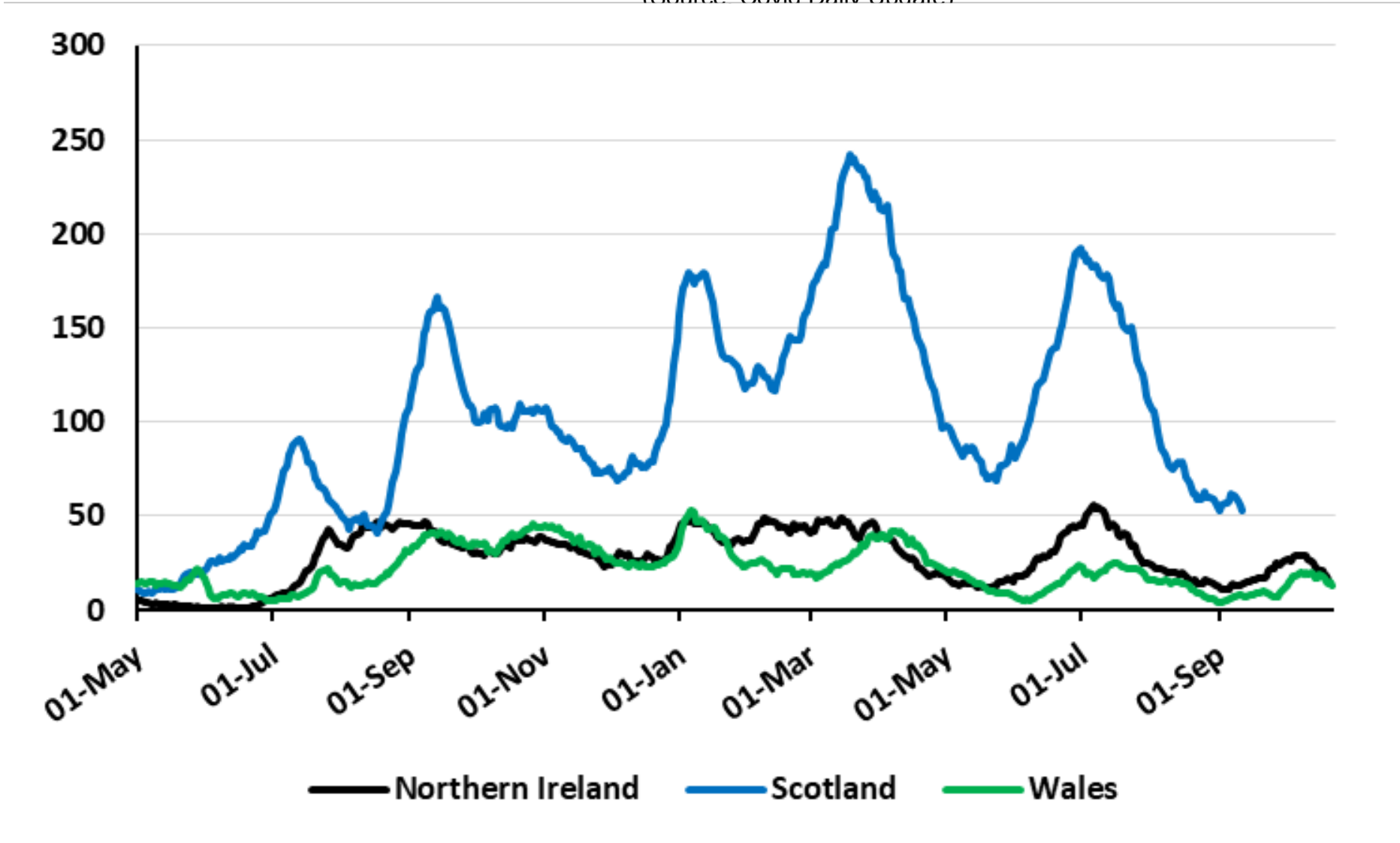
Daily Admissions (7DMA)

24-Oct-22



# Daily Hospital Admissions for Scotland, Wales and Northern Ireland May 1 2021 – Oct 22 2022

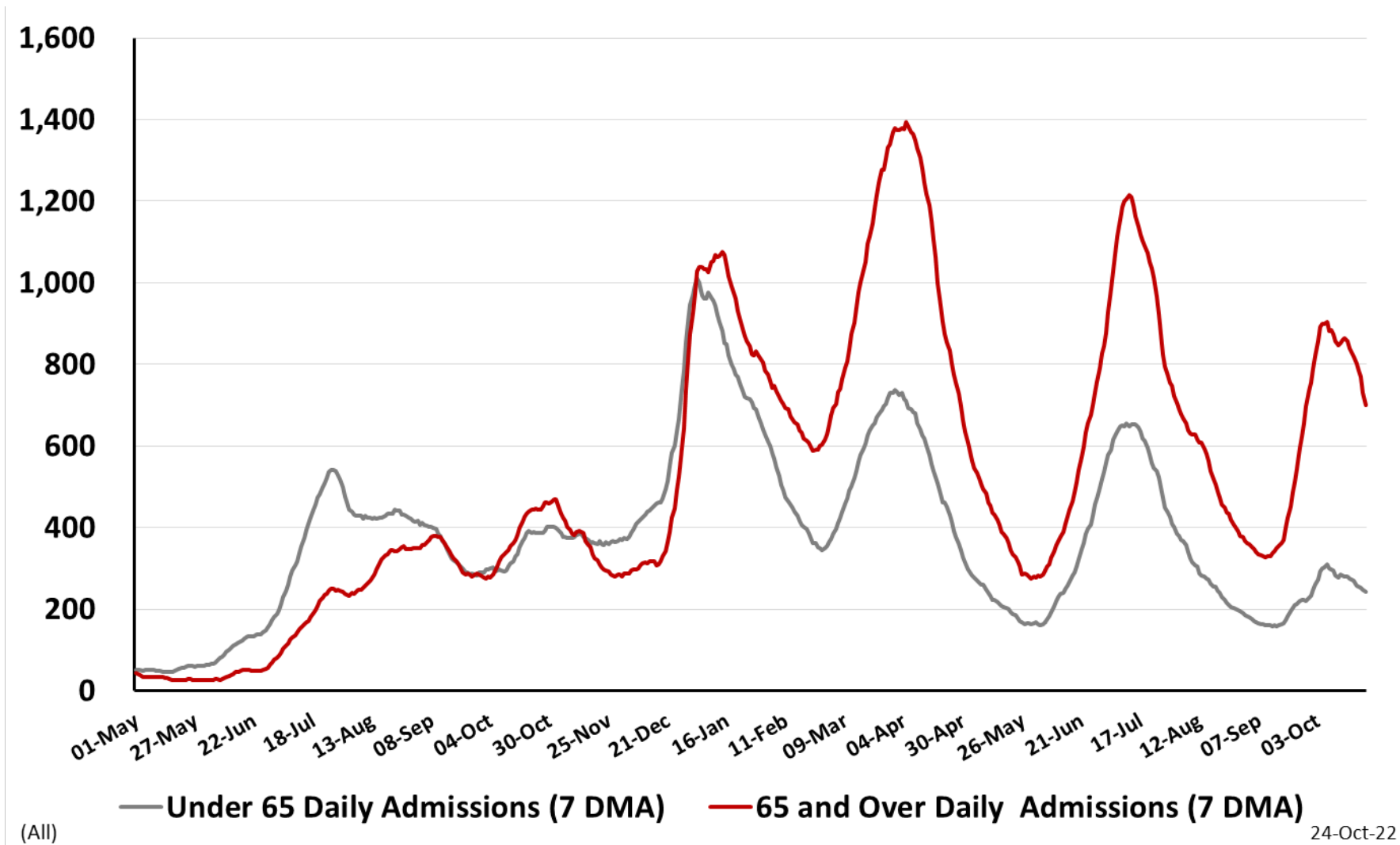
(Source: Covid Daily Update)



# Daily Hospital Admissions by Age for England

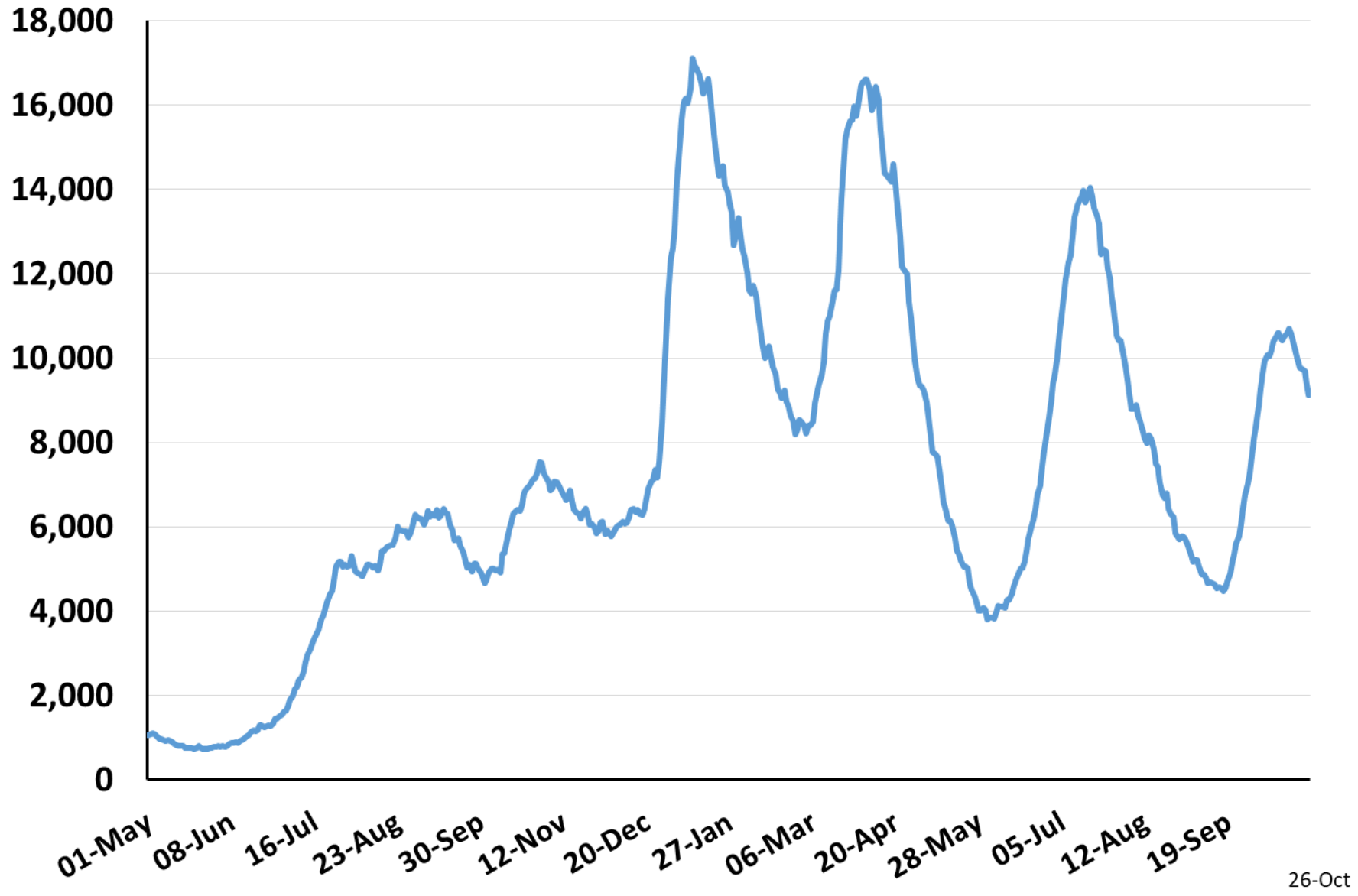
## May 1 2021 – Oct 24 2022

(Source: Covid Daily Update)



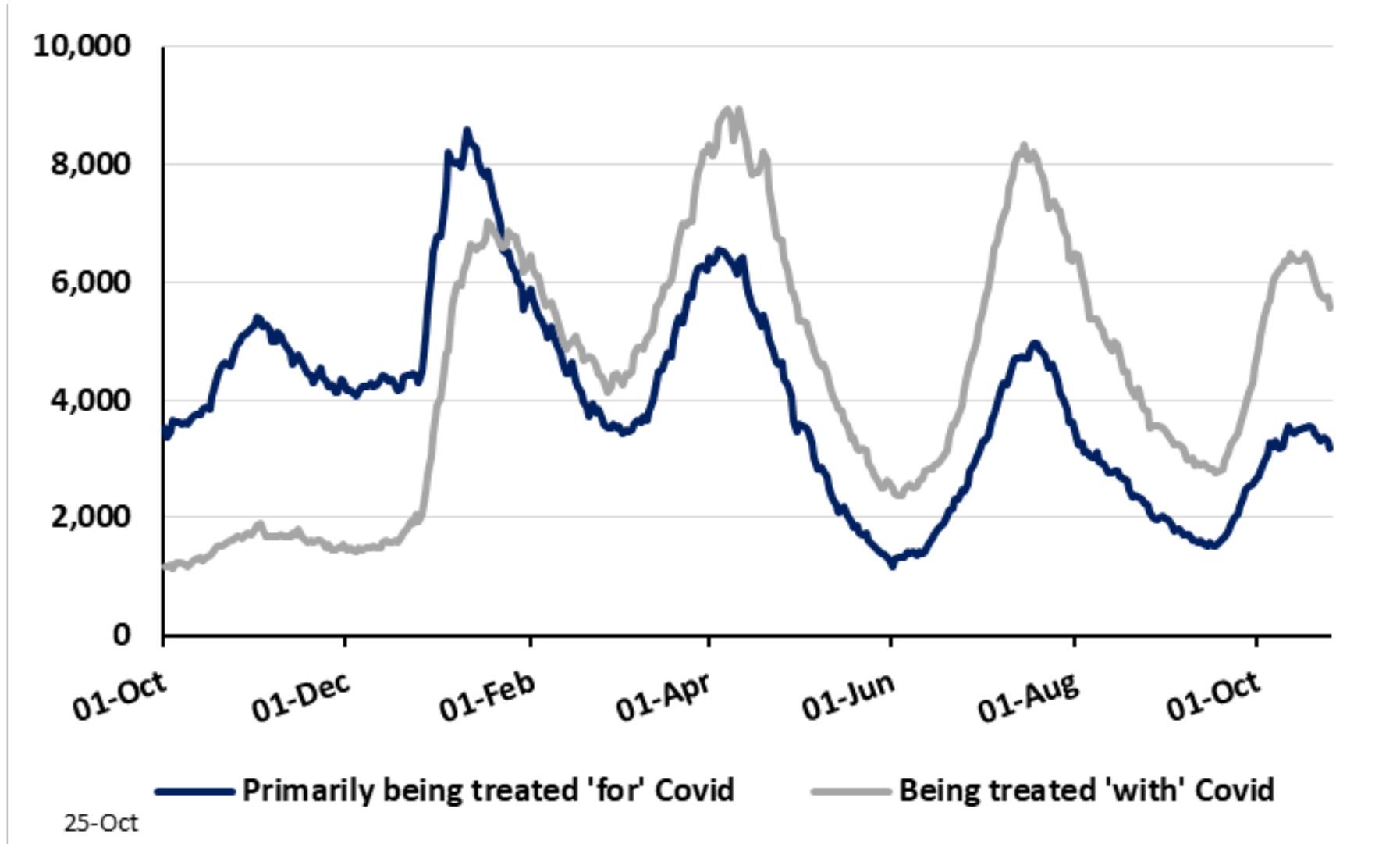
# Daily Occupied Beds for England: May 1 2021 – Oct 26, 2022

(Source: Covid Daily Update)



# Daily Occupied Beds by Primarily and Incidental Covid for England: Oct 1 2021 – Oct 25 2022

(Source: NHS COVID-19 Hospital Activity)

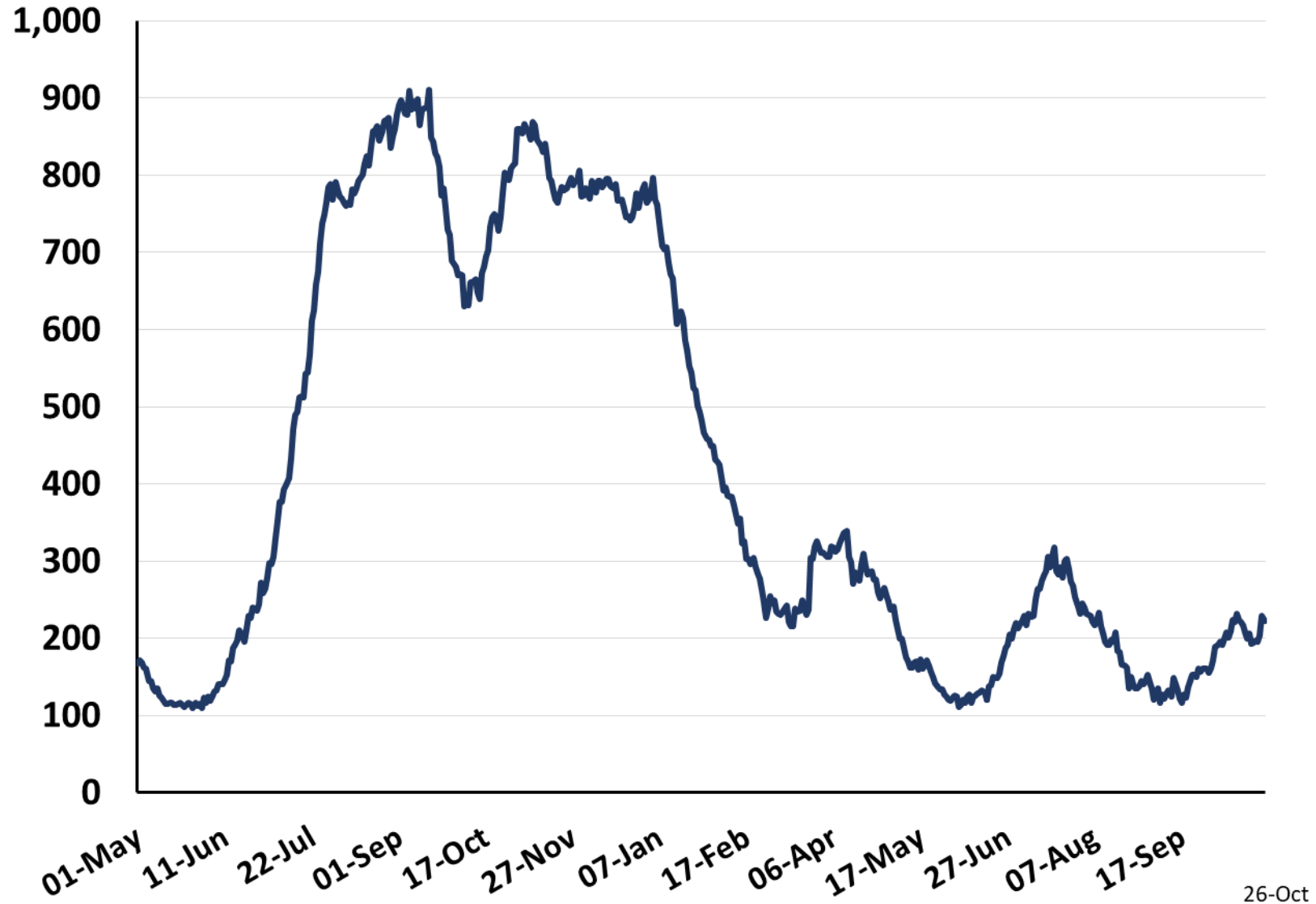


<https://www.england.nhs.uk/statistics/statistical-work-areas/covid-19-hospital-activity/>

# Daily Occupied Mechanically Ventilated Beds for England

## May 1 2021 – Oct 26, 2022

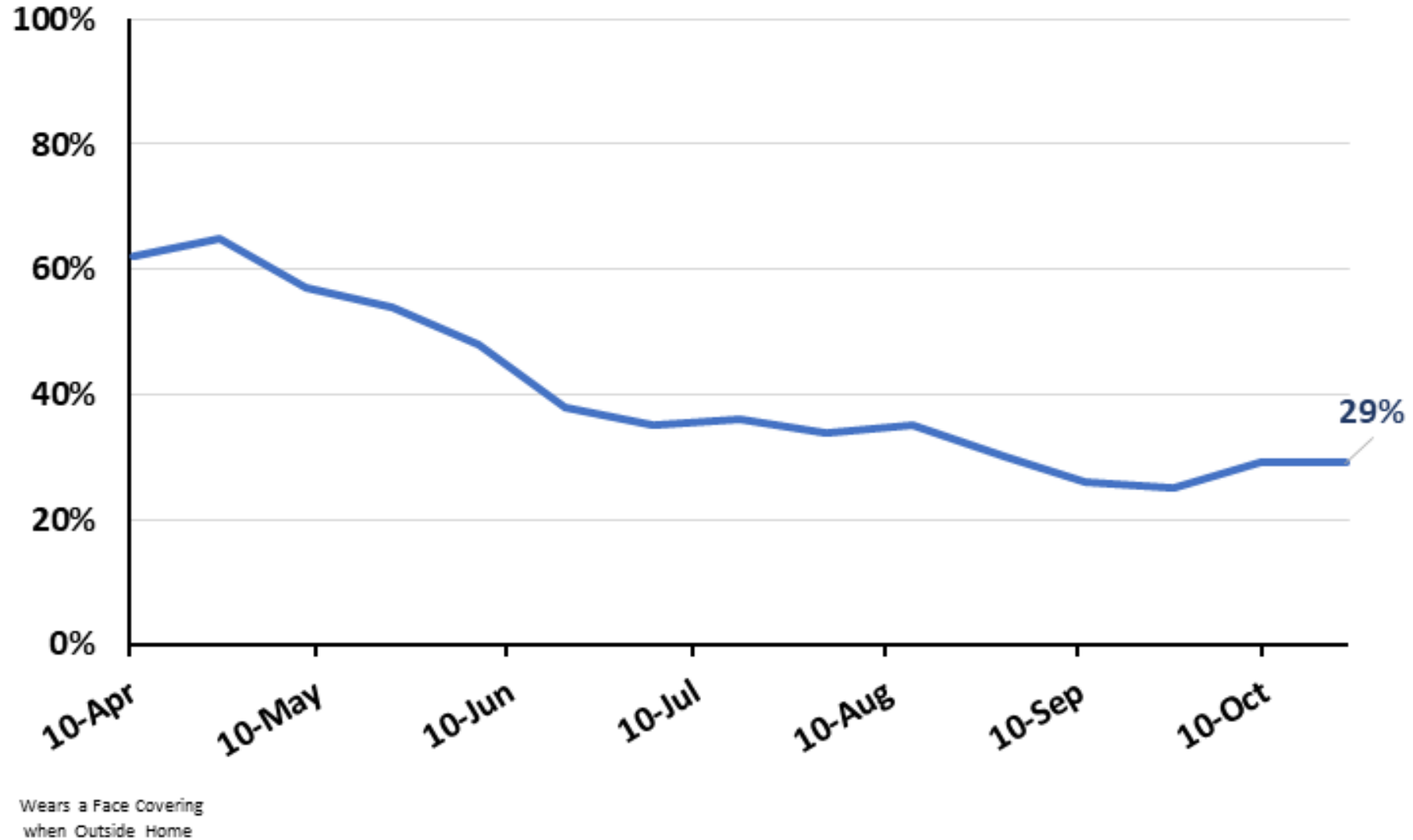
(Source: Covid Daily Update)



# PREVENTATIVE MEASURES

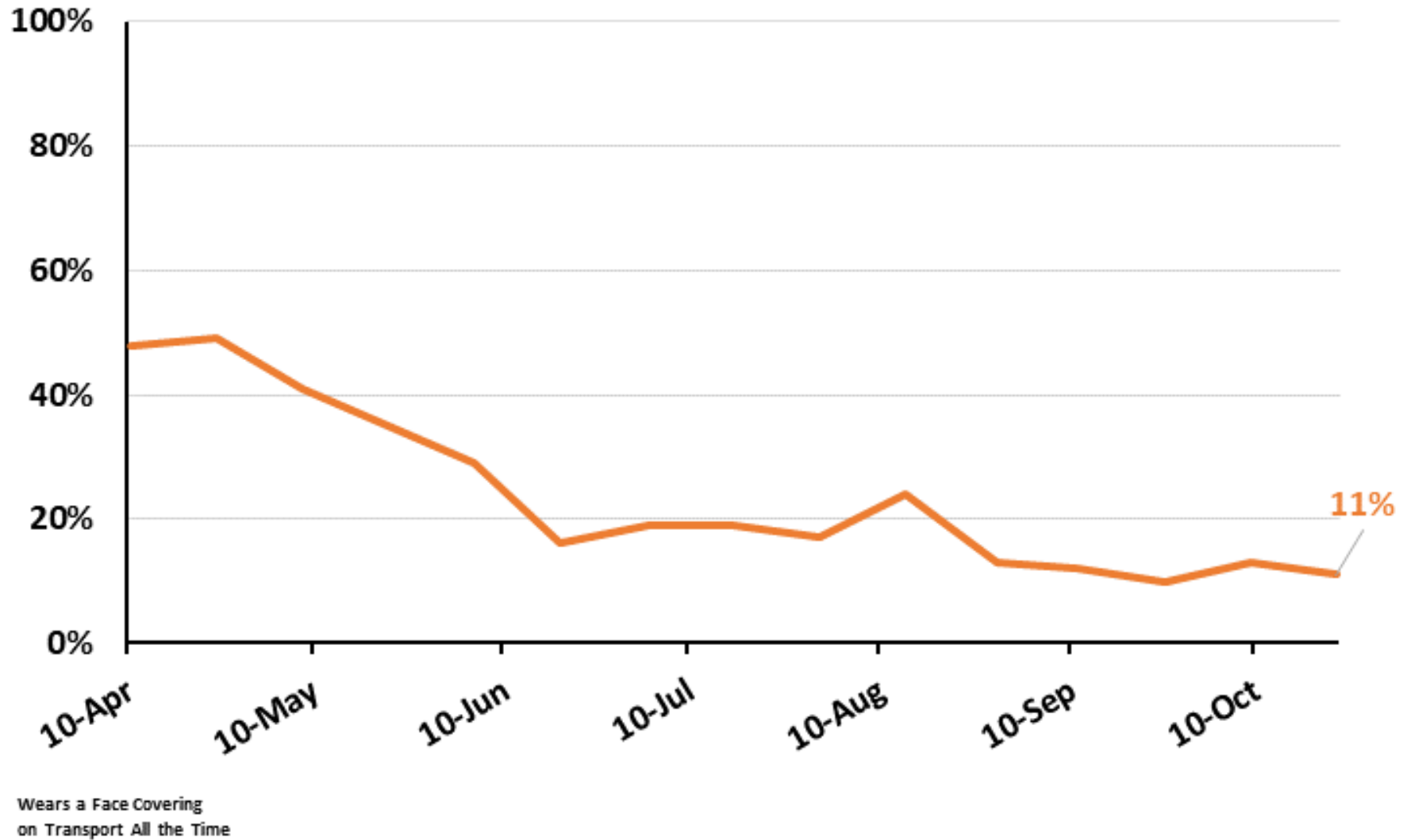
# Percent of People who Wear Face Coverings when Outside Home Week Ending Apr 10 to Oct 23, 2022

(Source: Coronavirus and the social impacts on Great Britain Survey)



# Percent of People who Wear Face Coverings All the Time when on Public Transport: Week Ending Apr 10 to Oct 23, 2022

(Source: Coronavirus and the social impacts on Great Britain Survey)



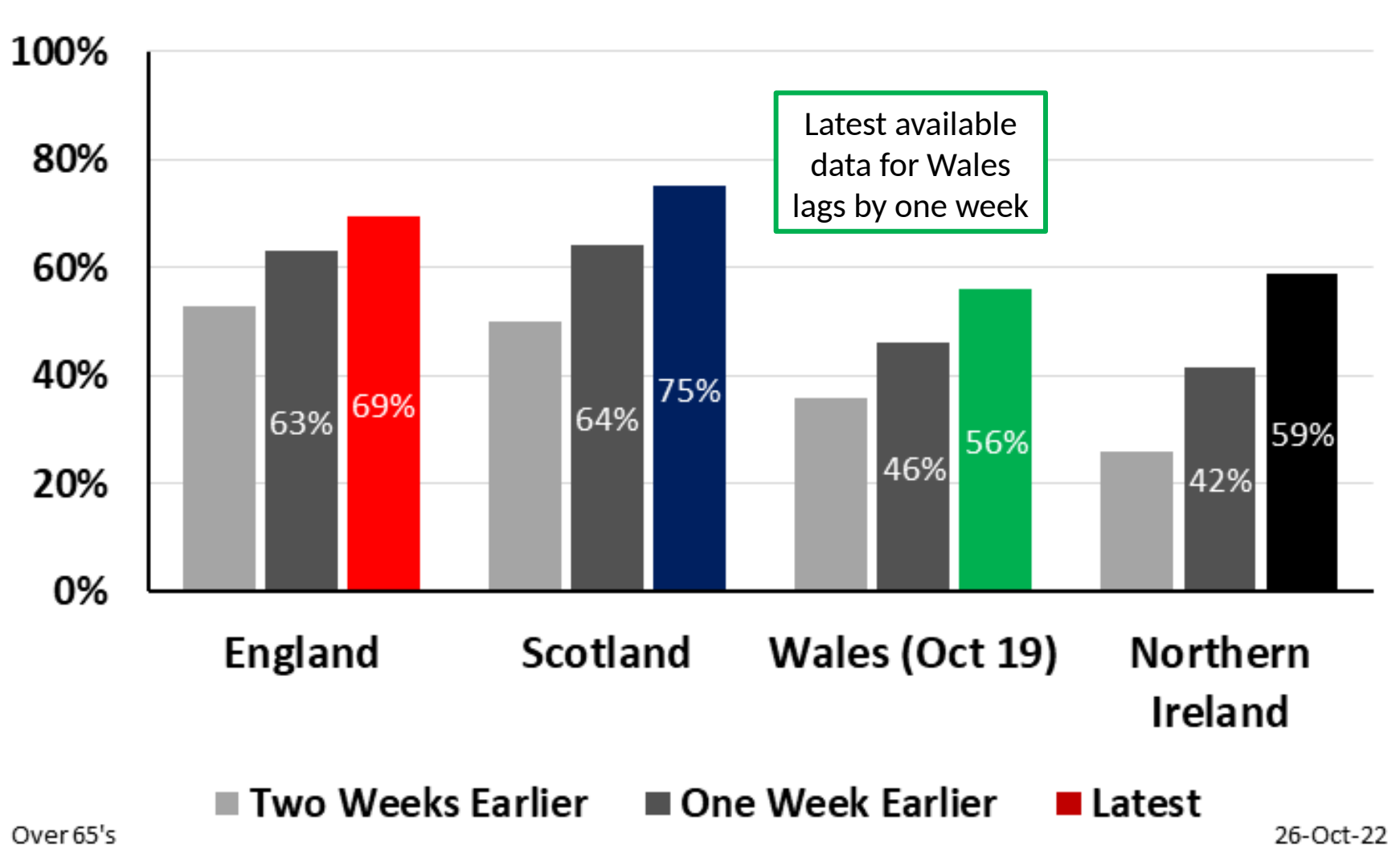


# VACCINATIONS

# Autumn 2022 Booster Coverage for Over 65's by Nation

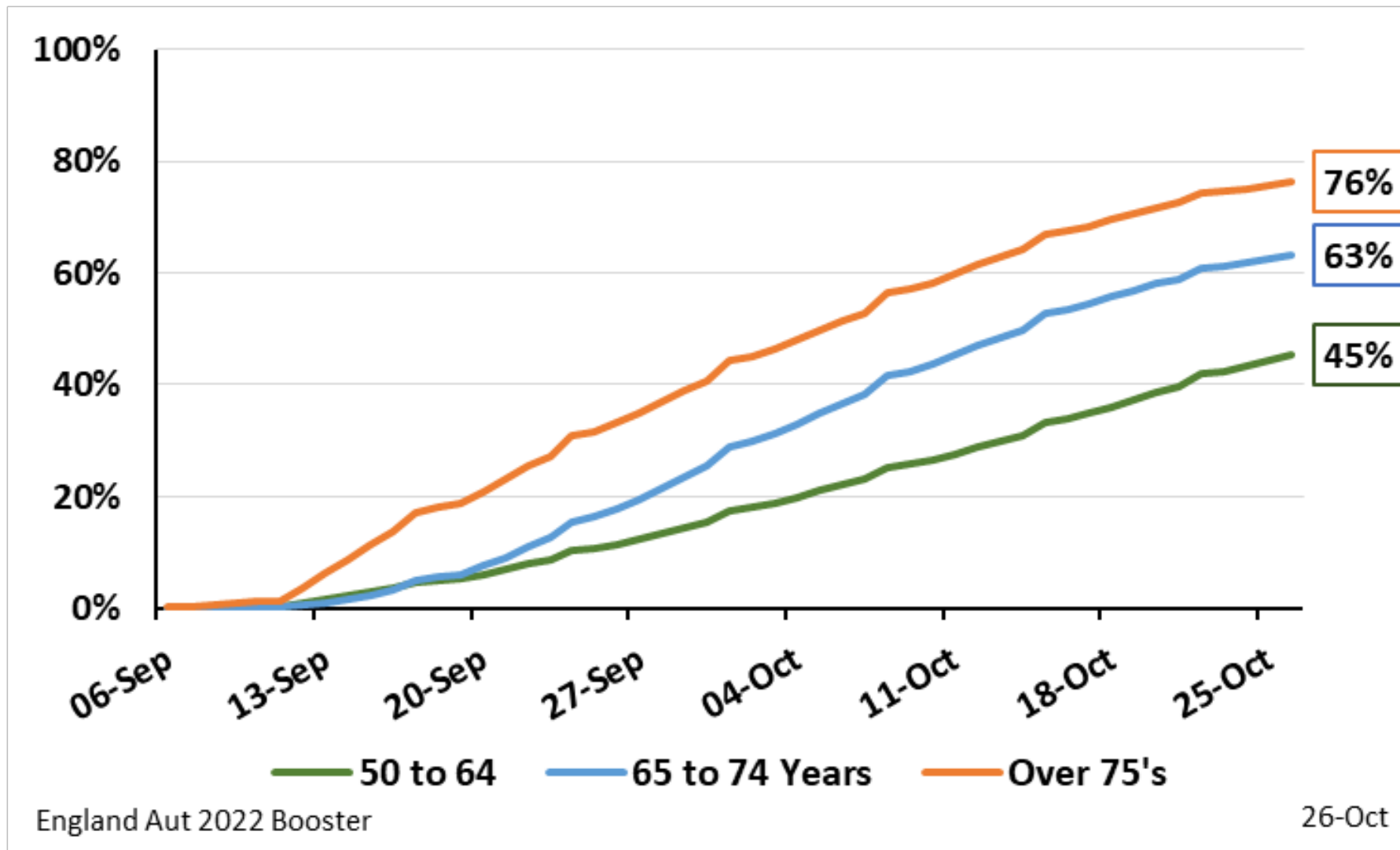
## Oct 26, 2022

(Source: Covid Daily Update, Scotland Vaccination Dashboard, Wales Vaccination Data, NI Vaccination Dashboard and Mid-2020 ONS Population Estimates)



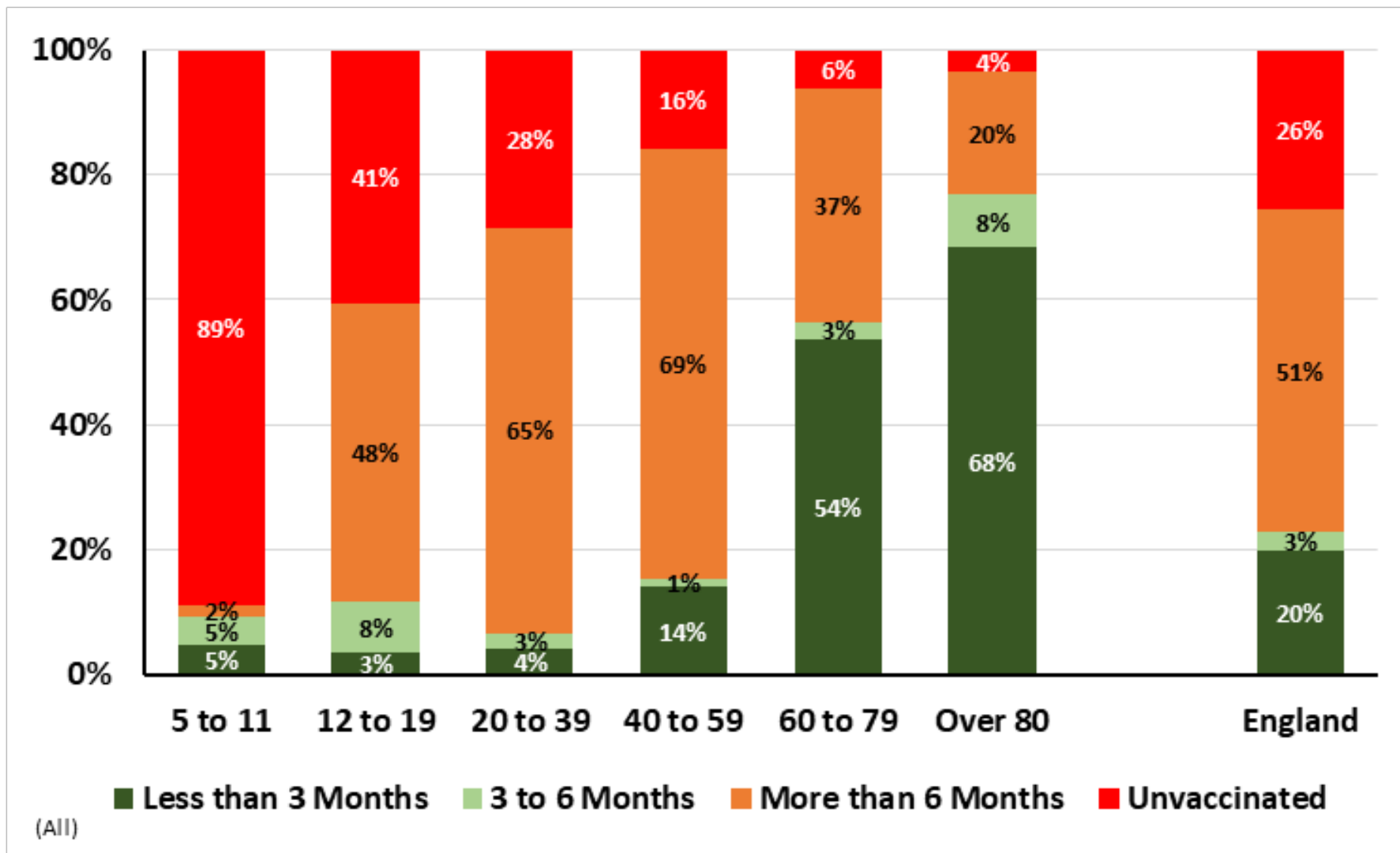
# Autumn 2022 Booster Coverage by Age Group in England Sep 4 to Oct 26, 2022

(Source: Covid Dashboard and ONS 2020 Population Estimates)



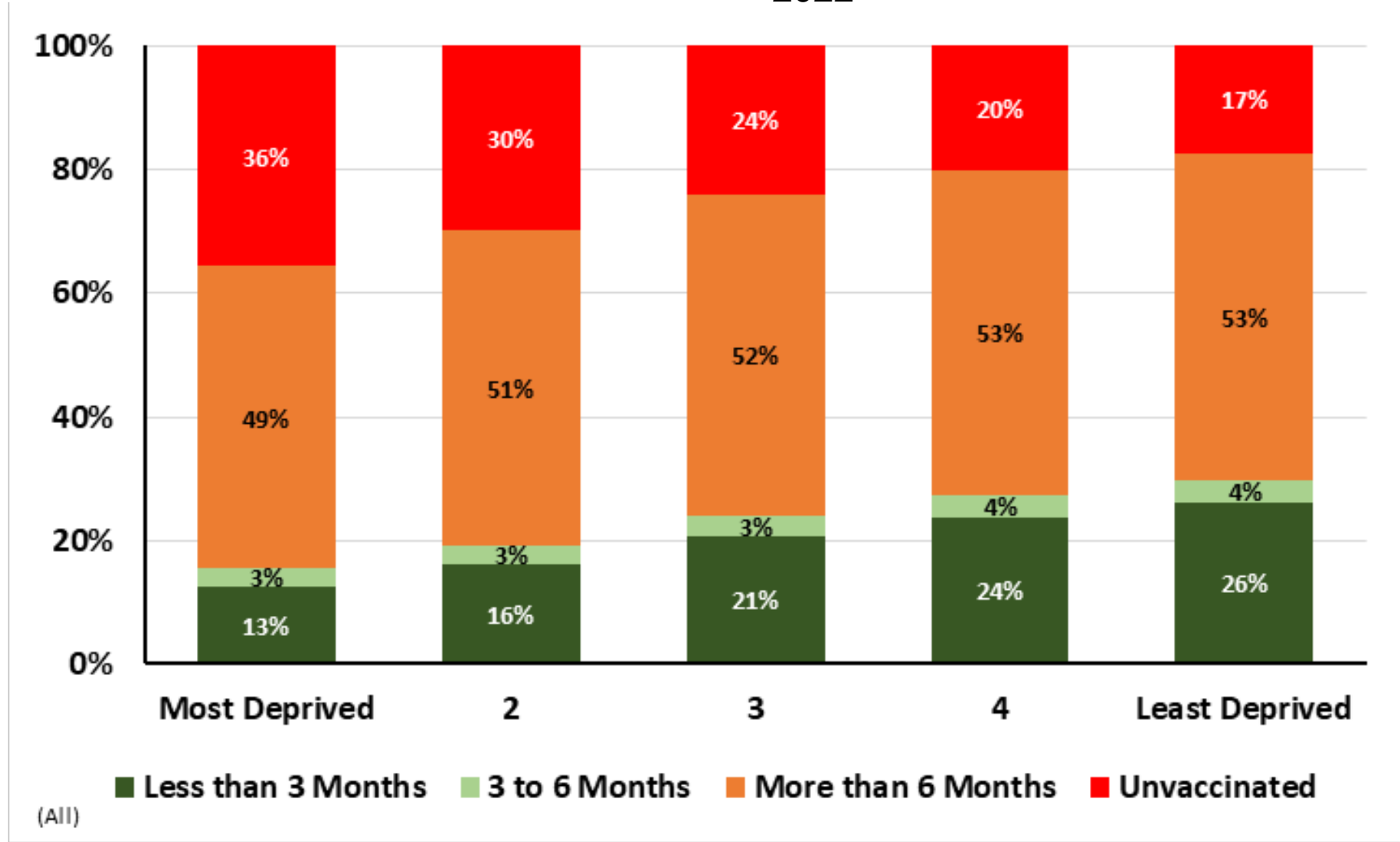
# Percent Vaccinated by Age in the Last 3 Months, 3 to 6 Months, More than 6 Months, and Unvaccinated: England - Oct 23, 2022

(Source: National Influenza and COVID-19 Surveillance Data Report based on NIMS Population Estimates)



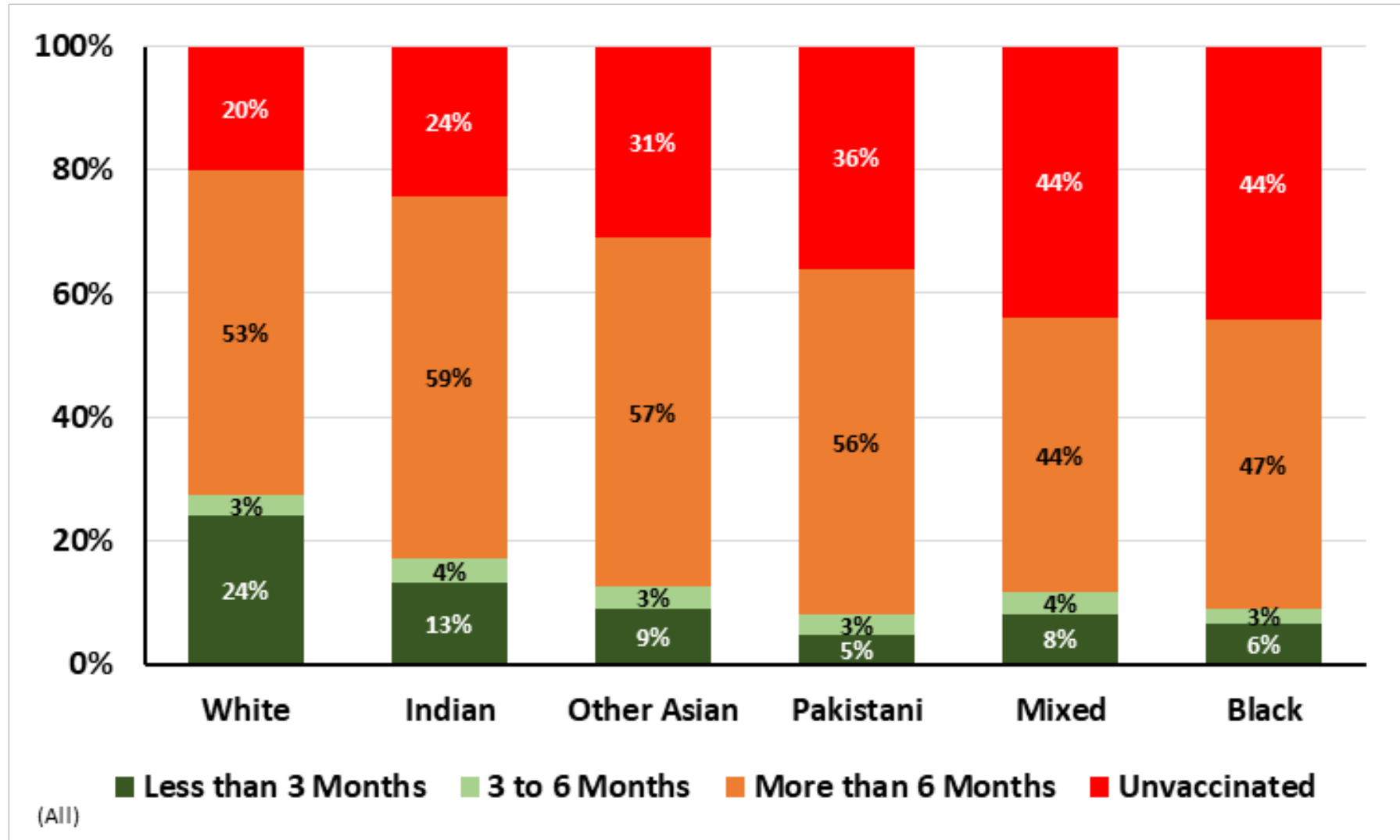
<https://www.gov.uk/government/statistics/national-flu-and-covid-19-surveillance-reports-2022-to-2023-season>

# Percent Vaccinated by Deprivation in the Last 3 Months, 3 to 6 Months, More than 6 Months, and Unvaccinated: England - Oct 23, 2022



# Percent Vaccinated by Ethnicity in the Last 3 Months, 3 to 6 Months, More than 6 Months, and Unvaccinated: England - Oct 23, 2022

(Source: National Influenza and COVID-19 Surveillance Data Report based on NIMS Population Estimates)

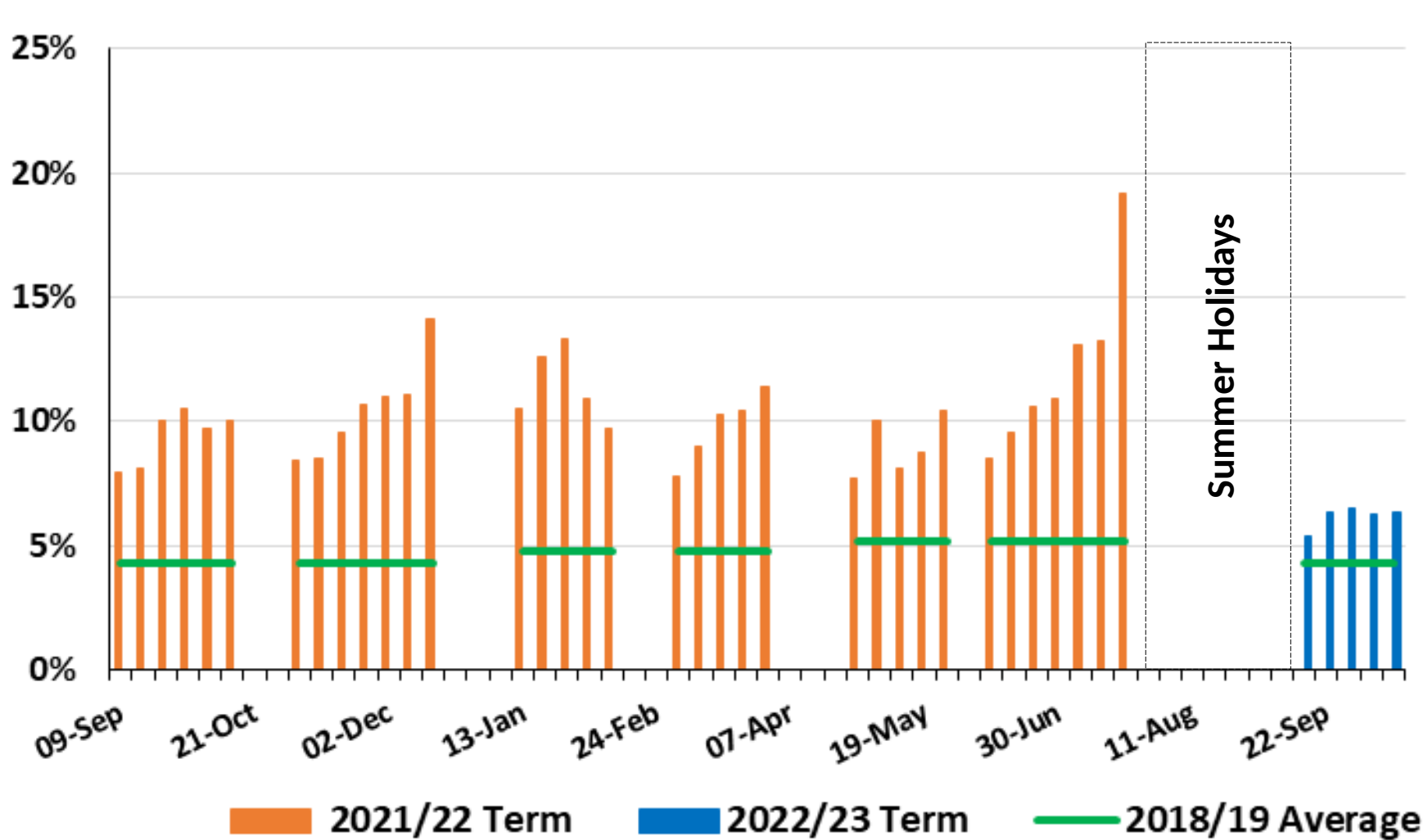


<https://www.gov.uk/government/statistics/national-flu-and-covid-19-surveillance-reports-2022-to-2023-season>

# SCHOOLS

## Percent of Students Absent from All State Schools in England from Sep 9, 2021 to Oct 13, 2022

(Source: Attendance in education and early years settings during the coronavirus (COVID-19) outbreak and Pupil attendance in schools reports)

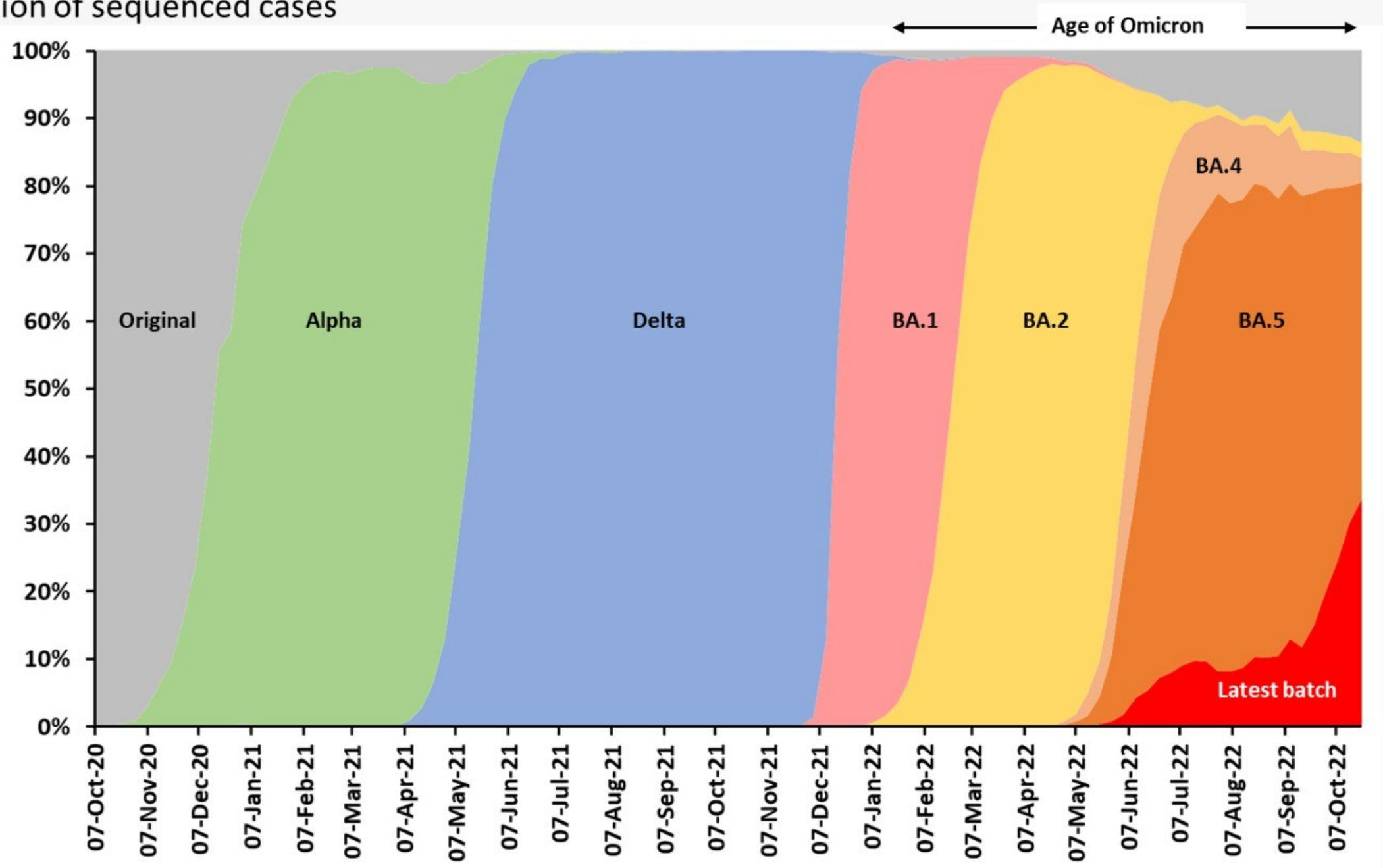


All State Schools



# VARIANTS

# Proportion of sequenced cases



Thanks to Christina Pagel for the chart. Data to 22 October 2022. COG data.

# Data Presentation

## 28 October 2022

- Infections in England levelling off (ONS survey to 17 October)
- Past the BA.5 peak
- Covid admissions and Covid patients in hospital falling
- Variants: Proportion of BQ.1 / BQ.1.1 increasing