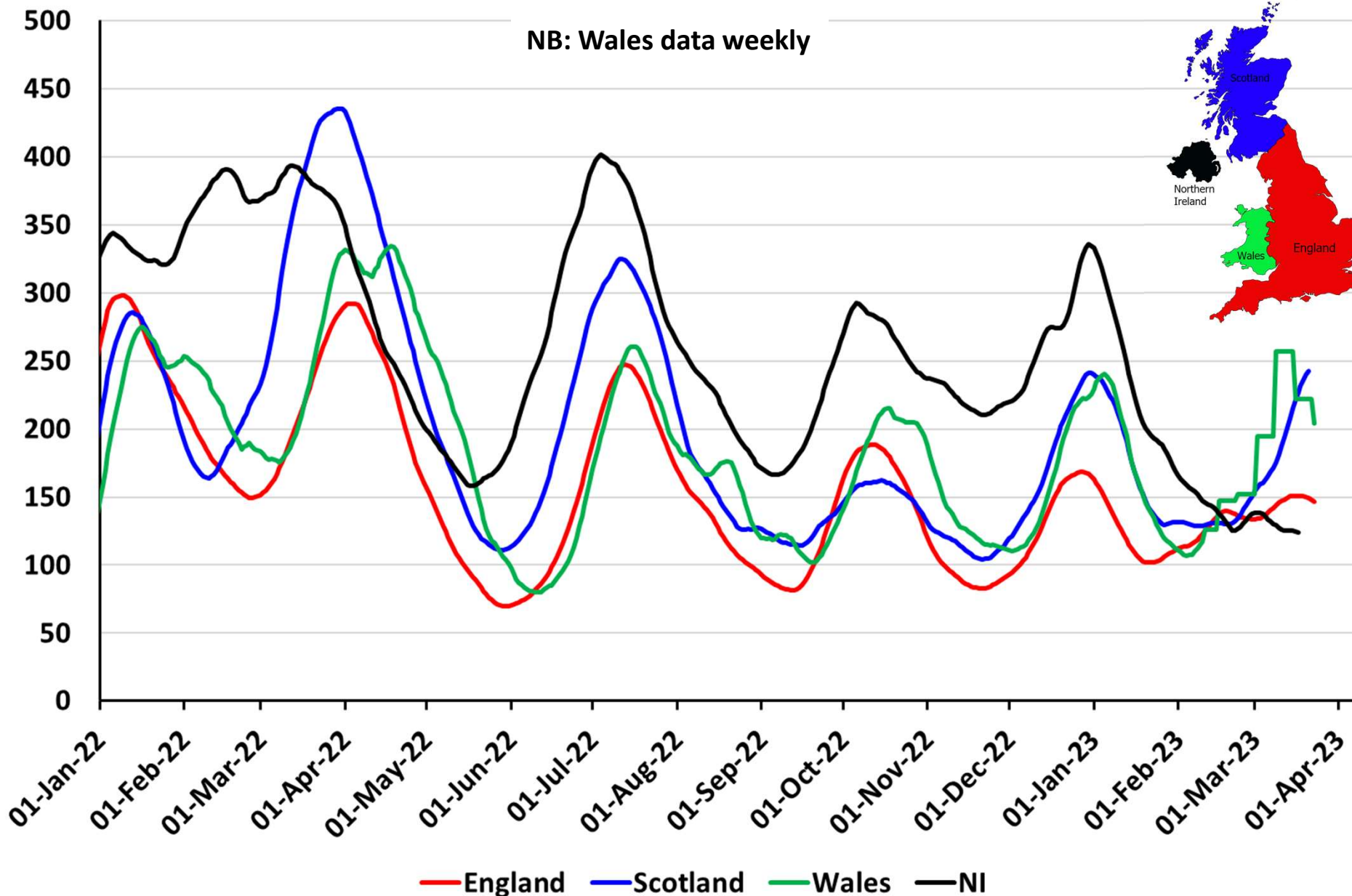


1. Hospitalisations and deaths
2. Vaccines
3. Long Covid
4. In terms of things going away, it's data not Covid
5. Clinically Extremely Vulnerable (CEV) people

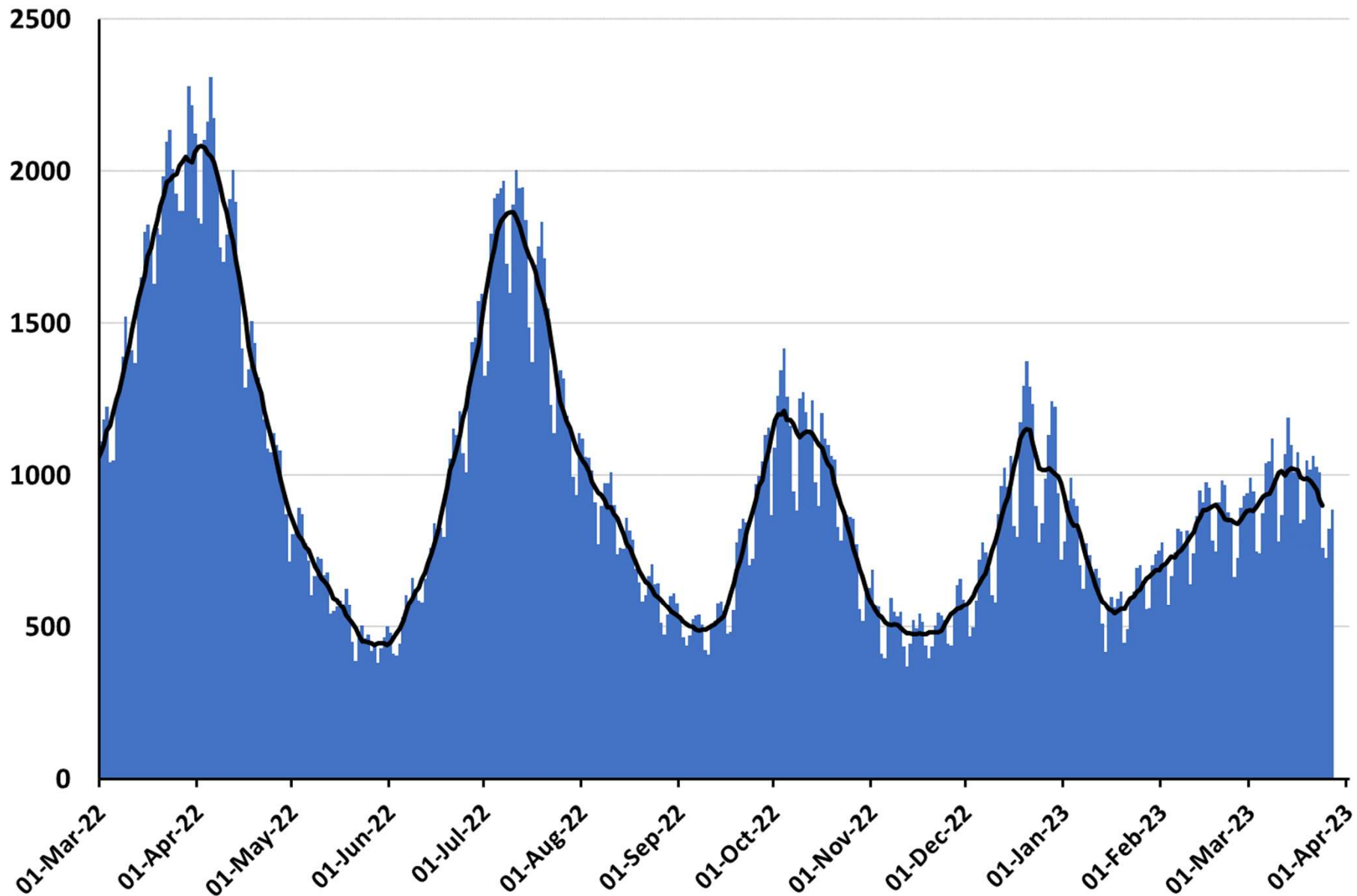
With many thanks to Bob Hawkins for his help in collating the data

Hospitals and deaths

Number of people in hospital with Covid per million people – UK nations 7 day rolling average to 29 March 2023



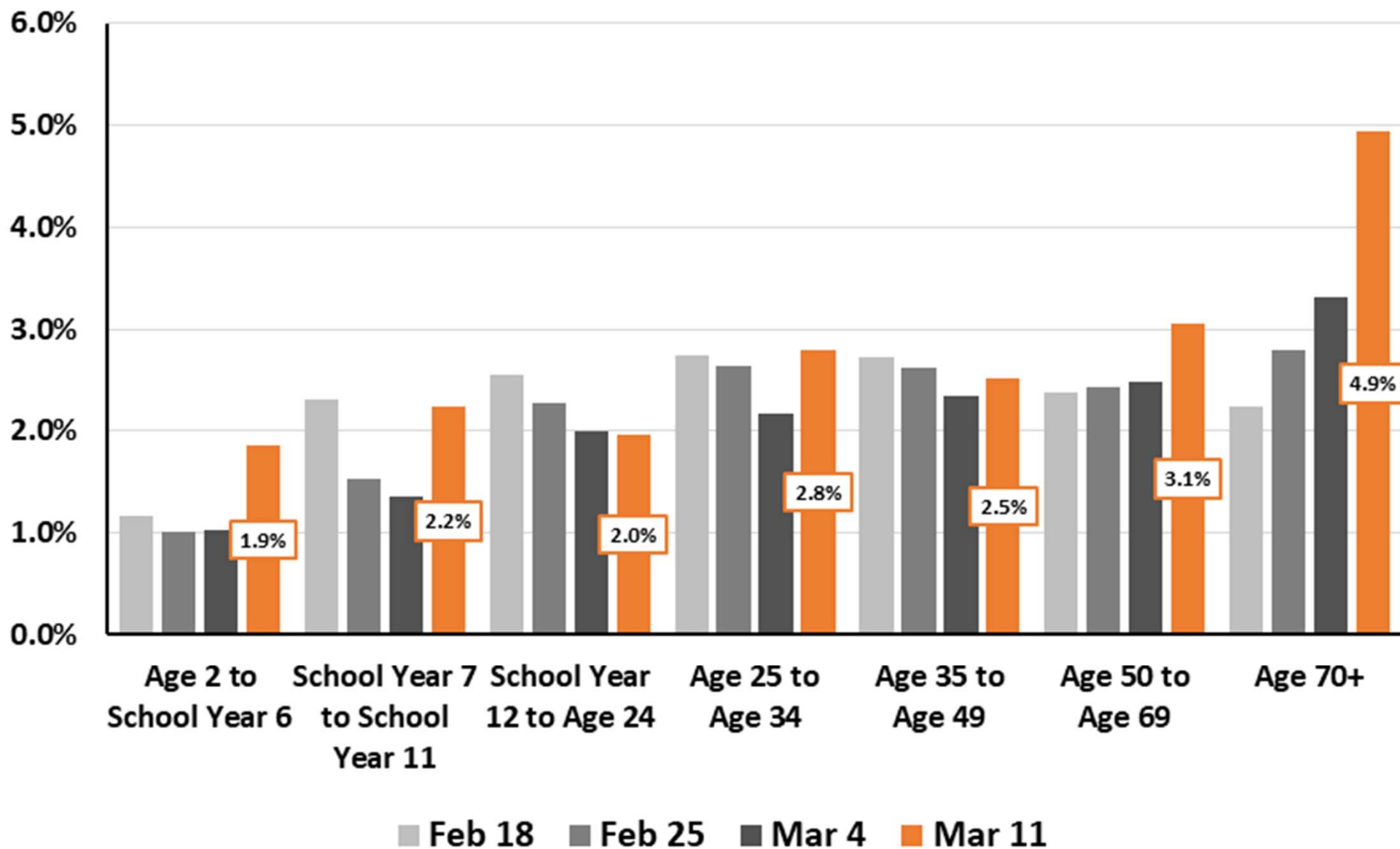
Number of daily hospital admissions with Covid in England to 27 Mar 2023



Data from <https://www.england.nhs.uk/statistics/statistical-work-areas/covid-19-hospital-activity/>

Percent Testing Positive by Age for England, 4 weeks to 11 March 2023

(Source: ONS Coronavirus (COVID-19) Infection Survey results)

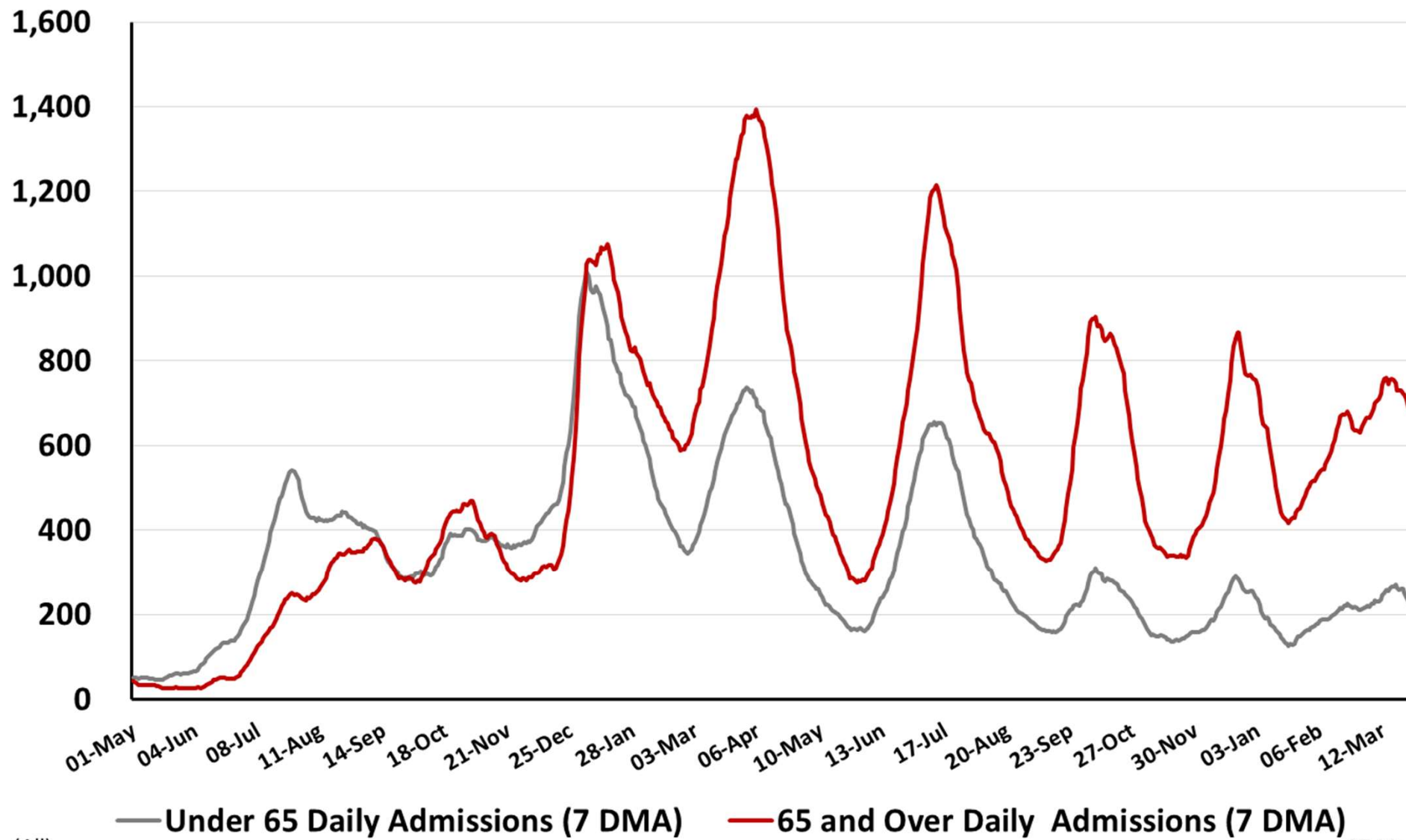


Thanks to Bob Hawkins for the chart

Daily Hospital Admissions by Age for England

1 May 2021 – 27 Mar 2023

(Source: Covid Daily Update)



(All)

27-Mar-23

Thanks to Bob Hawkins for the chart

Hospital data is becoming less interpretable and less reflective of how much Covid there is in the community

By Michelle Roberts

Digital health editor

BBC News – 30 March 2023

Covid testing is being scaled back even further in England from April.

It is part of the "living with Covid" approach that relies on vaccines to keep people safe.

Most staff and patients in hospitals and care homes will no longer be given swab tests, even if they have symptoms.

Some will though, such as staff working with severely immunocompromised patients or if there is an outbreak on a ward or in a hospice or prison, for example.

Hospital data is becoming less interpretable and less reflective of how much Covid there is in the community

By Michelle Roberts

Digital health editor

BBC News – 30 March 2023

Covid testing is being scaled back even further in England from

It is part of the "living with Covid" approach +
people safe.

Most staff and
swab

Changes to COVID-19 testing – use cases consultation underway and financial arrangements

NHS 2 March 2023

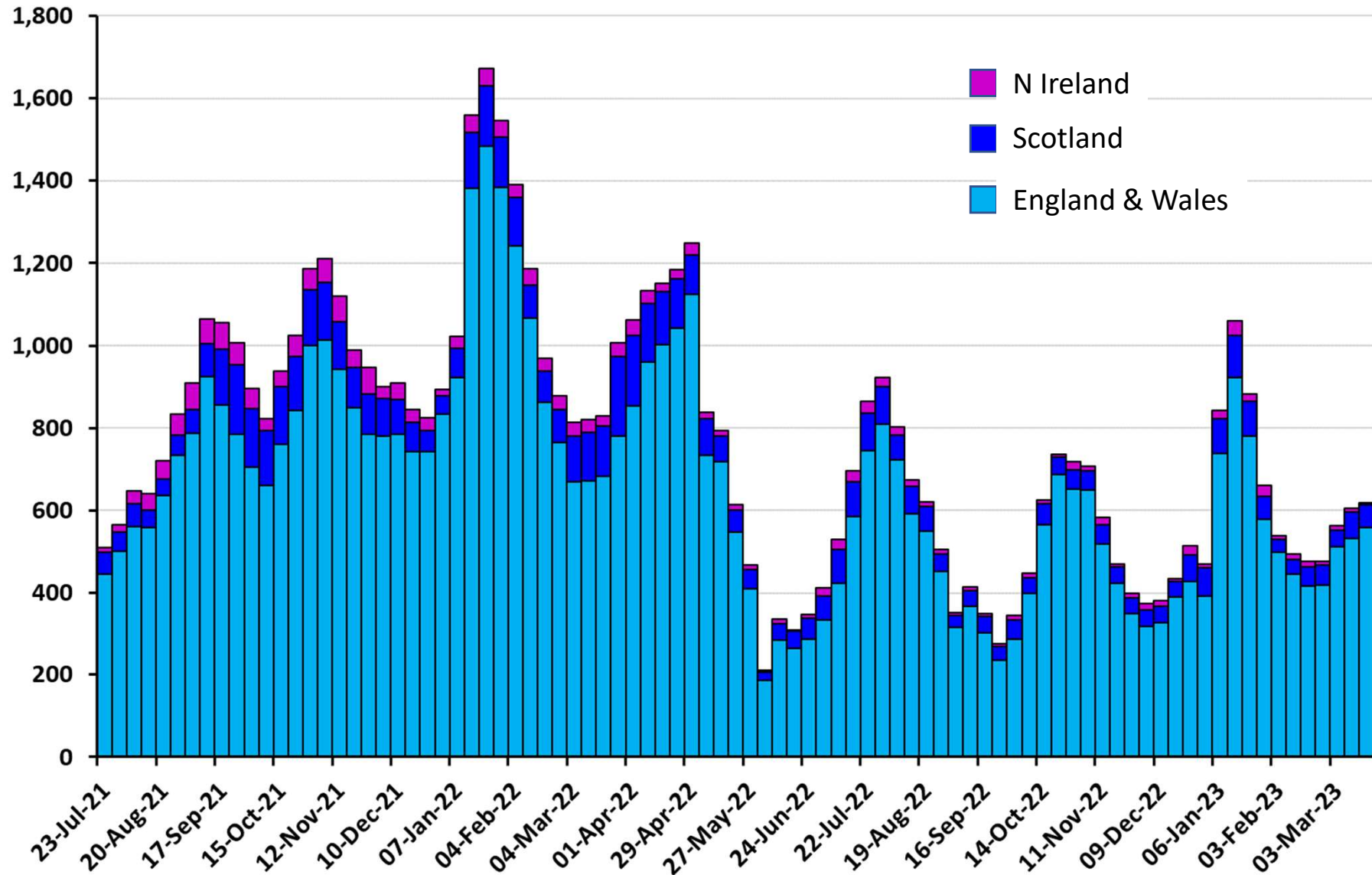
We last wrote to you regarding changes to [COVID-19 testing protocols](#) in August of 2022.

We are now preparing for a further set of changes in use cases reflecting an updated assessment of pandemic and health impacts of COVID-19 based on the latest public health advice, and a change to the way in which COVID-19 PCR tests will be funded in the NHS.

Clinical use cases

UKHSA is working with the British Infection Association and NHS teams to confirm its approach to COVID-19 testing in the NHS in England from 1 April 2023. This will include defining the use cases – for both COVID-19 diagnosis and reducing transmission – that will be recommended across the NHS systems. Once this work is complete, the NHS will be required to operationalise new protocols in line with revised advice from UKHSA. We expect that this will reduce the requirement for PCR testing for NHS patients and staff.

Number of deaths with Covid on the **death certificate** by week registered in the UK 13 August 2021 to 17 March 2023



Data from :

England and Wales: www.ons.gov.uk/peoplepopulationandcommunity/birthsdeathsandmarriages/deaths/bulletins/deathsregisteredweeklyinenglandandwalesprovisional/latest

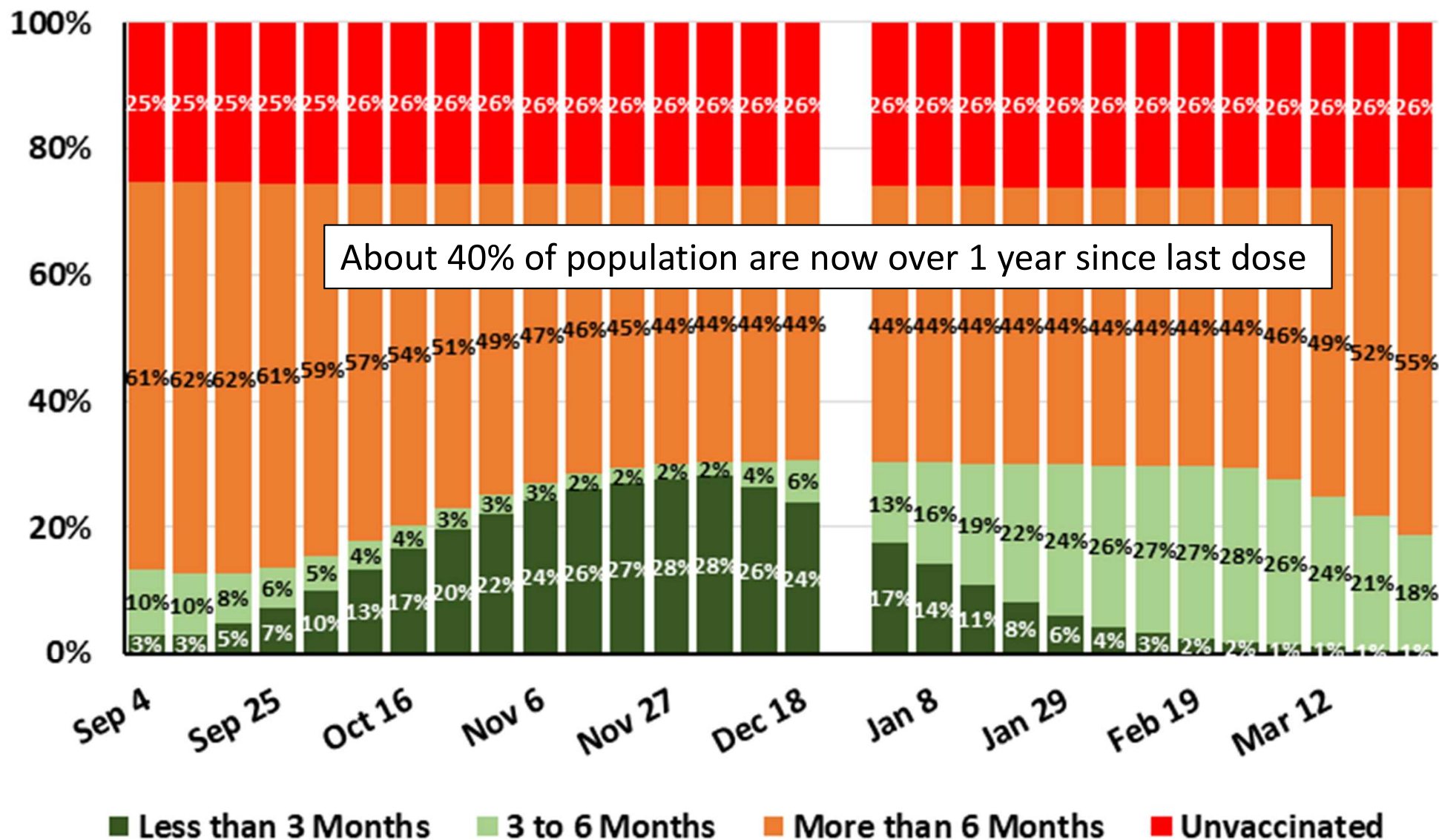
Scotland: <https://data.gov.scot/coronavirus-covid-19/detail.html>

Northern Ireland: www.nisra.gov.uk/publications/weekly-deaths

Vaccines

Percent Vaccinated in the Last 3 Months, 3 to 6 Months, More than 6 Months, and Unvaccinated: England Sep 4 – Mar 26, 2023

(Source: National Influenza and COVID-19 Surveillance Data Report based on NIMS Population Estimates)



About 40% of population are now over 1 year since last dose

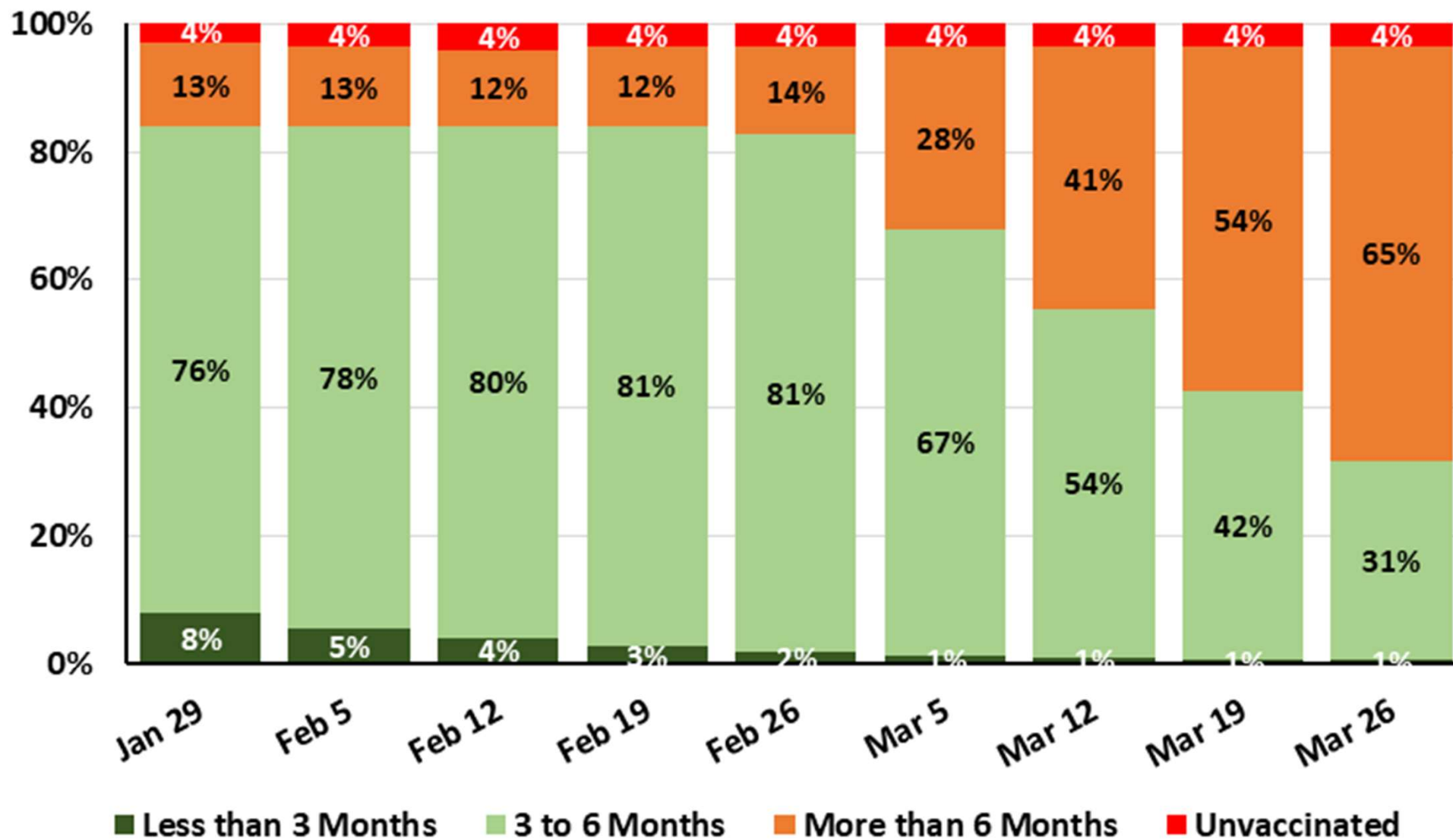
(All)

<https://www.gov.uk/government/statistics/national-flu-and-covid-19-surveillance-reports-2022-to-2023-season>

Thanks to Bob Hawkins for the chart

Percent of Over 80s Vaccinated in the Last 3 Months, 3 to 6 Months, More than 6 Months, and Unvaccinated: England Jan 30 – Mar 26, 2023

(Source: National Influenza and COVID-19 Surveillance Data Report based on NIMS Population Estimates)



Over 80 Year Old

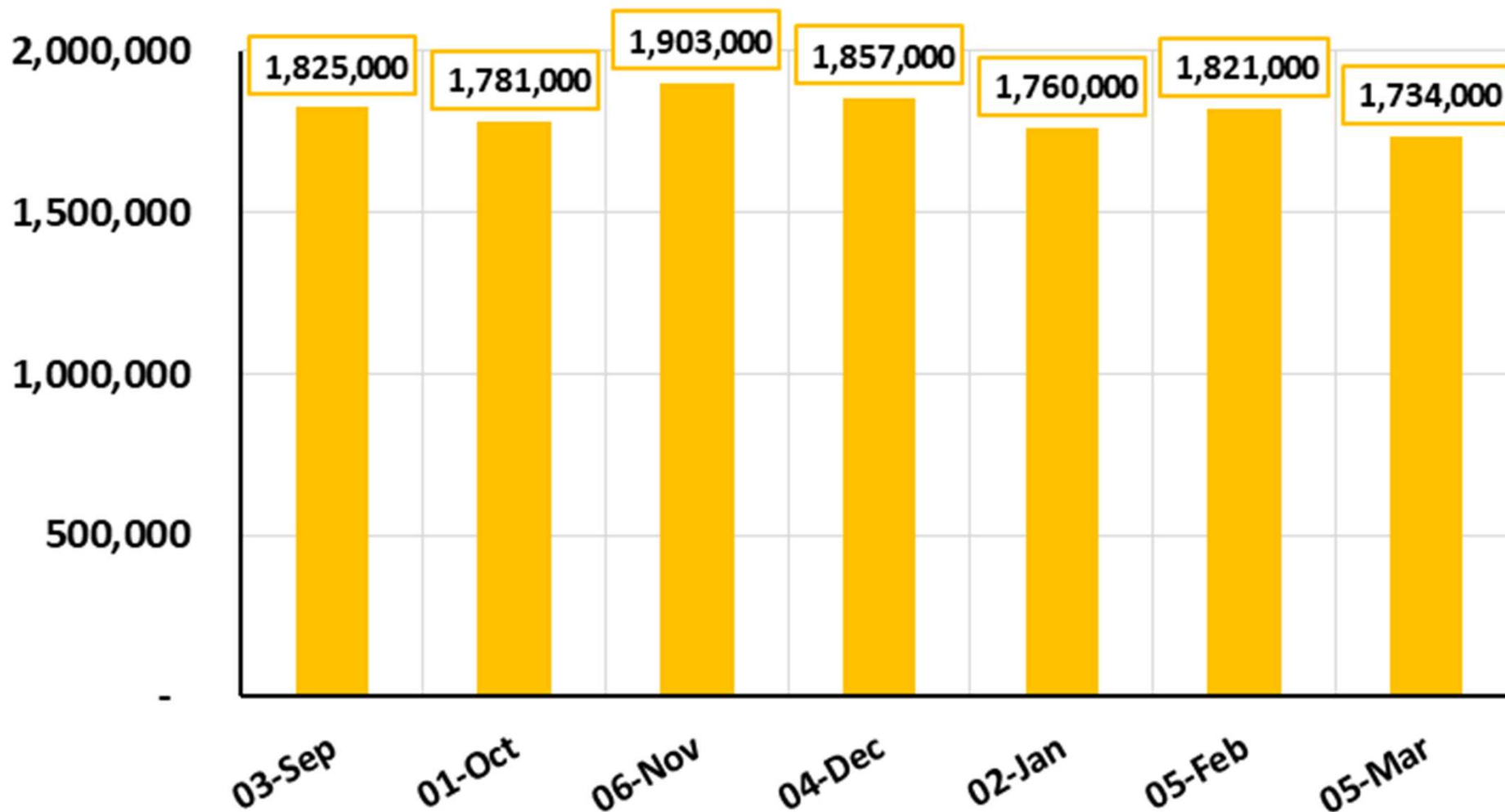
<https://www.gov.uk/government/statistics/national-flu-and-covid-19-surveillance-reports-2022-to-2023-season>

Thanks to Bob Hawkins for the chart

Long Covid update
(last one?)

Number of People Living with Self-Reported Long Covid 12 Weeks after Infection in the UK: Sep 3, 2022 to Mar 5, 2023

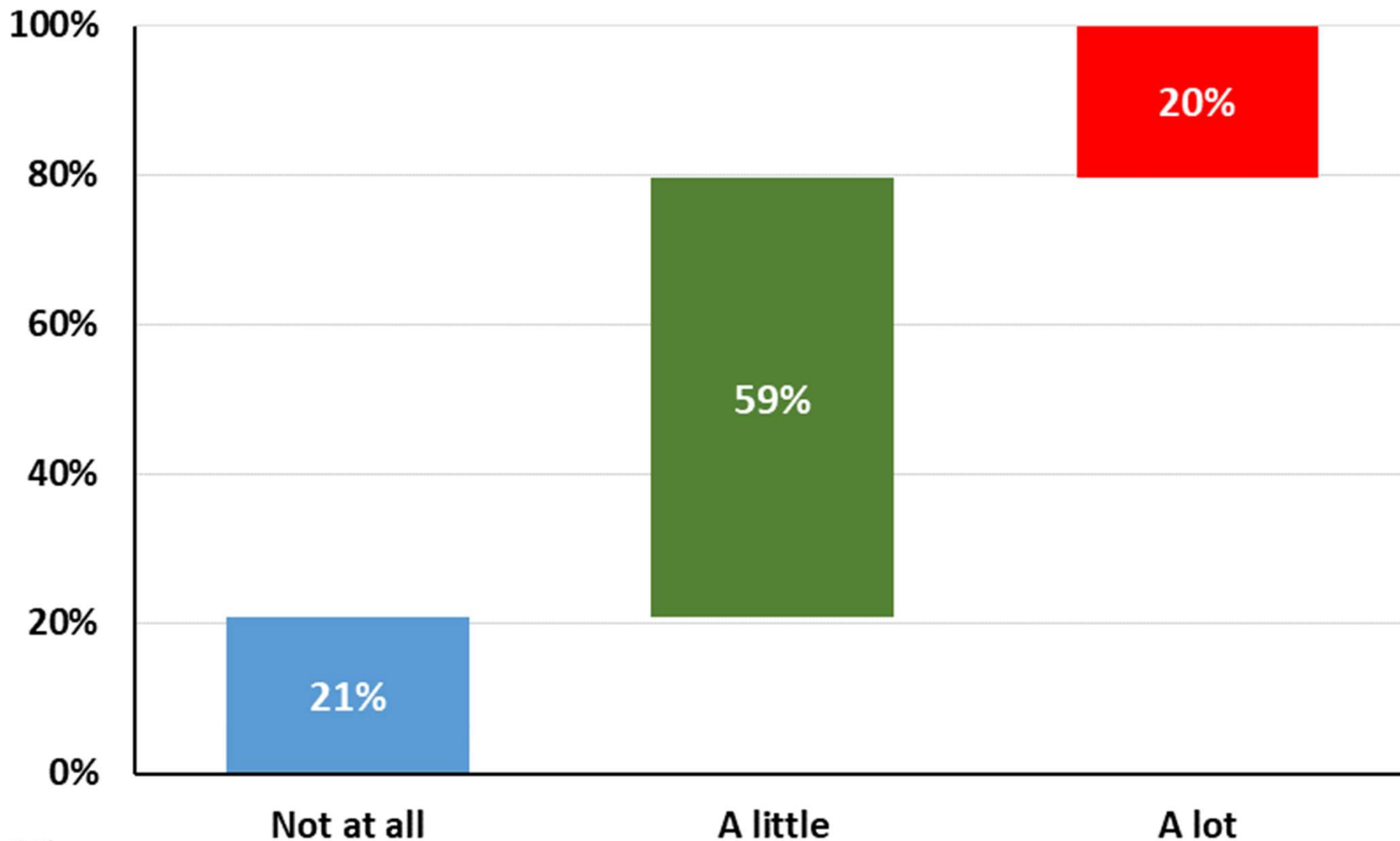
(Source: ONS Prevalence of ongoing symptoms following coronavirus (COVID-19) infection in the UK Reports)



Thanks to Bob Hawkins for the chart

Impact on People Living with Self-Reported Long Covid 12 Weeks after Infection in the UK: Feb 5 - Mar 5, 2023

(Source: ONS Prevalence of ongoing symptoms following coronavirus (COVID-19) infection in the UK Reports)



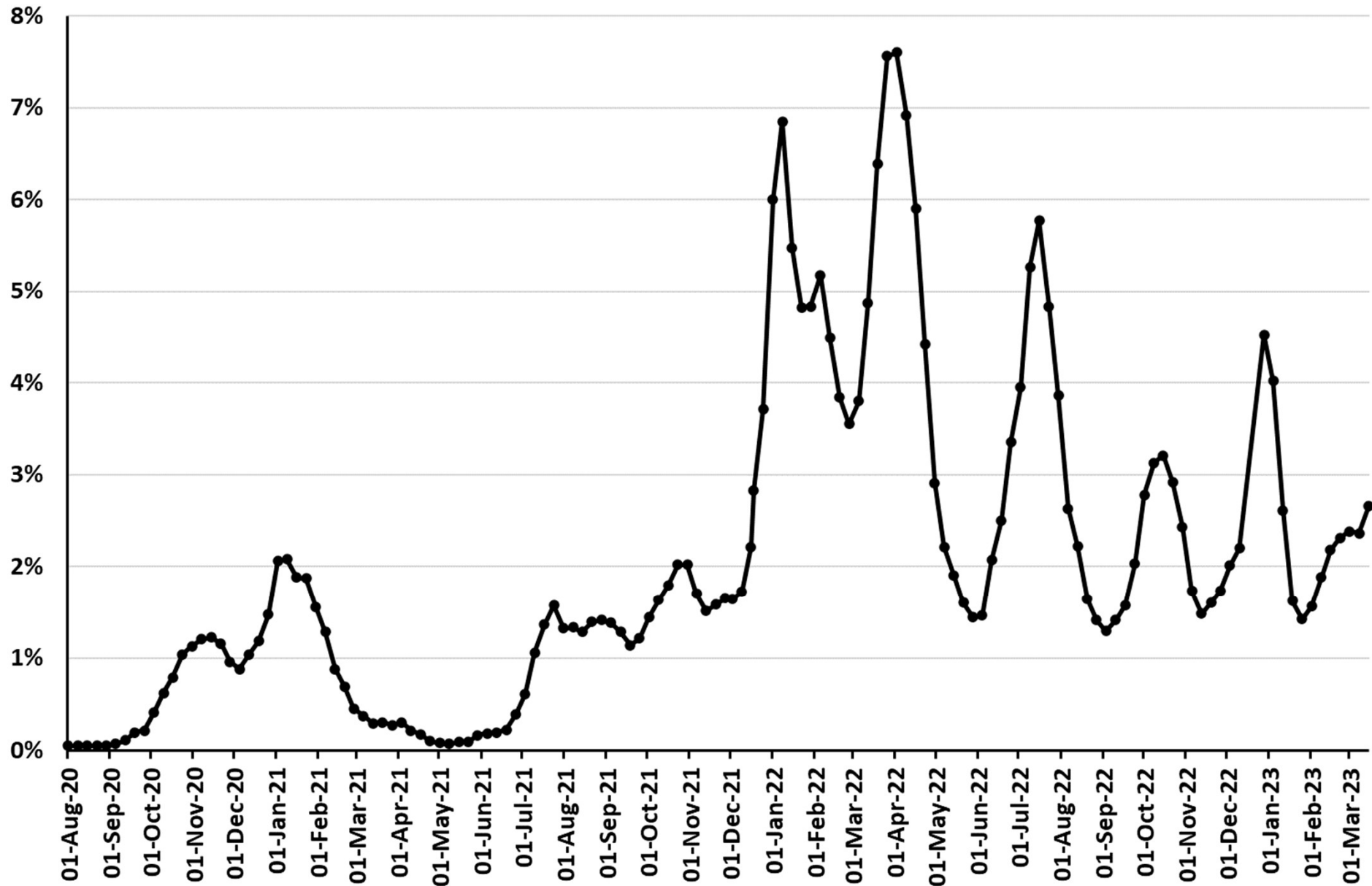
12 Wk

Extent to which Long COVID reduces ability to undertake day-to-day activities

Thanks to Bob Hawkins for the chart

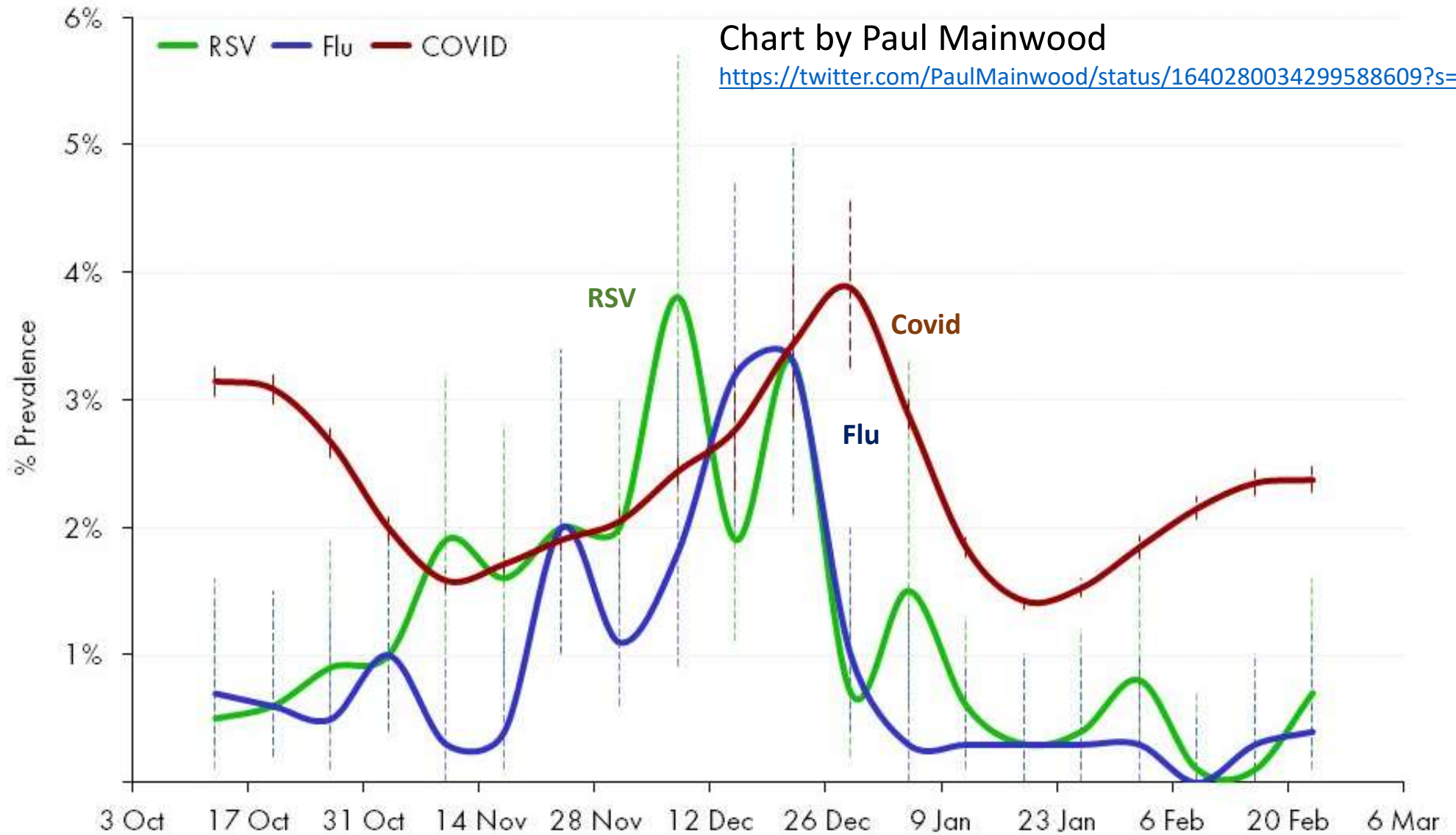
Covid is not going away

Weekly percentage of population testing positive for Covid: ONS infection survey data for England



<https://www.ons.gov.uk/peoplepopulationandcommunity/healthandsocialcare/conditionsanddiseases/datasets/coronaviruscovid19infectionsurveyheadlinersultuk>

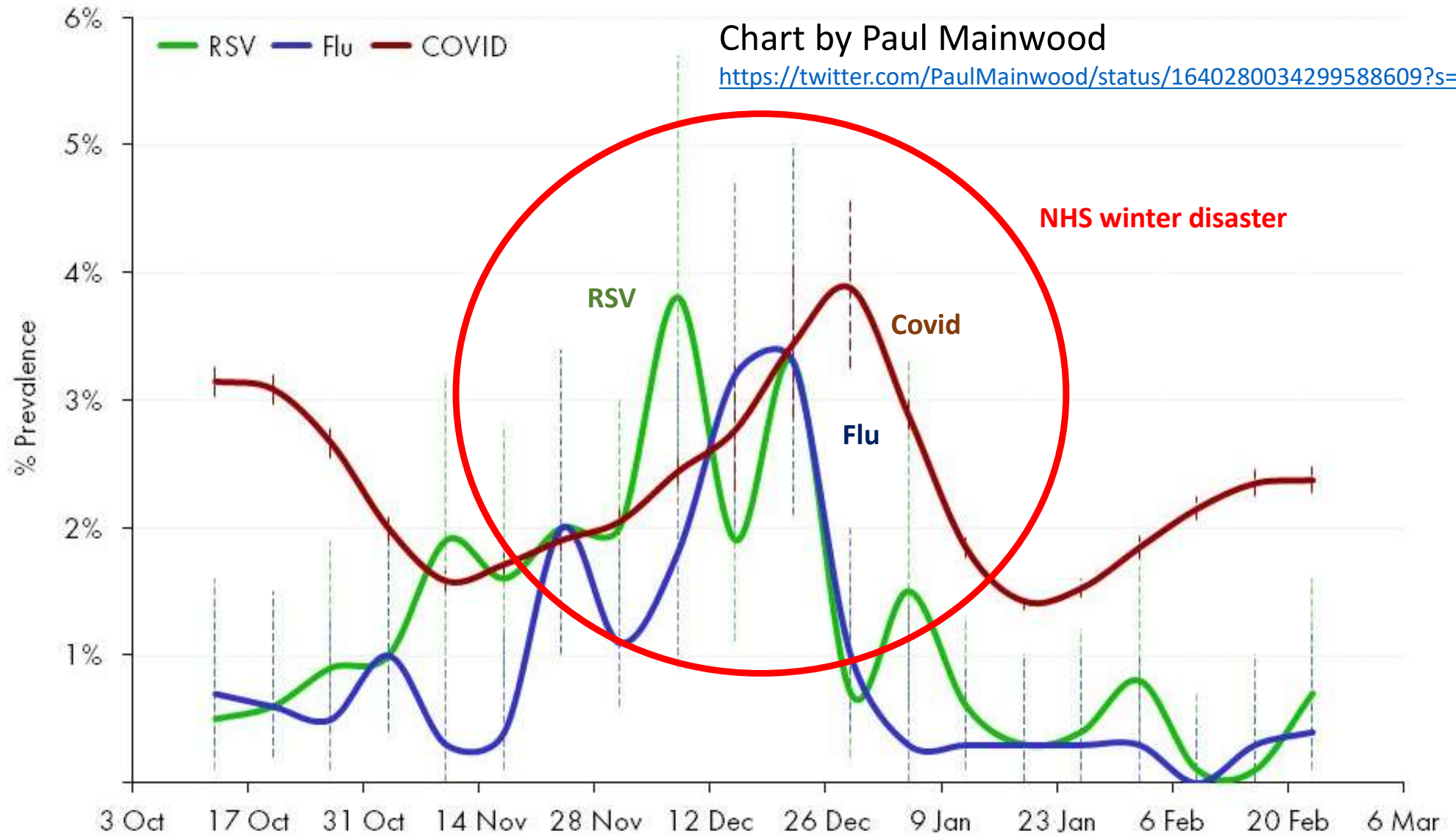
Weekly percentage of population testing positive for Covid, Flu and RSV: ONS infection survey pilot data for England (Covid) and UK (Flu/RSV) Oct – Feb



* Not strictly comparable; RSV and Flu taken as raw shares of tests returned without weighting, COVID adjusted for national characteristics; all statistics experimental
 Source: ONS infection survey

<https://www.ons.gov.uk/peoplepopulationandcommunity/healthandsocialcare/healthandlifeexpectancies/articles/influenzaandotherrespiratoryvirusespilotstudycoronaviruscovid19infectionsurveyuk/october2022tofebruary2023>

Weekly percentage of population testing positive for Covid, Flu and RSV: ONS infection survey pilot data for England (Covid) and UK (Flu/RSV) Oct – Feb

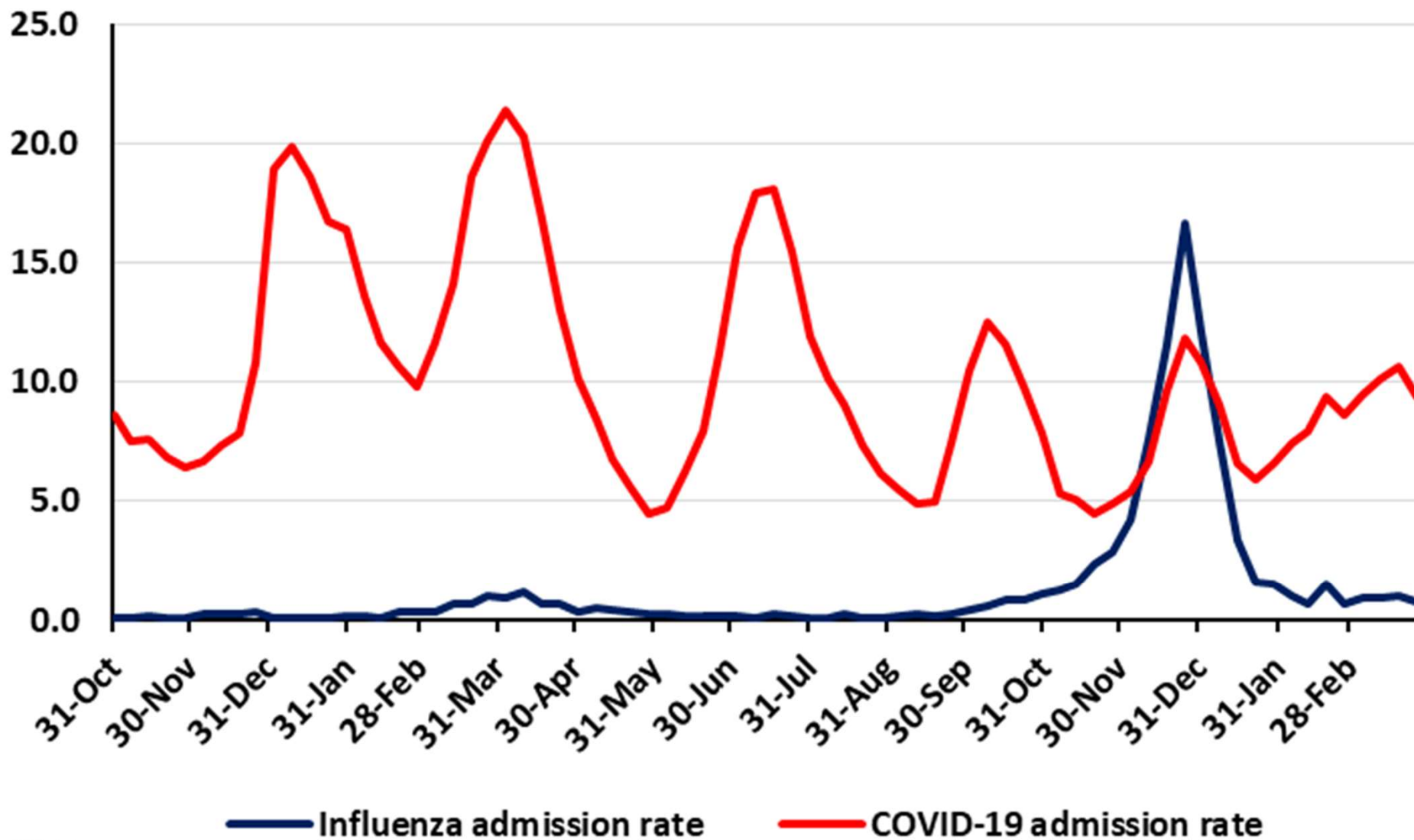


* Not strictly comparable; RSV and Flu taken as raw shares of tests returned without weighting, COVID adjusted for national characteristics; all statistics experimental
 Source: ONS infection survey

<https://www.ons.gov.uk/peoplepopulationandcommunity/healthandsocialcare/healthandlifeexpectancies/articles/influenzaandotherrespiratoryvirusespilotstudycoronaviruscovid19infectionsurveyuk/october2022tofebruary2023>

Weekly Influenza and Covid Hospital Admission Rate (per 100K) for England: Oct 31 2021 – Mar 26 2023

(Source: Weekly National Influenza and COVID-19 Surveillance Data Report)



26-Mar

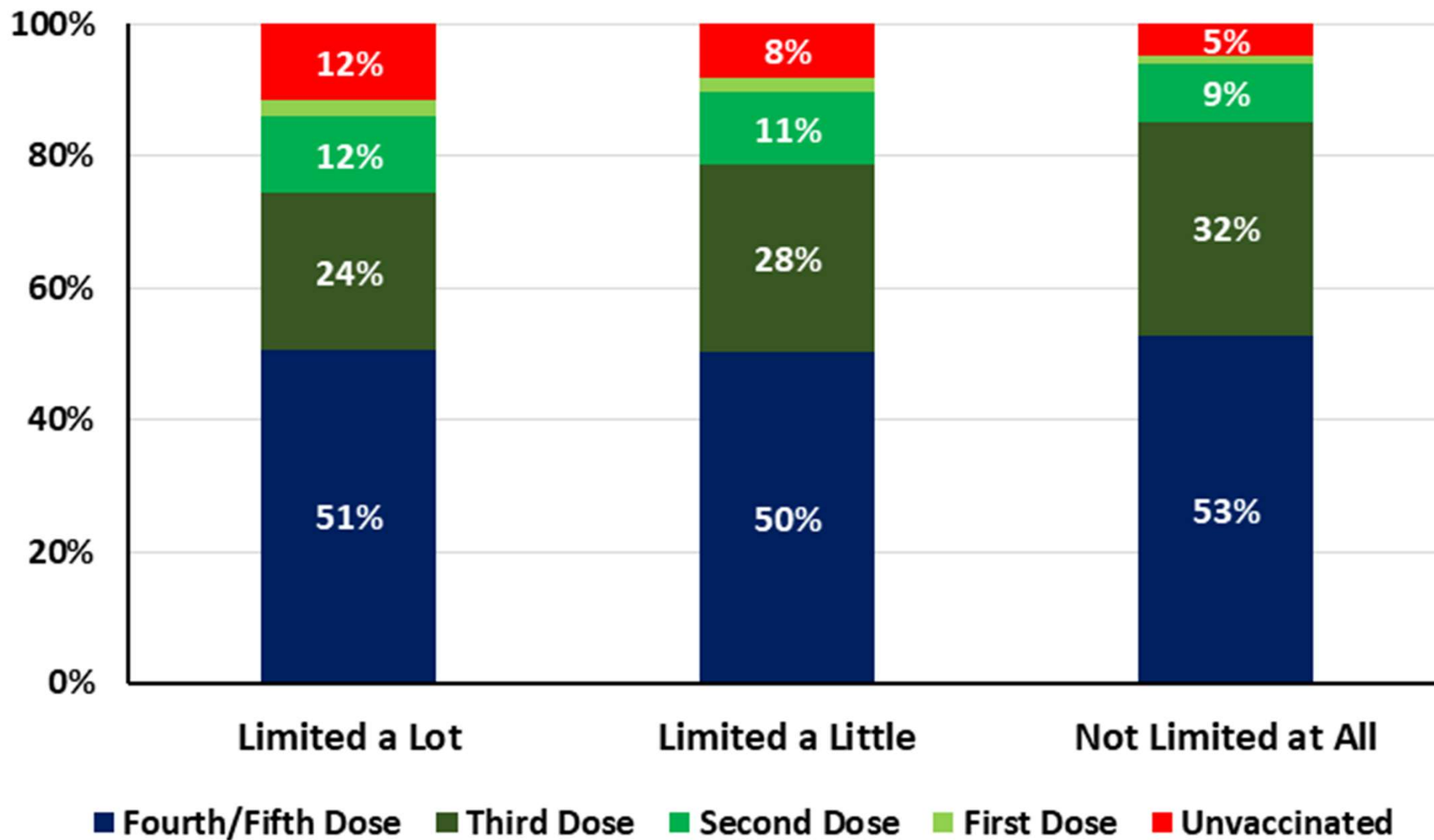
<https://www.gov.uk/government/statistics/national-flu-and-covid-19-surveillance-reports-2022-to-2023-season>

Thanks to Bob Hawkins for the chart

Clinically Extremely
Vulnerable (CEV) people

Vaccine Coverage by Disability Status for Over 18's in England as at 2 Mar 2023

(Source: ONS report on Coronavirus and vaccination rates in people by socio-demographic characteristic & occupation in England)

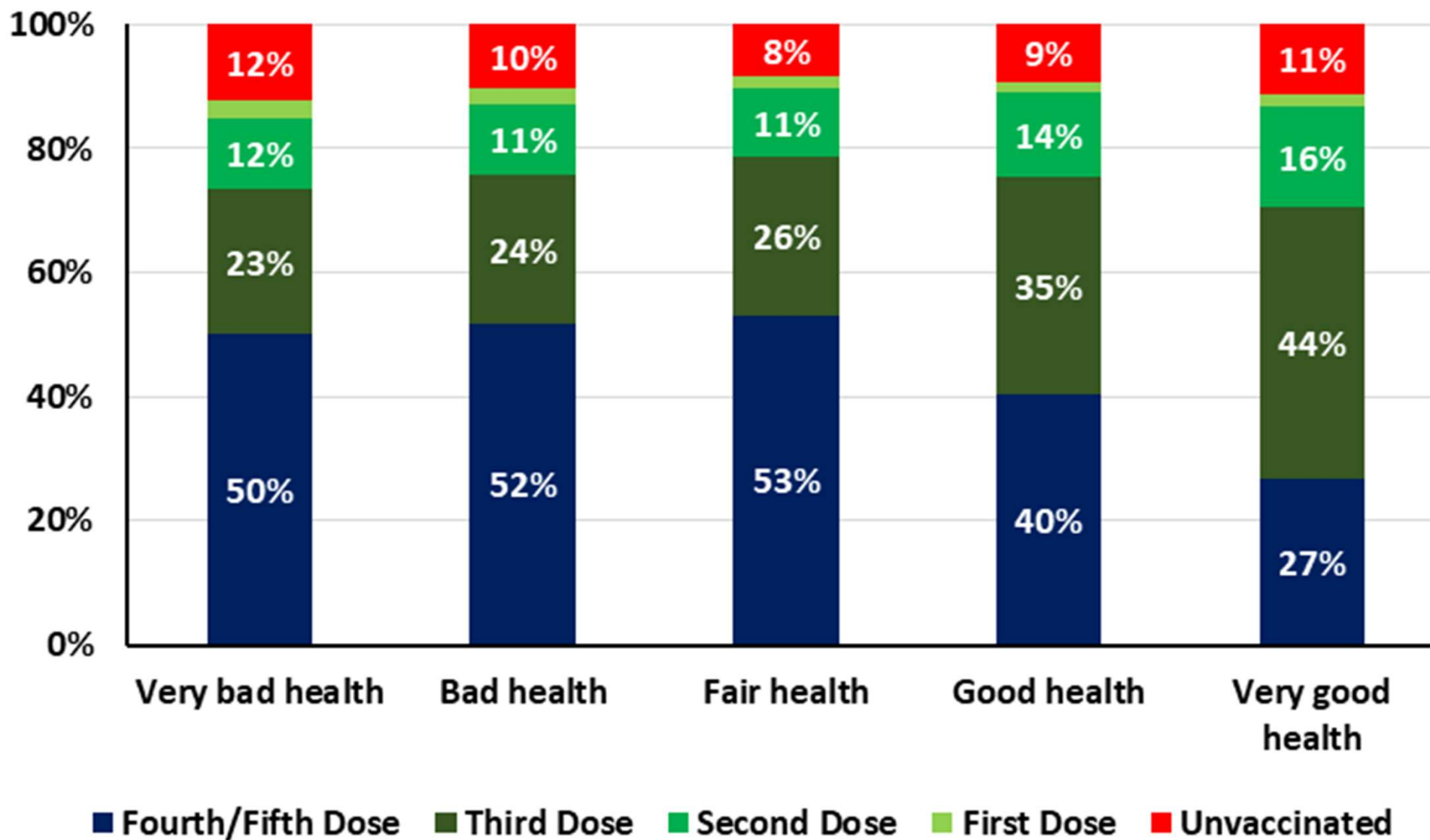


<https://www.ons.gov.uk/peoplepopulationandcommunity/healthandsocialcare/healthinequalities/bulletins/coronavirusandvaccinationratesinadultsby sociodemographiccharacteristicandoccupationengland/december2020tomarch2023>

Thanks to Bob Hawkins for the chart

Vaccine Coverage by Health Status for Over 18's in England as at 2 Mar 2023

(Source: ONS report on Coronavirus and vaccination rates in people by socio-demographic characteristic & occupation in England)

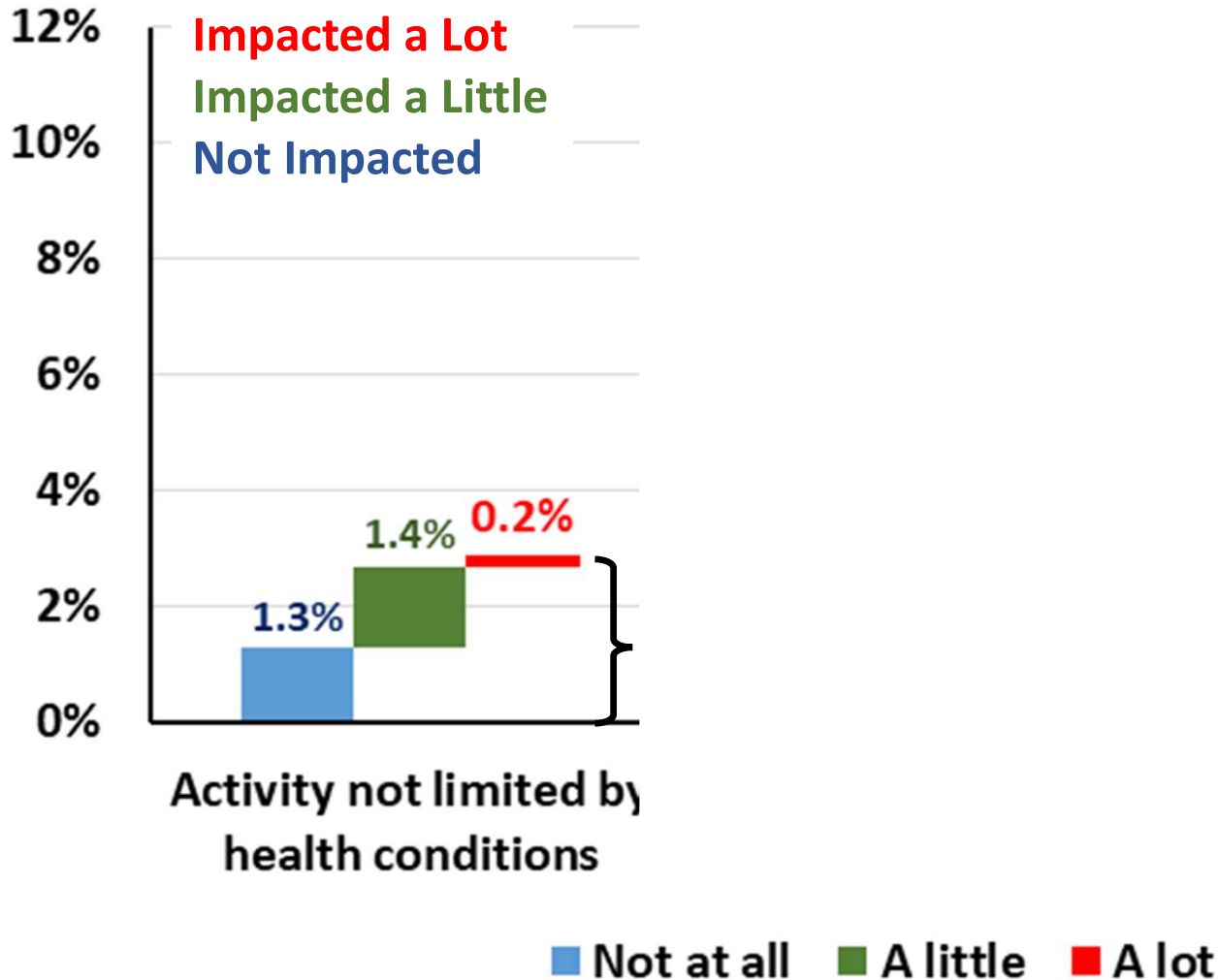


<https://www.ons.gov.uk/peoplepopulationandcommunity/healthandsocialcare/healthinequalities/bulletins/coronavirusandvaccinationratesinadultsbysociodemographiccharacteristicandoccupationengland/december2020tomarch2023>

Thanks to Bob Hawkins for the chart

Impact on People Living with Self-Reported Long Covid of Any Duration in the UK by Health Status: Feb 5 - Mar 5, 2023

(Source: ONS Prevalence of ongoing symptoms following coronavirus (COVID-19) infection in the UK Reports)



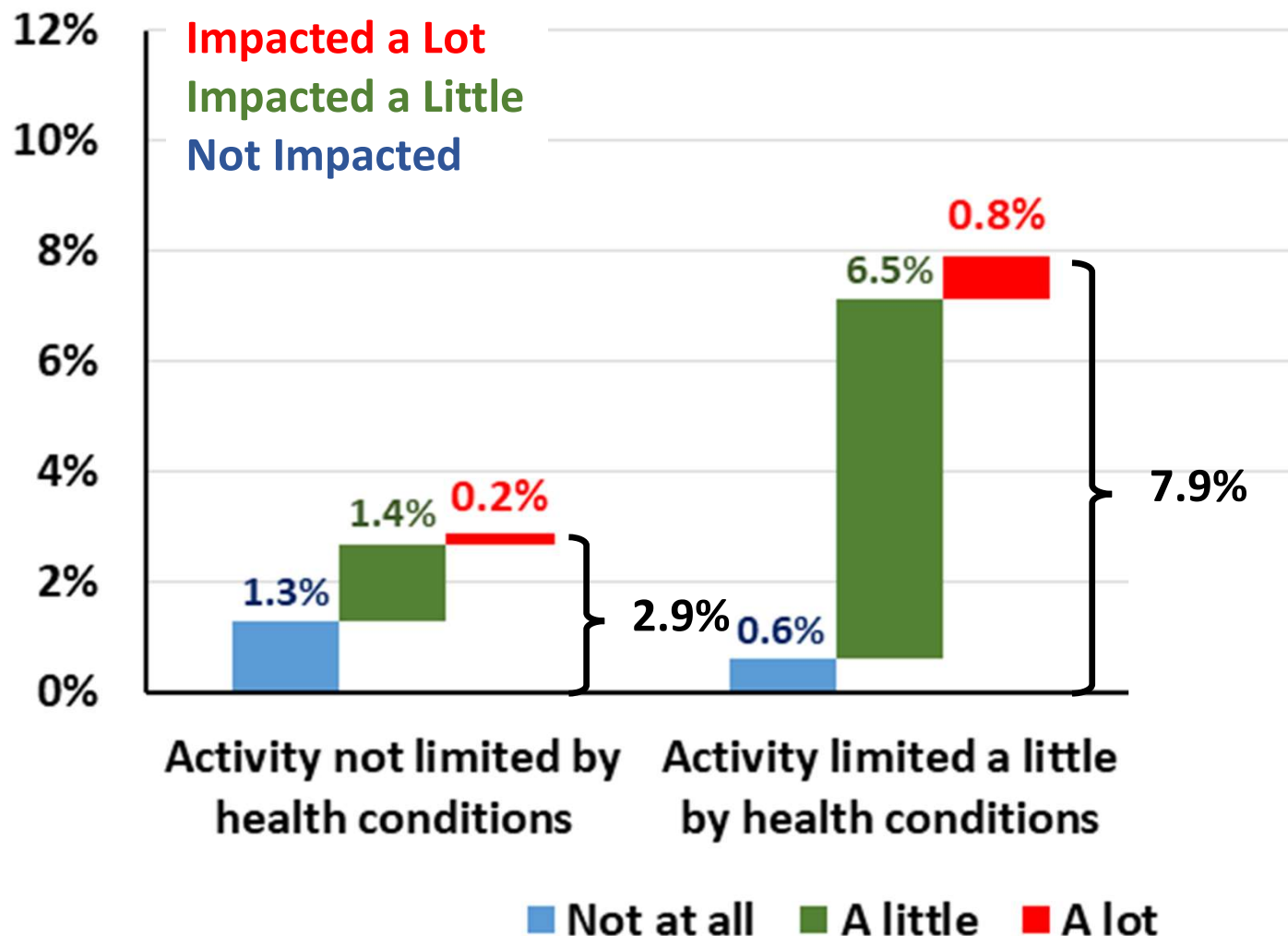
All

Extent to which Long COVID reduces ability to undertake day-to-day activities

Thanks to Bob Hawkins for the chart

Impact on People Living with Self-Reported Long Covid of Any Duration in the UK by Health Status: Feb 5 - Mar 5, 2023

(Source: ONS Prevalence of ongoing symptoms following coronavirus (COVID-19) infection in the UK Reports)



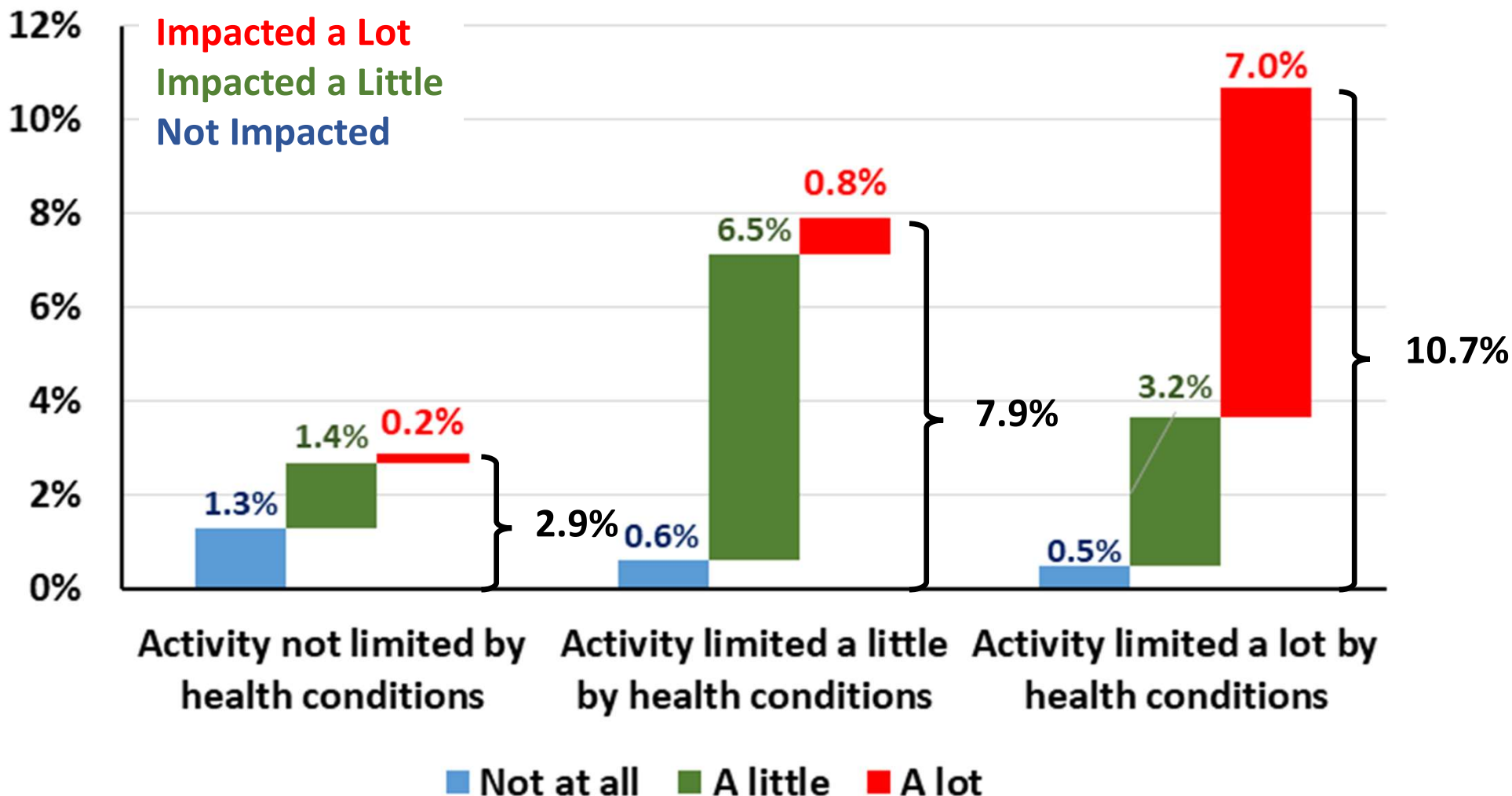
All

Extent to which Long COVID reduces ability to undertake day-to-day activities

Thanks to Bob Hawkins for the chart

Impact on People Living with Self-Reported Long Covid of Any Duration in the UK by Health Status: Feb 5 - Mar 5, 2023

(Source: ONS Prevalence of ongoing symptoms following coronavirus (COVID-19) infection in the UK Reports)



All

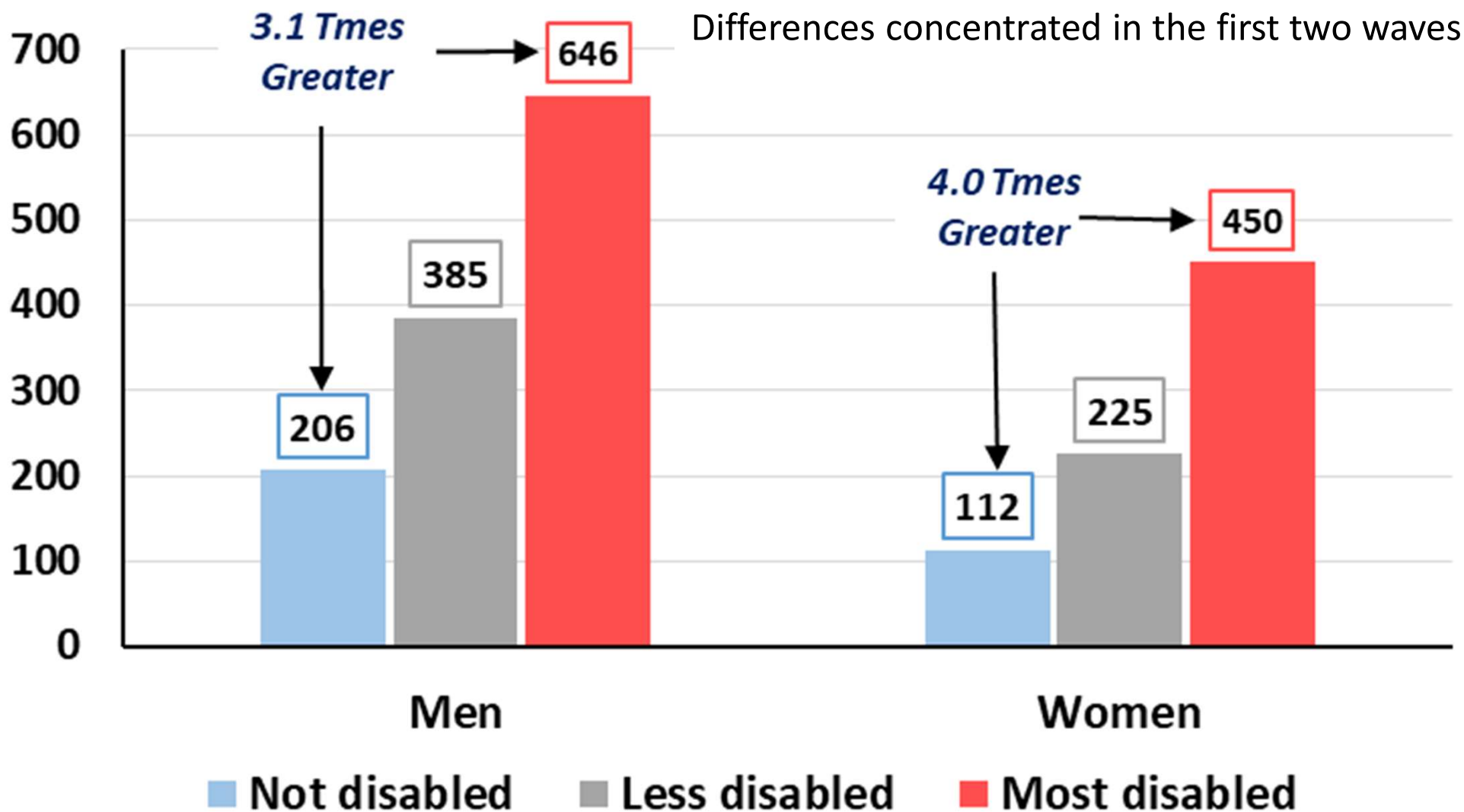
Extent to which Long COVID reduces ability to undertake day-to-day activities

Thanks to Bob Hawkins for the chart

Covid Deaths by Disability Status by Gender for England Jan 2020 – Mar 2022

(Source: ONS estimates of coronavirus (COVID-19) related deaths by disability status Report May 2022)

Annualised Age Adjusted Covid Deaths per 100K



Covid Deaths All Waves

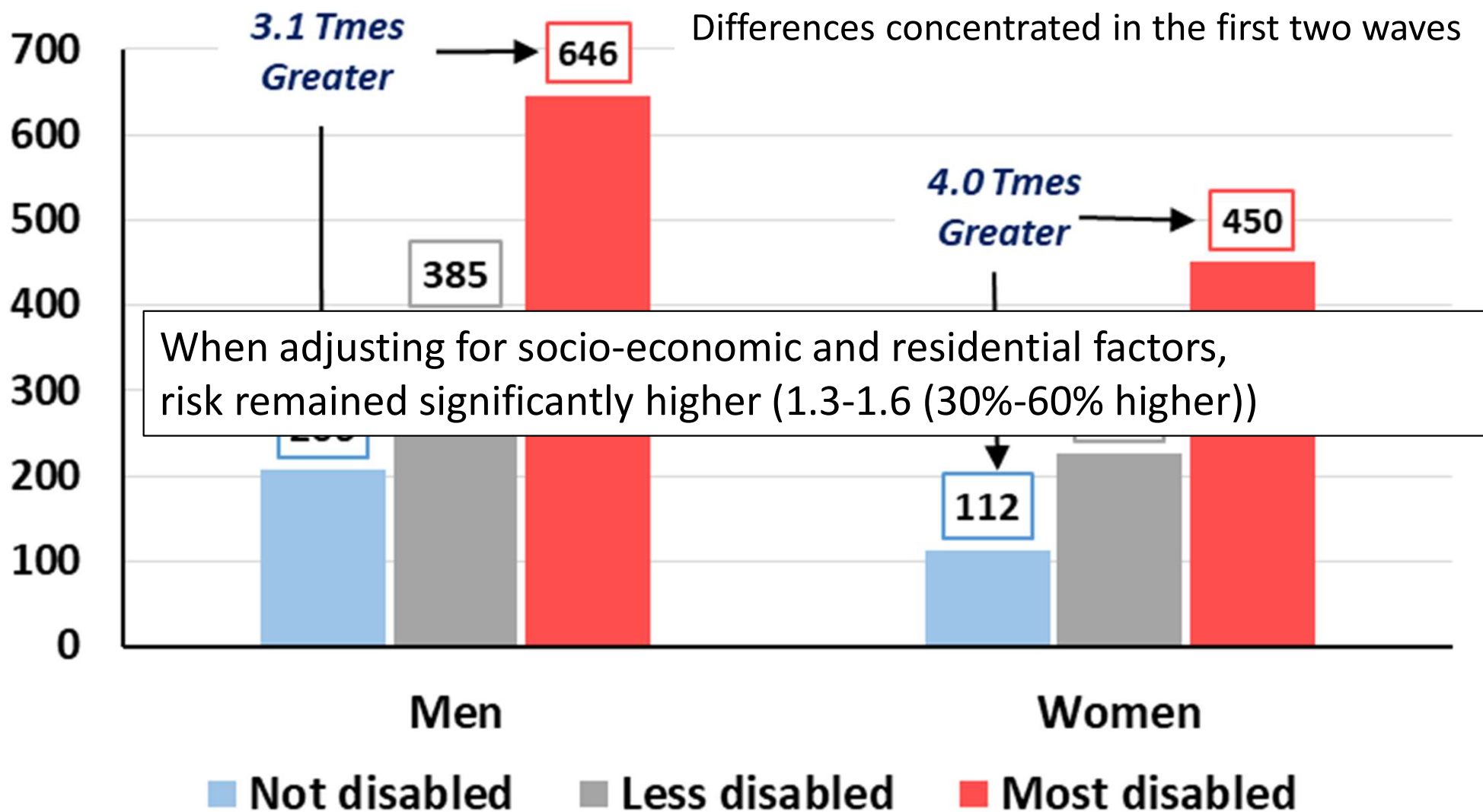
<https://www.ons.gov.uk/peoplepopulationandcommunity/birthsdeathsandmarriages/deaths/articles/coronaviruscovid19relateddeathsbydisabilitystatusenglandandwales/24january2020to9march2022>

Thanks to Bob Hawkins for the chart

Covid Deaths by Disability Status by Gender for England Jan 2020 – Mar 2022

(Source: ONS estimates of coronavirus (COVID-19) related deaths by disability status Report May 2022)

Annualised Age Adjusted Covid Deaths per 100K



Covid Deaths All Waves

<https://www.ons.gov.uk/peoplepopulationandcommunity/birthsdeathsandmarriages/deaths/articles/coronaviruscovid19relateddeathsbydisabilitystatusenglandandwales/24january2020to9march2022>

Thanks to Bob Hawkins for the chart

SUMMARY

- From hospital data looks as if current cases are coming down.
- Almost everyone now at least 6 months out from a vaccine dose. Many over a year. Spring boosters will start soon for 75s+ and other at risk groups.
- Long Covid numbers are falling very slowly, but still very high numbers with 80% of people reporting Long Covid also reporting some impact on their daily life
- Clinically extremely vulnerable people have been hardest hit by the pandemic and are least protected now.